



LUBBOCK CHRISTIAN UNIVERSITY

2023-24 WOMEN'S BASKETBALL GAME NOTES

MEMBERS OF THE LONE STAR CONFERENCE - SEVEN NCAA REGION TOURNAMENT APPEARANCES - 2015-16, 18-19 & 20-21 NCAA DIV. II CHAMPIONS

WOMEN'S BASKETBALL GAME NOTES January 11, 2024

LCU LADY CHAPARRALS

Location Lubbock, Texas
Founded 1957
Enrollment 2,000
Affiliation NCAA Div. II
Conference Lone Star
Nickname Lady Chaparrals "Lady Chaps"
Athletic Director Andrew Sorrells
Sports Information Chris Due
Head Coach Steve Gomez
Career Record (year) 510-146 / 21st

2023-24 LADY CHAPS SCHEDULE

Date	Opponent	Result
Nov. 3	vs. No.17 Union (Tenn.) \$	L 78-87
Nov. 5	vs. Adams State \$	W 69-65
Nov. 10	at Colorado Christian ^	W 67-62(ot)
Nov. 11	vs. Colorado State Pueblo ^	W 71-60
Nov. 17	vs. Southwestern Okla. St.	W 61-54
Nov. 18	vs. King (Tenn.)	W 82-42
Nov. 25	at No.12 Southern Nazarene	L 64-67
Nov. 30	at Oklahoma Christian	W 69-65
Dec. 2	at Arkansas Fort Smith	W 58-49
Dec. 10	vs. Texas A&M International	L 60-65
Dec. 12	vs. Texas A&M Kingsville	W 42-28
Dec. 30	vs. SW'ern Assemblies of God (Exib.)	W 72-63
Jan. 4	at Cameron	W 63-48
Jan. 6	at Midwestern State	W 68-61(ot)
Jan. 11	vs. Texas Permian Basin	5:30 PM
Jan. 13	vs. Angelo State	1:00 PM
Jan. 18	at Eastern New Mexico	6:30 PM
Jan. 20	at Western New Mexico	2:00 PM
Jan. 25	vs. UT Tyler	5:30 PM
Jan. 27	vs. Texas Womans	1:00 PM
Feb. 1	vs. Midwestern State	5:30 PM
Feb. 3	vs. Cameron	1:00 PM
Feb. 8	at Angelo State	5:30 PM
Feb. 10	at Texas Permian Basin	1:00 PM
Feb. 15	vs. Western New Mexico	5:30 PM
Feb. 17	vs. Eastern New Mexico	1:00 PM
Feb. 22	at St. Edward's	5:30 PM
Feb. 24	at St. Mary's	1:00 PM
Feb. 29	vs. West Texas A&M	5:30 PM
Mar. 2	at West Texas A&M	1:00 PM

* - Lone Star Conference Game Times are Central

\$ - D2CCA Tip-Off Classic (Lubbock, Texas)
 ^ - RMAC/LSC Tip-Off Classic (Lakewood, Colo.)
 + - Lone Star Conference Championships (Frisco, Texas)



FACEBOOK/LCUCAPS
 TWITTER: @LCUCAPS
 INSTAGRAM: @LCUCAPS
 YOUTUBE: #LCUathletics



vs TEXAS PERMIAN BASIN

Thur. Jan. 11 - 5:30 PM

LONE STAR CONFERENCE / WEST DIV. GAME >> RIP GRIFFIN CENTER (LUBBOCK, TEXAS)

LIVE SCORING: <http://statb.us/b/491381>

RADIO: CHAP RADIO

WATCH ONLINE: <https://www.lcuchaps.com/live> LISTEN ONLINE: <https://streamdb4web.securenetsystems.net/v5/LCUEU>

UTPB RECORD: 10-2, 5-1 (LSC)

ALL-TIME SERIES: LCU LEADS 28-0

UTPB: HOME 6-0, ROAD 1-2, NEUTRAL 3-0

LAST MEETING: 2/4/23 vs UTPB (W 70-50)

RANKINGS: N/A

LAST WIN BY LCU: 2/4/23

LAST WIN BY UTPB: N/A



GAME
14

vs ANGELO STATE

Sat. Jan. 18 - 1 PM

LONE STAR CONFERENCE / WEST DIV. GAME >> RIP GRIFFIN CENTER (LUBBOCK, TEXAS)

LIVE SCORING: <http://statb.us/b/491382>

RADIO: CHAP RADIO

WATCH ONLINE: <https://www.lcuchaps.com/live> LISTEN ONLINE: <https://streamdb4web.securenetsystems.net/v5/LCUEU>

ASU RECORD: 11-4, 5-1 (LSC)

ALL-TIME SERIES: LCU LEADS 16-6

ASU: HOME 4-2, ROAD 3-0, NEUTRAL 4-2

LAST MEETING: 2/2/23 vs ASU (L 60-57)

RANKINGS: N/A

LAST WIN BY LCU: 3/4/22

LAST WIN BY ASU: 2/2/23



GAME
15

GO WEST

West Division play in the Lone Star Conference heads to the Rip Griffin Center this week, as Lubbock Christian University hosts UT Permian Basin Thursday (5:30 p.m.) and Angelo State Saturday (1 p.m.) for their first divisional home games of the season. LCU opened West Division play on the road last week and went 2-0 with wins over Cameron and Midwestern state, which improved their conference record to 5-1 and overall record to 10-3. LCU has won their last three games and five of their last six.

EXTRA EXTRA

Saturday, LCU concluded their first West Division road trip with a 2-0 mark following a 68-61 overtime win Saturday at Midwestern State. Grace Foster (21 points) and Audrey Robertson (18 points) combined for 39 points in the win, which put LCU at 2-0 this season in overtime results. LCU led for 37:31 of the game and outscored MSU 9-2 in overtime (LCU has outscored opponents 19-7 in overtime this season).

GRACE AGAIN

The Lone Star Conference announced their women's basketball weekly honors and Lubbock Christian University's Grace Foster was recognized as the Offensive Player of the Week. Foster led LCU (on the week) in both points per game (19.5) and rebounds per game (9.0), as she was a rebound shy of a double-double in each of the contests (wins at Cameron and MSU). She opened with 18 points, nine rebounds and a trio of assists at Cameron, before leading LCU to an overtime win at Midwestern State with 21 points, nine rebounds and six assists. She was 3-of-6 from three-point range at MSU, as she notched her 20th career performance of at least 20 points scored in a game. Her totals on the week included 18 rebounds (all defensive) and nine assists. Foster was a +28 for the week (+14 average per game). Foster's weekly honor is the second of the season and sixth of her career (fifth offensive honor). She claims the Lady Chaps third weekly accolade this season and her second honor of the season (claimed her first on Dec. 18). Maci



LUBBOCK CHRISTIAN (@LCUCAPS) LADY CHAPARRALS

Record: 10-3, 5-1 Lone Star
 Last Game: 68-61 W(ot) at Midwestern St.
 Coach: Steve Gomez
 Gomez vs. UTPB: 22-0
 Gomez vs. ASU: 11-3

PROJECTED STARTERS

Pos.	Player	Class	Pts/p	Reb/p
G	Audrey Robertson	Sr.	11.8	4.2
G	Shaylee Stovall	Sr.	6.0	1.3
G	Maci Maddox	Sr.	12.8	4.0
F	Grace Foster	Jr.	18.0	6.7
F	Martie McCoy	So.	2.5	3.6

LCU LEADERS

AVG. POINTS
18.0 Grace Foster

REBOUNDS

6.7 (87) Grace Foster

ASSISTS

3.8 (49) Maci Maddox

STEALS

2.0 (26) Maci Maddox



UT PERMIAN BASIN (@UTPBfalcons) FALCONS

Record: 10-2, 5-1 Lone Star
 Last Game: 72-55 L vs. Western N.M.
 Coach: Rae Boothe
 Career Record: 218-180
 UTPB Record: 59-111

PROJECTED STARTERS

Pos.	Player	Class	Pts/p	Reb/p
G	Kamryn Lemon	Gr.	13.5	4.4
G	Andreea Mancha	Sr.	13.1	3.2
G	Avalon Munoz	Jr.	9.1	3.3
F	Makala Bingley	So.	6.6	1.7
P	Alexus Qaadman	Gr.	12.3	11.3

UTPB LEADERS

AVG. POINTS
13.5 Kamryn Lemon

REBOUNDS

11.3 (135) Alexis Qaadman

ASSISTS

3.5 (38) Kamryn Lemon

STEALS

2.6 (31) Avalon Munoz



ANGELO STATE (@ANGELOATHLETICS) BELLES

Record: 11-4, 5-1 Lone Star
 Last Game: 66-55 W vs. Eastern N.M.
 Coach: Alesha Ellis
 Career Record: 241-76
 ASU Record: 52-23

PROJECTED STARTERS

Pos.	Player	Class	Pts/p	Reb/p
G	Sawyer Lloyd	Sr.	15.3	6.4
G	Madisen Honea	Jr.	3.2	1.3
G	Landry Morrow	So.	5.9	3.4
F	Tayanna McGhee-Pleasant	Sr.	16.9	8.8
F	Madeline Stephens	Jr.	12.2	6.8

ASU LEADERS

AVG. POINTS
16.9 T. McGhee-Pleasant

REBOUNDS

8.8 (132) T. McGhee-Pleasant

ASSISTS

5.4 (81) Sawyer Lloyd

STEALS

2.5 (38) Sawyer Lloyd

LUBBOCK CHRISTIAN UNIVERSITY WOMEN'S BASKETBALL GAME NOTES

Maddox claimed a defensive honor Nov. 14.

SEASON NOTES AND TRENDS

> LCU opened the season with at least 20 points from the free-throw line in their first four games this season, marking their first four-game span of 20-or-more free-throws since Feb. 18 – Mar.23, 2017. The Lady Chaps are taking advantage from the free-throw line, making 79.3% of their attempts (191/241, which is ninth nationally) and averaging 14.7 points a game from the line (45th nationally). Grace Foster has gone 13-of-13 from the free-throw line twice this season and had an active streak of 29 consecutive made free-throws earlier this season. Each of the 13-made free-throw performances involve the most free-throws made in a game (13) since Nicole Hampton had 15 on Jan. 14, 2016 (third-most since 2008). Foster had 13 on Nov. 5 against Adams State at home, which set a Rip Griffin Center record. Foster's 13-of-13 marks are each one off Hampton's 14-of-14 school-record performance on Jan. 14, 2016 (at Newman). Her 13-of-13 on Nov.5 did mark a new Rip Griffin Center record previously held by Laynee Burr, who was 12-of-12 on Feb. 4, 2022 (against Midwestern State). The performance at the line for Foster on Nov. 12 against CSU Pueblo marked her sixth game in which she was perfect from the line with six-or-more consecutive shots made. Foster is 68-of-74 on the season (.919, second in the LSC and seventh nationally), which leads the squad (of qualifiers). Shaylee Stovall, who is 22-of-23 (95.7%), is 10.5-made free-throws away from qualifying as the team's leader (NCAA minimum to qualify is 2.5 made free-throws per game). Stovall enters Thursday with an active streak of 21 consecutive made free-throws.

> The Lady Chaps have two players in the top-15 in LSC scoring so far this season. Foster is averaging 18.0 points per game, which ranks second in the LSC. Maci Maddox is ranking 15th in the LSC with 12.8 points per game. The pair are also in top-five in minutes played, with Maddox leading the conference (fourth in the nation) with 37.7 minutes played per game (Foster is fourth in LSC at 33.2). Maddox is fifth in the LSC with an assist/turnover ratio of 1.4 (she led all LSC players on the week last week).

> Foster is averaging 6.7 rebounds per game (13th in the LSC), but is fourth in the LSC averaging 6.4 defensive rebounds per game. She led the LSC last season with a pace of 7.5 defensive rebounds per game.

> Maci Maddox leads LCU in steals with 26 on the season (12th in LSC) and ranks 13th in the LSC with a pace of 2.0 steals per game. She opened the season with at least one steal in the first seven games (has had at least one steal in 11 of 13 games this season) and had steals in 10 consecutive games (dating back to last season). Maddox opened last season with at least one steal in the first 11 games.

> LCU has shot at least 50% from the field in three of their 13 games this season. As a team, LCU is second in the LSC and 27th nationally with a 44.7% shooting percentage from the field. LCU leads the LSC and is ninth nationally in three-point shooting, as they are 67-of-180 (37.2%) from long range. The Lady Chaps have nine three-pointers in each of their last two games, which each matching a season-high total.

MILESTONE

Grace Foster scored 27 points Sunday, December 10, 2023 to surpass 1,000 career points. She is the first Lady Chaps member to reach 1,000 career points since Ashton Duncan completed the task Feb. 17, 2022 against Eastern New Mexico. She recorded nine rebounds Thursday at Cameron to surpass 500 career rebounds.

23-24 LADY CHAPS IN THE RANKINGS

	D2CSC	WBCA
Preseason	RV	RV
Poll 1	22	(no poll)
Poll 2	18	RV
Poll 3	RV	RV
Poll 4	20	RV
Poll 5	-	-
Poll 6	-	-
Poll 7	RV	-
Poll 8	-	-
Poll 9	-	-
Poll 10	-	-
Poll 11	-	-
Poll 12	-	-
Poll 13	-	-
Poll 14	-	-
Poll 15	-	-
Poll 16	-	-
Poll 17	-	-

CONFERENCE CONVERSATION

For a fourth time (fifth season in LSC), LCU jumped out to a 2-0 start in LSC play and they head into the week-end 5-1 in LSC action. They are coming off a conference win (68-61win at Midwestern State Saturday in overtime), which put them 4-0 this season in LSC road games. They come home, where they are 1-1 in LSC play. Grace Foster leads LCU in LSC play with an average of 19.3 points a game (second in the LSC). She is joined in a double-figure scoring pace by Audrey Robertson (13.5 points) and Maci Maddox (10.7 points). Foster, who leads LCU with a pace of 7.0 rebounds per game, is 26-of-28 (92.9%) from the free-throw line and spearheads a squad that is shooting 72.4% (71/98) from the line in conference action.

NATIONALLY KNOWN (OR UNKNOWN)

Despite returning five starters from a regional-finalist squad, which also shared a divisional title, LCU did not garner the attention of voters in the preseason. This season, LCU received Top-25 votes in the WBCA Preseason Poll, but it is their first time they did not make the Top-25 for a WBCA preseason poll since the start of the 2017-18 season (second time not in a WBCA Preseason Poll since becoming eligible for the poll in 2015-16... WBCA did not conduct a preseason poll in 2020-21 due to COVID). Also, since joining NCAA Division II (2015-16 was their first postseason eligible season), the Lady Chaps have appeared in every D2CSC Preseason Poll until this season, as they also received votes in the D2CSC Top-25 Preseason Poll. LCU was ranked as high as No.18 in the D2CSC rankings (earlier this season), but currently they are receiving votes.

SO ARE SOME OTHERS

LCU fell to No.12 Southern Nazarene (Nov. 25), placing them with a 0-2 record this season against nationally ranked programs (lost to No.17 Union in their season opener). LCU went 6-0 against nationally ranked programs in 2020-21, 3-2 in 2021-22 (opened 3-0) and 2-5 last season against Top-25 competition. Of LCU's three losses this season, two of the opponents have been nationally ranked and the other opponent was receiving votes.

OUR HOME

LCU is 4-2 at home this season. Grace Foster is leading LCU with 18.5 points per game on the home floor (also averaging 7.0 rebounds). The Lady Chaps, shooting 45.2% from the field inside "The Rip," are also receiving averages of 11.5 points a game from Maci Maddox. LCU is 88-of-113 from the free-throw line (77.9%) at home this season, with Shaylee Stovall 13-of-14 from the charity stripe.

SWEET HOME (ON) CHICAGO

The Lady Chaps, who went 12-2 at home last season, are 4-2 this season at home. On Feb. 2, 2023, the NCAA Division II record home win streak came to a close, as LCU fell to Angelo State, which ended the record win streak at 113. The loss was LCU's first at home since Jan. 1, 2015 against Oklahoma City University. LCU, who also had a 7-0 mark in NCAA postseason play in Lubbock in the mix (not including a 4-0 mark in LSC postseason play), had also won 88 consecutive home conference games (their last conference home loss occurred Jan. 10, 2013 against Oklahoma City). They completed a 49-0 all-time mark in Heartland Conference home games. LCU also went 11-0 during their 113-game home win streak against nationally ranked programs.

NCAA DIVISION II'S LONGEST HOME WIN STREAKS

113 - Lubbock Christian Jan. 1, 2015 - Feb. 2, 2023
87 - Neb. Kearney Jan. 31, 1995-Nov. 24, 2001
85 - West Tex. A&M Jan. 9, 1987-Dec. 6, 1991

EYE-OPENING

The 2023-24 season marks LCU's 11th since leaving the NAIA and LCU has a 276-50 record (84.7%) in that span. In NCAA postseason play, the Lady Chaps are 24-3 all-time (88.9%).

FIVE THINGS ABOUT UTPB

1 > The Falcons produced a 13-15 record last season, which included a 10-12 conference record and a seventh-place finish in the West Division (4-10 divisional record).
2 > UTPB has turned things around this season, as they are 10-2 overall and they have a 5-1 mark in LSC play. The Falcons have won their last six games and head to Lubbock with a 1-2 road record.
3 > UT Permian Basin is picked to 10th in the LSC this season, as they took the No.10 spot (of 16) in the conference's Preseason Coaches' Poll. They are fourth among West Division squads.
4 > Ranking 21st nationally, UTPB gets to the line for free-throws, averaging 22.1 attempts per game. They make 15.3 per game (31st nationally). Alexis Quaadman leads the team averaging 3.8 points per game from the line.

LADY CHAPS HISTORY

NCAA NATIONAL CHAMPIONSHIPS
2016 2019 2021

NCAA TOURNAMENT APPEARANCES
2016 2018 2019 2020 2021 2022 2023

NCAA DIV. II SOUTH CENTRAL REGION
TOURNAMENT CHAMPIONS
2016 2018 2019 2021

LONE STAR CONFERENCE
CHAMPIONS
2020,2021 (Won Tournament) 2021 (Regular Season)

LONE STAR CONFERENCE
DIVISION CHAMPIONS
2021 (West), 2023 (West)

HEARTLAND CONFERENCE
2013/2014 First Place
2014/2015 Regular Season Champions
2015/2016 Regular Season Champions
2017/2018 Regular Season Champions
2018/2019 Regular Season Champions

HEARTLAND CONFERENCE
TOURNAMENT CHAMPIONS
2016 2018 2019

SAC CONFERENCE CHAMPIONS
2006/2007
2011/2012

SAC TOURNAMENT CHAMPIONS
2013

NAIA NATIONAL QUALIFIERS
2004 2009
2005 2010
2006 2011
2007 2012
2008 2013

NAIA SWEET SIXTEEN FINISH
2007
2009

NAIA ELITE EIGHT FINISH
2008
2011
2013

NAIA FAB FOUR SEMIFINALISTS
2012

NAIA NATIONAL FINALIST
2006

5 > Quaadman is the top rebounder in the LSC, as she averages 11.2 per game (ninth nationally). She ranks seventh nationally with an average of 4.4 of-fensive rebounds per game. Quaadman ranks 12th nationally with six double-double performances on the season.

THE SERIES AGAINST UTPB

LCU is 28-0 all-time against the Falcons. They are 16-0 against UTPB in Lubbock and 12-0 all-time against the Falcons all-time as conference opponents (1-0 against the Falcons in conference postseason play). Only two of the last six meetings have been at home, including their prior meeting (resulted in a 70-50 LCU win on Feb. 4, 2023). The two programs have been conference foes in both the Heartland and Lone Star Conference.

ACTIVE LADY CHAP LEADERS VS. UTPB

Top-three LCU active career leaders against UTPB:

Grace Foster 3gp, 12.0 points p/g, 5.3 reb. p/g
Audrey Robertson 5gp, 9.8 points p/g, 18/33 fg
Taylor Thomas 2gp, 7.5 points p/g, 2.0 assists p/g

PREVIOUS RECAP VS. UTPB

Feb. 4, 2023 (Lubbock, Texas) – LCU: 70 – UTPB: 50
LCU outscored UT Permian Basin 41-14 in the first half off 63.6% shooting from the field in the span to cruise past the Falcons 70-50 in a Lone Star Conference West Division meeting inside Rip Griffin Center.

It was the third game this season LCU never trailed, but the opening six minutes did not show signs that LCU was going to be able to put the game into cruise control. After Maci Maddox hit a three-pointer for the Lady Chaps, to jump-start a 5-0 LCU run, UTPB's Ava-

LUBBOCK CHRISTIAN UNIVERSITY WOMEN'S BASKETBALL GAME NOTES

Ion Munoz scored four straight points to put the Falcons a point back of LCU (7-6) with 4:30 remaining in the first quarter. LCU would then respond with the next 14 points, keeping UTPB off the scoreboard for 5:46.

LCU, beginning the run with a jumper from Audrey Robertson, closed the first quarter with an 8-0 run (led 15-6 at the end of the first quarter) and opened the second quarter with back-to-back three-pointers from Robertson to start the quarter on a 6-0 run for a 21-6 lead. Alexus Quaadman ended the Falcons dry spell with a layup, but UTPB would go scoreless another 4:32, as Robertson drained another three-pointer and LCU produced an 8-0 run. Grace Foster nailed a three-pointer to end the 8-0 run, which was part of a 22-2 scoring surge for the Lady Chaps. LCU's Carli Bostwick would produce six points in the quarter, with the points tallied during a 10-2 run to put LCU up 39-12 with 1:44 left in the half.

The Lady Chaps would outscore UTPB 26-8 in the second quarter and 34-8 over the final 14:30 of the half. LCU led 41-14 at the break off 63.6% (14/22) shooting. They were 5-of-8 (62.5%) from the outside. The Lady Chaps, who were 8-of-12 (66.7%) from the field in the second quarter, received 11 points in the first half from Audrey Robertson.

Each team would have a 7-0 run in the third quarter, as UTPB started to generate some offense. Quaadman was 5-of-5 from the field in the third quarter and tallied 10 points in the quarter for the Falcons, but LCU continued to roll. Three-pointers from Rachel Haase and Taylor Thomas helped LCU go on a 10-2 run and they had their largest lead of the game (55-25) with 3:18 remaining in the third quarter. LCU led 57-30 heading into the fourth quarter.

Freshman Martie McCoy was the only LCU starter to play in the fourth quarter. LCU scored 13 points in the fourth quarter and 10 were from freshmen. Tia Johnson led LCU with five points in the quarter.

The Lady Chaps received point-production from 12 of their 13 players, with Foster (13 points) and Robertson (11 points) finishing in double digits. LCU finished 53.2% (25/47) from the field and 45% (9/20) from three-point range. They were also 11-of-12 (91.7%) from the free-throw line.

UTPB received a game-high 17 points from Quaadman and 10 points from Kamari Portalis. The Falcons finished 33.3% (20/60) from the field.

FIVE THINGS ABOUT ASU

1 > The Belles completed the past season with a 26-7 record last season, which included a 26-7 conference record and a share of first place in the West Division (11-3 divisional record). ASU hosted the South Central Regional, where they would fall in the semifinals to UT Tyler.

2 > Angelo State takes a five-game win streak into Thursday's game in Canyon, Texas against West Texas A&M. ASU is 11-4 on the season and 5-1 in the LSC. They are one of three teams entering the week 2-0 in West Division play.

3 > ASU is picked to win the LSC this season, as they claimed the No.1 spot (of 16) in the conference's Preseason Coaches' Poll. They received 15 of the 54 first place votes.

4 > The Belles rank 12th nationally in assists per game with a pace of 17.4 per game. Sawyer Lloyd leads the LSC with 5.4 per game, which is 20th nationally. Lloyd also leads the LSC in assist/turnover ratio (2.25), ranking 58th nationally.

5 > Keniah Williams leads ASU in blocks (32), with a total that leads the LSC and is 13th nationally. Williams is 19th nationally with a LSC leading 2.13 blocks per game.

THE SERIES AGAINST ASU

LCU leads the series with a 16-6 all-time mark. ASU swept the season series last season, which included a 60-57 ASU win in their previous meeting (Feb. 2, 2023 in Lubbock), and has won the last three regular season meetings. The two teams have met 14 times since 2012, but had not met since Nov. 30, 2001 prior to that. LCU is 8-2 all-time against ASU in Lubbock. LCU has won five of the prior six meetings in Lubbock.

ACTIVE LADY CHAP LEADERS VS. ASU

Top-three LCU active career leaders against ASU:

Grace Foster 4gp, 9.3 points p/g, 7.8 reb. p/g
Audrey Robertson 6gp, 7.2 points p/g, 6 steals
Martie McCoy 2gp, 6.0 points p/g, 1/3 3-fg

PREVIOUS RECAP VS. ASU

Feb. 2, 2023 (Lubbock, Texas) – ASU: 60 – LCU: 57

The longest home win streak in NCAA Division II history is now history. No.14 Angelo State, behind 18 points from Tayjanna McGhee-Pleasant, was able to outlast Lubbock Christian University and a double-double from Grace Foster (21 points, 17 rebounds) 60-57, which ended LCU's historic home win streak at 113 inside Rip Griffin Center.

The previous LCU lost at home had been January 1, 2015 against Oklahoma City. LCU was in their final season of transitioning from the NAIA to NCAA Division II membership. To put it into perspective, Martie McCoy (the youngest member of the Lady Chaps) was 10 years old at the time of LCU's last home loss, and winning a national championship was a dream for the Lady Chaps, who have claimed three national titles during their journey of 113 consecutive home wins.

LCU has seen many heroic efforts and a little luck during the streak. On

GAME-BY-GAME RESULTS AND HIGHS

Opponent	Date	Score	Points	Rebounds	Assists	Steals	Blocked shots
UNION (TN)	11/03/23	78-87	16-Grace Foster Maci Maddox	7-Grace Foster	4-Martie McCoy Grace Foster Maci Maddox	3-Audrey Robertson	1-Grace Foster Martie McCoy
ADAMS ST.	11/05/23	69-65	28-Grace Foster	8-Grace Foster	4-Maci Maddox	3-Maci Maddox	1-Grace Foster Martie McCoy
at Colo. Christian	11/10/23	67-62	16-Audrey Robertson	6-Grace Foster Maci Maddox Audrey Robertson	4-Maci Maddox	3-Maci Maddox	1-Reese Schumann Audrey Spurgin
vs CSU Pueblo	11/11/23	71-60	24-Grace Foster	8-Grace Foster Audrey Robertson	5-Maci Maddox	5-Maci Maddox	1-Grace Foster
SOUTHWESTERN OKLA.	11/17/23	61-54	15-Maci Maddox	9-Grace Foster	6-Audrey Robertson	2-Maci Maddox	1-Grace Foster Martie McCoy
KING (TN)	11/18/23	82-42	14-Maci Maddox	5-Grace Foster Tia Johnson	4-Martie McCoy Shaylee Stovall	2-Kennedy Chappell Reese Schumann	1-Martie McCoy Reese Schumann
at Southern Nazarene	11/25/23	64-67	22-Grace Foster	5-Audrey Robertson Martie McCoy	5-Maci Maddox	3-Maci Maddox	2-Grace Foster
at Okla. Christian	11/30/23	69-65	20-Audrey Robertson	9-Grace Foster	2-Audrey Robertson Maci Maddox	1-Audrey Robertson Martie McCoy Grace Foster	1-Martie McCoy
at Ark.-Fort Smith	12/02/23	58-49	18-Audrey Robertson	7-Reese Schumann	4-Grace Foster	5-Maci Maddox	None
TEX. A&M INT'L	12/10/23	60-65	27-Grace Foster	5-Reese Schumann Grace Foster	7-Maci Maddox	3-Shaylee Stovall	2-Grace Foster
TEX. A&M-KINGSVILLE	12/12/23	42-28	21-Grace Foster	8-Grace Foster	3-Maci Maddox Grace Foster	3-Reese Schumann Shaylee Stovall	None
at Cameron	01/04/24	63-48	18-Grace Foster	9-Grace Foster	5-Maci Maddox	1-Martie McCoy Maci Maddox	1-Kennedy Chappell Reese Schumann
at Midwestern St.	01/06/24	68-61	21-Grace Foster	9-Grace Foster	7-Maci Maddox	1-Shaylee Stovall	1-Shaylee Stovall

March 10, 2018, Angelo State thought they had ended the streak and LCU's 2017-18 season at the 2018 NCAA Division II South Central Regional, as they had LCU down by four points with 35 seconds remaining, but Caitlyn Cunyus scored five straight points (her only points of the game) to help LCU end the Belles season.

Thursday was not a regional contest, but there was something at stake, as the winning team would move into sole possession of the Lone Star Conference's West Division. And, as LCU came back in that 2018 meeting, LCU attempted to rally back Thursday trailing 57-50 with 1:38 remaining. The seven-point lead lasted until Audrey Robertson had an old-fashion three-point play with 1:17 remaining to cut the deficit to 57-53. With 19 seconds remaining, Grace Foster scored to trim the deficit to 60-57. LCU quickly fouled Landry Morrow to put her to the free-throw line. She missed both free-throw attempts and LCU came away with the rebound. Maci Maddox transitioned up the floor, and knowing the Belles had a foul to give, heaved a halfcourt shot that sent the Rip Griffin Center into a frenzy as the shot was good. The crowd was quickly quieted as Maddox was fouled before the shot and the basket was waived off. Maddox had another attempt at tying the game, but her three-pointer (as time expired) was no good.

It was a back-and-forth contest featuring seven lead changes and the score tied on 10 occasions. Neither team led by more than five points until a 6-0 ASU run with 4:24 left put the Belles up 53-45. The 6-0 run matched LCU's longest run of the game, which took place in the first quarter and included four points from Maddox to turn a 4-1 deficit into a 7-4 lead. The score was tied 13-13 in before a three-pointer by McGhee-Pleasant helped ASU take a 16-15 lead into the second quarter.

The Belles, who led 28-26 at the half, never trailed (from the first quarter) until a 6-2 LCU run to open the second half put LCU up 32-30. Foster (9 points) and McCoy (2 points) had all the scoring in the third quarter for LCU until Shaylee Stovall hit LCU's first three-pointer of the game, which was the final bucket of the third quarter and gave LCU a 40-39 lead to take into the final quarter.

McGhee-Pleasant led ASU with 18 points off 3-of-6 shooting from three-point range. Sawyer Lloyd led ASU with 11 rebounds. The Belles improved to 19-3 overall and 14-2 in the LSC.

Foster's double-double was her team-leading eighth of the season and it included a career-high 17 rebounds, which is tied for the third-highest mark by a Lady Chaps member since 2009-2010. It was the highest total since Juliana Robertson had 18 last season (1/15/22) at UT Tyler.

LCU also received 12 points from Audrey Robertson and a career-high 10 points from McCoy. LCU shot 40.7% from the field (22/54) but struggled from long range, as they were 2-of-14 (14.3%) from outside the arc.

HEAD COACH STEVE GOMEZ

AT LCU: 21st Season (510-146)
OVERALL: 21st Season (510-146)

PERSONAL

HOMETOWN: Lubbock, Texas
SPOUSE: Shawna
CHILDREN: Hayden, Landon

EDUCATION

Lubbock Christian / 1988

COACHING EXPERIENCE

Lubbock Cooper High School (7 seasons)
LCU (20th season)

GOMEZ'S YEAR-BY-YEAR RESULTS

2003-2004	16-14	2022-2023	24-10
2004-2005	16-14	2023-2024	10-3
2005-2006	23-12		
2006-2007	26-7		
2007-2008	25-10		
2008-2009	27-7		
2009-2010	19-12		
2010-2011	23-10		
2011-2012	28-6		
2012-2013	31-4		
2013-2014	25-1		
2014-2015	21-7		
2015-2016	35-0		
2016-2017	19-11		
2017-2018	31-1		
2018-2019	32-5		
2019-2020	28-3		
2020-2021	23-0		
2021-2022	28-7		



The 2023-24 season marks Steve Gomez's 21st season at the helm of the Lady Chaps and the 11th season at the NCAA level. He opens the campaign with a 500-143 record, which includes a 24-3 record in NCAA postseason play.

In his first 10 seasons at the helm, as LCU was an NAIA institution, the Lady Chaps made 10 consecutive trips to the NAIA Division I Women's Basketball National Championship Tournament. Coach Gomez's arrival to the LCU women's basketball program certainly changed the foundation of the program. In those 10 seasons, LCU posted a 234-96 record under Gomez in the NAIA.

LCU jumped into NCAA Division II transition in 2013 (membership in 2015) and the winning tradition did not change. LCU went a remarkable 25-1 overall in 2013-2014 and they completed the Heartland Conference with a perfect 20-0 mark for their first perfect conference record in program history. They followed in 2014-2015 claiming Co-Heartland Conference Regular Season title honors after a 15-3 stretch in conference and a 21-7 overall season.

That led to an astounding 2015-2016 season, which was a season that started off with an exhibition game loss at NCAA Div. I No.1 Connecticut and ended with a perfect 35-0 season in LCU's first season eligible for NCAA postseason. They went 18-0 in Heartland Conference play to capture a regular season title and then a Heartland Conference Tournament title (first season eligible for the tournament). The Lady Chaps went on to capture a South Central Regional Tournament title and eventually their first NCAA Div. II National Title. Gomez claimed WBCA NCAA Div. II National Coach of the Year honors and also spent a portion of the offseason as a court coach at the 2016 USA Basketball Women's U17 World Championship Team Trials in Colorado Springs, Colo.

2016-17 served as a rebuilding year for the Lady Chaps, who returned one starter off the championship squad. Despite the rebuilding, LCU still went 19-11 overall and 12-4 in conference, en route to the Heartland Conference Tournament championship game, which they lost to St. Edward's. They bounced back in 2017-18, claiming another Heartland Conference regular season and tournament title, leading to Gomez receiving Heartland Conference Coach of the Year honors. The Lady Chaps hosted the NCAA Division II South Central Region Tournament for a second time.

and won the tournament to stamp their second berth towards an NCAA Division II Elite Eight Tournament loss. They lost to eventual national champion Central Missouri at the tournament held in Sioux Falls, S.D., ending their season with a 31-2 record.

The Lady Chaps returned to the Elite Eight Tournament for the third year in a four-year span in the 2018-19 season after claiming a Heartland Conference regular season and tournament title, along with a NCAA Division II South Central Region tournament championship after wins at Colorado Mesa and at home over Angelo State. LCU made an outstanding run towards their second NCAA Division II National Title, defeating Southwestern Oklahoma State in double overtime to claim the trophy. Gomez, who picked up his third Heartland Coach of the Year honor, became the seventh head coach in NCAA Division II women's basketball history to claim multiple titles. He also was named Female Team Coach of the Year at the West Texas Sports Persons of the Year Banquet following the season.

LCU's title defense was rudely interrupted by the COVID Pandemic in 2019-20. LCU was 28-3 and claimed the Lone Star Conference Championship during their first season in the conference. LCU was chosen to host the NCAA Division II South Central Regionals for a third time, but the COVID shutdown halted the remainder of the season less than 24 hours prior to the first tournament game.

COVID went from being a wall to a hurdle in 2020-21, and one the Lady Chaps would be able to jump over. Through many cancellations and unknowns, LCU claimed a Lone Star Conference title and went to Canyon, Texas, where they claimed a NCAA Division II South Central title and a berth to another NCAA Elite Eight Tournament in Columbus, Ohio. It was there, LCU would claim their third national title, with wins over Daemen, Central Missouri and Drury to complete a 23-0 perfect season. They were the first NCAA Division II program to complete two undefeated seasons.

The Lady Chaps were preseason favorites to open the 2021-22 season. LCU surpassed a NCAA Div. II record 100 consecutive home wins during the season, which ended at the South Central Regional with LCU falling in the title game to conclude the season with a 28-7 record.

His 20th season was a memorable one, as for the first time in his coaching tenure, he had five new starters entering the season. A season that would end with a 24-11 record, a co-divisional title and as regional finalist falling in the South Central Region Championship Game in San Angelo, Texas. Lubbock Christian closed the 2021-22 season holding a 266-47 record (85.0%) since leaving the NAIA.

In their final two seasons in the NAIA (2011-2012, 2012-2013), LCU set program single-season win records in each of the seasons. The Lady Chaps went 31-4 in 2013-2014, setting a program single-season wins mark (31). The Lady Chaps won their first ever Sooner Athletic Conference Tournament title en route to their final trip to the NAIA National Championship tournament. In 2011-2012, LCU went 28-6 and made their second ever appearance in the Semifinals of the NAIA National Championship Tournament. They lost out to eventual national champions Oklahoma City to mark the second consecutive season in which they lost out to the team who would claim the title. LCU claimed their second Sooner Athletic Conference crown in program history, as they joined Oklahoma City as conference co-champions with a 21-1 record. They handed OCU their only loss of the season.

LCU went 25-10 in 2010-2011 and marched into the Elite Eight for a third time in program history. The Lady Chaps, who finished third in the Sooner Athletic Conference, lost in the NAIA National Championship to eventual national champion Azusa Pacific. LCU went 19-12 in the 2009-2010 season, which included a 13-9 finish in the Sooner Athletic Conference, and had their season come to an end in the National Tournament. The highlight of the season was an exhibition victory inside the United Spirit Arena against Texas Tech University.

In 2009-2010, the Lady Chaps finished with a solid 27-7 record and made a trip to the Sweet Sixteen of the National Tournament following a second-place Sooner Athletic Conference season. Gomez chalked up a milestone during the season, becoming the all-time women's basketball wins leader at LCU. They had a memorable 2007-2008 campaign, as the Lady Chaps made another voyage to the NAIA National Tournament. The Lady Chaps completed a 25-10 season, which included a trip to the Elite Eight in the tournament for their second best finish in program history.

In 2006-2007, Gomez led the Lady Chaps to a myriad of firsts in their near-thirty year history. Lubbock Christian never left the top-10 in the NAIA National Poll, and set a school mark for wins in a season with 26, eclipsing the school mark of 23 they set the prior season. In addition, LCU made its fourth consecutive trip to the NAIA National Tournament, finishing in the Sweet Sixteen and most impressively, the Lady Chaps captured a share of the Sooner Athletic Conference regular season championship, becoming the first school from outside of the State of Oklahoma to do so in the thirty-one years since the conference was founded. In 2005-2006, Gomez's Lady Chaps enjoyed what was arguably at the time the best season in school history, as they finished with an overall record of 23-12, and made an unparalleled run at the NAIA National Tournament. Seeded sixth in their eight team bracket in the tournament, Gomez's girls proceeded to oust four of the top six teams in the nation and become the lowest seed ever to reach either the Fab Four or National Championship; appropriately enough, he was named the SAC's Coach of the Year.

Gomez's Lady Chaps went 16-14 in his first season and finished fifth in the Sooner Athletic Conference. While this might appear to be an average year, big wins for the Lady Chaps and entry into the NAIA National Poll for the first time proved good enough for an at-large bid to the NAIA National Tournament: LCU women's first trip to the big dance. In his second season, the Lady Chaps were able to maintain that level of success. After getting off to the best conference start since joining the Sooner Athletic Conference at 6-2, LCU finished SAC play at 10-8, good enough for another fifth place finish, and for the second season in a row, Coach Gomez guided the Lady Chaps to the NAIA National Tournament.

An LCU graduate, Gomez was a standout perimeter player for Coach John Copeland in the late 1980s, and to this day, he still holds the school record for career free throw percentage at .855. He graduated in 1988 with a Bachelor's of Science Degree in Mathematics and consistently used his degree to teach in the classroom while pursuing coaching on the sidelines. Gomez's career began at Lubbock Monterey High School where he served as an assistant coach in the men's basketball program from 1988 to 1995. In 1996, Gomez accepted the men's basketball head coaching position at Lubbock Cooper High School, where he remained until returning to Lubbock Christian University to take over the reigns of the Lady Chaps in 2003. During his seven seasons at Cooper, the basketball program broke new ground making the playoffs four times, managing the school's first state ranking, and capturing the Pirates only district championship in Gomez's final season. One of the main reasons Coach Gomez is so successful on the court is the support he receives off of it. Steve has been married to his wife Shawna for 32 years, and the couple has two sons: Hayden and Landon. Landon serves on the women's basketball coaching staff at LCU.





LONE STAR CONFERENCE

LSC WEEKEND SCHEDULE

Thursday, Jan. 11

Texas A&M-Kingsville at UAFS
 Texas Woman's at St. Mary's
 Texas A&M International at Oklahoma Christian
 UT Tyler at St. Edward's
 UT Permian Basin at Lubbock Christian
 Angelo State at West Texas A&M
 Cameron at Eastern New Mexico
 Midwestern State at Western New Mexico

Saturday, Jan. 13

Cameron at Western New Mexico
 UT Permian Basin at West Texas A&M
 UT Tyler at St. Mary's
 Angelo State at Lubbock Christian
 Texas Woman's at St. Edward's
 Texas A&M-Kingsville at Oklahoma Christian
 Texas A&M International at UAFS
 Midwestern State at Eastern New Mexico

LSC PLAYERS OF THE WEEK

Date	Offensive	Defensive
11/7	Ashley Ingram (TWU)	Ngozi Obineke (TAMU)
11/14	Leila Patel (TWU)	Maci Maddox (LCU)
11/21	Andreea Mancha (UTPB)	Avalon Munoz (UTPB)
11/28	Sawyer Lloyd (ASU)	Malea Brown (TAMU)
12/4	Tay McGhee-Pleasant (ASU)	Montse Gutierrez (UTT)
12/11	Grace Foster (LCU)	NyalamThabach (WT)
12/18	Tina Machalova (UTT)	Catalina Cortez (MSU)
1/2	Tina Machalova (UTT)	Raiana Brown (TAMU)
12/8	Grace Foster (LCU)	Ashley Ingram (TWU)

PRESEASON POLL

School	1st	Total Points
1 Angelo State (15)	652	15
2 Texas Woman's (17)	633	17
3 UT Tyler (9)	627	9
4 Lubbock Christian (3)	606	3
5 West Texas A&M	524	
6 Texas A&M-Kingsville	492	
7 St. Edward's	379	
8 Cameron	311	
9 Oklahoma Christian	270	
10 UT Permian Basin	270	
11 Eastern New Mexico	248	
12 Western New Mexico	233	
13 Texas A&M International	225	
14 UAFS	202	
15 Midwestern State	172	
16 St. Mary's	140	



KAYCIE WILSON - ASSISTANT COACH

Kaycie joined the LCU women's basketball coaching staff in the 2014-15 season as a graduate assistant through the 2015-16 season. She has played an integral role in the coaching staff for all three NCAA national championships. Wilson was named to the Dave Campbell's Texas Basketball Top-40 Coaches Under-40 List in 2021. She spent her senior season (2013-14) playing in the interior of LCU's first season in the Heartland Conference, which went 20-0 in conference for a regular season first place finish. She spent three seasons (09/10 - 11/12) at NCAA Div. I Missouri-Kansas City, where she combined to average 4.9 points and 3.9 rebounds in 87 games. The forward also combined for 44 steals, 95 assists and 34 blocks for UMKC (21 blocks as a sophomore). Boyles was a multiple recipient on The Summit League Winter/Spring Academic All-League Team and the Commissioner's List of Academic Excellence as a distinguished scholar. She is a Lubbock native and a product of Coronado High School, where she was rated the No.45 best forward in the nation by Collegiate Girls Basketball Report and the No.55 best player in Texas by Premier Basketball Report. The multi-winning All-State recipient was named the Girls Basketball Player of the Year by the Lubbock Avalanche Journal, as well as the 2009 5A-4A All-South Plains Player of the Year after 17.6 points and 7.9 rebounds a game.



LANDON GOMEZ - ASSISTANT COACH

Landon, the son of Steve Gomez (women's basketball head coach) joined the Lady Chaparrals in his current role prior to the 2023-24 season. While earning a Bachelor's degree in Exercise Sports Science (ESS) at LCU (2017-2021), Landon spent three seasons as a student-assistant coach with the Lady Chaparrals. Landon was part of the 2019 and 2021 NCAA Division II national championship squads. He went on to complete a Masters of Science (degree) in Sport Management at Texas Tech, where he served as a graduate-assistant coach for the Lady Raiders basketball program. At Tech, Landon was on staff from 2021-23 and assisted in scouting reports and oversaw the scout/practice teams. The Lady Raiders made their first post-season appearance (WNIT) since the 2012-13 season and made a berth to the Super Sixteen (round).

Women's Basketball Support Staff



Volunteer Assistant Coach
Julio Pacheco



Sports Information Contact
Chris Due



Assistant Athletic Trainer
Courtney Burgess ATC/L



Student Trainer
Amberlee Aduddell



Student Assistant
Whitney Cox



Student Assistant
Cara Paschall



Student Assistant
Bri Pruitt

2023-24 LONE STAR CONFERENCE STANDINGS

School	Div	DPct.	Conf	CPct.	Overall	Pct.	Streak	Home	Away	Neutral
East Division										
UT Tyler	3-0	1.000	7-0	1.000	13-3	.812	W11	8-0	4-1	1-2
Texas A&M International	3-0	1.000	5-2	.714	13-2	.867	W4	7-1	2-1	4-0
Texas Woman's	2-1	.667	6-1	.857	12-3	.800	W2	7-1	3-2	2-0
Texas A&M-Kingsville	2-1	.667	2-5	.286	6-8	.429	W2	2-2	2-3	2-3
UAFS	1-2	.333	2-5	.286	4-9	.308	L2	2-4	2-5	0-0
St. Edward's	0-2	.000	2-4	.333	5-7	.417	L2	4-2	1-4	0-1
St. Mary's	0-2	.000	2-4	.333	2-10	.167	L5	1-3	1-4	0-3
Oklahoma Christian	0-3	.000	1-6	.143	2-9	.182	L5	1-2	0-5	1-2
West Division										
UT Permian Basin	2-0	1.000	5-1	.833	10-2	.833	W6	6-0	1-2	3-0
Lubbock Christian	2-0	1.000	5-1	.833	10-3	.769	W3	4-2	5-1	1-0
Angelo State	2-0	1.000	5-1	.833	11-4	.733	W5	4-2	3-0	4-2
Midwestern State	2-1	.667	3-4	.429	3-10	.231	L1	2-5	1-3	0-2
West Texas A&M	1-1	.500	4-2	.667	9-5	.643	W1	2-1	3-3	4-1
Western New Mexico	0-2	.000	2-4	.333	7-4	.636	L2	4-0	1-4	2-0
Eastern New Mexico	0-2	.000	0-6	.000	4-8	.333	L6	2-2	2-6	0-0
Cameron	0-3	.000	1-6	.143	3-10	.231	L3	2-5	1-5	0-0

2023-2024 LCU ROSTER

No.	Name	Pos.	Ht.	Cl.	Yrs.Left	Hometown School	High School
0	Grace Foster	FW	6-1	Jr.	2	Childress, Texas	Childress H.S.
1	Kennedy Chappell	G	5-9	Fr.	4	Heath, Texas	Dallas Christian H.S.
2	Maci Maddox	G	5-7	Sr.	1	Lubbock, Texas	Frenship HS
3	Audrey Robertson	G	5-8	Sr.	1	Kerrville, Texas	Tivy HS
4	Kimber Mathews	G	5-9	Fr.	4	Gruver, Texas	Gruver H.S.
11	Taylor Allen	G	5-9	Fr.	4	Roscoe, Texas	Highland H.S.
12	Taylor Thomas	G	5-9	So.	3	Canyon, Texas	Canyon H.S.
15	Shaylee Stovall	G	5-6	Sr.	1	Idalou, Texas	Idalou HS
22	Rylee Verduin	FW	6-2	Fr.	4	Wylie, Texas	Homeschool
23	Martie McCoy	FW/G	5-11	So.	3	Muenster, Texas	Muenster H.S.
30	Audrey Spurgin	P	6-2	Jr.	2	Fredericksburg, Texas	Fredericksburg H.S.
31	Tia Johnson	FW/G	5-9	So.	3	Lubbock, Texas	Brownfield H.S.
33	Deja Johnson	FW/G	5-9	So.	3	Lubbock, Texas	Brownfield H.S.
40	Reese Schumann	P	6-1	Jr.	2	Houston, Texas	Clear Lake H.S.

Head Coach: Steve Gomez

Assistant Coaches: Kaycie Wilson, Landon Gomez,

Julio Pacheco (Vol. Asst.)



PRONUNCIATIONS

CHAPPELL: chap-el (like a church service)
 STOVALL: stow-VAHL
 VERDUIN: ver-DUE-in
 DEJA (Johnson): DAYja
 SPURGIN: spurJEN
 SCHUMANN: shewman

GEO PRONUNCIATIONS

Gruver: GREW-ver
 Idalou: EYE-d'LEW
 Kerrville: K'RRville
 Lubbock: Luhbuck
 Muenster: MUHNster
 Tivy: TY-vee

CHAPS: shhapps (not CH-apps)

NCAA DIVISION II POLLS



WBCA DIV.II TOP 25 (1/9/24)

Rank	School	Pts	1st.	Prev.
1	Grand Valley State (12-1)	573	21	1
2	Ashland (12-1)	550	1	2
3	Gannon (15-1)	523	0	3
4	Catawba (10-1)	495	0	4
5	Union, TN (14-1)	476	0	6
6t	Southern Nazarene (12-0)	429	1	7
6t	Thomas Jefferson (12-1)	429	0	8
8	Colorado Mines (12-1)	393	0	9
9	Fairmont State (11-1)	329	0	12
10	Virginia State (13-1)	305	0	13
11	Ferris State (8-2)	297	0	5
12	Northwestern Okla. St (13-1)	271	0	19
13	Harding (11-1)	244	0	20
14	Montana State Billings (13-3)	230	0	17
15	Fort Hays State (12-2)	225	0	10
16	Texas Woman's (12-3)	217	0	18
17	Central Missouri (10-3)	211	0	11
18	Bentley (10-2)	196	0	22
19	Valdosta State (11-2)	147	0	23
20	Pittsburg State (11-2)	122	0	16
21t	Texas A&M International (13-2)	121	0	25
21t	Western Washington (10-3)	121	0	14
23	Fayetteville State (12-1)	76	0	RV
24	Tampa (13-4)	61	0	15
25	Miles (9-1)	59	0	RV

Receiving Votes: Azusa Pacific (12-3) 44; Assumption (9-3) 43; Anderson, SC (10-2) 35; Minnesota State Mankato (10-4) 31; Texas-Tyler (13-3) 31; Drury (9-4) 27; Glenville State (8-4) 16; Northwest Missouri State (12-2) 15; Rollins (9-3) 14; Kentucky State (11-2) 13; North Georgia (9-3) 7; Cal State San Marcos (9-3) 6; Georgia Southwestern (8-2) 5.



D2CSC DIV.II TOP 25 (1/9/23)

Rank	School	Rec	Pts	Prev.
1	Grand Valley State (13)	12-1	395	1
2	Southern Nazarene (2)	12-0	374	2
3	Ashland	12-1	364	4
4	Gannon (1)	15-1	356	5
5	Colorado Mines	12-1	329	8
6	Catawba	10-1	301	9
7	Union	14-1	300	16
8	Bentley	10-2	282	6
9	Montana State Billings	13-3	259	15
10	Jefferson	12-1	257	10
11	Fairmont State	11-1	206	RV
12	Pittsburg State	11-2	204	13
13	Ferris State	8-1	192	11
14	Valdosta State	11-2	168	RV
15	Harding	11-1	162	NR
16	Western Washington	10-3	161	19
17	Texas Tyler	13-3	151	NR
18	Lincoln Memorial	10-1	120	NR
19	Fayetteville State	12-1	116	RV
20	Azusa Pacific	10-3	84	24
21	Texas A&M International	13-2	75	RV
22	Virginia State	13-1	53	RV
23	Northwest Missouri State	12-2	51	RV
24	Nova Southeastern	10-3	49	NR
25	Texas Woman's	12-3	32	3

RV: Anderson (29); Ursuline (29); Fort Hays State (27); Dominican (Calif.) (19); Southern New Hampshire (18); Tampa (13); Central Missouri (10); Pace (5); Lock Haven (3); Northwest Oklahoma State (3); Cal State-San Marcos (2); Lubbock Christian (1)



NCAA SOUTH CENTRAL REGIONAL RANKINGS

Schools vs. D2 rec. In-Region



D2CSC SOUTH CENTRAL REGION POLL

Rank	School (First-Place Votes)	W-L	Pts.	Prev.
1	Colorado Mines (6)	12-1	60	2
2	Texas Tyler	13-3	50	5
3	Texas A&M International	13-2	44	4
4	Texas Woman's	12-3	40	1
5	Lubbock Christian	10-3	30	6
6	Texas Permian Basin	10-2	27	T-7
7	Adams State	11-4	24	3
8	Colorado Mesa	11-3	20	9
9	Angelo State	11-4	15	T-7
10	Regis	10-3	12	10

WEBSITE & BROADCAST PARTNERS

ON THE NET - WWW.LCUCAPS.COM

The official website of LCU Athletics is where you can find everything relating to the LCU basketball teams. Schedules, results, rosters, bios, statistics and game notes can be found there.

ON THE AIR

Each game will be broadcast on the LSC Digital Network as an option for fans unable to attend. The LSC Digital Network will offer season passes for basketball, giving fans access to all regular-season contests on the network for that sport. In addition, viewers will continue to have the option to purchase a \$10 day pass that provides access to all broadcasts aired that day and access to all archived content for 24 hours.

2022-23 LSC Digital Network Rates

24-Hour Day Pass:	\$10.00
Men's and Women's Basketball Season Pass:	\$75.00
Archive Download:	\$10 per broadcast

The LSC Digital Network enters its fourth season in 2022-23, showcasing academic and athletic events from the league, its 17 member institutions and three football affiliates in partnership with BlueFrame powered by Hudl. Fans can watch broadcasts and purchase passes online at www.lonestarconferencenetwork.com on computer and mobile devices. Viewers can also tune in to games on the LSC Digital Network via OTT apps available on Apple TV, Amazon Fire TV, Android TV and Roku by searching for "LSC Digital Network."



DIGITAL NETWORK

Great Start, Better Finish, as LCU Tops MSU in Overtime

LCU Opened The Game 11-of-12 From The Field and Forced MSU to Close Game 2-of-17 From The Field



68

JAN. 6 - WICHITA FALLS, TEXAS

LIGON COLISEUM



61

Lubbock Christian University posted 27 points in the opening quarter, but a 7-0 run to close the game in overtime is what was needed to extend LCU's road win streak to four games, as Grace Foster (21 points) and Audrey Robertson (18 points) combined for 39 points and the Lady Chaparrals ended Midwestern State's three-game win streak with a 68-61 West Division win in Lone Star Conference play Saturday inside Ligon Coliseum.

The Lady Chaps (10-3, 5-1) had four players score in double figures, led by Grace Foster, who had 21 points, nine rebounds and six assists. Robertson tacked on 18 points and seven rebounds and Maci Maddox chipped in as well with 13 points, eight rebounds and seven assists.

The Lubbock Christian offense was very productive from downtown, knocking down nine threes on 17 attempts (52.9%). Maddox (3-of-4) and Foster (3-of-6) combined for six of the three-pointers and were a combined to go 6-of-10 from long range.

Lubbock Christian's defense held Midwestern State to only 13.3 percent shooting from beyond the arc (2-of-15) and 30.5 percent from the field. MSU (3-10, 3-4), who received 24 points from Kertisa Amos and 23 points from Zarria Carter, only committed six turnovers in the game, as they out-scored LCU 17-6 in points-off-turnovers. Carter (14) and Amos (10) each had double figures in rebounds to complete double-double performances against LCU.

How It Happened

After jumping out to a 14-10 advantage, Lubbock Christian went on an 11-0 run with 4:39 left in the first quarter, culminating in a bucket from Foster, to increase its lead to 25-10 (LCU's largest of the game). The Lady Chaps then maintained that lead and entered the quarter break with a 27-12 advantage. Lubbock Christian relied on its three-point shooting in the period, knocking down five shots to account for 15 of its 27 points. LCU was 11-of-12 (91.7%) from the field in the quarter, with Maddox leading LCU with eight points.

The Lady Chaps astronomical shooting numbers came back to Earth in the second quarter, as LCU opened the quarter 1-of-7 from the field. Foster led LCU with seven points in the frame and LCU, going 5-of-15 for 33.3% shooting from the field in the quarter, never let go of the double-figure lead in the quarter and took a 38-27 lead into the half. Maddox had eight points, seven rebounds and four assists in the first half, as LCU was led in scoring in the half by Foster's 12 points. MSU, with Amos (13) and Carter (12) combining for 25 points in the half, had a 5-0 scoring advantage from the free-throw line to keep the game in reach.

Lubbock Christian was able to surge on a 7-0 run, punctuated by a three from Shaylee Stovall, to match its largest lead at 47-32 with 6:34 to go in the third quarter. MSU was able to chip away and cancelled out LCU's largest lead, as both teams had 13 points tallied in the half, and LCU took an 11-point lead into the fourth quarter (51-40).

MSU opened the fourth quarter 4-of-5 from the field and used a 9-1 run to cut LCU's lead to 52-49 with 7:43 remaining (9-1 run to open the quarter was part of an 12-1 run). LCU went a span of 6:42 without a field goal, and Foster's layup with 4:22 remaining in the quarter ended the timing sequence and ended an overall 18-3 run. Foster's bucket also regained the LCU lead. Maddox drained a three-pointer with 3:44 remaining for a 59-57, but MSU's Makayla Coy tied the game with a jumper as 2:27 remained. MSU only attempted one field goal the remainder of regulation, while LCU missed their final four field goal attempts in regulation.

With the game tied 61-61 in overtime, LCU closed the game with a 7-0 run to claim the 68-61 victory. MSU was 1-of-9 (11.1%) from the field in the overtime frame, as LCU was 3-of-5 (60%) with four points from Audrey Robertson. Shaylee Stovall had a key steal and Foster nailed a big three-pointer, which were vital plays in the extra frame to push LCU to the overtime road win.

Lubbock Christian 68 • 10-3,5-1 Lone St																			
		Total			3-Ptr			Rebounds			PF			A TO Blk Stl			Min		
#	Player	FG	FGA	FT	FTA	Off	Def	Off	Def	Tot	P	T	P	A	T	Blk	Stl	Min	
00	Grace Foster	f	8-14	3-6	2-2	0	9	9	2	21	6	5	0	0	0	0	0	43	
23	Martie McCoy	f	0-0	0-0	0-0	0	0	0	2	0	0	0	0	0	0	0	0	1	
02	Maci Maddox	g	4-11	3-4	2-4	0	8	8	1	13	7	2	0	0	0	0	0	44	
03	Audrey Robertson	g	8-16	1-4	1-2	4	3	7	1	18	3	3	0	0	0	0	0	36	
15	Shaylee Stovall	g	1-4	1-2	0-0	0	4	4	1	3	1	0	1	1	0	1	1	31	
01	Kennedy Chappell		1-2	1-1	0-0	0	4	4	1	3	1	2	0	0	0	0	0	14	
11	Taylor Allen		0-1	0-0	0-0	0	0	0	0	0	0	0	1	0	0	0	0	3	
12	Taylor Thomas		0-1	0-0	0-0	0	0	0	0	1	0	0	1	0	0	0	0	10	
30	Audrey Spurgin		0-1	0-0	0-2	1	5	6	2	0	0	0	3	0	0	0	0	23	
31	Tia Johnson		0-0	0-0	0-0	0	0	0	0	0	0	0	0	0	0	0	0	1	
40	Reese Schumann		5-8	0-0	0-0	2	3	5	5	10	0	0	0	0	0	0	0	19	
Team			1-2			0-0			1-2			0-0			0-0			1	
Totals			27-58			9-17			5-10			8-38			46-66			68	18 18 1 1 225
1st - FG %:		11-12 91.7%			2nd: 5-15 33.3%			3rd: 6-15 40.0%			4th: 2-11 18.2%			Game: 27-58 46.6%			Deadball		
3FG %:		5-6 83.3%			1-3 33.3%			1-4 25.0%			1-3 33.3%			9-17 52.9%			Rebounds		
FT %:		0-2 0.0%			0-2 0.0%			0-0 0.0%			3-4 75.0%			5-10 50.0%			2		
Midwestern St. 61 • 3-10,3-4 Lone St																			
		Total			3-Ptr			Rebounds			PF			A TO Blk Stl			Min		
#	Player	FG	FGA	FT	FTA	Off	Def	Off	Def	Tot	P	T	P	A	T	Blk	Stl	Min	
00	Zarria Carter	f	11-28	0-0	1-1	9	5	14	3	23	2	1	2	42					
10	Makayla Coy	f	2-6	0-0	2-2	3	7	10	0	6	1	0	0	2	32				
22	Kertisa Amos	f	10-24	0-0	4-5	2	8	10	3	24	3	3	0	3	40				
01	Eternity Jackson	g	0-3	0-2	0-0	0	2	2	1	0	1	0	0	0	24				
11	Catalina Cortez	g	1-9	1-7	0-0	1	0	1	3	3	1	1	0	0	42				
05	Zionna Barbee		0-1	0-0	0-0	1	1	2	0	0	0	0	0	0	10				
12	Markayla Johnson		0-0	0-0	0-0	0	0	0	0	0	0	0	0	0	1				
13	Kyla Speights		0-0	0-0	0-2	0	0	0	0	0	0	0	0	0	3				
23	Nikki Green		1-8	1-6	2-2	0	1	1	2	5	3	0	2	0	28				
25	Keara Felix		0-3	0-0	0-0	1	1	2	1	0	1	0	0	0	3				
Team			3-14			0-0			3-14			1-1			1-1			1	
Totals			25-82			2-15			9-12			20-26			46-66			61	12 6 3 7 225
1st - FG %:		6-17 35.3%			2nd: 5-16 31.3%			3rd: 5-20 25.0%			4th: 8-20 40.0%			Game: 25-82 30.5%			Deadball		
3FG %:		0-2 0.0%			0-2 0.0%			1-5 20.0%			1-3 33.3%			2-15 13.3%			Rebounds		
FT %:		0-2 0.0%			5-6 83.3%			2-2 100.0%			2-2 100.0%			9-12 75.0%			2		
Officials: Paige Parliament, Tommy Procise, Chet Martin																			
Technical fouls: Lubbock Christian-None. Midwestern St.-None.																			
Attendance: 562																			
2023-24 Women's Basketball. Round: 0. Lubbock Christian vs Midwestern St.. Pla																			
Score by periods						1st	2nd	3rd	4th	OT	Total								
Lubbock Christian						27	11	13	8	9	68	Points	In	T/O	Off	Chance	Break	Bench	
Midwestern St.						12	15	13	19	2	61	LCU	30	6	4	10	13		
												MSU	28	17	15	6	5		
Last FG - LCU OT-01:09, MSU OT-03:14.																			
Largest lead - LCU by 15 1st-01:13, MSU by 2 1st-08:30.																			
LCU led for 37:51. MSU led for 01:32. Game was tied for 05:37.																			
Score tied - 5 times.																			
Lead changed - 6 times.																			



2023-24 STATISTICS

RECORD:	OVERALL	HOME	AWAY	NEUTRAL
ALL GAMES	10-3	4-2	5-1	1-0
CONFERENCE	5-1	1-1	4-0	0-0
NON-CONFERENCE	5-2	3-1	1-1	1-0

#	Player	gp-gs	min	avg	Total		3-Point		F-Throw		Rebounds				pf	dq	a	to	blk	stl	pts	avg
					fg-fga	fg%	3fg-fga	3fg%	ft-fa	ft%	off	def	tot	avg								
00	Grace Foster	13-13	431	33.2	73-148	.493	20-47	.426	68-74	.919	4	83	87	6.7	20	0	38	46	8	6	234	18.0
01	Kennedy Chappell	13-0	185	14.2	16-30	.533	5-11	.455	13-19	.684	5	22	27	2.1	12	0	8	10	1	6	50	3.8
02	Maci Maddox	13-13	491	37.8	67-150	.447	13-34	.382	20-24	.833	9	43	52	4.0	20	0	49	35	0	26	167	12.8
03	Audrey Robertson	13-12	392	30.2	59-117	.504	13-29	.448	23-33	.697	16	38	54	4.2	24	0	25	28	0	12	154	11.8
04	Kimber Mathews	1-0	11	11.0	1-2	.500	1-1	1.000	2-2	1.000	1	0	1	1.0	3	0	0	0	0	0	5	5.0
11	Taylor Allen	6-0	33	5.5	5-9	.556	1-1	1.000	0-0	.000	2	2	4	0.7	1	0	2	2	0	2	11	1.8
12	Taylor Thomas	13-1	159	12.2	9-28	.321	2-8	.250	11-13	.846	4	10	14	1.1	15	1	6	12	0	6	31	2.4
15	Shaylee Stovall	13-13	343	26.4	23-71	.324	10-37	.270	22-23	.957	5	12	17	1.3	20	0	14	13	1	17	78	6.0
23	Martie McCoy	13-13	233	17.9	11-35	.314	0-7	.000	10-14	.714	10	37	47	3.6	37	1	15	18	5	5	32	2.5
30	Audrey Spurgin	13-0	148	11.4	13-31	.419	0-0	.000	11-22	.500	7	18	25	1.9	18	0	1	12	1	1	37	2.8
31	Tia Johnson	7-0	27	3.9	1-2	.500	0-1	.000	0-0	.000	0	5	5	0.7	3	0	4	7	0	1	2	0.3
33	Deja Johnson	5-0	21	4.2	3-6	.500	2-4	.500	0-0	.000	1	3	4	0.8	4	0	0	2	0	1	8	1.6
40	Reese Schumann	13-0	176	13.5	16-36	.444	0-0	.000	11-17	.647	19	22	41	3.2	31	3	8	12	3	9	43	3.3
	Team										12	32	44				18					
	Total.....	13	2650		297-665	.447	67-180	.372	191-241	.793	95	327	422	32.5	208	5	170	215	19	92	852	65.5
	Opponents.....	13	2650		277-722	.384	67-230	.291	132-194	.680	146	289	435	33.5	244	3	141	227	30	97	753	57.9

TEAM STATISTICS	LCU	OPP
SCORING	852	753
Points per game	65.5	57.9
Scoring margin	+7.6	-
FIELD GOALS-ATT	297-665	277-722
Field goal pct	.447	.384
3 POINT FG-ATT	67-180	67-230
3-point FG pct	.372	.291
3-pt FG made per game	5.2	5.2
FREE THROWS-ATT	191-241	132-194
Free throw pct	.793	.680
F-Throws made per game	14.7	10.2
REBOUNDS	422	435
Rebounds per game	32.5	33.5
Rebounding margin	-1.0	-
ASSISTS	170	141
Assists per game	13.1	10.8
TURNOVERS	215	227
Turnovers per game	16.5	17.5
Turnover margin	+0.9	-
Assist/turnover ratio	0.8	0.6
STEALS	92	97
Steals per game	7.1	7.5
BLOCKS	19	30
Blocks per game	1.5	2.3
ATTENDANCE	1649	1421
Home games-Avg/Game	6-275	6-226
Neutral site-Avg/Game	-	1-65

Date	Opponent		Score	Att.
11/03/23	UNION (TN)	L	78-87	347
11/05/23	ADAMS ST.	W	69-65	287
11/10/23	at Colo. Christian	Wot	67-62	126
11/11/23	vs CSU Pueblo	W	71-60	65
11/17/23	SOUTHWESTERN OKLA.	W	61-54	208
11/18/23	KING (TN)	W	82-42	192
11/25/23	at Southern Nazarene	L	64-67	350
11/30/23	at Okla. Christian	W	69-65	120
12/02/23	at Ark.-Fort Smith	W	58-49	138
12/10/23	TEX. A&M INT'L	L	60-65	301
12/12/23	TEX. A&M-KINGSVILLE	W	42-28	314
01/04/24	at Cameron	W	63-48	60
01/06/24	at Midwestern St.	Wot	68-61	562

* - Conference game

Score by Periods	1st	2nd	3rd	4th	OT	Totals
Lubbock Christian	228	194	207	204	19	852
Opponents	170	192	194	190	7	753

CONFERENCE STATISTICS

#	Player	Total		3-Point			F-Throw		Rebounds				pf		dq		a		to		blk		stl		pts	avg
		gp-gs	min	avg	fg-fga	fg%	3fg-fga	3fg%	ft-fa	ft%	off	def	tot	avg												
00	Grace Foster	6-6	210	35.0	39-77	.506	12-28	.429	26-28	.929	2	40	42	7.0	7	0	20	15	2	4	116	19.3				
01	Kennedy Chappell	6-0	79	13.2	6-10	.600	5-5	1.000	2-4	.500	2	14	16	2.7	4	0	4	6	1	0	19	3.2				
02	Maci Maddox	6-6	229	38.2	24-61	.393	7-18	.389	9-12	.750	4	18	22	3.7	7	0	24	17	0	8	64	10.7				
03	Audrey Robertson	6-6	183	30.5	31-62	.500	7-15	.467	12-19	.632	13	14	27	4.5	13	0	8	12	0	3	81	13.5				
11	Taylor Allen	5-0	20	4.0	1-2	.500	0-0	.000	0-0	.000	0	1	1	0.2	1	0	0	2	0	1	2	0.4				
12	Taylor Thomas	6-0	68	11.3	1-12	.083	0-4	.000	3-4	.750	2	4	6	1.0	5	0	1	5	0	1	5	0.8				
15	Shaylee Stovall	6-6	167	27.8	9-38	.237	2-18	.111	5-5	1.000	3	7	10	1.7	11	0	4	8	1	7	25	4.2				
23	Martie McCoy	6-6	94	15.7	1-13	.077	0-4	.000	4-7	.571	7	16	23	3.8	17	1	5	7	1	2	6	1.0				
30	Audrey Spurgin	6-0	66	11.0	4-12	.333	0-0	.000	3-8	.375	1	5	6	1.0	5	0	0	6	0	0	11	1.8				
31	Tia Johnson	3-0	6	2.0	0-0	.000	0-0	.000	0-0	.000	0	0	0	0.0	0	0	0	2	0	1	0	0.0				
33	Deja Johnson	4-0	6	1.5	0-1	.000	0-0	.000	0-0	.000	1	1	2	0.5	1	0	0	1	0	0	0	0.0				
40	Reese Schumann	6-0	97	16.2	12-24	.500	0-0	.000	7-11	.636	12	16	28	4.7	22	3	4	8	1	4	31	5.2				
Team											8	15	23				9									
Total.....		6	1225		128-312	.410	33-92	.359	71-98	.724	55	151	206	34.3	93	4	70	98	6	31	360	60.0				
Opponents.....		6	1225		122-328	.372	20-89	.225	52-79	.658	63	136	199	33.2	104	2	63	96	13	36	316	52.7				

Date	Opponent	Score
* 11/30/23	at Okla. Christian	w 69-65
* 12/02/23	at Ark.-Fort Smith	w 58-49
* 12/10/23	TEX. A&M INT'L	L 60-65
* 12/12/23	TEX. A&M-KINGSVILLE	w 42-28
* 01/04/24	at Cameron	w 63-48
* 01/06/24	at Midwestern St.	Wot 68-61

* - Conference game

HOME STATISTICS

#	Player	Total		3-Point			F-Throw		Rebounds				pf		dq		a		to		blk		stl		pts	avg
		gp-gs	min	avg	fg-fga	fg%	3fg-fga	3fg%	ft-fa	ft%	off	def	tot	avg												
00	Grace Foster	6-6	189	31.5	35-70	.500	12-24	.500	29-33	.879	3	39	42	7.0	5	0	19	20	5	3	111	18.5				
01	Kennedy Chappell	6-6	87	14.5	6-17	.353	1-5	.200	9-13	.692	3	7	10	1.7	6	0	6	3	0	3	22	3.7				
02	Maci Maddox	6-0	208	34.7	31-62	.500	4-9	.444	3-4	.750	3	18	21	3.5	7	0	21	15	0	9	69	11.5				
03	Audrey Robertson	6-5	164	27.3	22-48	.458	3-10	.300	8-11	.727	6	10	16	2.7	12	0	13	13	0	6	55	9.2				
04	Kimber Mathews	1-0	11	11.0	1-2	.500	1-1	1.000	2-2	1.000	1	0	1	1.0	3	0	0	0	0	0	5	5.0				
11	Taylor Allen	3-0	25	8.3	5-8	.625	1-1	1.000	0-0	.000	2	1	3	1.0	0	0	2	1	0	2	11	3.7				
12	Taylor Thomas	6-1	88	14.7	5-16	.313	2-5	.400	9-10	.900	2	7	9	1.5	8	1	5	6	0	4	21	3.5				
15	Shaylee Stovall	6-6	151	25.2	12-29	.414	4-12	.333	13-14	.929	4	2	6	1.0	8	0	10	6	0	10	41	6.8				
23	Martie McCoy	6-6	123	20.5	6-19	.316	0-5	.000	5-7	.714	2	21	23	3.8	18	1	9	9	4	2	17	2.8				
30	Audrey Spurgin	6-0	58	9.7	6-14	.429	0-0	.000	6-12	.500	6	7	13	2.2	7	0	1	5	0	0	18	3.0				
31	Tia Johnson	3-0	18	6.0	1-2	.500	0-1	.000	0-0	.000	0	5	5	1.7	3	0	3	6	0	1	2	0.7				
33	Deja Johnson	3-0	19	6.3	3-6	.500	2-4	.500	0-0	.000	1	3	4	1.3	4	0	0	2	0	1	8	2.7				
40	Reese Schumann	6-0	59	9.8	4-10	.400	0-0	.000	4-7	.571	7	9	16	2.7	9	1	3	9	1	6	12	2.0				
Team											3	12	15				11									
Total.....		6	1200		137-303	.452	30-77	.390	88-113	.779	43	141	184	30.7	90	3	92	106	10	47	392	65.3				
Opponents.....		6	1200		118-310	.381	34-103	.330	71-100	.710	64	134	198	33.0	116	1	55	119	16	45	341	56.8				

Date	Opponent	Score
11/03/23	UNION (TN)	L 78-87
11/05/23	ADAMS ST.	w 69-65
11/17/23	SOUTHWESTERN OKLA.	w 61-54
11/18/23	KING (TN)	w 82-42
* 12/10/23	TEX. A&M INT'L	L 60-65
* 12/12/23	TEX. A&M-KINGSVILLE	w 42-28

* - Conference game

AWAY STATISTICS

#	Player	Total		3-Point			F-Throw		Rebounds				pf		dq		a		to		blk		stl		pts	avg
		gp-gs	min	avg	fg-fga	fg%	3fg-fga	3fg%	ft-fa	ft%	off	def	tot	avg												
00	Grace Foster	6-6	205	34.2	33-69	.478	7-21	.333	26-28	.929	0	37	37	6.2	15	0	16	21	2	3	99	16.5				
01	Kennedy Chappell	6-0	86	14.3	9-12	.750	4-6	.667	4-6	.667	2	14	16	2.7	5	0	2	5	1	2	26	4.3				
02	Maci Maddox	6-6	244	40.7	29-70	.414	7-20	.350	13-16	.813	4	21	25	4.2	12	0	23	15	0	12	78	13.0				
03	Audrey Robertson	6-6	196	32.7	33-62	.532	9-16	.563	11-16	.688	9	21	30	5.0	10	0	11	11	0	4	86	14.3				
11	Taylor Allen	3-0	8	2.7	0-1	.000	0-0	.000	0-0	.000	0	1	1	0.3	1	0	0	1	0	0	0	0.0				
12	Taylor Thomas	6-0	63	10.5	2-10	.200	0-3	.000	1-2	.500	2	2	4	0.7	7	0	0	6	0	2	5	0.8				
15	Shaylee Stovall	6-6	163	27.2	11-37	.297	6-21	.286	9-9	1.000	1	10	11	1.8	10	0	4	6	1	4	37	6.2				
23	Martie McCoy	6-6	102	17.0	5-14	.357	0-2	.000	5-7	.714	8	16	24	4.0	17	0	6	8	1	2	15	2.5				
30	Audrey Spurgin	6-0	80	13.3	5-14	.357	0-0	.000	5-10	.500	1	9	10	1.7	7	0	0	7	1	1	15	2.5				
31	Tia Johnson	3-0	7	2.3	0-0	.000	0-0	.000	0-0	.000	0	0	0	0.0	0	0	1	1	0	0	0	0.0				
33	Deja Johnson	2-0	2	1.0	0-0	.000	0-0	.000	0-0	.000	0	0	0	0.0	0	0	0	0	0	0	0	0.0				
40	Reese Schumann	6-0	94	15.7	11-23	.478	0-0	.000	6-8	.750	10	12	22	3.7	18	2	4	3	2	1	28	4.7				
Team											8	16	24				7									
Total.....		6	1250		138-312	.442	33-89	.371	80-102	.784	45	159	204	34.0	102	2	67	91	8	31	389	64.8				
Opponents.....		6	1250		137-350	.391	31-109	.284	47-75	.627	66	133	199	33.2	107	1	71	89	9	42	352	58.7				

Date	Opponent	Score
11/10/23	at Colo. Christian	Wot 67-62
11/25/23	at Southern Nazarene	L 64-67
* 11/30/23	at Okla. Christian	w 69-65
* 12/02/23	at Ark.-Fort Smith	w 58-49
* 01/04/24	at Cameron	w 63-48
* 01/06/24	at Midwestern St.	Wot 68-61

* - Conference game

NEUTRAL SITE STATISTICS

#	Player	Total					3-Point		F-Throw		Rebounds											
		gp-gs	min	avg	fg-fga	fg%	3fg-fga	3fg%	ft-fa	ft%	off	def	tot	avg	pf	dq	a	to	blk	stl	pts	avg
00	Grace Foster	1-1	37	37.0	5-9	.556	1-2	.500	13-13	1.000	1	7	8	8.0	0	0	3	5	1	0	24	24.0
01	Kennedy Chappell	1-0	12	12.0	1-1	.000	0-0	.000	0-0	.000	0	1	1	1.0	1	0	0	2	0	1	2	2.0
02	Maci Maddox	1-1	39	39.0	7-18	.389	2-5	.400	4-4	1.000	2	4	6	6.0	1	0	5	5	0	5	20	20.0
03	Audrey Robertson	1-1	32	32.0	4-7	.571	1-3	.333	4-6	.667	1	7	8	8.0	2	0	1	4	0	2	13	13.0
12	Taylor Thomas	1-0	8	8.0	2-2	1.000	0-0	.000	1-1	1.000	0	1	1	1.0	0	0	1	0	0	0	5	5.0
15	Shaylee Stovall	1-1	29	29.0	0-5	.000	0-4	.000	0-0	.000	0	0	0	0.0	2	0	0	1	0	3	0	0.0
23	Martie McCoy	1-1	8	8.0	0-2	.000	0-0	.000	0-0	.000	0	0	0	0.0	2	0	0	1	0	1	0	0.0
30	Audrey Spurgin	1-0	10	10.0	2-3	.667	0-0	.000	0-0	.000	0	2	2	2.0	4	0	0	0	0	0	4	4.0
31	Tia Johnson	1-0	2	2.0	0-0	.000	0-0	.000	0-0	.000	0	0	0	0.0	0	0	0	0	0	0	0	0.0
40	Reese Schumann	1-0	23	23.0	1-3	.333	0-0	.000	1-2	.500	2	1	3	3.0	4	0	1	0	0	2	3	3.0
Team											1	4	5									
Total.....		1	200		22-50	.440	4-14	.286	23-26	.885	7	27	34	34.0	16	0	11	18	1	14	71	71.0
Opponents.....		1	200		22-62	.355	2-18	.111	14-19	.737	16	22	38	38.0	21	1	15	19	5	10	60	60.0

DIVISION GAME STATISTICS

RECORD:	OVERALL	HOME	AWAY	NEUTRAL
ALL GAMES	2-0	0-0	2-0	0-0
CONFERENCE	2-0	0-0	2-0	0-0
NON-CONFERENCE	0-0	0-0	0-0	0-0

##	Player	gp-gs	min	avg	Total		3-Point		F-Throw		Rebounds				pf	dq	a	to	blk	stl	pts	avg
					fg-fga	fg%	3fg-fga	3fg%	ft-fa	ft%	off	def	tot	avg								
00	Grace Foster	2-2	80	40.0	16-31	.516	4-11	.364	3-3	1.000	0	18	18	9.0	4	0	9	7	0	0	39	19.5
01	Kennedy Chappell	2-0	28	14.0	3-4	.750	3-3	1.000	0-0	.000	1	7	8	4.0	2	0	1	2	1	0	9	4.5
02	Maci Maddox	2-2	82	41.0	8-21	.381	6-10	.600	4-6	.667	1	8	9	4.5	1	0	12	3	0	1	26	13.0
03	Audrey Robertson	2-2	68	34.0	12-25	.480	3-7	.429	1-2	.500	6	5	11	5.5	2	0	5	4	0	0	28	14.0
11	Taylor Allen	2-0	7	3.5	0-1	.000	0-0	.000	0-0	.000	0	1	1	0.5	1	0	0	1	0	0	0	0.0
12	Taylor Thomas	2-0	23	11.5	1-6	.167	0-2	.000	0-0	.000	1	0	1	0.5	1	0	0	1	0	0	2	1.0
15	Shaylee Stovall	2-2	53	26.5	2-11	.182	2-8	.250	2-2	1.000	0	5	5	2.5	3	0	2	0	1	1	8	4.0
23	Martie McCoy	2-2	19	9.5	0-3	.000	0-2	.000	1-2	.500	3	3	6	3.0	6	0	3	1	0	1	1	0.5
30	Audrey Spurgin	2-0	26	13.0	0-2	.000	0-0	.000	0-2	.000	1	5	6	3.0	3	0	0	4	0	0	0	0.0
31	Tia Johnson	2-0	3	1.5	0-0	.000	0-0	.000	0-0	.000	0	0	0	0.0	0	0	0	1	0	0	0	0.0
33	Deja Johnson	1-0	1	1.0	0-0	.000	0-0	.000	0-0	.000	0	0	0	0.0	0	0	0	0	0	0	0	0.0
40	Reese Schumann	2-0	35	17.5	9-15	.600	0-0	.000	0-0	.000	4	4	8	4.0	9	1	0	0	1	0	18	9.0
Team											1	2	3					1				
Total.....		2	425		51-119	.429	18-43	.419	11-17	.647	18	58	76	38.0	32	1	32	25	3	3	131	65.5
Opponents.....		2	425		43-125	.344	4-26	.154	19-26	.731	25	48	73	36.5	28	0	21	21	3	9	109	54.5

TEAM STATISTICS

	LCU	OPP
SCORING	131	109
Points per game	65.5	54.5
Scoring margin	+11.0	-
FIELD GOALS-ATT	51-119	43-125
Field goal pct	.429	.344
3 POINT FG-ATT	18-43	4-26
3-point FG pct	.419	.154
3-pt FG made per game	9.0	2.0
FREE THROWS-ATT	11-17	19-26
Free throw pct	.647	.731
F-Throws made per game	5.5	9.5
REBOUNDS	76	73
Rebounds per game	38.0	36.5
Rebounding margin	+1.5	-
ASSISTS	32	21
Assists per game	16.0	10.5
TURNOVERS	25	21
Turnovers per game	12.5	10.5
Turnover margin	-2.0	-
Assist/turnover ratio	1.3	1.0
STEALS	3	9
Steals per game	1.5	4.5
BLOCKS	3	3
Blocks per game	1.5	1.5
ATTENDANCE	0	622
Home games-Avg/Game	0-0	2-311
Neutral site-Avg/Game	-	0-0

Score by Periods	1st	2nd	3rd	4th	OT	Totals
Lubbock Christian	45	22	30	25	9	131
Opponents	24	32	27	24	2	109

Date	Opponent	Score	Att.
* 01/04/24	at Cameron	w 63-48	60
* 01/06/24	at Midwestern St.	Wot 68-61	562

* - Conference game

LUBBOCK CHRISTIAN UNIVERSITY WOMEN'S BASKETBALL GAME NOTES

LCU RECORD WHEN...

At home	4-2
On the road	5-1
Neutral site.....	1-0
Lone Star Conference	5-1

Monday	0-0
Tuesday.....	1-0
Wednesday	0-0
Thursday	2-0
Friday.....	2-1
Saturday.....	4-1
Sunday	1-1

Against ranked opponents.....	0-2
Top 5 opponents	0-0
Top 10 opponents	0-0

Scoring

70-plus points	2-1
60-69 points	6-2
50-59 points	1-0
49 or less points.....	1-0

Allowing

70-plus points	0-1
60-69 points	5-2
50-59 points	1-0
49 or less points.....	4-0

Shooting

50% or better	2-1
40-49%	6-2
30-39%	1-0
29.9% or less	1-2

Opponents Shooting

50% or better	0-1
40-49%	4-1
30-39%	6-1
29.9% or less	1-0

Percentages From The Field

Out-shooting the opponent	7-2
Opponents out-shoot LCU	3-1
Tied	0-0

Rebounding

Out-rebound an opponent.....	4-2
Opponent out-rebounds LCU	5-1
Tied	1-0

Turnovers

Commit 15 or less turnovers	4-1
Commit more than 15 turnovers.....	6-2
Force 15 or less turnovers.....	3-0
Force more than 15	7-3

Misc.

When Leading after the 1st Quarter.....	9-1
When Tied after the 1st Quarter.....	0-0
When Trailing after the 1st Quarter.....	1-2

When Leading at halftime	7-1
When Tied at halftime	1-0
When Trailing at halftime	2-2

When Leading after the 3rd Quarter	9-0
When Tied after the 3rd Quarter	1-0
When Trailing after the 3rd Quarter	0-3
Overtime	2-0

Lubbock Christian Team Game-by-Game Comparison (as of Jan 10, 2024)

All games

Opponent	1st	2nd	Score	Mar	Total FG	FG Pct	3-Pointers	3FG Pct	Free Throws	FT Pct	Rebounds	Assist	T/Over	Block	Steal	Fouls	
UNION (TN)	36/44	42/43	78-87	(9)	28-54/28-57	.519/.491	2-10/12-25	.200/.480	20-28/19-25	.714/.760	32/29	+3	19/14	19/19	2/2	5/6	23/29
ADAMS ST.	39/31	30/34	69-65	+4	20-48/22-51	.417/.431	7-15/8-17	.467/.471	22-23/13-14	.957/.929	22/36	(14)	12/13	12/19	2/4	9/6	14/21
Colo. Christian	32/35	25/22	67-62	+5	21-49/22-63	.429/.349	4-12/9-28	.333/.321	21-26/9-16	.808/.563	36/39	(3)	11/13	19/17	2/0	7/12	17/25
CSU Pueblo	40/27	31/33	71-60	+11	22-50/22-62	.440/.355	4-14/2-18	.286/.111	23-26/14-19	.885/.737	34/38	(4)	11/15	18/19	1/5	14/10	16/21
SOUTHWESTERN OKLA.	36/28	25/26	61-54	+7	22-44/21-55	.500/.382	4-10/7-20	.400/.350	13-14/5-7	.929/.714	31/26	+5	15/8	22/18	2/3	6/15	10/16
KING (TN)	36/23	46/19	82-42	+40	30-54/12-51	.556/.235	8-15/1-13	.533/.077	14-19/17-29	.737/.586	34/38	(4)	23/3	13/19	2/2	10/5	20/17
Southern Nazarene	24/30	40/37	64-67	(3)	26-54/28-55	.481/.509	5-12/8-20	.417/.400	7-7/3-5	1000/.600	27/30	(3)	9/12	14/20	2/1	10/7	15/11
Okla. Christian	37/26	32/39	69-65	+4	22-49/27-63	.449/.429	4-10/6-18	.400/.333	21-28/5-11	.750/.455	37/33	+4	8/18	15/11	1/4	3/6	18/24
Ark.-Fort Smith	22/24	36/25	58-49	+9	18-41/17-44	.439/.386	2-12/4-17	.167/.235	20-24/11-17	.833/.647	28/24	+4	7/7	18/20	0/1	8/8	20/19
TEX. A&M INT'L	31/25	29/40	60-65	(5)	21-49/22-56	.429/.393	5-14/4-18	.357/.222	13-20/17-25	.650/.680	30/38	(8)	14/8	24/21	2/0	8/9	19/22
TEX. A&M-KINGSVILLE	22/13	20/15	42-28	+14	16-54/13-40	.296/.325	4-13/2-10	.308/.200	6-9/0-0	.667/.000	35/31	+4	9/9	16/23	0/5	9/4	4/11
Cameron	29/29	34/19	63-48	+15	24-61/18-43	.393/.419	9-26/2-11	.346/.182	6-7/10-14	.857/.714	30/27	+3	14/9	7/15	2/0	2/2	16/15
Midwestern St.	38/27	21/32	68-61	+7	27-58/25-82	.466/.305	9-17/2-15	.529/.133	5-10/9-12	.500/.750	46/46	-	18/12	18/6	1/3	1/7	16/13

Note: Game totals are displayed in the format TEAM/OPPONENT for each category

LUBBOCK CHRISTIAN UNIVERSITY WOMEN'S BASKETBALL GAME NOTES

Lubbock Christian Points-Rebounds-Assists (as of Jan 10, 2024)

All games

Opponent	Date	Score		00	01	02	03	04	11	12
				FOSTER, GRA	CHAPPELL, K	MADDOX, MAC	ROBERTSON,	MATHEWS, KI	ALLEN, TAYL	THOMAS, TAY
UNION (TN)	11/03/23	78-87	L	16-7-4	8-2-1	16-4-4	12-3-2	DNP	DNP	9-3-1
ADAMS ST.	11/05/23	69-65	W	28-8-3	2-0-1	14-4-4	6-2-1	DNP	DNP	3-3-0
at Colo. Christian	11/10/23	67-62	W	9-6-0	10-3-1	12-6-4	16-6-3	DNP	DNP	0-0-0
vs CSU Pueblo	11/11/23	71-60	W	24-8-3	2-1-0	20-6-5	13-8-1	DNP	DNP	5-1-1
SOUTHWESTERN OKLA.	11/17/23	61-54	W	10-9-4	3-1-0	15-3-2	14-2-6	DNP	DNP	2-1-1
KING (TN)	11/18/23	82-42	W	9-5-2	4-3-1	14-3-1	8-1-3	5-1-0	9-3-2	5-0-2
at Southern Nazarene	11/25/23	64-67	L	22-2-2	2-1-0	12-4-5	4-5-1	DNP	DNP	2-0-0
at Okla. Christian	11/30/23	69-65	W	17-9-1	5-2-0	14-4-2	20-4-2	DNP	DNP	1-3-0
at Ark.-Fort Smith	12/02/23	58-49	W	12-2-4	0-2-0	14-2-0	18-4-0	DNP	0-0-0	0-0-0
TEX. A&M INT'L	12/10/23	60-65	L	27-5-3	2-1-2	4-3-7	9-4-1	DNP	2-0-0	2-2-1
TEX. A&M-KINGSVILLE	12/12/23	42-28	W	21-8-3	3-3-1	6-4-3	6-4-0	DNP	0-0-0	0-0-0
at Cameron	01/04/24	63-48	W	18-9-3	6-4-0	13-1-5	10-4-2	DNP	0-1-0	2-1-0
at Midwestern St.	01/06/24	68-61	W	21-9-6	3-4-1	13-8-7	18-7-3	DNP	0-0-0	0-0-0

Opponent	Date	Score		15	23	30	31	33	40
				STOVALL, SH	MCCOY, MART	SPURGIN, AU	JOHNSON, TI	JOHNSON, DE	SCHUMANN, R
UNION (TN)	11/03/23	78-87	L	7-2-3	4-3-4	4-4-0	DNP	DNP	2-0-0
ADAMS ST.	11/05/23	69-65	W	11-0-2	5-5-1	0-0-0	DNP	DNP	0-0-0
at Colo. Christian	11/10/23	67-62	W	8-1-1	6-5-1	6-2-0	0-0-1	DNP	0-2-0
vs CSU Pueblo	11/11/23	71-60	W	0-0-0	0-0-0	4-2-0	0-0-0	DNP	3-3-1
SOUTHWESTERN OKLA.	11/17/23	61-54	W	10-1-0	3-3-0	2-6-1	0-0-0	DNP	2-3-1
KING (TN)	11/18/23	82-42	W	3-1-4	4-3-4	8-3-0	2-5-3	8-2-0	3-3-1
at Southern Nazarene	11/25/23	64-67	L	14-2-0	4-5-0	2-2-0	DNP	DNP	2-2-1
at Okla. Christian	11/30/23	69-65	W	3-2-1	2-3-1	2-0-0	DNP	DNP	5-3-1
at Ark.-Fort Smith	12/02/23	58-49	W	4-1-0	2-5-1	5-0-0	DNP	0-0-0	3-7-2
TEX. A&M INT'L	12/10/23	60-65	L	6-1-0	1-3-0	4-0-0	DNP	0-1-0	3-5-0
TEX. A&M-KINGSVILLE	12/12/23	42-28	W	4-1-1	0-6-0	0-0-0	0-0-0	0-1-0	2-5-1
at Cameron	01/04/24	63-48	W	5-1-1	1-6-3	0-0-0	0-0-0	0-0-0	8-3-0
at Midwestern St.	01/06/24	68-61	W	3-4-1	0-0-0	0-6-0	0-0-0	DNP	10-5-0

LCU - TEAM GAME HIGHS

POINTS	82	KING (TN) (11/18/23)
	78	UNION (TN) (11/03/23)
	71	vs CSU Pueblo (11/11/23)
	69	at Okla. Christian (11/30/23)
	69	ADAMS ST. (11/05/23)
FIELD GOALS MADE	30	KING (TN) (11/18/23)
	28	UNION (TN) (11/03/23)
FIELD GOAL ATTEMPTS	61	at Cameron (01/04/24)
	58	at Midwestern St. (01/06/24)
FIELD GOAL PERCENTAGE	.556 (30-54)	KING (TN) (11/18/23)
	.519 (28-54)	UNION (TN) (11/03/23)
3 PT FIELD GOALS MADE	9	at Midwestern St. (01/06/24)
	9	at Cameron (01/04/24)
3 PT FG ATTEMPTS	26	at Cameron (01/04/24)
	17	at Midwestern St. (01/06/24)
3 PT FG PERCENTAGE	.533 (8-15)	KING (TN) (11/18/23)
	.529 (9-17)	at Midwestern St. (01/06/24)
FREE THROWS MADE	23	vs CSU Pueblo (11/11/23)
	22	ADAMS ST. (11/05/23)
FREE THROW ATTEMPTS	28	at Okla. Christian (11/30/23)
	28	UNION (TN) (11/03/23)
FREE THROW PERCENTAGE	1.000 (7-7)	at Southern Nazarene (11/25/23)
	.957 (22-23)	ADAMS ST. (11/05/23)
REBOUNDS	46	at Midwestern St. (01/06/24)
	37	at Okla. Christian (11/30/23)
ASSISTS	23	KING (TN) (11/18/23)
	19	UNION (TN) (11/03/23)
STEALS	14	vs CSU Pueblo (11/11/23)
	10	at Southern Nazarene (11/25/23)
	10	KING (TN) (11/18/23)
BLOCKED SHOTS	2	at Cameron (01/04/24)
	2	TEX. A&M INT'L (12/10/23)
	2	at Southern Nazarene (11/25/23)
	2	KING (TN) (11/18/23)
	2	SOUTHWESTERN OKLA. (11/17/23)
	2	at Colo. Christian (11/10/23)
	2	ADAMS ST. (11/05/23)
	2	UNION (TN) (11/03/23)
TURNOVERS	24	TEX. A&M INT'L (12/10/23)
	22	SOUTHWESTERN OKLA. (11/17/23)
FOULS	23	UNION (TN) (11/03/23)
	20	at Ark.-Fort Smith (12/02/23)
	20	KING (TN) (11/18/23)

LCU - TEAM GAME LOWS

POINTS	42	TEX. A&M-KINGSVILLE (12/12/23)
	58	at Ark.-Fort Smith (12/02/23)
	60	TEX. A&M INT'L (12/10/23)
	61	SOUTHWESTERN OKLA. (11/17/23)
	63	at Cameron (01/04/24)
FIELD GOALS MADE	16	TEX. A&M-KINGSVILLE (12/12/23)
	18	at Ark.-Fort Smith (12/02/23)
FIELD GOAL ATTEMPTS	41	at Ark.-Fort Smith (12/02/23)
	44	SOUTHWESTERN OKLA. (11/17/23)
FIELD GOAL PERCENTAGE	.296 (16-54)	TEX. A&M-KINGSVILLE (12/12/23)
	.393 (24-61)	at Cameron (01/04/24)
3 PT FIELD GOALS MADE	2	UNION (TN) (11/03/23)
	2	at Ark.-Fort Smith (12/02/23)
3 PT FG ATTEMPTS	10	UNION (TN) (11/03/23)
	10	SOUTHWESTERN OKLA. (11/17/23)
	10	at Okla. Christian (11/30/23)
3 PT FG PERCENTAGE	.167 (2-12)	at Ark.-Fort Smith (12/02/23)
	.200 (2-10)	UNION (TN) (11/03/23)
FREE THROWS MADE	5	at Midwestern St. (01/06/24)
	6	TEX. A&M-KINGSVILLE (12/12/23)
	6	at Cameron (01/04/24)
FREE THROW ATTEMPTS	7	at Southern Nazarene (11/25/23)
	7	at Cameron (01/04/24)
FREE THROW PERCENTAGE	.500 (5-10)	at Midwestern St. (01/06/24)
	.650 (13-20)	TEX. A&M INT'L (12/10/23)
REBOUNDS	22	ADAMS ST. (11/05/23)
	27	at Southern Nazarene (11/25/23)
ASSISTS	7	at Ark.-Fort Smith (12/02/23)
	8	at Okla. Christian (11/30/23)
STEALS	1	at Midwestern St. (01/06/24)
	2	at Cameron (01/04/24)
BLOCKED SHOTS	0	at Ark.-Fort Smith (12/02/23)
	0	TEX. A&M-KINGSVILLE (12/12/23)
TURNOVERS	7	at Cameron (01/04/24)
	12	ADAMS ST. (11/05/23)
FOULS	4	TEX. A&M-KINGSVILLE (12/12/23)
	10	SOUTHWESTERN OKLA. (11/17/23)

LCU OPPONENT - TEAM GAME HIGHS

POINTS	87	UNION (TN) (11/03/23)
	67	at Southern Nazarene (11/25/23)
	65	TEX. A&M INT'L (12/10/23)
	65	at Okla. Christian (11/30/23)
	65	ADAMS ST. (11/05/23)
FIELD GOALS MADE	28	at Southern Nazarene (11/25/23)
	28	UNION (TN) (11/03/23)
FIELD GOAL ATTEMPTS	82	at Midwestern St. (01/06/24)
	63	at Okla. Christian (11/30/23)
	63	at Colo. Christian (11/10/23)
FIELD GOAL PERCENTAGE	.509 (28-55)	at Southern Nazarene (11/25/23)
	.491 (28-57)	UNION (TN) (11/03/23)
3 PT FIELD GOALS MADE	12	UNION (TN) (11/03/23)
	9	at Colo. Christian (11/10/23)
3 PT FG ATTEMPTS	28	at Colo. Christian (11/10/23)
	25	UNION (TN) (11/03/23)
3 PT FG PERCENTAGE	.480 (12-25)	UNION (TN) (11/03/23)
	.471 (8-17)	ADAMS ST. (11/05/23)
FREE THROWS MADE	19	UNION (TN) (11/03/23)
	17	TEX. A&M INT'L (12/10/23)
	17	KING (TN) (11/18/23)
FREE THROW ATTEMPTS	29	KING (TN) (11/18/23)
	25	TEX. A&M INT'L (12/10/23)
	25	UNION (TN) (11/03/23)
FREE THROW PERCENTAGE	.929 (13-14)	ADAMS ST. (11/05/23)
	.760 (19-25)	UNION (TN) (11/03/23)
REBOUNDS	46	at Midwestern St. (01/06/24)
	39	at Colo. Christian (11/10/23)
ASSISTS	18	at Okla. Christian (11/30/23)
	15	vs CSU Pueblo (11/11/23)
STEALS	15	SOUTHWESTERN OKLA. (11/17/23)
	12	at Colo. Christian (11/10/23)
BLOCKED SHOTS	5	TEX. A&M-KINGSVILLE (12/12/23)
	5	vs CSU Pueblo (11/11/23)
TURNOVERS	23	TEX. A&M-KINGSVILLE (12/12/23)
	21	TEX. A&M INT'L (12/10/23)
FOULS	29	UNION (TN) (11/03/23)
	25	at Colo. Christian (11/10/23)

LCU OPPONENT - TEAM GAME LOWS

POINTS	28	TEX. A&M-KINGSVILLE (12/12/23)
	42	KING (TN) (11/18/23)
	48	at Cameron (01/04/24)
	49	at Ark.-Fort Smith (12/02/23)
	54	SOUTHWESTERN OKLA. (11/17/23)
FIELD GOALS MADE	12	KING (TN) (11/18/23)
	13	TEX. A&M-KINGSVILLE (12/12/23)
FIELD GOAL ATTEMPTS	40	TEX. A&M-KINGSVILLE (12/12/23)
	43	at Cameron (01/04/24)
FIELD GOAL PERCENTAGE	.235 (12-51)	KING (TN) (11/18/23)
	.305 (25-82)	at Midwestern St. (01/06/24)
3 PT FIELD GOALS MADE	1	KING (TN) (11/18/23)
	2	vs CSU Pueblo (11/11/23)
	2	TEX. A&M-KINGSVILLE (12/12/23)
	2	at Cameron (01/04/24)
	2	at Midwestern St. (01/06/24)
3 PT FG ATTEMPTS	10	TEX. A&M-KINGSVILLE (12/12/23)
	11	at Cameron (01/04/24)
3 PT FG PERCENTAGE	.077 (1-13)	KING (TN) (11/18/23)
	.111 (2-18)	vs CSU Pueblo (11/11/23)
FREE THROWS MADE	0	TEX. A&M-KINGSVILLE (12/12/23)
	3	at Southern Nazarene (11/25/23)
FREE THROW ATTEMPTS	0	TEX. A&M-KINGSVILLE (12/12/23)
	5	at Southern Nazarene (11/25/23)
FREE THROW PERCENTAGE	.000 (0-0)	TEX. A&M-KINGSVILLE (12/12/23)
	.455 (5-11)	at Okla. Christian (11/30/23)
REBOUNDS	24	at Ark.-Fort Smith (12/02/23)
	26	SOUTHWESTERN OKLA. (11/17/23)
ASSISTS	3	KING (TN) (11/18/23)
	7	at Ark.-Fort Smith (12/02/23)
STEALS	2	at Cameron (01/04/24)
	4	TEX. A&M-KINGSVILLE (12/12/23)
BLOCKED SHOTS	0	at Colo. Christian (11/10/23)
	0	TEX. A&M INT'L (12/10/23)
	0	at Cameron (01/04/24)
TURNOVERS	6	at Midwestern St. (01/06/24)
	11	at Okla. Christian (11/30/23)
FOULS	11	at Southern Nazarene (11/25/23)
	11	TEX. A&M-KINGSVILLE (12/12/23)

LUBBOCK CHRISTIAN UNIVERSITY WOMEN'S BASKETBALL GAME NOTES

Lubbock Christian Overall/Conference Statistics (as of Jan 10, 2024)

All games

SUMMARY	Overall Statistics										Conference Statistics									
	gp-gs	min/g	fg%	3fg%	ft%	r/g	a/g	stl	blk	pts/g	gp-gs	min/g	fg%	3fg%	ft%	r/g	a/g	stl	blk	pts/g
Grace Foster	13-13	33.2	.493	.426	.919	6.7	2.9	6	8	18.0	6-6	35.0	.506	.429	.929	7.0	3.3	4	2	19.3
Kennedy Chappell	13-0	14.2	.533	.455	.684	2.1	0.6	6	1	3.8	6-0	13.2	.600	1.000	.500	2.7	0.7	0	1	3.2
Maci Maddox	13-13	37.8	.447	.382	.833	4.0	3.8	26	0	12.8	6-6	38.2	.393	.389	.750	3.7	4.0	8	0	10.7
Audrey Robertson	13-12	30.2	.504	.448	.697	4.2	1.9	12	0	11.8	6-6	30.5	.500	.467	.632	4.5	1.3	3	0	13.5
Kimber Mathews	1-0	11.0	.500	1.000	1.000	1.0	0.0	0	0	5.0										
Taylor Allen	6-0	5.5	.556	1.000	.000	0.7	0.3	2	0	1.8	5-0	4.0	.500	.000	.000	0.2	0.0	1	0	0.4
Taylor Thomas	13-1	12.2	.321	.250	.846	1.1	0.5	6	0	2.4	6-0	11.3	.083	.000	.750	1.0	0.2	1	0	0.8
Shaylee Stovall	13-13	26.4	.324	.270	.957	1.3	1.1	17	1	6.0	6-6	27.8	.237	.111	1.000	1.7	0.7	7	1	4.2
Martie McCoy	13-13	17.9	.314	.000	.714	3.6	1.2	5	5	2.5	6-6	15.7	.077	.000	.571	3.8	0.8	2	1	1.0
Audrey Spurgin	13-0	11.4	.419	.000	.500	1.9	0.1	1	1	2.8	6-0	11.0	.333	.000	.375	1.0	0.0	0	0	1.8
Tia Johnson	7-0	3.9	.500	.000	.000	0.7	0.6	1	0	0.3	3-0	2.0	.000	.000	.000	0.0	0.0	1	0	0.0
Deja Johnson	5-0	4.2	.500	.500	.000	0.8	0.0	1	0	1.6	4-0	1.5	.000	.000	.000	0.5	0.0	0	0	0.0
Reese Schumann	13-0	13.5	.444	.000	.647	3.2	0.6	9	3	3.3	6-0	16.2	.500	.000	.636	4.7	0.7	4	1	5.2
Totals	13		.447	.372	.793	32.5	13.1	92	19	65.5	6		.410	.359	.724	34.3	11.7	31	6	60.0
Opponent	13		.384	.291	.680	33.5	10.8	97	30	57.9	6		.372	.225	.658	33.2	10.5	36	13	52.7

SCORING	Overall Statistics										Conference Statistics									
	fg-fga	fg%	3fg-fga	3fg%	ft-fa	ft%	pts	pts/g			fg-fga	fg%	3fg-fga	3fg%	ft-fa	ft%	pts	pts/g		
Grace Foster	73-148	.493	20-47	.426	68-74	.919	234	18.0			39-77	.506	12-28	.429	26-28	.929	116	19.3		
Kennedy Chappell	16-30	.533	5-11	.455	13-19	.684	50	3.8			6-10	.600	5-5	1.000	2-4	.500	19	3.2		
Maci Maddox	67-150	.447	13-34	.382	20-24	.833	167	12.8			24-61	.393	7-18	.389	9-12	.750	64	10.7		
Audrey Robertson	59-117	.504	13-29	.448	23-33	.697	154	11.8			31-62	.500	7-15	.467	12-19	.632	81	13.5		
Kimber Mathews	1-2	.500	1-1	1.000	2-2	1.000	5	5.0												
Taylor Allen	5-9	.556	1-1	1.000	0-0	.000	11	1.8			1-2	.500	0-0	.000	0-0	.000	2	0.4		
Taylor Thomas	9-28	.321	2-8	.250	11-13	.846	31	2.4			1-12	.083	0-4	.000	3-4	.750	5	0.8		
Shaylee Stovall	23-71	.324	10-37	.270	22-23	.957	78	6.0			9-38	.237	2-18	.111	5-5	1.000	25	4.2		
Martie McCoy	11-35	.314	0-7	.000	10-14	.714	32	2.5			1-13	.077	0-4	.000	4-7	.571	6	1.0		
Audrey Spurgin	13-31	.419	0-0	.000	11-22	.500	37	2.8			4-12	.333	0-0	.000	3-8	.375	11	1.8		
Tia Johnson	1-2	.500	0-1	.000	0-0	.000	2	0.3			0-0	.000	0-0	.000	0-0	.000	0	0.0		
Deja Johnson	3-6	.500	2-4	.500	0-0	.000	8	1.6			0-1	.000	0-0	.000	0-0	.000	0	0.0		
Reese Schumann	16-36	.444	0-0	.000	11-17	.647	43	3.3			12-24	.500	0-0	.000	7-11	.636	31	5.2		
Totals	297-665	.447	67-180	.372	191-241	.793	852	65.5			128-312	.410	33-92	.359	71-98	.724	360	60.0		
Opponent	277-722	.384	67-230	.291	132-194	.680	753	57.9			122-328	.372	20-89	.225	52-79	.658	316	52.7		

TOTALS	Overall Statistics										Conference Statistics									
	o-reb	d-reb	total	pf	fo	a	to	a/to	hi pts		o-reb	d-reb	total	pf	fo	a	to	a/to	hi pts	
Grace Foster	4	83	87	20	0	38	46	0.8	28		2	40	42	7	0	20	15	1.3	27	
Kennedy Chappell	5	22	27	12	0	8	10	0.8	10		2	14	16	4	0	4	6	0.7	6	
Maci Maddox	9	43	52	20	0	49	35	1.4	20		4	18	22	7	0	24	17	1.4	14	
Audrey Robertson	16	38	54	24	0	25	28	0.9	20		13	14	27	13	0	8	12	0.7	20	
Kimber Mathews	1	0	1	3	0	0	0	0.0	5											
Taylor Allen	2	2	4	1	0	2	2	1.0	9		0	1	1	1	0	0	2	0.0	2	
Taylor Thomas	4	10	14	15	1	6	12	0.5	9		2	4	6	5	0	1	5	0.2	2	
Shaylee Stovall	5	12	17	20	0	14	13	1.1	14		3	7	10	11	0	4	8	0.5	6	
Martie McCoy	10	37	47	37	1	15	18	0.8	6		7	16	23	17	1	5	7	0.7	2	
Audrey Spurgin	7	18	25	18	0	1	12	0.1	8		1	5	6	5	0	0	6	0.0	5	
Tia Johnson	0	5	5	3	0	4	7	0.6	2		0	0	0	0	0	0	2	0.0	0	
Deja Johnson	1	3	4	4	0	2	0.0	0.8	8		1	1	2	1	0	0	1	0.0	0	
Reese Schumann	19	22	41	31	3	8	12	0.7	10		12	16	28	22	3	4	8	0.5	10	
Totals	95	327	422	208	5	170	215	0.8	82		55	151	206	93	4	70	98	0.7	69	
Opponent	146	289	435	244	3	141	227	0.6	87		63	136	199	104	2	63	96	0.7	65	

Lubbock Christian Season/Career Statistics (as of Jan 10, 2024)

All games

SEASON STATISTICS

CAREER STATISTICS

SUMMARY	gp-gs	min/g	fg%	3fg%	ft%	r/g	a/g	stl	blk	pts/g	gp-gs	min/g	fg%	3fg%	ft%	r/g	a/g	stl	blk	pts/g	
Grace Foster	13-13	33.2	.493	.426	.919	6.7	2.9	6	8	18.0	83-48	25.5	.477	.367	.895	6.2	1.6	39	62	12.9	
Kennedy Chappell	13-0	14.2	.533	.455	.684	2.1	0.6	6	1	3.8	13-0	14.2	.533	.455	.684	2.1	0.6	6	1	3.8	
Maci Maddox	13-13	37.8	.447	.382	.833	4.0	3.8	26	0	12.8	94-48	23.8	.433	.377	.814	2.1	2.4	120	5	6.9	
Audrey Robertson	13-12	30.2	.504	.448	.697	4.2	1.9	12	0	11.8	103-50	22.0	.436	.302	.768	2.8	1.7	90	13	6.8	
Kimber Mathews	1-0	11.0	.500	1.000	1.000	1.0	0.0	0	0	5.0	1-0	11.0	.500	1.000	1.000	1.0	0.0	0	0	5.0	
Taylor Allen	6-0	5.5	.556	1.000	.000	0.7	0.3	2	0	1.8	6-0	5.5	.556	1.000	.000	0.7	0.3	2	0	1.8	
Taylor Thomas	13-1	12.2	.321	.250	.846	1.1	0.5	6	0	2.4	38-1	9.9	.400	.158	.889	0.9	0.4	16	3	2.4	
Shaylee Stovall	13-13	26.4	.324	.270	.957	1.3	1.1	17	1	6.0	91-49	17.1	.380	.382	.833	1.0	0.7	46	1	4.3	
Martie McCoy	13-13	17.9	.314	.000	.714	3.6	1.2	5	5	2.5	48-31	16.5	.362	.243	.774	2.8	0.9	18	11	3.2	
Audrey Spurgin	13-0	11.4	.419	.000	.500	1.9	0.1	1	1	2.8	56-0	7.6	.376	.000	.619	1.5	0.1	5	5	2.4	
Tia Johnson	7-0	3.9	.500	.000	.000	0.7	0.6	1	0	0.3	18-0	4.4	.320	.182	1.000	0.9	0.4	6	0	1.2	
Deja Johnson	5-0	4.2	.500	.500	.000	0.8	0.0	1	0	1.6	16-0	5.1	.471	.333	.875	1.0	0.4	4	0	1.6	
Reese Schumann	13-0	13.5	.444	.000	.647	3.2	0.6	9	3	3.3	60-1	13.3	.500	.000	.576	3.8	0.4	25	44	3.8	
SCORING	fg-fga	fg%	3fg-fga	3fg%	ft-fa	ft%	pts	pts/g			fg-fga	fg%	3fg-fga	3fg%	ft-fa	ft%	pts	pts/g			
Grace Foster	73-148	.493	20-47	.426	68-74	.919	234	18.0			357-748	.477	90-245	.367	264-295	.895	1068	12.9			
Kennedy Chappell	16-30	.533	5-11	.455	13-19	.684	50	3.8			16-30	.533	5-11	.455	13-19	.684	50	3.8			
Maci Maddox	67-150	.447	13-34	.382	20-24	.833	167	12.8			254-587	.433	57-151	.377	83-102	.814	648	6.9			
Audrey Robertson	59-117	.504	13-29	.448	23-33	.697	154	11.8			243-557	.436	49-162	.302	169-220	.768	704	6.8			
Kimber Mathews	1-2	.500	1-1	1.000	2-2	1.000	5	5.0			1-2	.500	1-1	1.000	2-2	1.000	5	5.0			
Taylor Allen	5-9	.556	1-1	1.000	0-0	.000	11	1.8			5-9	.556	1-1	1.000	0-0	.000	11	1.8			
Taylor Thomas	9-28	.321	2-8	.250	11-13	.846	31	2.4			28-70	.400	3-19	.158	32-36	.889	91	2.4			
Shaylee Stovall	23-71	.324	10-37	.270	22-23	.957	78	6.0			114-300	.380	68-178	.382	95-114	.833	391	4.3			
Martie McCoy	11-35	.314	0-7	.000	10-14	.714	32	2.5			51-141	.362	9-37	.243	41-53	.774	152	3.2			
Audrey Spurgin	13-31	.419	0-0	.000	11-22	.500	37	2.8			41-109	.376	0-1	.000	52-84	.619	134	2.4			
Tia Johnson	1-2	.500	0-1	.000	0-0	.000	2	0.3			8-25	.320	2-11	.182	.33	3	1.000	21	1.2		
Deja Johnson	3-6	.500	2-4	.500	0-0	.000	8	1.6			8-17	.471	3-9	.333	7-8	.875	26	1.6			
Reese Schumann	16-36	.444	0-0	.000	11-17	.647	43	3.3			86-172	.500	0-0	.000	53-92	.576	225	3.8			
TOTALS	o-reb	d-reb	t-reb	pf	fo	ast	to	alto			o-reb	d-reb	t-reb	pf	fo	ast	to	alto			
Grace Foster	4	83	87	20	0	38	46	0.8			81	431	512	148	2	129	174	0.7			
Kennedy Chappell	5	22	27	12	0	8	10	0.8			5	22	27	12	0	8	10	0.8			
Maci Maddox	9	43	52	20	0	49	35	1.4			28	170	198	71	0	224	152	1.5			
Audrey Robertson	16	38	54	24	0	25	28	0.9			93	195	288	154	2	174	144	1.2			
Kimber Mathews	1	0	1	3	0	0	0	0.0			1	0	1	3	0	0	0	0.0			
Taylor Allen	2	2	4	1	0	2	2	1.0			2	2	4	1	0	2	2	1.0			
Taylor Thomas	4	10	14	15	1	6	12	0.5			5	30	35	41	1	14	34	0.4			
Shaylee Stovall	5	12	17	20	0	14	13	1.1			17	71	88	92	0	65	60	1.1			
Martie McCoy	10	37	47	37	1	15	18	0.8			27	105	132	114	4	41	45	0.9			
Audrey Spurgin	7	18	25	18	0	1	12	0.1			25	57	82	71	0	5	36	0.1			
Tia Johnson	0	5	5	3	0	4	7	0.6			2	15	17	13	0	7	10	0.7			
Deja Johnson	1	3	4	4	0	0	2	0.0			5	11	16	7	0	6	4	1.5			
Reese Schumann	19	22	41	31	3	8	12	0.7			80	149	229	127	5	22	69	0.7			

LCU - INDIVIDUAL GAME HIGHS

Points	28	Grace Foster vs Adams St. (11/05/23)
	27	Grace Foster vs Tex. A&M Int'l (12/10/23)
	24	Grace Foster vs CSU Pueblo (11/11/23)
	22	Grace Foster at Southern Nazarene (11/25/23)
	21	Grace Foster at Midwestern St. (01/06/24)
	21	Grace Foster vs Tex. A&M-Kingsville (12/12/23)
Field Goals Made	8	Grace Foster at Midwestern St. (01/06/24)
	8	Audrey Robertson at Midwestern St. (01/06/24)
	8	Grace Foster at Cameron (01/04/24)
	8	Grace Foster vs Tex. A&M Int'l (12/10/23)
	8	Audrey Robertson at Okla. Christian (11/30/23)
	8	Grace Foster at Southern Nazarene (11/25/23)
	8	Maci Maddox vs Union (TN) (11/03/23)
Field Goal Att.	18	Maci Maddox vs CSU Pueblo (11/11/23)
	17	Grace Foster at Cameron (01/04/24)
FG Pct (min 5 made)	.750 (6-8)	Maci Maddox vs King (TN) (11/18/23)
	.750 (6-8)	Audrey Robertson vs Southwestern Okla. (11/17/23)
3-Point FG Made	5	Grace Foster vs Tex. A&M Int'l (12/10/23)
	3	Maci Maddox at Midwestern St. (01/06/24)
	3	Grace Foster at Midwestern St. (01/06/24)
	3	Maci Maddox at Cameron (01/04/24)
	3	Grace Foster vs Tex. A&M-Kingsville (12/12/23)
	3	Grace Foster at Southern Nazarene (11/25/23)
	3	Grace Foster vs Adams St. (11/05/23)
3-Point FG Att.	7	Grace Foster vs Tex. A&M Int'l (12/10/23)
	6	Grace Foster at Midwestern St. (01/06/24)
	6	Maci Maddox at Cameron (01/04/24)
	6	Shaylee Stovall at Cameron (01/04/24)
	6	Grace Foster vs Tex. A&M-Kingsville (12/12/23)
	6	Grace Foster vs Adams St. (11/05/23)
3-Pt FG Pct (min 2 made)	1.000 (2-2)	Kennedy Chappell at Cameron (01/04/24)
	1.000 (2-2)	Audrey Robertson at Okla. Christian (11/30/23)
	1.000 (2-2)	Audrey Robertson at Colo. Christian (11/10/23)
Free Throws Made	13	Grace Foster vs CSU Pueblo (11/11/23)
	13	Grace Foster vs Adams St. (11/05/23)
Free Throw Att.	13	Grace Foster vs CSU Pueblo (11/11/23)
	13	Grace Foster vs Adams St. (11/05/23)
FT Pct (min 3 made)	1.000 (13-13)	Grace Foster vs CSU Pueblo (11/11/23)
	1.000 (13-13)	Grace Foster vs Adams St. (11/05/23)
	1.000 (8-8)	Shaylee Stovall vs Adams St. (11/05/23)
	1.000 (4-4)	Grace Foster vs Tex. A&M-Kingsville (12/12/23)
	1.000 (4-4)	Grace Foster at Ark.-Fort Smith (12/02/23)
	1.000 (4-4)	Shaylee Stovall at Southern Nazarene (11/25/23)
	1.000 (4-4)	Grace Foster vs Southwestern Okla. (11/17/23)
	1.000 (4-4)	Maci Maddox vs CSU Pueblo (11/11/23)
	1.000 (4-4)	Maci Maddox at Colo. Christian (11/10/23)
	1.000 (3-3)	Grace Foster at Southern Nazarene (11/25/23)
Rebounds	9	Grace Foster at Midwestern St. (01/06/24)
	9	Grace Foster at Cameron (01/04/24)
	9	Grace Foster at Okla. Christian (11/30/23)
	9	Grace Foster vs Southwestern Okla. (11/17/23)
Assists	7	Maci Maddox at Midwestern St. (01/06/24)
	7	Maci Maddox vs Tex. A&M Int'l (12/10/23)
	5	Maci Maddox at Ark.-Fort Smith (12/02/23)
Steals	5	Maci Maddox vs CSU Pueblo (11/11/23)
	5	Grace Foster vs Tex. A&M Int'l (12/10/23)
Blocked Shots	2	Grace Foster vs Southern Nazarene (11/25/23)
	2	Grace Foster vs Union (TN) (11/03/23)
Turnovers	8	Grace Foster vs Union (TN) (11/03/23)
	7	Grace Foster at Colo. Christian (11/10/23)
Fouls	5	Reese Schumann at Midwestern St. (01/06/24)
	5	Martie McCoy vs Tex. A&M Int'l (12/10/23)
	5	Reese Schumann vs Tex. A&M Int'l (12/10/23)
	5	Reese Schumann at Okla. Christian (11/30/23)
	5	Taylor Thomas vs Union (TN) (11/03/23)
Minutes	45	Maci Maddox at Colo. Christian (11/10/23)
	44	Maci Maddox at Midwestern St. (01/06/24)
	43	Grace Foster at Midwestern St. (01/06/24)
	40	Maci Maddox at Ark.-Fort Smith (12/02/23)
	40	Maci Maddox at Southern Nazarene (11/25/23)

OPPONENT - INDIVIDUAL GAME HIGHS

Points	24	Kertisa Amos at Midwestern St. (01/06/24)
	24	Leilani Love vs CSU Pueblo (11/11/23)
	23	Zarria Carter at Midwestern St. (01/06/24)
	21	Laurny Reither at Southern Nazarene (11/25/23)
	19	Nicole Bowlin at Colo. Christian (11/10/23)
	19	Macey Lee vs Union (TN) (11/03/23)
Field Goals Made	11	Zarria Carter at Midwestern St. (01/06/24)
	10	Kertisa Amos at Midwestern St. (01/06/24)
Field Goal Att.	28	Zarria Carter at Midwestern St. (01/06/24)
	24	Kertisa Amos at Midwestern St. (01/06/24)
FG Pct (min 5 made)	1.000 (7-7)	Shamica Smith at Cameron (01/04/24)
	.800 (8-10)	Leilani Love vs CSU Pueblo (11/11/23)
	.800 (8-10)	Macey Lee vs Union (TN) (11/03/23)
3-Point FG Made	5	Lauren West vs Union (TN) (11/03/23)
	3	Laurny Reither at Southern Nazarene (11/25/23)
	3	Nicole Bowlin at Colo. Christian (11/10/23)
	3	Harmanie Dominguez vs Adams St. (11/05/23)
	3	Leah Cauble vs Union (TN) (11/03/23)
	3	Macey Lee vs Union (TN) (11/03/23)
3-Point FG Att.	11	Maggie Phipps at Colo. Christian (11/10/23)
	9	Averi Zinn vs Southwestern Okla. (11/17/23)
	9	Lauren West vs Union (TN) (11/03/23)
3-Pt FG Pct (min 2 made)	1.000 (2-2)	Ngozi Obineke vs Tex. A&M Int'l (12/10/23)
	.750 (3-4)	Laurny Reither at Southern Nazarene (11/25/23)
	.750 (3-4)	Harmanie Dominguez vs Adams St. (11/05/23)
	.750 (3-4)	Macey Lee vs Union (TN) (11/03/23)
Free Throws Made	9	Shanique Lucas vs Union (TN) (11/03/23)
	8	Leilani Love vs CSU Pueblo (11/11/23)
Free Throw Att.	10	Leilani Love vs CSU Pueblo (11/11/23)
	10	Shanique Lucas vs Union (TN) (11/03/23)
FT Pct (min 3 made)	1.000 (6-6)	Brianna Dunbar vs King (TN) (11/18/23)
	1.000 (4-4)	Malea Jackson vs Tex. A&M Int'l (12/10/23)
	1.000 (4-4)	Elaina Watson vs Adams St. (11/05/23)
	1.000 (3-3)	Emily Monaghan at Southern Nazarene (11/25/23)
Rebounds	14	Zarria Carter at Midwestern St. (01/06/24)
	13	Ngozi Obineke vs Tex. A&M Int'l (12/10/23)
Assists	8	Tomia Johnson vs CSU Pueblo (11/11/23)
	6	Laurny Reither at Southern Nazarene (11/25/23)
Steals	5	Hannah Boyett at Ark.-Fort Smith (12/02/23)
	4	Laurny Reither at Southern Nazarene (11/25/23)
Blocked Shots	3	Alisha Little vs CSU Pueblo (11/11/23)
	2	Nikki Green at Midwestern St. (01/06/24)
	2	Devon Williams vs Tex. A&M-Kingsville (12/12/23)
	2	Asiyha Smith at Okla. Christian (11/30/23)
	2	Christabel Longe vs Adams St. (11/05/23)
Turnovers	6	Shamica Smith at Cameron (01/04/24)
	6	Autumn Watts vs CSU Pueblo (11/11/23)
Fouls	5	Raiana Brown vs Tex. A&M Int'l (12/10/23)

DOUBLE-DOUBLES

Opponent	T/O	2ndCh	Paint	FastB	Bench	Ties	Leads	WL	Score	Leads overcome
Union (TN)	20	9	48	6	26	0	0	L	78-87	lost 4 1st-08:57
Adams St.	20	0	16	8	5	1	4	W	69-65	trailed by 6 1st-07:26
Colo. Christian	18	5	28	5	16	3	2	W	67-62	trailed by 8 1st-02:48
CSU Pueblo	18	8	30	9	14	0	0	W	71-60	
Southwestern Okla.	18	6	30	2	9	0	0	W	61-54	
King (TN)	27	9	36	10	44	0	2	W	82-42	trailed by 2 1st-08:45
Southern Nazarene	18	3	26	3	8	1	0	L	64-67	
Okla. Christian	14	10	32	5	13	2	2	W	69-65	trailed by 4 1st-09:03
Ark.-Fort Smith	16	4	32	1	8	4	6	W	58-49	trailed by 2 1st-09:18
Tex. A&M Int'l	20	5	30	4	13	1	0	L	60-65	lost 15 2nd-04:02
Tex. A&M-Kingsville	22	7	18	7	5	0	0	W	42-28	
Cameron	23	7	20	3	16	2	3	W	63-48	trailed by 4 2nd-03:52
Midwestern St.	6	4	30	10	13	1	3	W	68-61	trailed by 2 1st-08:30
Totals	240	77	376	73	190	15	22			
Average/Game	18.5	5.9	28.9	5.6	14.6	1.2	1.7			
Opponent	193	124	332	48	233	22	19			
Average/Game	14.8	9.5	25.5	3.7	17.9	1.7	1.5			

GAME BY GAME SPECIALTY STATS

CAREER STATISTICS

ALLEN, Taylor

				Field Goals		3-Point		F-Throws		Rebounds										Scoring	
SEASON	TEAM	GP-GS	MIN/AVG	FG-FGA	FG%	3FG-3FGA	3FG%	FT-FTA	FT%	OFF	DEF	TOT	AVG	PF-FO	A	TO	BLK	STL		PTS	AVG
2023-24	LCU	6-0	33/5.4	5-9	.556	1-1	1.000	0-0	.000	2	2	4	0.7	1-0	2	2	0	2		11	1.8
TOTAL		6-0	33/5.4	5-9	.556	1-1	1.000	0-0	.000	2	2	4	0.7	1-0	2	2	0	2		11	1.8

Single Game Highs

Statistic	Value	
Points	9	vs King (TN) 11/18/23
Rebounds	3	vs King (TN) 11/18/23
Assists	2	vs King (TN) 11/18/23
Steals	1	vs King (TN) 11/18/23, vs Tex. A&M Int'l 12/10/23
FG Made	4	vs King (TN) 11/18/23
FG Attempts	7	vs King (TN) 11/18/23
3FG Made	1	vs King (TN) 11/18/23
3FG Attempts	1	vs King (TN) 11/18/23

CHAPPELL, Kennedy

				Field Goals		3-Point		F-Throws		Rebounds										Scoring	
SEASON	TEAM	GP-GS	MIN/AVG	FG-FGA	FG%	3FG-3FGA	3FG%	FT-FTA	FT%	OFF	DEF	TOT	AVG	PF-FO	A	TO	BLK	STL		PTS	AVG
2023-24	LCU	13-0	182/14.0	16-30	.533	5-11	.455	13-19	.684	5	22	27	2.1	12-0	8	10	1	6		50	3.8
TOTAL		13-0	182/14.0	16-30	.533	5-11	.455	13-19	.684	5	22	27	2.1	12-0	8	10	1	6		50	3.8

Single Game Highs

Statistic	Value	
Points	10	at Colo. Christian 11/10/23
Rebounds	4	at Cameron 01/04/24, at Midwestern St. 01/06/24
Assists	2	vs Tex. A&M Int'l 12/10/23
Steals	2	vs King (TN) 11/18/23, at Southern Nazarene 11/25/23
Blocks	1	at Cameron 01/04/24
FG Made	3	at Colo. Christian 11/10/23
FG Attempts	6	vs King (TN) 11/18/23
3FG Made	2	at Cameron 01/04/24
3FG Attempts	2	vs Union (TN) 11/03/23, vs King (TN) 11/18/23, at Cameron 01/04/24
FT Made	6	vs Union (TN) 11/03/23
FT Attempts	7	vs Union (TN) 11/03/23

FOSTER, Grace

				Field Goals		3-Point		F-Throws		Rebounds										Scoring	
SEASON	TEAM	GP-GS	MIN/AVG	FG-FGA	FG%	3FG-3FGA	3FG%	FT-FTA	FT%	OFF	DEF	TOT	AVG	PF-FO	A	TO	BLK	STL		PTS	AVG
2021-22	LCU	35-0	549/15.7	95-189	.503	23-70	.329	46-57	.807	29	85	114	3.3	57-1	25	41	28	11		259	7.4
2022-23	LCU	35-35	1143/32.7	189-411	.460	47-128	.367	150-164	.915	48	263	311	8.9	71-1	66	87	26	22		575	16.4
2023-24	LCU	13-13	434/33.4	73-148	.493	20-47	.426	68-74	.919	4	83	87	6.7	20-0	38	46	8	6		234	18.0
TOTAL		83-48	2125/25.6	357-748	.477	90-245	.367	264-295	.895	81	431	512	6.2	148-2	129	174	62	39		1068	12.9

Single Game Highs

Statistic	Value	
Points	36	vs Missouri Western 11/06/22
Rebounds	17	vs Angelo St. 02/02/23
Assists	7	vs St. Mary's (TX) 02/18/23
Steals	2	7 times
Blocks	6	at Tex. A&M-Commerce 01/13/22
FG Made	13	vs Missouri Western 11/06/22
FG Attempts	20	vs Mo. Southern St. 11/05/22, vs Missouri Western 11/06/22
3FG Made	5	vs Tex. A&M Int'l 12/10/23
3FG Attempts	8	vs Western N.M. 01/14/23
FT Made	13	vs Adams St. 11/05/23, vs CSU Pueblo 11/11/23
FT Attempts	13	vs Adams St. 11/05/23, vs CSU Pueblo 11/11/23

LUBBOCK CHRISTIAN UNIVERSITY WOMEN'S BASKETBALL GAME NOTES
JOHNSON, Deja

				Field Goals		3-Point		F-Throws		Rebounds									Scoring	
SEASON	TEAM	GP-GS	MIN/AVG	FG-FGA	FG%	3FG-3FGA	3FG%	FT-FTA	FT%	OFF	DEF	TOT	AVG	PF-FO	A	TO	BLK	STL	PTS	AVG
2022-23	LCU	11-0	62/5.6	4-10	.400	1-5	.200	7-8	.875	4	8	12	1.1	3-0	6	2	0	3	16	1.5
2023-24	LCU	5-0	20/4.1	3-6	.500	2-4	.500	0-0	.000	1	3	4	0.8	4-0	0	2	0	1	8	1.6
TOTAL		16-0	83/5.2	7-16	.438	3-9	.333	7-8	.875	5	11	16	1.0	7-0	6	4	0	4	24	1.5

Single Game Highs

Statistic	Value	
Points	8	vs King (TN) 11/18/23
Rebounds	3	vs Cameron 12/30/22
Assists	2	vs Cameron 12/30/22
Steals	1	4 times
FG Made	3	vs King (TN) 11/18/23
FG Attempts	5	vs King (TN) 11/18/23
3FG Made	2	vs King (TN) 11/18/23
3FG Attempts	4	vs King (TN) 11/18/23
FT Made	4	vs Colo. Christian 11/11/22
FT Attempts	4	vs Colo. Christian 11/11/22

JOHNSON, Tia

JOHNSON, Ha

				Field Goals		3-Point		F-Throws		Rebounds										Scoring	
SEASON	TEAM	GP-GS	MIN/AVG	FG-FGA	FG%	3FG-3FGA	3FG%	FT-FTA	FT%	OFF	DEF	TOT	AVG	PF-FO	A	TO	BLK	STL	PTS	AVG	
2022-23	LCU	11-0	54/4.9	7-23	.304	2-10	.200	3-3	1.000	2	10	12	1.1	10-0	3	3	0	5	19	1.7	
2023-24	LCU	7-0	29/4.1	1-2	.500	0-1	.000	0-0	.000	0	5	5	0.7	3-0	4	7	0	1	2	0.3	
TOTAL		18-0	82/4.6	8-25	.320	2-11	.182	3-3	1.000	2	15	17	0.9	13-0	7	10	0	6	21	1.2	

Single Game Highs

Statistic	Value	
Points	5	vs Tex. Permian Basin 02/04/23
Rebounds	5	vs King (TN) 11/18/23
Assists	3	vs King (TN) 11/18/23
Steals	2	vs St. Edward's 02/16/23
FG Made	2	at Midwestern St. 01/26/23, vs Tex. Permian Basin 02/04/23
FG Attempts	5	at Midwestern St. 01/26/23, vs Tex. Permian Basin 02/04/23
3FG Made	1	vs Tex. Permian Basin 02/04/23, vs Ark.-Fort Smith 12/03/22
3FG Attempts	2	vs Tex. Permian Basin 02/04/23, vs Ark.-Fort Smith 12/03/22
FT Made	2	vs St. Edward's 02/16/23
FT Attempts	2	vs St. Edward's 02/16/23

MADDOX, Maci

				Field Goals		3-Point		F-Throws		Rebounds										Scoring	
SEASON	TEAM	GP-GS	MIN/AVG	FG-FGA	FG%	3FG-3FGA	3FG%	FT-FTA	FT%	OFF	DEF	TOT	AVG	PF-FO	A	TO	BLK	STL	PTS	AVG	
2020-21	LCU	15-0	98/6.6	13-25	.520	3-8	.375	3-3	1.000	3	6	9	0.6	5-0	8	7	0	13	32	2.1	
2021-22	LCU	31-0	356/11.5	26-63	.413	10-21	.476	7-7	1.000	2	12	14	0.5	10-0	21	17	1	16	69	2.2	
2022-23	LCU	35-35	1284/36.7	148-349	.424	31-88	.352	53-68	.779	14	109	123	3.5	36-0	146	93	4	65	380	10.9	
2023-24	LCU	13-13	490/37.7	67-150	.447	13-34	.382	20-24	.833	9	43	52	4.0	20-0	49	35	0	26	167	12.8	
TOTAL		94-48	2227/23.7	254-587	.433	57-151	.377	83-102	.814	28	170	198	2.1	71-0	224	152	5	120	648	6.9	

Single Game Highs

Statistic	Value	
Points	20	vs CSU Pueblo 11/11/23
Rebounds	8	vs Mont. St. Billings 12/17/22, at Midwestern St. 01/06/24
Assists	9	at Tex. A&M-Kingsville 12/10/22
Steals	5	at Texas Woman's 01/21/23, vs CSU Pueblo 11/11/23, at Ark.-Fort Smith 12/02/23
Blocks	1	5 times
FG Made	8	vs Okla. Christian 12/01/22, at West Tex. A&M 02/23/23, vs Union (TN) 11/03/23
FG Attempts	19	at Tex. A&M Int'l 12/08/22
3FG Made	4	at UT Tyler 01/19/23
3FG Attempts	7	at UT Tyler 01/19/23
FT Made	8	vs Texas Woman's 03/10/23
FT Attempts	9	vs Texas Woman's 03/10/23

LUBBOCK CHRISTIAN UNIVERSITY WOMEN'S BASKETBALL GAME NOTES
MATHEWS, Kimber

				Field Goals		3-Point		F-Throws		Rebounds										Scoring	
SEASON	TEAM	GP-GS	MIN/AVG	FG-FGA	FG%	3FG-3FGA	3FG%	FT-FTA	FT%	OFF	DEF	TOT	AVG	PF-FO	A	TO	BLK	STL		PTS	AVG
2023-24	LCU	1-0	11/11.0	1-2	.500	1-1	1.000	2-2	1.000	1	0	1	1.0	3-0	0	0	0	0		5	5.0
TOTAL		1-0	11/11.0	1-2	.500	1-1	1.000	2-2	1.000	1	0	1	1.0	3-0	0	0	0	0		5	5.0

Single Game Highs

Statistic	Value	
Points	5	vs King (TN) 11/18/23
Rebounds	1	vs King (TN) 11/18/23
FG Made	1	vs King (TN) 11/18/23
FG Attempts	2	vs King (TN) 11/18/23
3FG Made	1	vs King (TN) 11/18/23
3FG Attempts	1	vs King (TN) 11/18/23
FT Made	2	vs King (TN) 11/18/23
FT Attempts	2	vs King (TN) 11/18/23

MCCOY, Martie

				Field Goals		3-Point		F-Throws		Rebounds										Scoring	
SEASON	TEAM	GP-GS	MIN/AVG	FG-FGA	FG%	3FG-3FGA	3FG%	FT-FTA	FT%	OFF	DEF	TOT	AVG	PF-FO	A	TO	BLK	STL		PTS	AVG
2022-23	LCU	35-18	562/16.1	40-106	.377	9-30	.300	31-39	.795	17	68	85	2.4	77-3	26	27	6	13		120	3.4
2023-24	LCU	13-13	235/18.1	11-35	.314	0-7	.000	10-14	.714	10	37	47	3.6	37-1	15	18	5	5		32	2.5
TOTAL		48-31	797/16.6	51-141	.362	9-37	.243	41-53	.774	27	105	132	2.8	114-4	41	45	11	18		152	3.2

Single Game Highs

Statistic	Value	
Points	16	at West Tex. A&M 02/23/23
Rebounds	7	vs Missouri Western 11/06/22
Assists	4	vs Union (TN) 11/03/23, vs King (TN) 11/18/23
Steals	3	vs Black Hills St. 03/11/23
Blocks	2	vs St. Mary's (TX) 02/18/23
FG Made	6	at West Tex. A&M 02/23/23
FG Attempts	9	vs West Tex. A&M 02/25/23
3FG Made	2	at West Tex. A&M 02/23/23
3FG Attempts	3	at Midwestern St. 01/26/23, vs Angelo St. 02/02/23, vs UT Tyler 03/13/23
FT Made	5	vs Angelo St. 02/02/23
FT Attempts	6	vs Angelo St. 02/02/23

LUBBOCK CHRISTIAN UNIVERSITY WOMEN'S BASKETBALL GAME NOTES
ROBERTSON, Audrey

				Field Goals		3-Point		F-Throws		Rebounds										Scoring	
SEASON	TEAM	GP-GS	MIN/AVG	FG-FGA	FG%	3FG-3FGA	3FG%	FT-FTA	FT%	OFF	DEF	TOT	AVG	PF-FO	A	TO	BLK	STL		PTS	AVG
2020-21	LCU	20-0	177/8.9	12-33	.364	3-14	.214	7-9	.778	17	7	24	1.2	14-0	11	12	0	9	34	1.7	
2021-22	LCU	35-3	577/16.5	52-126	.413	9-37	.243	39-53	.736	20	25	45	1.3	49-0	35	27	6	25	152	4.3	
2022-23	LCU	35-35	1115/31.9	120-281	.427	24-82	.293	100-125	.800	40	125	165	4.7	67-2	103	77	7	44	364	10.4	
2023-24	LCU	13-12	393/30.2	59-117	.504	13-29	.448	23-33	.697	16	38	54	4.2	24-0	25	28	0	12	154	11.8	
TOTAL		103-50	2262/22.0	243-557	.436	49-162	.302	169-220	.768	93	195	288	2.8	154-2	174	144	13	90	704	6.8	

Single Game Highs

Statistic	Value	
Points	20	at Okla. Christian 11/30/23
Rebounds	12	at Angelo St. 01/07/23
Assists	6	at UT Tyler 01/02/21, vs Colo. Christian 11/11/22, vs Southwestern Okla. 11/17/23
Steals	4	vs Okla. Christian 12/01/22, vs Colo. Christian 11/11/22
Blocks	2	at Southwestern Okla. 11/21/22, at Eastern N.M. 02/11/23
FG Made	8	at Okla. Christian 11/30/23, at Midwestern St. 01/06/24
FG Attempts	16	at Midwestern St. 01/06/24
3FG Made	3	vs Eastern N.M. 01/12/23, vs Tex. Permian Basin 02/04/23
3FG Attempts	6	vs UT Tyler 03/13/23
FT Made	8	vs Ark.-Fort Smith 03/01/22
FT Attempts	10	vs Ark.-Fort Smith 03/01/22

SCHUMANN, Reese

				Field Goals		3-Point		F-Throws		Rebounds										Scoring	
SEASON	TEAM	GP-GS	MIN/AVG	FG-FGA	FG%	3FG-3FGA	3FG%	FT-FTA	FT%	OFF	DEF	TOT	AVG	PF-FO	A	TO	BLK	STL		PTS	AVG
2021-22	LCU	12-0	64/5.4	5-12	.417	0-0	.000	3-6	.500	9	13	22	1.8	9-0	0	3	2	0	13	1.1	
2022-23	LCU	35-1	556/15.9	65-124	.524	0-0	.000	39-69	.565	52	114	166	4.7	87-2	14	54	39	16	169	4.8	
2023-24	LCU	13-0	177/13.6	16-36	.444	0-0	.000	11-17	.647	19	22	41	3.2	31-3	8	12	3	9	43	3.3	
TOTAL		60-1	797/13.3	86-172	.500	0-0	.000	53-92	.576	80	149	229	3.8	127-5	22	69	44	25	225	3.8	

Single Game Highs

Statistic	Value	
Points	14	at Cameron 01/28/23
Rebounds	10	at Tex. A&M Int'l 12/08/22
Assists	2	at Tex. A&M-Kingsville 12/10/22, at Western N.M. 02/09/23, at Ark.-Fort Smith 12/02/23
Steals	3	vs Tex. A&M-Kingsville 12/12/23
Blocks	6	vs Western N.M. 01/14/23
FG Made	7	at Cameron 01/28/23
FG Attempts	8	vs Western N.M. 01/14/23, at Cameron 01/28/23, at Midwestern St. 01/06/24
FT Made	3	4 times
FT Attempts	6	vs Midwestern St. 01/01/23

SPURGIN, Audrey

				Field Goals		3-Point		F-Throws		Rebounds										Scoring	
SEASON	TEAM	GP-GS	MIN/AVG	FG-FGA	FG%	3FG-3FGA	3FG%	FT-FTA	FT%	OFF	DEF	TOT	AVG	PF-FO	A	TO	BLK	STL		PTS	AVG
2021-22	LCU	14-0	67/4.8	4-17	.235	0-0	.000	10-15	.667	1	13	14	1.0	14-0	0	9	1	2	18	1.3	
2022-23	LCU	29-0	207/7.1	24-61	.393	0-1	.000	31-47	.660	17	26	43	1.5	39-0	4	15	3	2	79	2.7	
2023-24	LCU	13-0	146/11.3	13-31	.419	0-0	.000	11-22	.500	7	18	25	1.9	18-0	1	12	1	1	37	2.8	
TOTAL		56-0	420/7.5	41-109	.376	0-1	.000	52-84	.619	25	57	82	1.5	71-0	5	36	5	5	134	2.4	

Single Game Highs

Statistic	Value	
Points	12	vs Texas Woman's 03/04/23
Rebounds	6	vs Southwestern Okla. 11/17/23, at Midwestern St. 01/06/24
Assists	1	5 times
Steals	2	vs Minn.-Crookston 11/25/21
Blocks	1	5 times
FG Made	3	vs Cameron 12/30/22, vs Western N.M. 01/14/23, vs Texas Woman's 03/04/23
FG Attempts	5	5 times
3FG Attempts	1	vs Western Colo. 11/27/22
FT Made	6	vs Texas Woman's 03/04/23
FT Attempts	6	4 times

LUBBOCK CHRISTIAN UNIVERSITY WOMEN'S BASKETBALL GAME NOTES
STOVALL, Shaylee

Overall, Shaysie

				Field Goals		3-Point		F-Throws		Rebounds									Scoring	
SEASON	TEAM	GP-GS	MIN/AVG	FG-FGA	FG%	3FG-3FGA	3FG%	FT-FTA	FT%	OFF	DEF	TOT	AVG	PF-FO	A	TO	BLK	STL	PTS	AVG
2020-21	LCU	16-0	86/5.4	4-15	.267	3-10	.300	4-4	1.000	1	4	5	0.3	5-0	11	4	0	1	15	0.9
2021-22	LCU	27-1	193/7.2	12-28	.429	9-16	.563	8-10	.800	2	14	16	0.6	15-0	6	7	0	8	41	1.5
2022-23	LCU	35-35	938/26.8	75-186	.403	46-115	.400	61-77	.792	9	41	50	1.4	52-0	34	36	0	20	257	7.3
2023-24	LCU	13-13	346/26.6	23-71	.324	10-37	.270	22-23	.957	5	12	17	1.3	20-0	14	13	1	17	78	6.0
TOTAL		91-49	1564/17.2	114-300	.380	68-178	.382	95-114	.833	17	71	88	1.0	92-0	65	60	1	46	391	4.3

Single Game Highs

Statistic	Value	
Points	18	at Texas Woman's 01/21/23
Rebounds	4	5 times
Assists	4	at Midwestern St. 01/26/23, vs King (TN) 11/18/23
Steals	4	at Tex. Permian Basin 01/05/23
Blocks	1	at Midwestern St. 01/06/24
FG Made	6	vs Okla. Christian 12/01/22, at Texas Woman's 01/21/23
FG Attempts	10	at Tex. A&M Int'l 12/08/22, at UT Tyler 01/19/23
3FG Made	4	at Angelo St. 01/07/23, at Texas Woman's 01/21/23
3FG Attempts	8	at UT Tyler 01/19/23
FT Made	9	vs Mo. Southern St. 11/05/22
FT Attempts	10	vs Mo. Southern St. 11/05/22

THOMAS, Taylor

				Field Goals		3-Point		F-Throws		Rebounds										Scoring	
SEASON	TEAM	GP-GS	MIN/AVG	FG-FGA	FG%	3FG-3FGA	3FG%	FT-FTA	FT%	OFF	DEF	TOT	AVG	PF-FO	A	TO	BLK	STL	PTS	AVG	
2022-23	LCU	25-0	215/8.6	19-42	.452	1-11	.091	21-23	.913	1	20	21	0.8	26-0	8	22	3	10	60	2.4	
2023-24	LCU	13-1	155/11.9	9-28	.321	2-8	.250	11-13	.846	4	10	14	1.1	15-1	6	12	0	6	31	2.4	
TOTAL		38-1	370/9.7	28-70	.400	3-19	.158	32-36	.889	5	30	35	0.9	41-1	14	34	3	16	91	2.4	

Single Game Highs

Statistic	Value	
Points	9	vs Tex. Permian Basin 02/04/23, vs Union (TN) 11/03/23
Rebounds	3	4 times
Assists	2	vs Tex. Permian Basin 02/04/23, vs King (TN) 11/18/23
Steals	3	vs Midwestern St. 01/01/23
Blocks	1	vs Mo. Southern St. 11/05/22, vs Cameron 12/30/22, at Angelo St. 01/07/23
FG Made	3	vs Okla. Christian 12/01/22, vs Tex. Permian Basin 02/04/23, vs Union (TN) 11/03/23
FG Attempts	6	vs Tex. Permian Basin 02/04/23
3FG Made	1	vs Tex. Permian Basin 02/04/23, vs Union (TN) 11/03/23, vs Adams St. 11/05/23
3FG Attempts	3	vs Tex. Permian Basin 02/04/23
FT Made	4	at Tex. Permian Basin 01/05/23, vs Colo. Christian 11/11/22
FT Attempts	5	at Tex. Permian Basin 01/05/23



2023-24 Lubbock Christian Women's Basketball
Individual Game-by-Game
All games

Page 1/13
as of Jan 10, 2024

#0 FOSTER, Grace

Opponent	Date	GS	MIN	Total		3-Pointers		Free throws		Rebounds				PF	A	TO	BLK	STL	PTS	AVG
				FG-FGA	PCT	3FG-3FGA	PCT	FT-FTA	PCT	OFF	DEF	TOT	AVG							
Union (TN)	11/03/2023	*	31:10	7-12	.583	0-2	.000	2-5	.400	1	6	7	7.0	3	4	8	1	0	16	16.0
Adams St.	11/05/2023	*	39:04	6-14	.429	3-6	.500	13-13	1.000	0	8	8	7.5	1	3	3	1	0	28	22.0
at Colo. Christian	11/10/2023	*	27:58	1-5	.200	0-2	.000	7-8	.875	0	6	6	7.0	4	0	7	0	0	9	17.7
vs CSU Pueblo	11/11/2023	*	36:57	5-9	.556	1-2	.500	13-13	1.000	1	7	8	7.3	0	3	5	1	0	24	19.3
Southwestern Okla.	11/17/2023	*	36:03	3-7	.429	0-1	.000	4-4	1.000	0	9	9	7.6	1	4	6	1	0	10	17.4
King (TN)	11/18/2023	*	16:54	4-10	.400	1-2	.500	0-0	.000	0	5	5	7.2	0	2	1	0	1	9	16.0
at Southern Nazarene	11/25/2023	*	34:02	8-14	.571	3-4	.750	3-3	1.000	0	2	2	6.4	4	2	1	2	1	22	16.9
at Okla. Christian	11/30/2023	*	33:32	4-12	.333	0-1	.000	9-10	.900	0	9	9	6.8	1	1	4	0	1	17	16.9
at Ark.-Fort Smith	12/02/2023	*	31:56	4-7	.571	0-3	.000	4-4	1.000	0	2	2	6.2	2	4	2	0	1	12	16.3
Tex. A&M Int'l	12/10/2023	*	33:36	8-13	.615	5-7	.714	6-7	.857	1	4	5	6.1	0	3	2	2	1	27	17.4
Tex. A&M-Kingsville	12/12/2023	*	32:43	7-14	.500	3-6	.500	4-4	1.000	1	7	8	6.3	0	3	0	0	1	21	17.7
at Cameron	01/04/2024	*	36:34	8-17	.471	1-5	.200	1-1	1.000	0	9	9	6.5	2	3	2	0	0	18	17.8
at Midwestern St.	01/06/2024	*	43:25	8-14	.571	3-6	.500	2-2	1.000	0	9	9	6.7	2	6	5	0	0	21	18.0
Totals		13	433:54	73-148	.493	20-47	.426	68-74	.919	4	83	87	6.7	20	38	46	8	6	234	18.0

Player Averages

Games Played	Minutes/game	Points/game	FG Pct	3FG Pct	FT Pct	Rebounds/game	Assists/game	Turnovers/game	Assist/Turnover ratio	Steals/game	Blocks/game
13	33.4	18.0	49.3	42.6	91.9	6.7	2.9	3.5	0.8	0.5	0.6



2023-24 Lubbock Christian Women's Basketball
Individual Game-by-Game
All games

Page 2/13
as of Jan 10, 2024

#1 CHAPPELL, Kennedy

Opponent	Date	GS	MIN	Total		3-Pointers		Free throws		Rebounds				PF	A	TO	BLK	STL	PTS	AVG
				FG-FGA	PCT	3FG-3FGA	PCT	FT-FTA	PCT	OFF	DEF	TOT	AVG							
Union (TN)	11/03/2023		19:59	1-4	.250	0-2	.000	6-7	.857	1	1	2	2.0	2	1	0	0	0	8	8.0
Adams St.	11/05/2023		08:26	1-2	.500	0-0	.000	0-0	.000	0	0	0	1.0	1	1	0	0	0	2	5.0
at Colo. Christian	11/10/2023		19:49	3-4	.750	0-1	.000	4-6	.667	1	2	3	1.7	0	1	0	0	0	10	6.7
vs CSU Pueblo	11/11/2023		11:24	1-1	1.000	0-0	.000	0-0	.000	0	1	1	1.5	1	0	2	0	1	2	5.5
Southwestern Okla.	11/17/2023		11:38	1-1	1.000	0-0	.000	1-2	.500	0	1	1	1.4	0	0	1	0	1	3	5.0
King (TN)	11/18/2023		17:37	2-6	.333	0-2	.000	0-0	.000	1	2	3	1.7	3	1	0	0	2	4	4.8
at Southern Nazarene	11/25/2023		13:38	1-2	.500	0-1	.000	0-0	.000	0	1	1	1.6	1	0	1	0	2	2	4.4
at Okla. Christian	11/30/2023		12:54	2-2	1.000	1-1	1.000	0-0	.000	0	2	2	1.6	1	0	1	0	0	5	4.5
at Ark.-Fort Smith	12/02/2023		10:24	0-0	.000	0-0	.000	0-0	.000	0	2	2	1.7	1	0	1	0	0	0	4.0
Tex. A&M Int'l	12/10/2023		09:51	0-0	.000	0-0	.000	2-4	.500	0	1	1	1.6	0	2	1	0	0	2	3.8
Tex. A&M-Kingsville	12/12/2023		17:11	1-4	.250	1-1	1.000	0-0	.000	1	2	3	1.7	0	1	1	0	0	3	3.7
at Cameron	01/04/2024		14:42	2-2	1.000	2-2	1.000	0-0	.000	1	3	4	1.9	1	0	0	1	0	6	3.9
at Midwestern St.	01/06/2024		14:25	1-2	.500	1-1	1.000	0-0	.000	0	4	4	2.1	1	1	2	0	0	3	3.8
Totals		0	181:58	16-30	.533	5-11	.455	13-19	.684	5	22	27	2.1	12	8	10	1	6	50	3.8

Player Averages

Games Played	Minutes/game	Points/game	FG Pct	3FG Pct	FT Pct	Rebounds/game	Assists/game	Turnovers/game	Assist/Turnover ratio	Steals/game	Blocks/game
13	14.0	3.8	53.3	45.5	68.4	2.1	0.6	0.8	0.8	0.5	0.1



2023-24 Lubbock Christian Women's Basketball
Individual Game-by-Game
All games

Page 3/13
as of Jan 10, 2024

#2 MADDUX, Maci

Opponent	Date	GS	MIN	Total		3-Pointers		Free throws		Rebounds				PF	A	TO	BLK	STL	PTS	AVG
				FG-FGA	PCT	3FG-3FGA	PCT	FT-FTA	PCT	OFF	DEF	TOT	AVG							
Union (TN)	11/03/2023	*	38:40	8-11	.727	0-0	.000	0-0	.000	0	4	4	4.0	4	4	4	0	1	16	16.0
Adams St.	11/05/2023	*	40:00	6-11	.545	2-3	.667	0-0	.000	0	4	4	4.0	1	4	2	0	3	14	15.0
at Colo. Christian	11/10/2023	*	44:35	4-14	.286	0-2	.000	4-4	1.000	1	5	6	4.7	3	4	1	0	3	12	14.0
vs CSU Pueblo	11/11/2023	*	38:46	7-18	.389	2-5	.400	4-4	1.000	2	4	6	5.0	1	5	5	0	5	20	15.5
Southwestern Okla.	11/17/2023	*	37:37	6-13	.462	1-3	.333	2-2	1.000	1	2	3	4.6	0	2	2	0	2	15	15.4
King (TN)	11/18/2023	*	20:56	6-8	.750	1-1	1.000	1-2	.500	0	3	3	4.3	1	1	0	0	1	14	15.2
at Southern Nazarene	11/25/2023	*	39:55	6-14	.429	0-2	.000	0-0	.000	1	3	4	4.3	3	5	4	0	3	12	14.7
at Okla. Christian	11/30/2023	*	37:11	4-10	.400	1-4	.250	5-6	.833	1	3	4	4.3	3	2	3	0	0	14	14.6
at Ark.-Fort Smith	12/02/2023	*	40:00	7-11	.636	0-2	.000	0-0	.000	0	2	2	4.0	2	0	4	0	5	14	14.6
Tex. A&M Int'l	12/10/2023	*	35:14	2-11	.182	0-0	.000	0-0	.000	0	3	3	3.9	0	7	5	0	1	4	13.5
Tex. A&M-Kingsville	12/12/2023	*	34:39	3-8	.375	0-2	.000	0-0	.000	2	2	4	3.9	1	3	2	0	1	6	12.8
at Cameron	01/04/2024	*	38:02	4-10	.400	3-6	.500	2-2	1.000	1	0	1	3.7	0	5	1	0	1	13	12.8
at Midwestern St.	01/06/2024	*	44:02	4-11	.364	3-4	.750	2-4	.500	0	8	8	4.0	1	7	2	0	0	13	12.8
Totals		13	489:36	67-150	.447	13-34	.382	20-24	.833	9	43	52	4.0	20	49	35	0	26	167	12.8

Player Averages

Games Played	Minutes/game	Points/game	FG Pct	3FG Pct	FT Pct	Rebounds/game	Assists/game	Turnovers/game	Assist/Turnover ratio	Steals/game	Blocks/game
13	37.7	12.8	44.7	38.2	83.3	4.0	3.8	2.7	1.4	2.0	0.0



2023-24 Lubbock Christian Women's Basketball
Individual Game-by-Game
All games

Page 4/13
as of Jan 10, 2024

#3 ROBERTSON, Audrey

Opponent	Date	GS	MIN	Total		3-Pointers		Free throws		Rebounds				PF	A	TO	BLK	STL	PTS	AVG
				FG-FGA	PCT	3FG-3FGA	PCT	FT-FTA	PCT	OFF	DEF	TOT	AVG							
Union (TN)	11/03/2023		29:41	4-10	.400	1-2	.500	3-4	.750	0	3	3	3.0	3	2	1	0	3	12	12.0
Adams St.	11/05/2023	*	31:18	3-9	.333	0-1	.000	0-0	.000	1	1	2	2.5	2	1	3	0	1	6	9.0
at Colo. Christian	11/10/2023	*	39:28	6-9	.667	2-2	1.000	2-2	1.000	1	5	6	3.7	2	3	2	0	1	16	11.3
vs CSU Pueblo	11/11/2023	*	32:34	4-7	.571	1-3	.333	4-6	.667	1	7	8	4.8	2	1	4	0	2	13	11.8
Southwestern Okla.	11/17/2023	*	31:33	6-8	.750	1-2	.500	1-1	1.000	0	2	2	4.2	1	6	2	0	1	14	12.2
King (TN)	11/18/2023	*	14:27	3-4	.750	1-2	.500	1-1	1.000	0	1	1	3.7	1	3	1	0	0	8	11.5
at Southern Nazarene	11/25/2023	*	30:59	2-8	.250	0-2	.000	0-0	.000	0	5	5	3.9	0	1	3	0	1	4	10.4
at Okla. Christian	11/30/2023	*	31:15	8-11	.727	2-2	1.000	2-4	.500	1	3	4	3.9	2	2	0	0	1	20	11.6
at Ark.-Fort Smith	12/02/2023	*	26:50	5-9	.556	2-3	.667	6-8	.750	1	3	4	3.9	4	0	2	0	1	18	12.3
Tex. A&M Int'l	12/10/2023	*	32:49	4-8	.500	0-3	.000	1-2	.500	2	2	4	3.9	3	1	5	0	1	9	12.0
Tex. A&M-Kingsville	12/12/2023	*	24:54	2-9	.222	0-0	.000	2-3	.667	3	1	4	3.9	2	0	1	0	0	6	11.5
at Cameron	01/04/2024	*	32:00	4-9	.444	2-3	.667	0-0	.000	2	2	4	3.9	1	2	1	0	0	10	11.3
at Midwestern St.	01/06/2024	*	34:51	8-16	.500	1-4	.250	1-2	.500	4	3	7	4.2	1	3	3	0	0	18	11.8
Totals		12	392:39	59-117	.504	13-29	.448	23-33	.697	16	38	54	4.2	24	25	28	0	12	154	11.8

Player Averages

Games Played	Minutes/ game	Points/ game	FG Pct	3FG Pct	FT Pct	Rebounds/ game	Assists/ game	Turnovers/ game	Assist/Turnover ratio	Steals/ game	Blocks/ game
13	30.2	11.8	50.4	44.8	69.7	4.2	1.9	2.2	0.9	0.9	0.0



2023-24 Lubbock Christian Women's Basketball
Individual Game-by-Game
All games

Page 5/13
as of Jan 10, 2024

#4 MATHEWS, Kimber

Opponent	Date			Total		3-Pointers		Free throws		Rebounds											
		GS	MIN	FG-FGA	PCT	3FG-3FGA	PCT	FT-FTA	PCT	OFF	DEF	TOT	AVG	PF	A	TO	BLK	STL	PTS	AVG	
King (TN)	11/18/2023		10:58	1-2	.500	1-1	1.000	2-2	1.000	1	0	1	1.0	3	0	0	0	0	5	5.0	
Totals		0	10:58	1-2	.500	1-1	1.000	2-2	1.000	1	0	1	1.0	3	0	0	0	0	5	5.0	

Player Averages

Games Played	Minutes/ game	Points/ game	FG Pct	3FG Pct	FT Pct	Rebounds/ game	Assists/ game	Turnovers/ game	Assist/Turnover ratio	Steals/ game	Blocks/ game
1	11.0	5.0	50.0	100.0	100.0	1.0	0.0	0.0	0.0	0.0	0.0



2023-24 Lubbock Christian Women's Basketball
Individual Game-by-Game
All games

Page 6/13
as of Jan 10, 2024

#11 ALLEN, Taylor

Opponent	Date	GS	MIN	Total		3-Pointers		Free throws		Rebounds				PF	A	TO	BLK	STL	PTS	AVG
				FG-FGA	PCT	3FG-3FGA	PCT	FT-FTA	PCT	OFF	DEF	TOT	AVG							
King (TN)	11/18/2023		12:53	4-7	.571	1-1	1.000	0-0	.000	2	1	3	3.0	0	2	0	0	1	9	9.0
at Ark.-Fort Smith	12/02/2023		01:18	0-0	.000	0-0	.000	0-0	.000	0	0	0	1.5	0	0	0	0	0	0	4.5
Tex. A&M Int'l	12/10/2023		05:26	1-1	1.000	0-0	.000	0-0	.000	0	0	0	1.0	0	0	1	0	1	2	3.7
Tex. A&M-Kingsville	12/12/2023		05:56	0-0	.000	0-0	.000	0-0	.000	0	0	0	0.8	0	0	0	0	0	0	2.8
at Cameron	01/04/2024		03:42	0-0	.000	0-0	.000	0-0	.000	0	1	1	0.8	1	0	0	0	0	0	2.2
at Midwestern St.	01/06/2024		03:20	0-1	.000	0-0	.000	0-0	.000	0	0	0	0.7	0	0	1	0	0	0	1.8
Totals		0	32:34	5-9	.556	1-1	1.000	0-0	.000	2	2	4	0.7	1	2	2	0	2	11	1.8

Player Averages

Games Played	Minutes/game	Points/game	FG Pct	3FG Pct	FT Pct	Rebounds/game	Assists/game	Turnovers/game	Assist/Turnover ratio	Steals/game	Blocks/game
6	5.4	1.8	55.6	100.0	0.0	0.7	0.3	0.3	1.0	0.3	0.0



2023-24 Lubbock Christian Women's Basketball
Individual Game-by-Game
All games

Page 7/13
as of Jan 10, 2024

#12 THOMAS, Taylor

Opponent	Date	GS	MIN	Total		3-Pointers		Free throws		Rebounds											
				FG-FGA	PCT	3FG-3FGA	PCT	FT-FTA	PCT	OFF	DEF	TOT	AVG	PF	A	TO	BLK	STL	PTS	AVG	
Union (TN)	11/03/2023	*	20:12	3-5	.600	1-1	1.000	2-2	1.000	1	2	3	3.0	5	1	1	0	0	9	9.0	
Adams St.	11/05/2023		13:35	1-2	.500	1-1	1.000	0-0	.000	0	3	3	3.0	1	0	1	0	2	3	6.0	
at Colo. Christian	11/10/2023		10:16	0-1	.000	0-1	.000	0-0	.000	0	0	0	2.0	0	0	2	0	1	0	4.0	
vs CSU Pueblo	11/11/2023		08:18	2-2	1.000	0-0	.000	1-1	1.000	0	1	1	1.8	0	1	0	0	0	5	4.3	
Southwestern Okla.	11/17/2023		11:13	0-2	.000	0-1	.000	2-2	1.000	1	0	1	1.6	0	1	1	0	1	2	3.8	
King (TN)	11/18/2023		18:31	1-2	.500	0-0	.000	3-4	.750	0	0	0	1.3	2	2	1	0	1	5	4.0	
at Southern Nazarene	11/25/2023		07:44	1-2	.500	0-0	.000	0-0	.000	0	0	0	1.1	2	0	1	0	0	2	3.7	
at Okla. Christian	11/30/2023		11:18	0-1	.000	0-0	.000	1-2	.500	1	2	3	1.4	3	0	0	0	0	1	3.4	
at Ark.-Fort Smith	12/02/2023		09:38	0-0	.000	0-0	.000	0-0	.000	0	0	0	1.2	1	0	2	0	1	0	3.0	
Tex. A&M Int'l	12/10/2023		12:46	0-2	.000	0-1	.000	2-2	1.000	0	2	2	1.3	0	1	0	0	0	2	2.9	
Tex. A&M-Kingsville	12/12/2023		09:54	0-3	.000	0-1	.000	0-0	.000	0	0	0	1.2	0	0	2	0	0	0	2.6	
at Cameron	01/04/2024		11:18	1-5	.200	0-2	.000	0-0	.000	1	0	1	1.2	0	0	0	0	0	2	2.6	
at Midwestern St.	01/06/2024		10:32	0-1	.000	0-0	.000	0-0	.000	0	0	0	1.1	1	0	1	0	0	0	2.4	
Totals		1	155:14	9-28	.321	2-8	.250	11-13	.846	4	10	14	1.1	15	6	12	0	6	31	2.4	

Player Averages

Games Played	Minutes/ game	Points/ game	FG Pct	3FG Pct	FT Pct	Rebounds/ game	Assists/ game	Turnovers/ game	Assist/Turnover ratio	Steals/ game	Blocks/ game
13	11.9	2.4	32.1	25.0	84.6	1.1	0.5	0.9	0.5	0.5	0.0



2023-24 Lubbock Christian Women's Basketball
Individual Game-by-Game
All games

Page 8/13
as of Jan 10, 2024

#15 STOVALL, Shaylee

Opponent	Date	GS	MIN	Total		3-Pointers		Free throws		Rebounds				PF	A	TO	BLK	STL	PTS	AVG
				FG-FGA	PCT	3FG-3FGA	PCT	FT-FTA	PCT	OFF	DEF	TOT	AVG							
Union (TN)	11/03/2023	*	24:34	2-5	.400	0-1	.000	3-4	.750	2	0	2	2.0	1	3	1	0	1	7	7.0
Adams St.	11/05/2023	*	26:57	1-4	.250	1-3	.333	8-8	1.000	0	0	0	1.0	1	2	1	0	1	11	9.0
at Colo. Christian	11/10/2023	*	21:10	3-6	.500	2-4	.500	0-0	.000	0	1	1	1.0	1	1	1	0	1	8	8.7
vs CSU Pueblo	11/11/2023	*	28:58	0-5	.000	0-4	.000	0-0	.000	0	0	0	0.8	2	0	1	0	3	0	6.5
Southwestern Okla.	11/17/2023	*	28:41	3-5	.600	2-3	.667	2-2	1.000	0	1	1	0.8	2	0	1	0	1	10	7.2
King (TN)	11/18/2023	*	17:19	1-1	1.000	1-1	1.000	0-0	.000	0	1	1	0.8	1	4	0	0	1	3	6.5
at Southern Nazarene	11/25/2023	*	29:59	4-7	.571	2-3	.667	4-4	1.000	0	2	2	1.0	1	0	0	0	2	14	7.6
at Okla. Christian	11/30/2023	*	27:55	1-6	.167	0-2	.000	1-1	1.000	0	2	2	1.1	1	1	2	0	0	3	7.0
at Ark.-Fort Smith	12/02/2023	*	31:30	1-7	.143	0-4	.000	2-2	1.000	1	0	1	1.1	4	0	3	0	0	4	6.7
Tex. A&M Int'l	12/10/2023	*	27:47	3-8	.375	0-3	.000	0-0	.000	1	0	1	1.1	3	0	1	0	3	6	6.6
Tex. A&M-Kingsville	12/12/2023	*	27:27	2-6	.333	0-1	.000	0-0	.000	1	0	1	1.1	0	1	2	0	3	4	6.4
at Cameron	01/04/2024	*	23:07	1-7	.143	1-6	.167	2-2	1.000	0	1	1	1.1	2	1	0	0	0	5	6.3
at Midwestern St.	01/06/2024	*	30:28	1-4	.250	1-2	.500	0-0	.000	0	4	4	1.3	1	1	0	1	1	3	6.0
Totals		13	345:53	23-71	.324	10-37	.270	22-23	.957	5	12	17	1.3	20	14	13	1	17	78	6.0

Player Averages

Games Played	Minutes/ game	Points/ game	FG Pct	3FG Pct	FT Pct	Rebounds/ game	Assists/ game	Turnovers/ game	Assist/Turnover ratio	Steals/ game	Blocks/ game
13	26.6	6.0	32.4	27.0	95.7	1.3	1.1	1.0	1.1	1.3	0.1



2023-24 Lubbock Christian Women's Basketball
Individual Game-by-Game
All games

Page 9/13
as of Jan 10, 2024

#23 MCCOY, Martie

Opponent	Date	GS	MIN	Total		3-Pointers		Free throws		Rebounds				PF	A	TO	BLK	STL	PTS	AVG
				FG-FGA	PCT	3FG-3FGA	PCT	FT-FTA	PCT	OFF	DEF	TOT	AVG							
Union (TN)	11/03/2023	*	25:06	2-4	.500	0-2	.000	0-0	.000	0	3	3	3.0	4	4	1	1	0	4	4.0
Adams St.	11/05/2023	*	31:22	2-6	.333	0-1	.000	1-2	.500	1	4	5	4.0	3	1	0	1	2	5	4.5
at Colo. Christian	11/10/2023	*	25:53	2-4	.500	0-0	.000	2-2	1.000	1	4	5	4.3	3	1	3	0	0	6	5.0
vs CSU Pueblo	11/11/2023	*	08:27	0-2	.000	0-0	.000	0-0	.000	0	0	0	3.3	2	0	1	0	1	0	3.8
Southwestern Okla.	11/17/2023	*	14:47	1-2	.500	0-0	.000	1-1	1.000	0	3	3	3.2	2	0	4	1	0	3	3.6
King (TN)	11/18/2023	*	15:51	1-2	.500	0-0	.000	2-2	1.000	0	3	3	3.2	3	4	1	1	0	4	3.7
at Southern Nazarene	11/25/2023	*	18:24	2-2	1.000	0-0	.000	0-0	.000	1	4	5	3.4	3	0	1	0	0	4	3.7
at Okla. Christian	11/30/2023	*	15:43	1-3	.333	0-0	.000	0-1	.000	1	2	3	3.4	2	1	2	1	1	2	3.5
at Ark.-Fort Smith	12/02/2023	*	22:27	0-2	.000	0-0	.000	2-2	1.000	2	3	5	3.6	3	1	1	0	0	2	3.3
Tex. A&M Int'l	12/10/2023	*	14:46	0-2	.000	0-0	.000	1-2	.500	1	2	3	3.5	5	0	1	0	0	1	3.1
Tex. A&M-Kingsville	12/12/2023	*	22:28	0-3	.000	0-2	.000	0-0	.000	0	6	6	3.7	1	0	2	0	0	0	2.8
at Cameron	01/04/2024	*	18:29	0-3	.000	0-2	.000	1-2	.500	3	3	6	3.9	4	3	1	0	1	1	2.7
at Midwestern St.	01/06/2024	*	01:19	0-0	.000	0-0	.000	0-0	.000	0	0	0	3.6	2	0	0	0	0	0	2.5
Totals		13	235:01	11-35	.314	0-7	.000	10-14	.714	10	37	47	3.6	37	15	18	5	5	32	2.5

Player Averages

Games Played	Minutes/game	Points/game	FG Pct	3FG Pct	FT Pct	Rebounds/game	Assists/game	Turnovers/game	Assist/Turnover ratio	Steals/game	Blocks/game
13	18.1	2.5	31.4	0.0	71.4	3.6	1.2	1.4	0.8	0.4	0.4



2023-24 Lubbock Christian Women's Basketball
Individual Game-by-Game
All games

Page 10/13
as of Jan 10, 2024

#30 SPURGIN, Audrey

Opponent	Date	GS	MIN	Total		3-Pointers		Free throws		Rebounds				PF	A	TO	BLK	STL	PTS	AVG
				FG-FGA	PCT	3FG-3FGA	PCT	FT-FTA	PCT	OFF	DEF	TOT	AVG							
Union (TN)	11/03/2023		05:38	1-3	.333	0-0	.000	2-4	.500	3	1	4	4.0	1	0	1	0	0	4	4.0
Adams St.	11/05/2023		05:31	0-0	.000	0-0	.000	0-0	.000	0	0	0	2.0	3	0	2	0	0	0	2.0
at Colo. Christian	11/10/2023		22:03	2-5	.400	0-0	.000	2-4	.500	0	2	2	2.0	3	0	2	1	1	6	3.3
vs CSU Pueblo	11/11/2023		10:08	2-3	.667	0-0	.000	0-0	.000	0	2	2	2.0	4	0	0	0	0	4	3.5
Southwestern Okla.	11/17/2023		15:24	1-4	.250	0-0	.000	0-0	.000	3	3	6	2.8	0	1	0	0	0	2	3.2
King (TN)	11/18/2023		13:18	2-2	1.000	0-0	.000	4-6	.667	0	3	3	2.8	1	0	0	0	0	8	4.0
at Southern Nazarene	11/25/2023		08:57	1-2	.500	0-0	.000	0-0	.000	0	2	2	2.7	1	0	1	0	0	2	3.7
at Okla. Christian	11/30/2023		12:41	1-2	.500	0-0	.000	0-0	.000	0	0	0	2.4	0	0	0	0	0	2	3.5
at Ark.-Fort Smith	12/02/2023		08:35	1-3	.333	0-0	.000	3-4	.750	0	0	0	2.1	0	0	0	0	0	5	3.7
Tex. A&M Int'l	12/10/2023		12:48	2-2	1.000	0-0	.000	0-0	.000	0	0	0	1.9	2	0	2	0	0	4	3.7
Tex. A&M-Kingsville	12/12/2023		04:33	0-3	.000	0-0	.000	0-2	.000	0	0	0	1.7	0	0	0	0	0	0	3.4
at Cameron	01/04/2024		03:33	0-1	.000	0-0	.000	0-0	.000	0	0	0	1.6	1	0	1	0	0	0	3.1
at Midwestern St.	01/06/2024		23:08	0-1	.000	0-0	.000	0-2	.000	1	5	6	1.9	2	0	3	0	0	0	2.8
Totals		0	146:17	13-31	.419	0-0	.000	11-22	.500	7	18	25	1.9	18	1	12	1	1	37	2.8

Player Averages

Games Played	Minutes/game	Points/game	FG Pct	3FG Pct	FT Pct	Rebounds/game	Assists/game	Turnovers/game	Assist/Turnover ratio	Steals/game	Blocks/game
13	11.3	2.8	41.9	0.0	50.0	1.9	0.1	0.9	0.1	0.1	0.1



2023-24 Lubbock Christian Women's Basketball
Individual Game-by-Game
All games

Page 11/13
as of Jan 10, 2024

#31 JOHNSON, Tia

Opponent	Date	GS	MIN	Total		3-Pointers		Free throws		Rebounds										
				FG-FGA	PCT	3FG-3FGA	PCT	FT-FTA	PCT	OFF	DEF	TOT	AVG	PF	A	TO	BLK	STL	PTS	AVG
at Colo. Christian	11/10/2023		04:23	0-0	.000	0-0	.000	0-0	.000	0	0	0	0.0	0	1	0	0	0	0	0.0
vs CSU Pueblo	11/11/2023		01:37	0-0	.000	0-0	.000	0-0	.000	0	0	0	0.0	0	0	0	0	0	0	0.0
Southwestern Okla.	11/17/2023		02:23	0-0	.000	0-0	.000	0-0	.000	0	0	0	0.0	1	0	3	0	0	0	0.0
King (TN)	11/18/2023		14:03	1-2	.500	0-1	.000	0-0	.000	0	5	5	1.3	2	3	2	0	0	2	0.5
Tex. A&M-Kingsville	12/12/2023		03:24	0-0	.000	0-0	.000	0-0	.000	0	0	0	1.0	0	0	1	0	1	0	0.4
at Cameron	01/04/2024		01:44	0-0	.000	0-0	.000	0-0	.000	0	0	0	0.8	0	0	1	0	0	0	0.3
at Midwestern St.	01/06/2024		00:58	0-0	.000	0-0	.000	0-0	.000	0	0	0	0.7	0	0	0	0	0	0	0.3
Totals		0	28:32	1-2	.500	0-1	.000	0-0	.000	0	5	5	0.7	3	4	7	0	1	2	0.3

Player Averages

Games Played	Minutes/game	Points/game	FG Pct	3FG Pct	FT Pct	Rebounds/game	Assists/game	Turnovers/game	Assist/Turnover ratio	Steals/game	Blocks/game
7	4.1	0.3	50.0	0.0	0.0	0.7	0.6	1.0	0.6	0.1	0.0



2023-24 Lubbock Christian Women's Basketball
Individual Game-by-Game
All games

Page 12/13
as of Jan 10, 2024

#33 JOHNSON, Deja

Opponent	Date	GS	MIN	Total		3-Pointers		Free throws		Rebounds											
				FG-FGA	PCT	3FG-3FGA	PCT	FT-FTA	PCT	OFF	DEF	TOT	AVG	PF	A	TO	BLK	STL	PTS	AVG	
King (TN)	11/18/2023		14:13	3-5	.600	2-4	.500	0-0	.000	0	2	2	2.0	3	0	1	0	1	8	8.0	
at Ark.-Fort Smith	12/02/2023		01:24	0-0	.000	0-0	.000	0-0	.000	0	0	0	1.0	0	0	0	0	0	0	4.0	
Tex. A&M Int'l	12/10/2023		03:01	0-1	.000	0-0	.000	0-0	.000	1	0	1	1.0	1	0	1	0	0	0	2.7	
Tex. A&M-Kingsville	12/12/2023		01:00	0-0	.000	0-0	.000	0-0	.000	0	1	1	1.0	0	0	0	0	0	0	2.0	
at Cameron	01/04/2024		00:51	0-0	.000	0-0	.000	0-0	.000	0	0	0	0.8	0	0	0	0	0	0	1.6	
Totals		0	20:29	3-6	.500	2-4	.500	0-0	.000	1	3	4	0.8	4	0	2	0	1	8	1.6	

Player Averages

Games Played	Minutes/game	Points/game	FG Pct	3FG Pct	FT Pct	Rebounds/game	Assists/game	Turnovers/game	Assist/Turnover ratio	Steals/game	Blocks/game
5	4.1	1.6	50.0	50.0	0.0	0.8	0.0	0.4	0.0	0.2	0.0



2023-24 Lubbock Christian Women's Basketball
Individual Game-by-Game
All games

Page 13/13
as of Jan 10, 2024

#40 SCHUMANN, Reese

Opponent	Date	GS	MIN	Total		3-Pointers		Free throws		Rebounds				PF	A	TO	BLK	STL	PTS	AVG
				FG-FGA	PCT	3FG-3FGA	PCT	FT-FTA	PCT	OFF	DEF	TOT	AVG							
Union (TN)	11/03/2023		05:00	0-0	.000	0-0	.000	2-2	1.000	0	0	0	0.0	0	0	0	0	0	2	2.0
Adams St.	11/05/2023		03:47	0-0	.000	0-0	.000	0-0	.000	0	0	0	0.0	1	0	0	0	0	0	1.0
at Colo. Christian	11/10/2023		09:26	0-1	.000	0-0	.000	0-0	.000	1	1	2	0.7	1	0	0	1	0	0	0.7
vs CSU Pueblo	11/11/2023		22:51	1-3	.333	0-0	.000	1-2	.500	2	1	3	1.3	4	1	0	0	2	3	1.3
Southwestern Okla.	11/17/2023		10:41	1-2	.500	0-0	.000	0-0	.000	1	2	3	1.6	3	1	1	0	0	2	1.4
King (TN)	11/18/2023		13:00	1-3	.333	0-0	.000	1-2	.500	2	1	3	1.8	0	1	3	1	2	3	1.7
at Southern Nazarene	11/25/2023		16:22	1-3	.333	0-0	.000	0-0	.000	1	1	2	1.9	0	1	0	0	1	2	1.7
at Okla. Christian	11/30/2023		17:31	1-2	.500	0-0	.000	3-4	.750	1	2	3	2.0	5	1	3	0	0	5	2.1
at Ark.-Fort Smith	12/02/2023		15:58	0-2	.000	0-0	.000	3-4	.750	3	4	7	2.6	3	2	0	0	0	3	2.2
Tex. A&M Int'l	12/10/2023		11:56	1-1	1.000	0-0	.000	1-3	.333	2	3	5	2.8	5	0	3	0	1	3	2.3
Tex. A&M-Kingsville	12/12/2023		15:52	1-4	.250	0-0	.000	0-0	.000	2	3	5	3.0	0	1	2	0	3	2	2.3
at Cameron	01/04/2024		15:58	4-7	.571	0-0	.000	0-0	.000	2	1	3	3.0	4	0	0	1	0	8	2.8
at Midwestern St.	01/06/2024		18:31	5-8	.625	0-0	.000	0-0	.000	2	3	5	3.2	5	0	0	0	0	10	3.3
Totals		0	176:54	16-36	.444	0-0	.000	11-17	.647	19	22	41	3.2	31	8	12	3	9	43	3.3

Player Averages

Games Played	Minutes/game	Points/game	FG Pct	3FG Pct	FT Pct	Rebounds/game	Assists/game	Turnovers/game	Assist/Turnover ratio	Steals/game	Blocks/game
13	13.6	3.3	44.4	0.0	64.7	3.2	0.6	0.9	0.7	0.7	0.2

LUBBOCK CHRISTIAN UNIVERSITY WOMEN'S BASKETBALL GAME NOTES

Union (TN) vs Lubbock Christian
11/03/23 5:00 pm at Lubbock, TX

Union (TN) 87 • 1-0,0-0 Gulf Sou

#	Player		Total		3-Ptr		Rebounds			PF	TP	A TO		Blk	Stl	Min
			FG-FGA	FG-FGA	FT-FTA	FT-FTA	Off	Def	Tot							
01	Shanique Lucas	g	4-10	1-3	9-10	0	2	2	4	18	2	1	1	1	20	
03	Jazalyn Anousinh	g	1-2	0-0	2-2	1	2	3	4	4	0	3	0	2	22	
04	Macey Lee	g	8-10	3-4	0-0	0	1	1	3	19	0	1	0	1	18	
20	Bethany Dillard	g	1-3	0-2	1-1	0	0	0	1	3	2	2	0	0	15	
24	Olivia Lee	g	1-2	0-0	2-4	0	3	3	0	4	0	2	0	0	12	
11	Brooke Hampel		0-1	0-0	2-4	2	2	4	3	2	4	4	0	0	24	
12	Emma Kallas		3-5	0-0	1-2	0	1	1	3	7	1	3	0	0	19	
13	Lauren West		5-11	5-9	0-0	0	2	2	2	15	2	0	0	0	18	
15	Shylee Morrison		0-1	0-1	2-2	1	0	1	2	2	1	2	0	1	16	
22	Kieli Robinson		2-4	0-0	0-0	3	2	5	3	4	0	0	0	0	11	
32	Leah Cauble		3-8	3-6	0-0	2	4	6	4	9	2	1	1	1	25	
Team						0	1	1								
Totals			28-57	12-25	19-25	9	20	29	29	87	14	19	2	6	200	
1st - FG %:			9-13	69.2%	2nd: 5-14	35.7%	3rd: 8-14	57.1%	4th: 6-16	37.5%	Game: 28-57	49.1%	Deadball			
3FG %:			1-3	33.3%	0-5	0.0%	3-5	60.0%	2-6	33.3%	12-25	48.0%	Rebounds			
FT %:			7-9	77.8%	2-2	100.0%	6-8	75.0%	4-6	66.7%	19-25	76.0%	3			

Lubbock Christian 78 • 0-1,0-0 Lone Sta

#	Player		Total		3-Ptr		Rebounds			PF	TP	A TO		Blk	Stl	Min
			FG-FGA	FG-FGA	FT-FTA	FT-FTA	Off	Def	Tot							
00	Grace Foster	f	7-12	0-2	2-5	1	6	7	3	16	4	8	1	0	31	
23	Martie McCoy	f	2-4	0-2	0-0	0	3	3	4	4	1	1	0	0	25	
02	Maci Maddox	g	8-11	0-0	0-0	0	4	4	4	16	4	4	0	1	39	
12	Taylor Thomas	g	3-5	1-1	2-2	1	2	3	5	9	1	1	0	0	21	
15	Shaylee Stovall	g	2-5	0-1	3-4	2	0	2	1	7	3	1	0	1	24	
01	Kennedy Chappell		1-4	0-2	6-7	1	1	2	2	8	1	0	0	0	21	
03	Audrey Robertson		4-10	1-2	3-4	0	3	3	3	12	2	1	0	3	29	
30	Audrey Spurgin		1-3	0-0	2-4	3	1	4	1	4	0	1	0	0	6	
40	Reese Schumann		0-0	0-0	2-2	0	0	0	0	2	0	0	0	0	4	
Team						1	3	4								
Totals			28-54	2-10	20-28	9	23	32	23	78	19	19	2	5	200	
1st - FG %:			9-14	64.3%	2nd: 6-16	37.5%	3rd: 7-13	53.8%	4th: 6-11	54.5%	Game: 28-54	51.9%	Deadball			
3FG %:			1-3	33.3%	0-2	0.0%	1-3	33.3%	0-2	0.0%	2-10	20.0%	Rebounds			
FT %:			1-2	50.0%	4-8	50.0%	6-8	75.0%	9-10	90.0%	20-28	71.4%	5			

Officials:

Technical fouls: Union (TN)-None. Lubbock Christian-None.

Attendance: 347

2023-24 Women's Basketball. Round: 0. Lubbock Christian vs Union (TN). Played

Score by periods	1st	2nd	3rd	4th	Total
Union (TN)	32	12	25	18	87
Lubbock Christian	20	16	21	21	78

Adams St. vs Lubbock Christian
11/05/23 5:00 pm at Lubbock, TX

Adams St. 65 • 1-1,0-0 RMAC

#	Player		Total		3-Ptr		Rebounds			PF	TP	A TO		Blk	Stl	Min
			FG-FGA	FG-FGA	FT-FTA	FT-FTA	Off	Def	Tot							
22	Christabel Longe	c	6-8	1-1	0-0	4	2	6	3	13	0	2	2	0	18	
01	Harmanie Dominguez	g	6-10	3-4	2-2	0	5	5	4	17	3	1	1	1	36	
11	Elaina Watson		1-3	0-0	4-4	1	4	5	2	6	3	2	0	0	28	
24	Kiiyani Antielu	g	2-6	1-3	0-0	1	3	4	1	5	5	4	0	1	27	
24	Riahana Davis	g	2-9	1-5	3-4	1	4	5	4	8	0	3	0	2	33	
03	Destinee Paulk		0-0	0-0	0-0	0	0	0	0	0	0	1	0	0	4	
05	Kayla Harris		4-11	2-3	2-2	2	6	8	2	12	1	1	1	2	21	
10	Angelline Nageak		0-2	0-1	2-2	0	0	0	3	2	1	2	0	0	18	
14	Nyeniea John		1-2	0-0	0-0	0	2	2	2	2	0	2	0	0	15	
Team						1	0	1								
Totals			22-51	8-17	13-14	10	26	36	21	65	13	19	4	6	200	
1st - FG %:			6-12	50.0%	2nd: 5-13	38.5%	3rd: 7-14	50.0%	4th: 4-12	33.3%	Game: 22-51	43.1%	Deadball			
3FG %:			2-3	66.7%	0-5	0.0%	2-5	40.0%	3-5	60.0%	1-4	25.0%	Rebounds			
FT %:			0-0	0.0%	5-6	83.3%	2-2	100.0%	6-6	100.0%	8-17	47.1%	0			

Lubbock Christian 69 • 1-1,0-0 Lone Sta

#	Player		Total		3-Ptr		Rebounds			PF	TP	A TO		Blk	Stl	Min
			FG-FGA	FG-FGA	FT-FTA	FT-FTA	Off	Def	Tot							
00	Grace Foster	f	6-14	3-6	13-13	0	8	8	1	28	3	3	1	0	39	
23	Martie McCoy	f	2-6	0-1	1-2	1	4	5	3	5	1	0	1	2	31	
02	Maci Maddox	g	6-11	2-3	0-0	0	4	4	1	14	4	2	0	3	40	
03	Audrey Robertson		3-9	0-1	0-0	1	1	2	2	6	1	3	0	1	31	
15	Shaylee Stovall	g	1-4	1-3	8-8	0	0	0	1	11	2	1	0	1	26	
01	Kennedy Chappell		1-2	0-0	0-0	0	0	0	1	2	1	0	0	0	9	
12	Taylor Thomas		1-2	1-1	0-0	0	3	3	1	3	0	1	0	2	14	
30	Audrey Spurgin		0-0	0-0	0-0	0	0	0	3	0	0	2	0	0	6	
40	Reese Schumann		0-0	0-0	0-0	0	0	0	1	0	0	0	0	0	4	
Team						0	0	0								
Totals			20-48	7-15	22-23	2	20	22	14	69	12	12	2	9	200	
1st - FG %:			6-15	40.0%	2nd: 5-9	55.6%	3rd: 4-13	30.8%	4th: 4-12	45.5%	Game: 20-48	41.7%	Deadball			
3FG %:			3-6	50.0%	2-3	66.7%	1-3	33.3%	1-3	33.3%	7-15	46.7%	Rebounds			
FT %:			1-1	100.0%	11-12	91.7%	2-2	100.0%	8-8	100.0%	22-23	95.7%	1			

Officials:

Technical fouls: Adams St.-None. Lubbock Christian-None.

Attendance: 287

2023-24 Women's Basketball. Round: 0. Adams St. vs Lubbock Christian. Played a

Score by periods	1st	2nd	3rd	4th	Total
Adams St.	14	17	19	15	65
Lubbock Christian	16	23	11	19	69

Lubbock Christian vs Colo. Christian
11/10/23 3:00 pm at Lakewood, CO

Lubbock Christian 67 • 2-1,0-0 Lone Sta

#	Player		Total		3-Ptr		Rebounds			PF	TP	A		To	Blk	Stl	Min
			FG-FGA	FG-FGA	FT-FTA	Off	Def	Tot									
00	Grace Foster	f	1-5	0-2	7-8	0	6	6	4	9	0	7	0	0	0	27	
23	Martie McCoy	f	2-4	0-0	2-2	1	4	4	3	6	1	3	0	0	0	27	
02	Maci Maddox	g	4-14	0-2	4-4	1	5	6	3	12	4	1	0	3	45		
03	Audrey Robertson		6-9	2-2	2-2	1	5	6	2	16	3	2	0	1	40		
15	Shaylee Stovall	g	3-6	2-4	0-0	0	1	1	1	8	1	1	0	1	20		
01	Kennedy Chappell		3-4	0-1	4-6	1	2	3	0	10	1	0	0	0	20		
12	Taylor Thomas		0-1	0-1	0-0	0	0	0	0	0	0	2	0	1	11		
30	Audrey Spurgin		2-5	0-0	2-4	0	2	2	3	6	0	2	1	1	22		
31	Tia Johnson		0-0	0-0	0-0	0	0	0	0	0	1	0	0	0	4		
40	Reese Schumann		0-1	0-0	0-0	0	1	1	2	1	0	0	1	0	9		
Team						1	4	5									
Totals			21-49	4-12	21-26	6	30	36	17	67	11	19	2	7	225		
1st - FG %:			6-14	42.9%	2nd: 6-10	60.0%	3rd: 4-12	33.3%	4th: 3-10	30.0%	Game: 21-49		42.9%	Deadball			
3FG %:			2-5	40.0%	1-4	25.0%	1-2	50.0%	0-1	0.0%	4-12		33.3%	Rebounds			
FT %:			0-0	0.0%	5-5	100.0%	5-6	83.3%	21-26	80.8%	3						

Colo. Christian 62 • 0-1,0-0 RMAC

LUBBOCK CHRISTIAN UNIVERSITY WOMEN'S BASKETBALL GAME NOTES

Lubbock Christian vs Ark.-Fort Smith 12/02/23 1:00 pm at Fort Smith, AR

Lubbock Christian 58 • 7-2,2-0 Lone Sta

#	Player	Total			3-Ptr			Rebounds			PF	TP	A	TO	Blk	Stl	Min
		FG-FGA	FG-FGA	FT-FTA	Off	Def	Tot	Off	Def	Tot							
00	Grace Foster	f	4-7	0-3	4-4	0	2	2	2	12	4	2	0	1	31		
23	Martie McCoy	f	0-2	0-0	2-2	2	3	5	3	2	1	1	0	0	23		
02	Maci Maddox	g	7-11	0-2	0-0	0	2	2	2	14	0	4	0	5	40		
03	Audrey Robertson	g	5-9	2-3	6-8	1	3	4	4	18	0	2	0	1	27		
15	Shaylee Stovall	g	1-7	0-4	2-2	1	0	1	4	4	0	3	0	0	31		
01	Kennedy Chappell		0-0	0-0	0-0	0	2	2	1	0	0	1	0	0	11		
11	Taylor Allen		0-0	0-0	0-0	0	0	0	0	0	0	0	0	0	1		
12	Taylor Thomas		0-0	0-0	0-0	0	0	0	1	0	0	2	0	1	10		
30	Audrey Spurgin		1-3	0-0	3-4	0	0	0	0	5	0	0	0	0	9		
33	Deja Johnson		0-0	0-0	0-0	0	0	0	0	0	0	0	0	0	1		
40	Reese Schumann		0-2	0-0	3-4	3	4	7	3	3	2	0	0	0	16		
Team							0	5	5					3			
Totals			18-41	2-12	20-24	7	21	28	20	58	7	18	0	8	200		

1st - FG %:	5-8	62.5%	2nd:	2-14	14.3%	3rd:	6-10	60.0%	4th:	5-9	55.6%	Game:	18-41	43.9%	Deadball	
3FG %:	0-1	0.0%		1-7	14.3%		0-1	0.0%		1-3	33.3%		2-12	16.7%	Rebounds	
FT %:	2-2	100.0%		5-5	100.0%		6-8	75.0%		7-9	77.8%		20-24	83.3%		3

Ark.-Fort Smith 49 • 2-6,0-2 Lone Sta

#	Player	Total			3-Ptr			Rebounds			PF	TP	A	TO	Blk	Stl	Min
		FG-FGA	FG-FGA	FT-FTA	Off	Def	Tot	Off	Def	Tot							
22	Sinetra Jones	c	4-8	0-0	3-5	0	4	4	3	11	0	3	1	1	24		
04	Zyniah Thomas		0-0	0-0	0-0	0	0	0	0	0	0	0	0	0	7		
11	Baylee Fincher	g	5-9	0-4	5-6	1	1	2	2	15	0	3	0	1	36		
20	Morgan Browning	g	2-4	1-3	0-0	1	2	3	3	5	1	3	0	0	31		
21	Hannah Boyett	g	5-12	2-5	2-2	1	0	1	4	14	2	3	0	5	27		
01	Allana Thompson		0-0	0-0	0-0	0	2	2	1	0	0	2	0	0	9		
10	Takaylyn Busby		1-3	1-1	0-0	1	1	2	0	3	1	0	0	0	10		
12	Abby Summitt		0-0	0-0	0-0	0	0	0	0	0	0	0	0	0	3		
14	McKenzie Piper		0-2	0-1	1-4	2	2	4	2	1	0	1	0	1	12		
23	Maija Reed		0-1	0-0	0-0	1	2	3	0	0	2	4	0	0	8		
24	Maja Cykowska		0-1	0-0	0-0	0	2	2	1	0	0	0	0	0	8		
25	Riley Hayes		0-4	0-3	0-0	0	0	0	3	0	1	1	0	0	25		
Team							0	1	1								
Totals			17-44	4-17	11-17	7	17	24	19	49	7	20	1	8	200		

1st - FG %:	5-10	50.0%	2nd:	4-8	50.0%	3rd:	3-10	30.0%	4th:	5-16	31.3%	Game:	17-44	38.6%	Deadball	
3FG %:	1-5	20.0%		2-3	66.7%		0-4	0.0%		1-5	20.0%		4-17	23.5%	Rebounds	
FT %:	0-0	0.0%		3-5	60.0%		0-0	0.0%		8-12	66.7%		11-17	64.7%		5

Officials: LeAndre Benton,Rebekah Carpenter,Teddy Gonzales
Technical fouls: Lubbock Christian-None. Ark.-Fort Smith-None.
Attendance: 138
2023-24 Women's Basketball. Round: 0. Ark.-Fort Smith vs Lubbock Christian, PI

Score by periods	1st	2nd	3rd	4th	Total
Lubbock Christian	12	10	18	18	58
Ark.-Fort Smith	11	13	6	19	49

Tex. A&M Int'l vs Lubbock Christian 12/10/23 1:00 pm at Lubbock, TX

Tex. A&M Int'l 65 • 9-1,2-1 Lone Sta

#	Player	Total			3-Ptr			Rebounds			PF	TP	A	TO	Blk	Stl	Min
		FG-FGA	FG-FGA	FT-FTA	Off	Def	Tot	Off	Def	Tot							
44	Raiana Brown	f	5-11	0-0	3-4	5	2	7	5	13	0	4	0	2	28		
04	Marija Bakic	g	2-3	0-0	1-2	0	3	3	2	5	0	3	0	0	9		
02	Samiyah Worrell	*	0-6	0-5	0-0	0	4	4	3	0	1	1	0	0	27		
15	Malea Jackson	*	5-8	2-5	4-4	1	1	2	2	16	0	2	0	2	38		
30	Angelique Morgan	*	2-3	0-0	3-4	0	0	0	0	7	1	2	0	0	10		
01	Brigitte Tello		0-1	0-0	0-0	1	3	4	1	0	0	1	0	1	16		
03	Ngozi Obineke		4-8	2-2	2-2	5	8	13	4	12	3	5	0	1	34		
05	Telisha Brown		2-9	0-3	4-7	0	1	1	4	8	3	0	0	2	24		
12	Kayla Herrera		1-2	0-1	0-0	0	0	0	1	2	0	3	0	1	6		
14	Riley Long		1-3	0-1	0-2	1	2	3	0	2	0	0	0	0	6		
35	Madeline Fisher		0-2	0-1	0-0	0	0	0	0	0	0	0	0	0	2		
Team							1	0	1								
Totals			22-56	4-18	17-25	14	24	38	22	65	8	21	0	9	200		

1st - FG %:	2-11	18.2%	2nd:	7-16	43.8%	3rd:	8-16	50.0%	4th:	5-13	38.5%	Game:	22-56	39.3%	Deadball	
3FG %:	0-5	0.0%		2-5	40.0%		1-3	33.3%		1-5	20.0%		4-18	22.2%	Rebounds	
FT %:	5-9	55.6%		0-0	0.0%		5-6	83.3%		7-10	70.0%		17-25	68.0%		6

Lubbock Christian 60 • 7-3,2-1 Lone Sta

#	Player	Total			3-Ptr			Rebounds			PF	TP	A	TO	Blk	Stl	Min
		FG-FGA	FG-FGA	FT-FTA	Off	Def	Tot	Off	Def	Tot							
00	Grace Foster	f	8-13	5-7	6-7	1	4	5	0	27	3	2	2	1	33		
23	Martie McCoy	f	0-2	0-0	1-2	1	2	3	5	1	0	1	0	0	15		
02	Maci Maddox	g	2-11	0-0	0-0	0	3	3	0	4	7	5	0	1	35		
03	Audrey Robertson	g	4-8	0-3	1-2	2	2	4	3	9	1	5	0	1	32		
15	Shaylee Stovall	g	3-8	0-3	0-0	1	0	1	3	6	0	1	0	3	27		
11	Kennedy Chappell		0-0	0-0	2-4	0	1	1	0	2	2	1	0	0	10		
11	Taylor Allen		1-1	0-0	0-0	0	0	0	0	2	0	1	0	1	6		
12	Taylor Thomas		0-2	0-1	2-2	0	2	2	0	2	1	0	0	0	14		
30	Audrey Spurgin		2-2	0-0	0-0	0	0	0	2	4	0	2	0	0	13		
33	Deja Johnson		0-1	0-0	0-0	1	0	1	1	0	0	1	0	0	3		
40	Reese Schumann		1-1	0-0	1-3	2	3	5	5	3	0	3	0	1	12		
Team							0	5	5								
Totals			21-49	5-14	13-20	8	22	30	19	60	14	24	2	8	200		

1st - FG %:	5-9	55.6%	2nd:	6-13	46.2%	3rd:	5-9	55.6%	4th:	5-18	27.8%	Game:	21-49	42.9%	Deadball	
3FG %:	1-2	50.0%		2-3	66.7%		3-3	66.7%		0-6	0.0%		5-14	35.7%	Rebounds	
FT %:	6-8	75.0%		0-1	0.0%		3-5	60.0%		4-6	66.7%		13-20	65.0%		3

Officials:
Technical fouls: Tex. A&M Int'l-None. Lubbock Christian-None.
Attendance: 301
2023-24 Women's Basketball. Round: 0. Lubbock Christian vs Tex. A&M Int'l. Pia

Score by periods	1st	2nd	3rd	4th	Total
Tex. A&M Int'l	9	16	22	18	65
Lubbock Christian	17	14	15	14	60

Last FG - TAMU 4th-03:57, LCU 4th-00:08.
Largest lead - TAMU by 7 4th-00:24, LCU by 15 2nd-04:02.
TAMU led for 10:35. LCU led for 27:08. Game was tied for 02:17.

Lubbock Christian vs Cameron 01/04/24 5:30 pm at Lawton, OK

Lubbock Christian 63 • 9-3,4-1 Lone Sta

#	Player		Total			3-Ptr			Rebounds			PF	TP	A	TO	Blk	Stl	Min
			FG-FGA	FG-FGA	FT-FTA	Off	Def	Tot	Off	Def	Tot							
00	Grace Foster	f	8-17	1-5	1-1	0	9	9	2	18	3	2	0	0	0	37		
23	Martie McCoy	f	0-3	0-2	1-2	3	3	6	4	1	3	1	0	1	18			
02	Maci Maddox	g	4-10	3-6	2-2	1	0	1	0	13	5	1	0	1	38			
03	Audrey Robertson	g	4-9	2-3	0-0	2	2	4	1	10	2	1	0	0	32			
15	Shaylee Stovall	g	1-7	1-6	2-2	0	1	1	2	5	1	0	0	0	22			
01	Kennedy Chappell		2-2	2-2	0-0	1	3	4	1	6	0	0	1	0	14			
11	Taylor Allen		0-0	0-0	0-0	0	1	1	0	0	0	0	0	0	4			
12	Taylor Thomas		1-5	0-2	0-0	1	0	1	0	2	0	0	0	0	13			
30	Audrey Spurgin		0-1	0-0	0-0	0	0	0	1	0	0	1	0	0	3			
31	Tia Johnson		0-0	0-0	0-0	0	0	0	0	0	0	0	0	0	2			
33	Deja Johnson		0-0	0-0	0-0	0	0	0	0	0	0	0	0	0	1			
40	Reese Schumann		4-7	0-0	0-0	2	1	3	4	8	0	0	1	0	16			
	Team					0	0	0										
Totals			24-61	9-26	6-7	10	20	30	16	63	14	7	2	2	200			
1st - FG %:			6-18	33.3%	2nd: 5-15	33.3%	3rd: 6-15	40.0%	4th: 7-13	53.8%	Game: 24-61			39.3%	Deadball Rebounds			
			3-8	37.5%	1-7	14.3%	3-7	42.9%	9-26	34.6%								
			FT %:	3-4	75.0%	0-0	0.0%	2-2	100.0%	1-1	100.0%	6-7			85.7%	2,2		

LUBBOCK CHRISTIAN UNIVERSITY WOMEN'S BASKETBALL GAME NOTES

Lubbock Christian vs Midwestern St.
01/06/24 1:00 pm at Wichita Falls, TX

Lubbock Christian 68 • 10-3,5-1 Lone St

#	Player		Total			3-Ptr			Rebounds			PF	TP	A	TO	Blk	Stl	Min
			FG-FGA	FG-FGA	FT-FTA	Off	Def	Tot	Off	Def	Tot							
00	Grace Foster	f	8-14	3-6	2-2	0	9	9	2	21	6	5	0	0	0	43		
23	Martie McCoy	f	0-0	0-0	0-0	0	0	0	2	0	0	0	0	0	0	1		
02	Maci Maddox	g	4-11	3-4	2-4	0	8	8	1	13	7	2	0	0	0	44		
03	Audrey Robertson	g	8-16	1-4	1-2	4	3	7	1	18	3	3	0	0	0	36		
15	Shaylee Stovall	g	1-4	1-2	0-0	0	4	4	1	3	1	0	1	1	1	31		
01	Kennedy Chappell		1-2	1-1	0-0	0	4	4	1	3	1	2	0	0	0	14		
11	Taylor Allen		0-1	0-0	0-0	0	0	0	0	0	0	0	1	0	0	3		
12	Taylor Thomas		0-1	0-0	0-0	0	0	0	1	0	0	0	1	0	0	10		
30	Audrey Spurgin		0-1	0-0	0-2	1	5	6	2	0	0	3	0	0	0	23		
31	Tia Johnson		0-0	0-0	0-0	0	0	0	0	0	0	0	0	0	0	1		
40	Reese Schumann		5-8	0-0	0-0	2	3	5	5	10	0	0	0	0	0	19		
Team						1	2	3					1					
Totals				27-58	9-17	5-10	8	38	46	16	68	18	18	1	1	1	225	
1st - FG %: 11-12 91.7% 2nd: 5-15 33.3% 3rd: 6-15 40.0% 4th: 2-11 18.2% Game: 27-58 46.6% Deadball Rebounds 2																		
3FG %: 5-6 83.3% 1-3 33.3% 1-4 25.0% 1-3 33.3% 9-17 52.9%																		
FT %: 0-0 0.0% 0-2 0.0% 0-0 0.0% 3-4 75.0% 5-10 50.0%																		

Midwestern St. 61 • 3-10,3-4 Lone St

#	Player		Total		3-Ptr		Rebounds			PF	TP	A	TO	Blk	Stl	Min
			FG	FGA	FG	FGA	FT	FTA	Off							
00	Zarria Carter	f	11-28	0-0	1-1		9	5	14	3	23	2	1	1	2	42
10	Makayla Coy	f	2-6	0-0	2-2		3	7	10	0	6	1	0	0	2	32
22	Kertisa Amos	f	10-24	0-0	4-5		2	8	10	3	24	3	3	0	3	40
01	Eternity Jackson		0-3	0-2	0-0		0	2	2	1	0	1	0	0	0	24
11	Catalina Cortez	g	1-9	1-7	0-0		1	0	1	3	3	1	1	0	0	42
05	Zionna Barbee		0-1	0-0	0-0		1	1	2	0	0	0	0	0	0	10
12	Markayla Johnson		0-0	0-0	0-0		0	0	0	0	0	0	0	0	0	1
13	Kyla Speights		0-0	0-0	0-2		0	0	0	0	0	0	0	0	0	3
23	Nikki Green		1-8	1-6	2-2		0	1	1	2	5	3	0	2	0	28
25	Keara Felix		0-3	0-0	0-0		1	1	2	1	0	1	0	0	0	3
Team							3	1	4				1			
Totals				25-82	2-15	9-12	20	26	46	13	61	12	6	3	7	225
1st - FG %: 6-17 35.3% 2nd: 5-16 31.3% 3rd: 5-20 25.0% 4th: 8-20 40.0% Game: 25-82 30.5% Deadball Rebounds 2																
3FG %: 0-2 0.0% 0-2 0.0% 1-5 20.0% 1-3 33.3% 2-15 13.3%																
FT %: 0-2 0.0% 5-6 83.3% 2-2 100.0% 2-2 100.0% 9-12 75.0%																

Officials: Paige Parliament,Tommy Procise,Chet Martin.
Technical fouls: Lubbock Christian-None, Midwestern St.-None.
Attendance: 562
2023-24 Women's Basketball, Round: 0, Lubbock Christian vs Midwestern St., Pla

Score by periods	1st	2nd	3rd	4th	OT	Total						
Lubbock Christian	27	11	13	8	9	68	Points	In	Off	2nd	Fast	
Midwestern St.	12	15	13	19	2	61	LCU	30	6	4	10	Bench
							MSU	28	17	15	6	13

Last FG - LCU OT-01:09, MSU OT-03:14.
Largest lead - LCU by 15 1st-01:13, MSU by 2 1st-08:30.
LCU led for 37:51, MSU led for 01:32. Game was tied for 05:37.
Score tied - 5 times.
Lead changed - 6 times.

OPPONENT BREAKDOWN

Texas-Permian Basin (10-2, 5-1)



Location: Odessa, Texas

Enrollment: 6,063

Head Coach: Rae Boothe

Assistant Coaches: Yazmin Batch,
Ericka Torres

ALL-TIME MEETINGS (28-0)

Date	Winner	Score
11/11/02	LCU (H)	86-50
11/18/02	LCU (A)	91-44
11/13/03	LCU (H)	84-68
11/17/03	LCU (A)	84-67
11/9/04	LCU (H)	99-63
11/22/04	LCU (A)	98-55
11/7/05	LCU (H)	86-41
12/2/06	LCU (H)	92-40
12/12/06	LCU (H)	90-47
11/7/11	LCU (H)	69-56
11/1/12	LCU (H)	79-59
1/11/14	LCU (A)	88-79
2/22/14	LCU (H)	90-77
1/22/15	LCU (A)	89-76
1/21/15	LCU (A)	88-53
1/21/16	LCU (H)	70-34
2/20/16	LCU (A)	109-56
3/3/16	LCU (T1)	79-33
11/19/16	LCU (H)	61-37
11/18/17	LCU (H)	72-34
11/17/18	LCU (H)	82-39
2/4/19	LCU (H)	94-49
2/27/20	LCU (A)	75-44
2/19/21	LCU (A)	74-43
2/21/21	LCU (H)	72-48
1/29/22	LCU (A)	83-61
1/5/23	LCU (A)	73-60
2/4/23	LCU (H)	70-50

H - Home Team Won

A - Away Team Won

N1 - Heartland Conference Tournament (Tulsa, Okla.)

ROSTER

No.	Name	HT	YR	PT	Hometown - Last School
0	Kamryn Lemon	5-8	GS	G	Sumter, S.C. - Long Beach State
1	Andreea Mancha*	5-5	SR	G	Alvin, Texas - Hill College
2	Tamia Flores	5-8	SO	G	Dallas, Texas - Pinkston HS
3	Ariyel Gordon	5-7	FR-R	G	San Antonio, Texas - Harlan HS
4	Kamari Portalis*	5-8	JR	G	Magnolia, Texas - Magnolia West HS
5	Marisa Seaton*	5-9	SO	G	San Antonio, Texas - Brandeis HS
10	Avalon Munoz*	5-5	JR	G	San Antonio, Texas - Edison HS
11	Morgan Helgesen*	6-1	JR	F	Denton, Texas - Guyer HS
12	Makala Bingley*	5-10	SO	F	Tasmania, Australia - Kings Meadow HS
13	Diavian Spencer*	5-6	JR	G	Arlington, Texas - Arlington Martin HS
15	Holly Hemmeline*	5-7	SR	G	Denver City, Texas - Denver City HS
20	Mikalsh Buckley	5-6	FR	G	Austin, Texas - Hendrickson HS
21	Ally Haman*	5-9	SR	G	Cypress, Texas - Cy Creek HS
22	Khiara Flugence*	6-0	SO	F	San Antonio, Texas - Champion HS
23	Alexus Quaadman*	6-1	GS	P	Las Vegas, Nev. - Spring Valley HS
32	Chayse Goetz	5-11	FR	F	New Braunfels, Texas - Canyon HS
33	Jayda Reece	5-7	FR	G	Memphis, Tenn. - Samuel B. Clemens HS

*Returning Letterwinners

TEAM STATISTICS

Game Records

Record	Overall	Home	Away	Neutral
ALL GAMES	10-2	6-0	1-2	3-0
CONFERENCE	5-1	4-0	1-1	0-0
NON-CONFERENCE	5-1	2-0	0-1	3-0

Score by Periods

Team	1st	2nd	3rd	4th	OT	TOT
Tex. Permian Basin	224	202	228	247	0	901
Opponents	185	184	176	215	0	760

Team Box Score

No.	Player					Total		3-Point		F-Throw		Rebounds											
		GP-GS	MIN	AVG		FG-FGA	FG%	3FG-3FGA	3FG%	FT-FTA	FT%	OFF	DEF	TOT	AVG	PF	DQ	A	TO	BLK	STL	PTS	AVG
0	LEMON, Kamryn	11-9	267:05	24.3		56-99	.566	4-12	.333	32-37	.865	11	37	48	4.4	26	0	38	31	0	22	148	13.5
1	MANCHA, Andreea	12-12	343:15	28.6		49-124	.395	29-75	.387	30-41	.732	10	28	38	3.2	25	0	35	30	3	16	157	13.1
23	QUAADMAN, Alexis	12-12	298:11	24.8		50-84	.595	1-1	1.000	46-72	.639	53	82	135	11.3	36	0	18	18	10	13	147	12.3
10	MUNOZ, Avalon	12-12	361:29	30.1		32-93	.344	7-25	.280	38-51	.745	19	21	40	3.3	29	0	34	34	1	31	109	9.1
11	HELGESEN, Morgan	12-8	292:19	24.4		36-102	.353	13-52	.250	9-14	.643	21	31	52	4.3	20	0	21	11	3	14	94	7.8
12	BINGLEY, Makayla	11-5	260:26	23.7		25-60	.417	14-37	.378	9-10	.900	5	14	19	1.7	26	1	8	14	1	11	73	6.6
15	HEMMELINE, Holly	12-1	198:50	16.6		25-70	.357	18-55	.327	4-8	.500	9	9	18	1.5	12	0	11	8	1	9	72	6.0
22	FLUGENCE, Khiara	12-0	167:12	13.9		20-37	.541	0-1	.000	7-21	.333	23	17	40	3.3	22	0	3	7	4	15	47	3.9
20	BUCKLEY, Mikalah	3-0	15:33	5.2		3-3	1.000	1-1	1.000	0-0	.000	1	2	3	1.0	2	0	1	2	0	0	7	2.3
2	FLORES, Tamia	12-0	60:44	5.1		7-18	.389	2-11	.182	7-8	.875	4	3	7	0.6	9	0	1	7	0	1	23	1.9
13	SPENCER, Diavian	12-1	100:36	8.4		7-35	.200	2-14	.143	2-3	.667	2	2	4	0.3	9	0	11	11	0	5	18	1.5
5	SEATON, Marisa	4-0	23:38	5.9		2-5	.400	0-3	.000	0-0	.000	1	5	6	1.5	1	0	6	2	0	5	4	1.0
33	REECE, Jayda	3-0	10:42	3.6		1-2	.500	0-0	.000	0-0	.000	0	0	0	0.0	0	0	1	2	0	0	2	0.7
Team												11	22	33				8					
Total		12	2400			313-732	.428	91-287	.317	184-265	.694	170	273	443	36.9	217	1	188	185	23	142	901	75.1
Opponents		12	2400			262-663	.395	85-300	.283	151-201	.751	136	275	411	34.3	264	5	150	240	14	96	760	63.3

2023-2024 RESULTS

Date	Opponent	Score
11/10/2023	vs South Dakota Mines	W 60-55
11/11/2023	at Colorado Mesa	L 54-70
11/17/2023	vs King (TN)	W 95-52
11/18/2023	vs Southwestern Okla.	W 72-65
11/21/2023	Sul Ross St.	W 108-81
11/30/2023	at Tex. A&M Int'l	L 78-84
12/02/2023	at Tex. A&M-Kingsville	W 77-60
12/07/2023	Okla. Christian	W 71-61
12/09/2023	Ark.-Fort Smith	W 70-68
12/15/2023	Northern N.M.	W 85-52
01/04/2024	Eastern N.M.	W 59-57
01/06/2024	Western N.M.	W 72-55

OPPONENT BREAKDOWN

Angelo State (11-4, 5-1)



Location: San Angelo, Texas

Enrollment: 10,775

Head Coach: Alesha Ellis

Assistant Coach: Andy Ellis, Maci Thrans

ALL-TIME MEETINGS (LCU leads 16-6)

Date	Winner	Score
12/5/80	Angelo State (N)	82-42
11/25/91	LCU (H)	85-52
11/21/92	LCU (H)	80-59
12/1/92	Angelo State (H)	75-59
11/13/98	LCU (A)	75-62
12/11/98	LCU (H)	90-57
12/29/00	Angelo State (A)	62-56
11/30/01	LCU (A)	78-75
11/6/12	LCU* (A)	83-65
11/24/14	LCU (A)	71-57
3/11/16	LCU (H1)	101-72
3/10/18	LCU (H1)	61-59
3/19/19	LCU (H1)	76-70
11/23/19	LCU (A)	75-64
1/11/20	LCU (H)	69-52
3/5/20	LCU (L1)	91-65
1/14/21	LCU (A)	65-55
1/16/21	LCU (H)	77-46
1/27/21	ASU (H)	67-63
3/4/22	LCU (L1)	60-51
1/7/23	ASU (H)	53-51
2/2/23	ASU (A)	60-57

*EXHIBITION GAME FOR ASU

(H) - Won by the home team

(A) - Won by the visiting team

(H1) - NCAA Div. II South Central Region Tournament (Lubbock, Texas)

(L1) - Lone Star Conference Championships (Frisco, Texas)

ROSTER

#	Name	Pos.	Ht.	Yr.	Hometown/Previous School
00	Landry Morrow	G	5-8	So.	Ackerly, Texas / Sands HS
1	Madisen Honea	G	5-7	Jr.	Copperas Cove, Texas / Copperas Cove HS
2	Blakely Gerber	G	6-0	Sr.	Nazareth, Texas / Wayland Baptist
3	Briley Merket	G	5-11	So.	Canadian, Texas / Canadian HS
4	Abbie Crow	G	5-9	So.	Lubbock, Texas / Lubbock Christian
5	Peyton Stellato	G	5-10	Fr.	Fort Worth, Texas / All Saints Episcopal School
10	Sawyer Lloyd	G	5-9	Sr.	Wall, Texas / Wall HS
11	Madi Lumsden	G	5-8	Fr.	Argyle, Texas
12	Madeline Stephens	F	6-1	Jr.	Lubbock, Texas / Lubbock Monterey HS
13	Keniah Williams	C	6-4	So.	Georgetown, Texas / Georgetown HS
22	Olivia Pedigo	F	6-0	So.	Bells, Texas / Bells HS
24	Alexandra Bednarczyk	F	6-0	So.	Baldwinsville, Ny / Charles W. Baker HS
30	Aicha Ndir	F	6-0	So.	Blois, France
32	Tayjanna McGhee-Pleasant	F	6-3	Sr.	Amarillo, Texas / Wayland Baptist

TEAM STATISTICS

Game Records

Record	Overall	Home	Away	Neutral
ALL GAMES	11-4	4-2	3-0	4-2
CONFERENCE	5-1	3-1	2-0	0-0
NON-CONFERENCE	6-3	1-1	1-0	4-2

Score by Periods

Team	1st	2nd	3rd	4th	OT	TOT
Angelo St.	278	243	277	286	0	1084
Opponents	228	238	274	250	0	990

Team Box Score

No.	Player	GP-GS	MIN	AVG	FG-FGA	FG%	3FG-3FGA	3FG%	FT-FTA	FT%	OFF	DEF	TOT	AVG	PF	DQ	A	TO	BLK	STL	PTS	AVG
32	MCGHEE-PLEASANT, Tayjanna	15-15	420:49	28.1	92-213	.432	15-56	.268	55-69	.797	29	103	132	8.8	30	1	20	41	13	10	254	16.9
10	LLOYD, Sawyer	15-15	484:56	32.3	90-201	.448	21-61	.344	29-34	.853	23	73	96	6.4	38	1	81	36	4	38	230	15.3
12	STEPHENS, Madeline	15-15	422:11	28.1	72-144	.500	8-20	.400	31-50	.620	29	73	102	6.8	32	0	29	27	9	21	183	12.2
13	WILLIAMS, Keniah	15-0	198:53	13.3	47-99	.475	1-2	.500	13-31	.419	22	41	63	4.2	22	0	4	23	32	4	108	7.2
00	MORROW, Landry	14-14	409:34	29.3	29-73	.397	13-41	.317	11-15	.733	5	42	47	3.4	30	0	61	29	1	16	82	5.9
2	GERBER, Blakely	4-3	54:20	13.6	9-15	.600	0-1	.000	3-5	.600	4	4	8	2.0	7	0	4	8	0	0	21	5.3
3	MERKET, Briley	15-0	276:33	18.4	20-83	.241	9-44	.205	15-17	.882	9	13	22	1.5	18	0	21	13	0	12	64	4.3
11	LUMSDEN, Madi	15-1	211:06	14.1	14-47	.298	11-34	.324	9-12	.750	5	25	30	2.0	25	0	11	27	1	8	48	3.2
1	HONEA, Madisen	15-9	257:26	17.2	17-55	.309	8-29	.276	6-10	.600	10	9	19	1.3	18	0	15	17	0	12	48	3.2
24	BEDNARCZYK, Alexandra	12-0	67:46	5.6	9-27	.333	0-1	.000	2-2	1.000	6	7	13	1.1	19	1	1	7	1	1	20	1.7
30	NDIR, Aicha	14-3	149:40	10.7	8-28	.286	0-4	.000	4-14	.286	13	21	34	2.4	18	0	10	18	7	5	20	1.4
22	PEDIGO, Olivia	10-0	46:46	4.7	2-12	.167	2-4	.500	0-0	.000	2	3	5	0.5	11	0	4	4	0	0	6	0.6
Team											31	23	54					9				
Total		15	3000		409-997	.410	88-297	.296	178-259	.687	188	437	625	41.7	268	3	261	259	68	127	1084	72.3
Opponents		15	3000		336-894	.376	92-315	.292	226-314	.720	146	421	567	37.8	232	3	173	276	34	138	990	66.0

2023-2024 RESULTS

Date	Opponent	Score
11/03/2023	vs Mary	L 67-81
11/04/2023	vs Gannon	L 63-76
11/05/2023	vs Minot St.	W 83-68
11/10/2023	vs MSU Denver	W 64-39
11/11/2023	vs Western Colo.	W 64-55
11/24/2023	Mo. Southern St.	W 80-61
11/25/2023	Tampa	L 53-63
11/30/2023	at Tex. A&M-Kingsville	W 66-65
12/02/2023	at Tex. A&M Int'l	W 95-74
12/07/2023	Ark.-Fort Smith	L 64-75
12/09/2023	Okla. Christian	W 81-69
12/15/2023	vs Bridgewater St.	W 88-79
12/16/2023	at Hawaii Hilo	W 69-62
01/04/2024	Western N.M.	W 81-68
01/06/2024	Eastern N.M.	W 66-55

SINGLE GAME TEAM RECORDS

Points Scored:	
Lady Chaps:	125 vs Whittier College (12/28/94)
Opponents:	110 Panhandle State (2/11/93)
Individual:	38 Beth Capps (1/22/96)
Field Goals Made:	
Lady Chaps:	52 vs Whittier College (1/28/94)
Opponents:	44 Midwestern State (1/9/87)
Individual:	16 Nettie Gilbreath (1/10/87), Beth Capps (11/22/96 & 2/1/96)
Field Goals Attempted:	
Lady Chaps:	94 vs McMurry (2/26/82)
Opponents:	95 Bishop College (1/7/82)
Individual:	29 Beth Capps (2/1/96)
Field Goal Percentage:	
Lady Chaps:	.692 (36-52) vs Eastern New Mexico (11/29/14)
Opponents:	.714 Panhandle State (1/15/90)
Three Pointers Made:	
Lady Chaps:	18 vs Oklahoma Panhandle State (2/18/17)
Opponents:	16 Cameron (12/19/19)
Individual:	8 - Ashton Duncan & (1/22/22) & (12/11/20), Bailey Haist (1/2/17)
Three Pointers Attempted:	
Lady Chaps:	44 vs Oklahoma City (12/10/15)
Opponents:	41 Whittier College (12/28/94)
Individual:	19 Burgundy Bass (1/18/90)
Three Pointer Percentage:	
Lady Chaps:	.667 (12-18) vs Western New Mexico (11/17/17)
Opponents:	.722 (13-18) Texas Woman's (3/4/23)
Free Throws Made:	
Lady Chaps:	40 vs Panhandle State (1/26/84)
Opponents:	38 St. Gregory's (2/2/02)
Individual:	15 Nicole Hampton (1/14/16)
Free Throws Attempted:	
Lady Chaps:	51 vs Panhandle State (2/11/93)
Opponents:	46 - 2 times
Individual:	17 Becky Hinojos (2/11/93), Mamy N'Kolomoni (3/1/02) and Nicole Hampton (1/14/16)
Free Throw Percentage:	
Lady Chaps:	1.000 (22-22) vs. Newman (2/15/18)
Opponents:	1.000 (21-21) St. Edward's (2/25/17)
Individual:	1.000 (14-14) Nicole Hampton (1/16/14)
Rebounds:	
Lady Chaps:	73 - 2 times (last: vs. Dallas Christian 12/31/09)
Opponents:	73 McMurry (1/23/82)
Individual:	20 Mamy N'Kolomoni (2/24/01)
Assists:	
Lady Chaps:	39 vs McMurry (1/17/89)
Opponents:	29 McMurry (1/11/88)
Individual:	13 Sierra Lovorn (2/10/07)
Steals:	
Lady Chaps:	38 vs McMurry (11/12/91)
Opponents:	27 St. Edwards (11/13/87)
Individual:	12 Tina Phillips (11/12/91)
Blocks:	
Lady Chaps:	17 vs. Okla. Panhandle St. (1/19/15) vs. Hardin-Simmons (2/19/91)
Individual:	10 Tess Bruffey - 3 times (12/13/14, 11/26/16, 2/9/17)
Turnovers:	
Lady Chaps:	40 vs. McMurry (2/23/80)
Opoonents:	41 Howard Payne (11/12/90)

RIP GRIFFIN CENTER RECORDS

Lady Chap Team Records

Points:	113 vs Northern New Mexico (11/7/09)
Field Goals:	49 vs Dallas Christian (11/4/08)
Field Goals Att.:	91 vs Huston-Tillotson (11/17/00)
Field Goal Pct.:	.692 vs Eastern New Mexico (36-52) (11/29/14)
3-Pointers:	18 vs Oklahoma Panhandle State (2/18/17)
3-Pointers Att.:	44 vs Oklahoma City (12/10/15)
3-Pointers Pct.:	.667 vs USAO (2/28/08) .667 vs Texas - Permian Basin (2/21/15) .667 vs. Western New Mexico (11/17/17)
Free Throws:	35 vs Rogers State (1/19/12)
Free Throw Att.:	44 vs Oklahoma Baptist (2/1/03)
Free Throw Pct.:	1.000 vs Newman (22-22) (2/15/18)
Rebounds:	62 vs Huston-Tillotson (11/17/00)
Assists:	34 vs Dallas Christian (11/4/08)
Blocked Shots:	14 vs Mid-America Christian (11/24/14)
Steals:	26 vs National Christian (12/8/01)

Lady Chap Individual Records

Points:	36 - Emily Pool (Atkins) vs Northern New Mexico College (11/5/10)
Field Goals:	13 - Mamy N'Kolomoni vs Huston-Tillotson (11/17/00)
Field Goals Att.:	22 - Cari Bigham vs UTPB
Field Goal Pct. (10 attempts):	.917 - Brittany Blackmon (11-12) vs Univ. of the Southwest (11/10/08)
3-Pointers:	8 - Ashton Duncan (twice) vs St. Mary's (1/22/22) & (12/11/20)
3-Pointers Att.:	13 - Ashton Duncan vs. St. Mary's (1/22/22)
3-Point Pct. (5 attempts):	1.000 - Kelsey Hoppel (5-5) vs Okla. Christian (2/8/14) 1.000 - Bailey Haist (5-5) vs. St. Edward's (2/19/15)
Free Throws:	13 - Grace Foster (11/5/23 vs. Adams State)
Free Throws Att.:	17 - Mamy N'Kolomoni vs Southern Nazarene (3/1/02)
Free Throw Pct. (10 attempts):	1.00 - Grace Foster (13-13) vs. Adams St. (11/5/23) 1.00 - Laynee Burr (12-12) vs. Midwestern St. (2/4/22) 1.00 - Tabitha Qubty-Sellers (10-10) vs Okla. Christian (1/18/01) 1.00 - Emily Pool (10-10) vs. Newman (11/23/13) 1.00 - Allie Schulte (10-10) vs. Daemen (11/20/21)
Rebounds:	20 - Mamy N'Kolomoni vs St. Gregory's (2/24/01)
Assists:	13 - Sierra Lovorn vs Oklahoma Baptist (2/10/07)
Blocked Shots:	10 - Tess Bruffey vs. St. Mary's (2/9/17)

SINGLE-SEASON RECORDS

Points Scored:

657	Beth Capps	1996-97
575	Grace Foster	2022-23
574	Beth Capps	1995-96
562	Kelsey Canavan	2011-12
560	Jordan Hampton	2006-07

Points Per Game Average:

22.7	Beth Capps	1996-97
20.0	Kechia Mason	1997-98
19.9	Burgundy Bass	1989-90
18.7	Nettie Gilbreath	1986-87

Field Goals Attempted:

516	Tonya Ivie	1981-82
492	Beth Capps	1995-96
435	Darla Lynch	1980-81
429	Kelsey Canavan	2011-12
425	Beth Capps	1996-97

Field Goals Made:

237	Beth Capps	1996-97
236	Kelsey Canavan	2011-12
217	Tonya Ivie	1981-82
210	Beth Capps	1995-96
202	Mamy N'Kolomoni	2000-01

Field Goal Percentage (Min. 300 Att.):

.580	Nicole Hampton	2015-16
.561	Roberta Ross	1986-87
.558	Beth Capps	1996-97
.556	Tess Bruffey	2015-16
.554	Carol Hise	1990-91

Assists:

221	Krista Lent	1990-91
211	Nicole Hampton	2015-16
197	Sierra Lovorn	2007-08
192	Nicole Hampton	2012-13
189	Krista Lent	1989-90

Three Pointers Attempted:

240	Ashton Duncan	2021-22
216	Kelsey Hoppel	2015-16
203	Angie Taylor	1997-98
191	Ashton Duncan	2021-22
188	Sierra Lovorn	2007-08

Three Pointers Made:

90	Kelsey Hoppel	2015-16
90	Ashton Duncan	2021-22
79	Ashton Duncan	2019-20
74	Kelsey Hoppel	2012-13
74	Jordan Hampton	2007-08
74	Angie Taylor	1997-98

Three Point Percentage (Min. 100 Att.):

.517	Allie Schulte	2018-19
.497	Jordan Hampton	2007-08
.469	Kelsey Hoppel	2013-14
.466	Jordan Hampton	2006-07
.463	Bailey Haist	2014-15

Steals:

115	Krista Lent	1990-91
107	Nicole Hampton	2015-16
105	Sherry Blackwell	1990-91
102	Tina Phillips	1991-92
99	Selestine Hurst	1996-97

Free Throws Attempted:

228	Mamy N'Kolomoni	2001-02
212	Beth Capps	1996-97
211	Carolyn Manning	2007-08
201	Emily Pool (Atkins)	2010-11
197	Emily Pool (Atkins)	2011-12

Free Throws Made:

177	Carolyn Manning	2007-08
166	Beth Capps	1996-97
157	Emily Pool (Atkins)	2011-12
156	Jordan Hampton	2006-07
153	Mamy N'Kolomoni	2001-02

Free Throw Percentage (Min. 50 Att.):

.938	Kelsey Hoppel	2013-14
.924	Nicole Hampton	2011-12
.922	Caitlyn Cunyus	2017-18
.921	Nicole Hampton	2012-13
.915	Grace Foster	2022-23

Blocked Shots:

129	Tess Bruffey	2017-18
113	Kellyn Schneider	2014-15
108	Tess Bruffey	2016-17
91	Kellyn Schneider	2015-16
86	Tess Bruffey	2014-15

Rebounds:

311	Grace Foster	2022-23
310	Nicole Hampton	2012-13
288	Kellyn Schneider	2014-15
282	Carolyn Manning	2007-08
281	Tess Bruffey	2017-18

Rebounds Per Game:

10.5	Laura Geurin	1983-84
10.3	Kellyn Schneider	2014-15
10.1	Nettie Gilbreath	1986-87
9.9	Darla Lynch	1981-82
9.2	Mamy N'Kolomoni	2000-01

CAREER RECORDS

Points Scored:

1,796	Nicole Hampton	2011-16
1,773	Beth Capps	1995-97
1,767	Jordan Hampton	2005-09
1,728	Tess Bruffey	2014-18
1,725	Emily Pool (Atkins)	2010-14

Points Per Game Average:

17.1	Nettie Gilbreath	1985-87
16.1	Beth Capps	1993-97
15.8	Burgundy Bass	1987-90
15.4	Darla Lynch	1979-83

Field Goals Attempted:

1,387	Darla Lynch	1979-83
1,352	Tess Bruffey	2014-18
1,316	Beth Capps	1993-97
1,278	Mamy N'Kolomoni	1998-02
1,213	Emily Pool (Atkins)	2010-14

Field Goals Made:

640	Beth Capps	1993-97
631	Tess Bruffey	2014-18
628	Mamy N'Kolomoni	1998-02
590	Nicole Hampton	2011-16
588	Darla Lynch	1979-83

Field Goal Percentage (Min. 700 Att.):

.585	Haley Fowler	416-711
.547	Kelsey Canavan	416-760
.540	Nicole Hampton	590-1093
.511	Roberta Ross	362-709
.510	Maddi Chitsey	503-987

Assists:

659	Nicole Hampton	2011-16
633	Sierra Lovorn (Wilcox)	2005-09
439	Haley Burton	2010-15
421	Allie Schulte	2017-22
397	Brittany Roberts (Hampton)	2008-12

Three Pointers Attempted:

708	Ashton Duncan	2017--22
672	Sierra Lovorn (Wilcox)	2005-09
646	Kelsey Hoppel	2011-16
560	Jordan Hampton	2005-09
559	Haley Burton	2010-15

Three Pointers Made:

276	Ashton Duncan	2017--22
272	Kelsey Hoppel	2011-16
248	Jordan Hampton	2005-09
234	Sierra Lovorn (Wilcox)	2005-09
204	Haley Burton	2010-15

Three Point Percentage (Min. 200 Att.):

.444	Allie Schulte	176-396
.443	Jordan Hampton	192-407
.421	Kelsey Hoppel	272-646
.407	Brittany Roberts (Hampton)	154-378
.407	Bailey Haist	148-364

Steals:

330	Nicole Hampton	2011-16
320	Allie Schulte	2017-22
271	Sherry Brown	1979-83
235	Sherry Blackwell	1988-91
226	Tabitha Qubty-Sellers	2000-04

Free Throws Attempted:

725	Emily Pool (Atkins)	2010-14
706	Mamy N'Kolomoni	1998-02
586	Beth Capps	1993-97
560	Nicole Hampton	2011-16
519	Jordan Hampton	2005-09

Free Throws Made:

565	Emily Pool (Atkins)	2010-14
510	Nicole Hampton	2011-16
459	Brittany Roberts (Hampton)	2008-12
456	Mamy N'Kolomoni	1998-02
449	Jordan Hampton	2005-09

Free Throw Percentage (Min. 100 Att.):

.911	Nicole Hampton	510-560
.874	Brittany Roberts (Hampton)	458-525
.873	Olivia Robertson	282-323
.865	Jordan Hampton	449-519
.848	Severyn Smith	224-264

Blocked Shots:

396	Tess Bruffey	2014-18
204	Kellyn Schneider	2014-16
174	Suzanne Copeland	1988-92
149	Maddi Chitsey	2016-20
122	Candace Clenney	2002-06

Rebounds:

1,053	Nicole Hampton	2011-16
911	Mamy N'Kolomoni	1998-02
845	Tess Bruffey	2014-18
838	Darla Lynch	1979-83
732	Carol Hise	1990-94

Rebounds Per Game:

9.39	Nettie Gilbreath	1985-87
8.38	Darla Lynch	1979-83
8.10	Nicole Hampton	2011-16
8.09	Kellyn Schneider	2014-16
7.92	Sharon Marion	1984-86

RADIO / TV HEADSHOT ROSTER



0 - GRACE FOSTER
Jr. | 6-1 | FW
Childress, Texas



1 - KENNEDY CHAPPELL
Fr.. | 5-9
Heath, Texas



2 - MACI MADDOX
Sr.. | 5-7
Lubbock, Texas



3 - AUDREY ROBERTSON
Sr. | 5-8 | G
Kerrville, Texas



4 - KIMBER MATHEWS
Fr. | 5-9 | G
Gruver, Texas



5 - TAYLOR ALLEN
Fr. | 5-9 | G
Roscoe, Texas



12 - TAYLOR THOMAS
So. | 5-9 | G
Canyon, Texas



15 - SHAYLEE STOVALL
Sr. | 5-6 | G
Idalou, Texas



22 - RYLEE VERDUIN
Fr. | 6-2 | FW
Wylie, Texas



23 - MARTIE MCCOY
So. | 5-11 | FW/G
Muenster, Texas



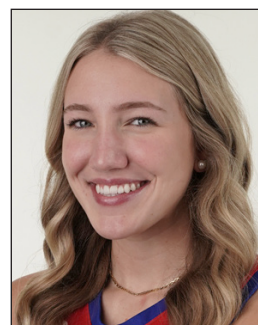
30 - AUDREY SPURGIN
Jr. | 6-2 | P
Fredericksburg, Texas



31 - TIA JOHNSON
So. | 5-9 | FW/G
Lubbock, Texas



33 - DEJA JOHNSON
So. | 5-9 | FW/G
Lubbock, Texas



40 - REESE SCHUMANN
Jr. | 6-1 | P
Houston, Texas



STEVE GOMEZ
Head Coach
21st Season



LANDON GOMEZ
Assistant Coach
1st Season



KAYCIE WILSON
Assistant Coach
9th Season



JULIO PACHECO
Volunteer Assistant Coach
4th Season



COURTNEY BURGESS
Athletic Trainer
1st Season