



LUBBOCK CHRISTIAN UNIVERSITY

2023-24 WOMEN'S BASKETBALL GAME NOTES

MEMBERS OF THE LONE STAR CONFERENCE - SEVEN NCAA REGION TOURNAMENT APPEARANCES - 2015-16, 18-19 & 20-21 NCAA DIV. II CHAMPIONS

WOMEN'S BASKETBALL GAME NOTES November 25, 2023

LCU LADY CHAPARRALS

Location Lubbock, Texas
Founded 1957
Enrollment 2,000
Affiliation NCAA Div. II
Conference Lone Star
Nickname Lady Chaparrals "Lady Chaps"
Athletic Director Nathan Blackwood (Interim)
Sports Information Chris Due
Head Coach Steve Gomez
Career Record (year) 505-144 / 21st

2023-24 LADY CHAPS SCHEDULE

Date	Opponent	Result
Nov. 3	vs. No.17 Union (Tenn.) \$	L 78-87
Nov. 5	vs. Adams State \$	W 69-65
Nov. 10	at Colorado Christian ^	W 67-62(ot)
Nov. 11	vs. Colorado State Pueblo ^	W 71-60
Nov. 17	vs. Southwestern Okla. St.	W 61-54
Nov. 18	vs. King (Tenn.)	W 82-42
Nov. 25	at Southern Nazarene	1:00 PM
Nov. 30	at Oklahoma Christian	5:30 PM
Dec. 2	at Arkansas Fort Smith	1:00 PM
Dec. 10	vs. Texas A&M International	1:00 PM
Dec. 12	vs. Texas A&M Kingsville	1:00 PM
Dec. 30	vs. SW'ern Assemblies of God (Exib)	5:00 PM
Jan. 4	at Cameron	5:30 PM
Jan. 6	at Midwestern State	1:00 PM
Jan. 11	vs. Texas Permian Basin	5:30 PM
Jan. 13	vs. Angelo State	1:00 PM
Jan. 18	at Eastern New Mexico	6:30 PM
Jan. 20	at Western New Mexico	2:00 PM
Jan. 25	vs. UT Tyler	5:30 PM
Jan. 27	vs. Texas Womans	1:00 PM
Feb. 1	vs. Midwestern State	5:30 PM
Feb. 3	vs. Cameron	1:00 PM
Feb. 8	at Angelo State	5:30 PM
Feb. 10	at Texas Permian Basin	1:00 PM
Feb. 15	vs. Western New Mexico	5:30 PM
Feb. 17	vs. Eastern New Mexico	1:00 PM
Feb. 22	at St. Edward's	5:30 PM
Feb. 24	at St. Mary's	1:00 PM
Feb. 29	vs. West Texas A&M	5:30 PM
Mar. 2	at West Texas A&M	1:00 PM

* - Lone Star Conference Game Times are Central

\$ - D2CCA Tip-Off Classic (Lubbock, Texas)
 ^ - RMAC/LSC Tip-Off Classic (Lakewood, Colo.)
 + - Lone Star Conference Championships (Frisco, Texas)



FACEBOOK/LCUCAPS
 TWITTER: @LCUCAPS
 INSTAGRAM: @LCUCAPS
 YOUTUBE: #LCUathletics



AT NO.12 SOUTHERN NAZARENE

Sat. Nov. 25 - 1 PM

NON-CONFERENCE BASKETBALL >> SAWYER CENTER (BETHANY, OKLA.)

LIVE SCORING: <http://www.snuathletics.com/sidearmstats/wbball> RADIO: NONE
 WATCH ONLINE: <https://www.youtube.com/@SNUCrimsonStorm/streams> LISTEN ONLINE: N/A

SNU RECORD: 5-0, 0-0 (GAC) ALL-TIME SERIES: SNU LEADS 25-14
 SNU: HOME 2-0, ROAD 1-0, NEUTRAL 2-0 LAST MEETING: 11/29/19 IN SAN ANTONIO, TEXAS (W 56-47)
 RANKINGS: No.12 (D2CSC), RV (WBCA) LAST WIN BY LCU: 11/19/19
 LAST WIN BY SNU: 3/2/12



GAME
7

HIT THE SNU-ZE BUTTON

No.18 Lubbock Christian University cruises into Bethany, Okla. Saturday for a 1 p.m. non-conference battle against No.12 Southern Nazarene. The contest is LCU's final Lone Star Conference tune-up, as they follow with LSC play at Oklahoma Christian Nov. 30. LCU is taking a five-game win streak into Saturday's tilt.

ROYALTY

The Lady Chaparrals are coming off an 82-42 win Saturday at home over King (Tenn.), which was part of the Food King Classic LCU hosted inside Rip Griffin Center. LCU went 2-0 in the Food King Classic, which also included a 61-54 win over Southwestern Oklahoma State. Maci Maddox led LCU in the event with an average of 14.5 points per game. LCU shot 53.1% from the field in the combined two games, shooting 48% (12/25) from three-point range. Along with Maddox's offensive production, LCU also received 11.0 points per game from Audrey Robertson and 9.5 points per game from Grace Foster (averaged 7.0 rebounds). Defensively, LCU held their opponents to 31.1% shooting and have forced 18.5 turnovers per game.



LUBBOCK CHRISTIAN (@LCUCAPS) LADY CHAPARRALS

Record: 5-1, 0-0 Lone Star
 Last Game: 82-42 W vs. King (Tenn.)
 Coach: Steve Gomez
 Gomez vs. SNU: 12-12

PROJECTED STARTERS

Pos.	Player	Class	Pts/p	Reb/p
G	Audrey Robertson	Sr.	11.5	3.7
G	Shaylee Stovall	Sr.	6.5	0.8
G	Maci Maddox	Sr.	15.2	4.3
F	Grace Foster	Jr.	16.0	7.2
F	Martie McCoy	So.	3.7	3.2

LCU LEADERS

AVG. POINTS
16.0 Grace Foster

REBOUNDS
7.2 (43) Grace Foster

ASSISTS
3.3 (20) Maci Maddox

STEALS
2.5 (15) Maci Maddox



SOUTHERN NAZARENE (@SNUATHLETICS) CRIMSON STORM

Record: 5-0, 0-0 GAC
 Last Game: 73-52 W vs. Mo. Southern St.
 Coach: Trent May
 Career Record: 420-199
 SNU Record: 98-46

PROJECTED STARTERS

Pos.	Player	Class	Pts/p	Reb/p
G	Lauryn Reither	Gr.	18.0	5.4
G	Abby Jiles	Gr.	11.2	6.4
G	Emily Monaghan	Gr.	12.0	3.4
G	Shannon Burton	So.	6.4	2.8
FW	Hannah Giddey	Sr.	11.4	10.8

SNU LEADERS

AVG. POINTS
18.0 Lauryn Reither

REBOUNDS
10.8 (54) Hannah Giddey

ASSISTS
5.6 (28) Hannah Giddey

STEALS
3.2 (16) Lauryn Reither

SEASON NOTES AND TRENDS

> LCU opened the season with at least 20 points from the free-throw line in their first four games this season, marking their first four-game span of 20-or-more free-throws since Feb. 18 - Mar.23, 2017. The Lady Chaps are taking advantage from the free-throw line, making 83.1% of their attempts (113/136, which is ninth nationally) and averaging 18.8 points a game from the line (12th nationally). Grace Foster has gone 13-of-13 from the free-throw line twice this season and enters Saturday with an active streak of 22 consecutive made free-throws. Each of the 13-made free-throw performances involve the most free-throws made in a game (13) since Nicole Hampton had 15 on Jan. 14, 2016 (third-most since 2008). Foster had 13 on Nov. 5 against Adams State at home, which set a Rip Griffin Center record. Foster's 13-of-13 marks are each one off Hampton's 14-of-14 school-record performance on Jan. 14, 2016 (at Newman). Foster's 13-of-13 on Nov.5 did mark a new Rip Griffin Center record previously held by Laynee Burr, who was 12-of-12 on Feb. 4, 2022 (against Midwestern State). The performance at the line for Foster on Nov. 12 against CSU Pueblo marked her sixth game

in which she was perfect from the line with six-or-more consecutive shots made. Foster is 39-of-43 on the season (.907, sixth in the LSC), which is second on the squad (of qualifiers) behind Shaylee Stovall, who is 13-of-14 (92.9%, fifth in the LSC).

> The Lady Chaps have three players in the top-25 in LSC scoring so far this season. Foster is averaging 16.0 points per game, which has her eighth in the LSC. Maci Maddox, coming off a 14-point performance Saturday, is ranking 11th in the LSC with 15.2 points per game and Audrey Robertson ranks 22nd with a pace of 11.5 points per game. The trio are also in top-15 in minutes played, with Maddox leading the conference (24th in the nation) with 37.0 minutes played per game (Foster is ninth in LSC at 31.2 and Robertson is 15th in LSC at 29.8 minutes per game). Maddox is seventh in the LSC with an assist/turnover ratio of 1.4.

> Foster is averaging 7.2 rebounds

LUBBOCK CHRISTIAN UNIVERSITY WOMEN'S BASKETBALL GAME NOTES

per game (10th in the LSC), but is third in the LSC averaging 6.8 defensive rebounds per game (43rd nationally). She led the LSC last season with a pace of 7.5 defensive rebounds per game.

> Maci Maddox is 16th nationally in steals with 15 on the season (second in LSC) and ranks seventh in the LSC with a pace of 2.5 steals per game. She has at least one steal in all six games to open the season and has steals in nine consecutive games (dating back to last season). Maddox opened last season with at least one steal in the first 11 games.

> LCU has four new additions on the roster this season (all are freshmen) and three have made their LCU debut, through the first six games. Kennedy Chappell has made the biggest impact, appearing in all six games and averaging 4.8 points a game. Taylor Allen and Kimber Mathews made their debut against King, with Allen posting nine points and Mathews supplying five points.

> Against King, Lubbock Christian's bench made an impact by scoring 44 points to its scoring output. All 13 players dressed saw action, with no player playing more than 20:55 (Maddox) and all players playing at least 10:59.

> LCU has shot at least 50% from the field in three of their six games this season, including the latest two. As a team, LCU ranks second in the LSC and 15th nationally with a 47.8% shooting percentage from the field. LCU leads the LSC and is 31st in three-point shooting, as they are 29-of-76 (38.2%) from long range.

MILESTONE

Grace Foster enters Saturday 72 points shy of 1,000 career points. The last Lady Chaps member to reach 1,000 career points is Ashton Duncan, who hit the mark Feb. 17, 2022 against Eastern New Mexico.

NATIONALLY KNOWN (OR UNKNOWN)

Despite returning five starters from a regional-finalist squad, which also shared a divisional title, LCU did not garner the attention of voters in the preseason. This season, LCU received Top-25 votes in the WBCA Preseason Poll, but it is their first time they did not make the Top-25 for a WBCA preseason poll since the start of the 2017-18 season (second time not in a WBCA Preseason Poll since becoming eligible for the poll in 2015-16... WBCA did not conduct a preseason poll in 2020-21 due to COVID). Also, since joining NCAA Division II (2015-16 was their first postseason eligible season), the Lady Chaps have appeared in every D2CSC Preseason Poll until this season, as they also received votes in the D2CSC Top-25 Preseason Poll. The WBCA has LCU re-

ceiving votes in their first in-season Top-25 national poll, but D2CSC released their second in-season rankings this week and LCU has moved up to No.18 from their season debut (No.22).

SO ARE SOME OTHERS

LCU fell to No.17 Union (Tenn.) Friday, placing them with a 0-1 record this season against nationally ranked programs. LCU went 6-0 against nationally ranked programs in 2020-21, 3-2 in 2021-22 (opened 3-0) and 2-5 last season against Top-25 competition. Southern Nazarene, receiving votes in the WBCA Top-25 poll, is ranked No.12 in the D2CSC poll.

ROAD REVELATIONS

The Lady Chaparrals, who went 8-4 on the road last season, is off to a 1-0 road record this season. They edged Colorado Christian 67-62 in overtime in Lakewood, Colo. On Nov. 10 in their first road contest of the season. The Lady Chaps have won their last six regular season on-conference road games, which a streak that has spanned since falling at Cameron on Dec. 8, 2019 (LCU was a Heartland Conference member that season). Audrey Robertson leads LCU in road scoring with 16 points. She co-leads the squad with Maci Maddox and Grace Foster, as they each average 6.0 rebounds on the road.

SWEET HOME (ON) CHICAGO

The Lady Chaps, who went 12-2 at home last season, are 3-1 this season at home. On Feb. 2, 2023, the NCAA Division II record home win streak came to a close, as LCU fell to Angelo State, which ended the record win streak at 113. The loss was LCU's first at home since Jan. 1, 2015 against Oklahoma City University. LCU, who also had a 7-0 mark in NCAA postseason play in Lubbock in the mix (not including a 4-0 mark in LSC postseason play), had also won 88 consecutive home conference games (their last conference home loss occurred Jan. 10, 2013 against Oklahoma City). They completed a 49-0 all-time mark in Heartland Conference home games (they are 35-1 in LSC home games). LCU also went 11-0 during their 113-game home win streak against nationally ranked programs.

NCAA DIVISION II'S LONGEST HOME WIN STREAKS

113 - Lubbock Christian Jan. 1, 2015 - Feb. 2, 2023
87 - Neb. Kearney Jan. 31, 1995-Nov. 24, 2001
85 - West Tex. A&M Jan. 9, 1987-Dec. 6, 1991

EYE-OPENING

The 2023-24 season marks LCU's 11th since leaving the NAIA and LCU is 271-47 record (85.2%) in that span. In NCAA postseason play, the Lady Chaps are 24-3 all-time (88.9%).

FIVE THINGS ABOUT SNU

1 > The Bethany, Okla. based Crimson Storm posted a 27-5 mark last season (21-1 in Great American Conference to win the conference regular season title). SNU won the GAC postseason tournament and claimed the No.8-seed at the NCAA Division II Central Regional, where they lost at No.1-seed and host Minnesota-Duluth.

2 > SNU are off to a 5-0 start to the season after topping Missouri Southern State at home (73-52) Tuesday. They are 2-0 at home and have won their last 14 home contests (Feb. 26, 2022 vs. Southwestern Okla. State was their last home loss).

3 > The Crimson Storm are picked to win the GAC this season, as they took the top spot (of 12) in the conference's Preseason Coaches' Poll (received seven of the 12 first-place votes).

LADY CHAPS HISTORY

NCAA NATIONAL CHAMPIONSHIPS
2016 2019 2021

NCAA TOURNAMENT APPEARANCES
2016 2018 2019 2020 2021 2022 2023

NCAA DIV. II SOUTH CENTRAL REGION
TOURNAMENT CHAMPIONS
2016 2018 2019 2021

LONE STAR CONFERENCE
CHAMPIONS
2020,2021 (Won Tournament) 2021 (Regular Season)

LONE STAR CONFERENCE
DIVISION CHAMPIONS
2021 (West), 2023 (West)

HEARTLAND CONFERENCE
2013/2014 First Place
2014/2015 Regular Season Champions
2015/2016 Regular Season Champions
2017/2018 Regular Season Champions
2018/2019 Regular Season Champions

HEARTLAND CONFERENCE
TOURNAMENT CHAMPIONS
2016 2018 2019

SAC CONFERENCE CHAMPIONS
2006/2007
2011/2012

SAC TOURNAMENT CHAMPIONS
2013

NAIA NATIONAL QUALIFIERS
2004 2009
2005 2010
2006 2011
2007 2012
2008 2013

NAIA SWEET SIXTEEN FINISH
2007
2009

NAIA ELITE EIGHT FINISH
2008
2011
2013

NAIA FAB FOUR SEMIFINALISTS
2012

NAIA NATIONAL FINALIST
2006

4 > SNU returns Defensive Player of the Year and GAC Tournament MVP Hannah Giddey, who led the nation in blocks per game while adding 12.3 points, 7.8 rebounds and 3.7 assists per game last season. She shot a league-leading 57.1 percent from the floor. Giddey ranks 10th this season with an average of 4.4 blocks per game and is 22nd nationally with 10.8 boards per game.

5 > Lauryn Reither has been a threat on both ends of the court for SNU, as she leads the team with 18.0 points a game and 3.2 steals per game. She is averaging 20 points over the past two games.

THE SERIES AGAINST SNU

SNU leads the all-time series 35-14, which dates back to the 1993 season. The two squads last met on Nov. 29, 2019, with LCU claiming a 56-47 win over SNU in San Antonio, Texas. Prior to that meeting, LCU had met SNU once since Mar. 2, 2012, which was their last season in which the two squads were conference foes in the NAIA's Sooner Athletic Conference. The last time LCU played at SNU's Sawyer Center was December 31, 2011 (New Year's Eve), with LCU (then No.17) claiming an 81-64 win over No.15 SNU behind a 20-point, 12-rebound double-double performance behind Emily Atkins (now Emily Pool). LCU has won eight of the prior 10 meetings against SNU

23-24 LADY CHAPS IN THE RANKINGS

	D2CSC	WBCA
Preseason	RV	RV
Poll 1	22	(no poll)
Poll 2	18	RV
Poll 3	-	-
Poll 4	-	-
Poll 5	-	-
Poll 6	-	-
Poll 7	-	-
Poll 8	-	-
Poll 9	-	-
Poll 10	-	-
Poll 11	-	-
Poll 12	-	-
Poll 13	-	-
Poll 14	-	-
Poll 15	-	-
Poll 16	-	-
Poll 17	-	-

LUBBOCK CHRISTIAN UNIVERSITY WOMEN'S BASKETBALL GAME NOTES

and are 12-12 all-time under Gomez against SNU.

ACTIVE LADY CHAP LEADERS VS. SNU

No current rostered Lady Chaps have ever appeared in a prior game against SNU

PREVIOUS RECAP VS. SNU

Nov. 29, 2019 (San Antonio, Texas) – LCU:56 - SNU:47
Maddi Chitsey surpassed 1,000 career points as a Lady Chaparral and Allie Schulte notched 14 points and a career-high nine rebounds to help No.1 Lubbock Christian University overcome a 10-point deficit to defeat Southern Nazarene 56-47 in the opening game of the St. Mary's Thanksgiving Classic inside Bill Greehey Arena.

The contest was not easy on the eyes, as LCU, held to 28 points through three-quarters, produced a 28-point outburst in the fourth quarter and that was without a field goal in the game's final 2:52. The Lady Chaps entered the fourth quarter trailing SNU 33-28, and even fell behind 37-31, before rallying back. Caitlyn Cunyus scored her first points of the game with a three-pointer and followed with a pair of free-throws for five straight points during a 7-1 LCU run to tie the game at 38-38 with 6:13 remaining. Cunyus would connect on two more free-throws to continue what would eventually be a 17-3 LCU run. The run for LCU was capped by an Ashton Duncan three-pointer, which not only provided LCU with a 48-40 lead (2:52 remaining), but it would be LCU's final field goal of the game. LCU scored their final eight points of the game from the free-throw line to seal the victory.

Both teams struggled producing any offense throughout the game. SNU missed their opening eight field goal attempts, while LCU opened the game 1-of-7 from the field. The Crimson Storms first two field goals made were three-points by Sonia Sarda. The first three-pointer by Sarda was made 6:34 into the game and the second gave SNU a 7-6 lead, as LCU was held to two field goals the entire first quarter. SNU led 11-6 after the first quarter.

LCU had four field goals on their opening 24 attempts (16.7%) and finished the first half 5-of-25 (20%) from the field. LCU's starters were 3-of-19 (15.8%) in the first half. SNU was not much better (they were 8-of-31 (25.6%) in the first half), but they did have a 22-14 lead behind Sarda's 12 points in the first half.

The Lady Chaps offense found a bit of a pulse in the third quarter. Chitsey and Schulte made consecutive shot attempts a minute into the half (LCU's first series of successful shot attempts), but LCU would still be held to four field goals in the quarter. It progressed into a 54.5% shooting mark (6-of-11) in the fourth quarter, as LCU was 10-of-23 (43.5%) from the field in the second half. They did have a stretch a 10-of-19 (52.6%) shooting stretch during the second half, while holding SNU to a 31.0% (9-of-29) shooting mark in the second half.

SNU did receive nine points from Kennedy Gillette in the second half and all here in the third quarter. She was 3-of-4 shooting in the quarter, while the rest of the Crimson Storm were a combined 0-of-9 in the quarter. Gillette finished with 9 points and 10 rebounds in the contest. SNU finished the game 28.3% from the field. Sarda led SNU with 14 points and combined with Gillette to produce 9 of SNU's 17 field goals. SNU, entering the game third nationally in blocks per game (7.0) recorded one block in the contest.

Schulte, with eight points in the fourth quarter and 12 in the half, led LCU with 14 points. She was 8-of-8 from the free-throw line. She becomes the eight Lady Chap to be perfect from the line with at least eight attempts since Nicole Hampton went 14-of-14 on Jan. 16, 2014 (no one has been 9-of-9 or better since Hampton's mark). LCU went 18-of-20 (90%) from the free-throw line in the second half and made their last 13 free-throw attempts (13-of-13 in the fourth quarter). A big positive for the Lady Chaps, who were 8-of-15 (53.3%) before the 13 straight makes from the line. LCU outscored SNU 21-7 at the line.

GAME-BY-GAME RESULTS AND HIGHS

Opponent	Date	Score	Points	Rebounds	Assists	Steals	Blocked shots
UNION (TN)	11/03/23	78-87	16-Grace Foster Maci Maddox	7-Grace Foster	4-Martie McCoy Grace Foster Maci Maddox	3-Audrey Robertson	1-Grace Foster Martie McCoy
ADAMS ST.	11/05/23	69-65	28-Grace Foster	8-Grace Foster	4-Maci Maddox	3-Maci Maddox	1-Grace Foster Martie McCoy
at Colo. Christian	11/10/23	67-62	16-Audrey Robertson	6-Grace Foster Maci Maddox Audrey Robertson	4-Maci Maddox	3-Maci Maddox	1-Reese Schumann Audrey Spurgin
vs CSU Pueblo	11/11/23	71-60	24-Grace Foster	8-Grace Foster Audrey Robertson	5-Maci Maddox	5-Maci Maddox	1-Grace Foster
SOUTHWESTERN OKLA.	11/17/23	61-54	15-Maci Maddox	9-Grace Foster	6-Audrey Robertson	2-Maci Maddox	1-Grace Foster Martie McCoy
KING (TN)	11/18/23	82-42	14-Maci Maddox	5-Grace Foster Tia Johnson	4-Martie McCoy Shaylee Stovall	2-Kennedy Chappell Reese Schumann	1-Martie McCoy Reese Schumann

Chitsey, LCU's only other player in double figures (12 points), entered the game with 998 career points and surpassed the 1,000-point mark in the opening quarter. LCU's last player to hit the 1,000-point mark was Olivia Robertson in March of last season. Chitsey also finished with a plus/minus of +18. Caitlyn Cunyus and Schulte each had career marks with nine rebounds, with Cunyus notching the mark for the second time in a three-game stretch. Her sister Channing Cunyus was vital, scoring seven points off a 2-of-2 three-point shooting performance and notching a block in 10 minutes of work.

The Crimson Storm, who led as much as 22-12 with a minute left in the first half, led for over 25 minutes (25:07) in the contest. LCU overcame their first halftime deficit of the season and moved to 2-0 when trailing after three quarters. Their 10-point deficit to overcome was their largest of the season and it matched a 10-point deficit they faced in last season's Division II championship game win over Southwestern Oklahoma State.

HEAD COACH STEVE GOMEZ

AT LCU: 21st Season (505-143)
OVERALL: 21st Season (505-143)

PERSONAL

HOMETOWN: Lubbock, Texas
SPOUSE: Shawna
CHILDREN: Hayden, Landon

EDUCATION

Lubbock Christian / 1988

COACHING EXPERIENCE

Lubbock Cooper High School (7 seasons)
LCU (20th season)

GOMEZ'S YEAR-BY-YEAR RESULTS

2003-2004	16-14	2022-2023	24-10
2004-2005	16-14	2023-2024	5-1
2005-2006	23-12		
2006-2007	26-7		
2007-2008	25-10		
2008-2009	27-7		
2009-2010	19-12		
2010-2011	23-10		
2011-2012	28-6		
2012-2013	31-4		
2013-2014	25-1		
2014-2015	21-7		
2015-2016	35-0		
2016-2017	19-11		
2017-2018	31-1		
2018-2019	32-5		
2019-2020	28-3		
2020-2021	23-0		
2021-2022	28-7		

The 2023-24 season marks Steve Gomez's 21st season at the helm of the Lady Chaps and the 11th season at the NCAA level. He opens the campaign with a 500-143 record, which includes a 24-3 record in NCAA postseason play.

In his first 10 seasons at the helm, as LCU was an NAIA institution, the Lady Chaps made 10 consecutive trips to the NAIA Division I Women's Basketball National Championship Tournament. Coach Gomez's arrival to the LCU women's basketball program certainly changed the foundation of the program. In those 10 seasons, LCU posted a 234-96 record under Gomez in the NAIA.



LCU jumped into NCAA Division II transition in 2013 (membership in 2015) and the winning tradition did not change. LCU went a remarkable 25-1 overall in 2013-2014 and they completed the Heartland Conference with a perfect 20-0 mark for their first perfect conference record in program history. They followed in 2014-2015 claiming Co-Heartland Conference Regular Season title honors after a 15-3 stretch in conference and a 21-7 overall season.

That led to an astounding 2015-2016 season, which was a season that started off with an exhibition game loss at NCAA Div. I No.1 Connecticut and ended with a perfect 35-0 season in LCU's first season eligible for NCAA postseason. They went 18-0 in Heartland Conference play to capture a regular season title and then a Heartland Conference Tournament title (first season eligible for the tournament). The Lady Chaps went on to capture a South Central Regional Tournament title and eventually their first NCAA Div. II National Title. Gomez claimed WBCA NCAA Div. II National Coach of the Year honors and also spent a portion of the offseason as a court coach at the 2016 USA Basketball Women's U17 World Championship Team Trials in Colorado Springs, Colo.

2016-17 served as a rebuilding year for the Lady Chaps, who returned one starter off the championship squad. Despite the rebuilding, LCU still went 19-11 overall and 12-4 in conference, en route to the Heartland Conference Tournament championship game, which they lost to St. Edward's. They bounced back in 2017-18, claiming another Heartland Conference regular season and tournament title, leading to Gomez receiving Heartland Conference Coach of the Year honors. The Lady Chaps hosted the NCAA Division II South Central Region Tournament for a second time and won the tournament to stamp their second berth towards an NCAA Division II Elite Eight Tournament loss. They lost to eventual national champion Central Missouri at the tournament held in Sioux Falls, S.D., ending their season with a 31-2 record.

The Lady Chaps returned to the Elite Eight Tournament for the third year in a four-year span in the 2018-19 season after claiming a Heartland Conference regular season and tournament title, along with a NCAA Division II South Central Region tournament championship after wins at Colorado Mesa and at home over Angelo State. LCU made an outstanding run towards their second NCAA Division II National Title, defeating Southwestern Oklahoma State in double overtime to claim the trophy. Gomez, who picked up his third Heartland Coach of the Year honor, became the seventh head coach in NCAA Division II women's basketball history to claim multiple titles. He also was named Female Team Coach of the Year at the West Texas Sports Persons of the Year Banquet following the season.

LCU's title defense was rudely interrupted by the COVID Pandemic in 2019-20. LCU was 28-3 and claimed the Lone Star Conference Championship during their first season in the conference. LCU was chosen to host the NCAA Division II South Central Regionals for a third time, but the COVID shutdown halted the remainder of the season less than 24 hours prior to the first tournament game.

COVID went from being a wall to a hurdle in 2020-21, and one the Lady Chaps would be able to jump over. Through many cancellations and unknowns, LCU claimed a Lone Star Conference title and went to Canyon, Texas, where they claimed a NCAA Division II South Central title and a berth to another NCAA Elite Eight Tournament in Columbus, Ohio. It was there, LCU would claim their third national title, with wins over Daemen, Central Missouri and Drury to complete a 23-0 perfect season. They were the first NCAA Division II program to complete two undefeated seasons.

The Lady Chaps were preseason favorites to open the 2021-22 season. LCU surpassed a NCAA Div. II record 100 consecutive home wins during the season, which ended at the South Central Regional with LCU falling in the title game to conclude the season with a 28-7 record.

His 20th season was a memorable one, as for the first time in his coaching tenure, he had five new starters entering the season. A season that would end with a 24-11 record, a co-divisional title and as regional finalist falling in the South Central Region Championship Game in San Antonio, Texas. Lubbock Christian closed the 2021-22 season holding a 266-47 record (85.0%) since leaving the NAIA.

In their final two seasons in the NAIA (2011-2012, 2012-2013), LCU set program single-season win records in each of the seasons. The Lady Chaps went 31-4 in 2013-2014, setting a program single-season wins mark (31). The Lady Chaps won their first ever Sooner Athletic Conference Tournament title en route to their final trip to the NAIA National Championship tournament. In 2011-2012, LCU went 28-6 and made their second ever appearance in the Semifinals of the NAIA National Championship Tournament. They lost out to eventual national champions Oklahoma City to mark the second consecutive season in which they lost out to the team who would claim the title. LCU claimed their second Sooner Athletic Conference crown in program history, as they joined Oklahoma City as conference co-champions with a 21-1 record. They handed OCU their only loss of the season.

LCU went 25-10 in 2010-2011 and marched into the Elite Eight for a third time in program history. The Lady Chaps, who finished third in the Sooner Athletic Conference, lost in the NAIA National Championship to eventual national champion Azusa Pacific. LCU went 19-12 in the 2009-2010 season, which included a 13-9 finish in the Sooner Athletic Conference, and had their season come to an end in the National Tournament. The highlight of the season was an exhibition victory inside the United Spirit Arena against Texas Tech University.

In 2009-2010, the Lady Chaps finished with a solid 27-7 record and made a trip to the Sweet Sixteen of the National Tournament following a second-place Sooner Athletic Conference season. Gomez chalked up a milestone during the season, becoming the all-time women's basketball wins leader at LCU. They had a memorable 2007-2008 campaign, as the Lady Chaps made another voyage to the NAIA National Tournament. The Lady Chaps completed a 25-10 season, which included a trip to the Elite Eight in the tournament for their second best finish in program history.

In 2006-2007, Gomez led the Lady Chaps to a myriad of firsts in their near-thirty year history. Lubbock Christian never left the top-10 in the NAIA National Poll, and set a school mark for wins in a season with 26, eclipsing the school mark of 23 they set the prior season. In addition, LCU made its fourth consecutive trip to the NAIA National Tournament, finishing in the Sweet Sixteen and most impressively, the Lady Chaps captured a share of the Sooner Athletic Conference regular season championship, becoming the first school from outside of the State of Oklahoma to do so in the thirty-one years since the conference was founded. In 2005-2006, Gomez's Lady Chaps enjoyed what was arguably at the time the best season in school history, as they finished with an overall record of 23-12, and made an unparalleled run at the NAIA National Tournament. Seeded sixth in their eight team bracket in the tournament, Gomez's girls proceeded to oust four of the top six teams in the nation and become the lowest seed ever to reach either the Fab Four or National Championship; appropriately enough, he was named the SAC's Coach of the Year.

Gomez's Lady Chaps went 16-14 in his first season and finished fifth in the Sooner Athletic Conference. While this might appear to be an average year, big wins for the Lady Chaps and entry into the NAIA National Poll for the first time proved good enough for an at-large bid to the NAIA National Tournament: LCU women's first trip to the big dance. In his second season, the Lady Chaps were able to maintain that level of success. After getting off to the best conference start since joining the Sooner Athletic Conference at 6-2, LCU finished SAC play at 10-8, good enough for another fifth place finish, and for the second season in a row, Coach Gomez guided the Lady Chaps to the NAIA National Tournament.

An LCU graduate, Gomez was a standout perimeter player for Coach John Copeland in the late 1980s, and to this day, he still holds the school record for career free throw percentage at .855. He graduated in 1988 with a Bachelor's of Science Degree in Mathematics and consistently used his degree to teach in the classroom while pursuing coaching on the sidelines. Gomez's career began at Lubbock Monterey High School where he served as an assistant coach in the men's basketball program from 1988 to 1995. In 1996, Gomez accepted the men's basketball head coaching position at Lubbock Cooper High School, where he remained until returning to Lubbock Christian University to take over the reigns of the Lady Chaps in 2003. During his seven seasons at Cooper, the basketball program broke new ground making the playoffs four times, managing the school's first state ranking, and capturing the Pirates only district championship in Gomez's final season. One of the main reasons Coach Gomez is so successful on the court is the support he receives off of it. Steve has been married to his wife Shawna for 32 years, and the couple has two sons: Hayden and Landon. Landon serves on the women's basketball coaching staff at LCU.





LONE STAR CONFERENCE

LSC WEEKEND SCHEDULE

Friday, Nov. 24

Cameron at Colorado School of Mines
 Missouri Southern at Angelo State
 Midwestern State vs Tampa (San Angelo, Texas)
 Texas A&M-Kingsville vs Oklahoma Baptist (San Antonio, Texas)
 Missouri Western at St. Mary's
 Eastern New Mexico at CSU Pueblo

Saturday, Nov. 25

Cameron at Regis
 Tampa at Angelo State
 Lubbock Christian at Southern Nazarene
 UAFA at Arkansas Monticello
 Ouachita Baptist at UT Tyler
 Texas A&M-Kingsville vs. Mo. Western St. (San Antonio, Texas)
 Texas Woman's at Henderson State
 Midwestern State vs Missouri Southern (San Angelo, Texas)
 Oklahoma Baptist at St. Mary's
 Eastern New Mexico at UCCS

LSC PLAYERS OF THE WEEK

Date	Offensive	Defensive
11/7	Ashley Ingram (TWU)	Ngozi Obineke (TAMU)
11/14	Leila Patel (TWU)	Maci Maddox (LCU)
11/21	Andreea Mancha (UTPB)	Avalon Munoz (UTPB)

PRESEASON POLL

School	1st	Total Points
1 Angelo State (15)	652	15
2 Texas Woman's (17)	633	17
3 UT Tyler (9)	627	9
4 Lubbock Christian (3)	606	3
5 West Texas A&M	524	
6 Texas A&M-Kingsville	492	
7 St. Edward's	379	
8 Cameron	311	
9 Oklahoma Christian	270	
UT Permian Basin	270	
11 Eastern New Mexico	248	
12 Western New Mexico	233	
13 Texas A&M International	225	
14 UAFA	202	
15 Midwestern State	172	
16 St. Mary's	140	



KAYCIE WILSON - ASSISTANT COACH

Kaycie joined the LCU women's basketball coaching staff in the 2014-15 season as a graduate assistant through the 2015-16 season. She has played an integral role in the coaching staff for all three NCAA national championships. Wilson was named to the Dave Campbell's Texas Basketball Top-40 Coaches Under-40 List in 2021. She spent her senior season (2013-14) playing in the interior of LCU's first season in the Heartland Conference, which went 20-0 in conference for a regular season first place finish. She spent three seasons (09/10 - 11/12) at NCAA Div. I Missouri-Kansas City, where she combined to average 4.9 points and 3.9 rebounds in 87 games. The forward also combined for 44 steals, 95 assists and 34 blocks for UMKC (21 blocks as a sophomore). Boyles was a multiple recipient on The Summit League Winter/Spring Academic All-League Team and the Commissioner's List of Academic Excellence as a distinguished scholar. She is a Lubbock native and a product of Coronado High School, where she was rated the No.45 best forward in the nation by Collegiate Girls Basketball Report and the No.55 best player in Texas by Premier Basketball Report. The multi-winning All-State recipient was named the Girls Basketball Player of the Year by the Lubbock Avalanche Journal, as well as the 2009 5A-4A All-South Plains Player of the Year after 17.6 points and 7.9 rebounds a game.



LANDON GOMEZ - ASSISTANT COACH

Landon, the son of Steve Gomez (women's basketball head coach) joined the Lady Chaparrals in his current role prior to the 2023-24 season. While earning a Bachelor's degree in Exercise Sports Science (ESS) at LCU (2017-2021), Landon spent three seasons as a student-assistant coach with the Lady Chaparrals. Landon was part of the 2019 and 2021 NCAA Division II national championship squads. He went on to complete a Masters of Science (degree) in Sport Management at Texas Tech, where he served as a graduate-assistant coach for the Lady Raiders basketball program. At Tech, Landon was on staff from 2021-23 and assisted in scouting reports and oversaw the scout/practice teams. The Lady Raiders made their first post-season appearance (WNIT) since the 2012-13 season and made a berth to the Super Sixteen (round).

Women's Basketball Support Staff



Volunteer Assistant Coach
Julio Pacheco



Sports Information Contact
Chris Due



Assistant Athletic Trainer
Courtney Burgess ATC/L



Student Trainer
Amberlee Aduddell



Student Assistant
Whitney Cox



Student Assistant
Cara Paschall



Student Assistant
Bri Pruitt

2023-24 LONE STAR CONFERENCE STANDINGS

School	Div	DPct.	Conf	CPct.	Overall	Pct.	Streak	Home	Away	Neutral
East Division										
Texas A&M International	0-0	.000	0-0	.000	7-0	1.000	W7	2-0	0-0	5-0
Texas Woman's	0-0	.000	0-0	.000	6-0	1.000	W6	3-0	1-0	2-0
UT Tyler	0-0	.000	0-0	.000	3-3	.500	W1	1-0	1-1	1-2
Texas A&M-Kingsville	0-0	.000	0-0	.000	2-3	.400	W2	0-0	2-0	0-3
UAFA	0-0	.000	0-0	.000	2-3	.400	L3	2-2	0-1	0-0
Oklahoma Christian	0-0	.000	0-0	.000	1-3	.250	L3	0-0	0-1	1-2
St. Edward's	0-0	.000	0-0	.000	1-3	.250	W1	1-1	0-1	0-1
St. Mary's	0-0	.000	0-0	.000	0-2	.000	L2	0-0	0-1	0-1
West Division										
Western New Mexico	0-0	.000	0-0	.000	4-0	1.000	W4	1-0	1-0	2-0
Lubbock Christian	0-0	.000	0-0	.000	5-1	.833	W5	3-1	1-0	1-0
UT Permian Basin	0-0	.000	0-0	.000	4-1	.800	W3	1-0	0-1	3-0
Eastern New Mexico	0-0	.000	0-0	.000	3-1	.750	L1	2-0	1-1	0-0
Angelo State	0-0	.000	0-0	.000	3-2	.600	W3	0-0	0-0	3-2
Cameron	0-0	.000	0-0	.000	2-2	.500	W1	2-1	0-1	0-0
West Texas A&M	0-0	.000	0-0	.000	3-3	.500	W1	0-1	1-1	2-1
Midwestern State	0-0	.000	0-0	.000	0-4	.000	L4	0-2	0-2	0-0

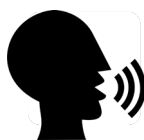
2023-2024 LCU ROSTER

No.	Name	Pos.	Ht.	Cl.	Yrs.Left	Hometown School	High School
0	Grace Foster	FW	6-1	Jr.	2	Childress, Texas	Childress H.S.
1	Kennedy Chappell	G	5-9	Fr.	4	Heath, Texas	Dallas Christian H.S.
2	Maci Maddox	G	5-7	Sr.	1	Lubbock, Texas	Frenship HS
3	Audrey Robertson	G	5-8	Sr.	1	Kerrville, Texas	Tivy HS
4	Kimber Mathews	G	5-9	Fr.	4	Gruver, Texas	Gruver H.S.
11	Taylor Allen	G	5-9	Fr.	4	Roscoe, Texas	Highland H.S.
12	Taylor Thomas	G	5-9	So.	3	Canyon, Texas	Canyon H.S.
15	Shaylee Stovall	G	5-6	Sr.	1	Idalou, Texas	Idalou HS
22	Rylee Verduin	FW	6-2	Fr.	4	Wylie, Texas	Homeschool
23	Martie McCoy	FW/G	5-11	So.	3	Muenster, Texas	Muenster H.S.
30	Audrey Spurgin	P	6-2	Jr.	2	Fredericksburg, Texas	Fredericksburg H.S.
31	Tia Johnson	FW/G	5-9	So.	3	Lubbock, Texas	Brownfield H.S.
33	Deja Johnson	FW/G	5-9	So.	3	Lubbock, Texas	Brownfield H.S.
40	Reese Schumann	P	6-1	Jr.	2	Houston, Texas	Clear Lake H.S.

Head Coach: Steve Gomez

Assistant Coaches: Kaycie Wilson, Landon Gomez,

Julio Pacheco (Vol. Asst.)



PRONUNCIATIONS

CHAPPELL: chap-el (like a church service)
 STOVALL: stow-VAHL
 VERDUIN: ver-DUE-in
 DEJA (Johnson): DAYja
 SPURGIN: spurJEN
 SCHUMANN: shewman

GEO PRONUNCIATIONS

Gruver: GREW-ver
 Idalou: EYE-d'LEW
 Kerrville: K'RRville
 Lubbock: Luhbuck
 Muenster: MUHNster
 Tivy: TY-vee

CHAPS: shhapps (not CH-apps)

NCAA DIVISION II POLLS



WBCA DIV.II TOP 25 (11/21/23)

Rank	School	Pts	1st.	1st
1	Ashland (4-0)	575	23	1
2	Grand Valley State (4-0)	536	0	3
3	Catawba (2-0)	507	0	4
4	Assumption (3-0)	485	0	6
5	Central Missouri (3-0)	467	0	10
6	West Chester (3-0)	455	0	13
7	Union, TN (4-0)	434	0	17
8	Bentley (4-0)	356	0	18
9	Texas Woman's (6-0)	355	0	24
10	Montana State Billings (5-1)	304	0	15
11	Ferris State (3-0)	292	0	20
12	Missouri Western State (2-0)	215	0	25
13t	Eckerd (2-1)	189	0	9
13t	West Virginia State (3-1)	189	0	16
15	Tampa (4-2)	164	0	5
16	Gannon (5-1)	158	0	RV
17	Drury (3-0)	155	0	RV
18	Regis, CO (3-0)	144	0	RV
19	Thomas Jefferson (4-0)	139	0	RV
20	California, PA (3-0)	127	0	RV
21	Western Washington (3-1)	121	0	RV
22	Glenville State (3-1)	110	0	23
23	Wingate (3-1)	104	0	14
24	Azusa Pacific (4-2)	94	0	12
25	Minnesota Duluth (1-1)	85	0	8

Receiving Votes: Lubbock Christian (5-1) 76; Anderson, SC (4-0) 73; Minnesota State Marikato (2-3) 66; Southern Nazarene (4-0) 63; Missouri Southern State (2-0) 45; Fort Hays State (3-0) 42; Cal State Dominguez Hills (2-2) 41; Texas-Tyler (3-3) 37; North Georgia (3-1) 31; Lincoln, PA (2-0) 24; Savannah State (1-0) 21; Cal State San Marcos (2-2) 20; Colorado Mesa (5-1) 20; Angelo State (3-2) 17; Michigan Tech (3-1) 17; West Georgia (3-0) 14; Fairmont State (4-0) 10; Harding



D2CSC DIV.II TOP 25 (11/21/23)

Rank	School	Rec	Pts	Prev.
1	Ashland (15)	4-0	399	1
2	Grand Valley State	4-0	372	2
3	Catawba	2-0	344	3
4	Central Missouri	3-0	339	5
5	Assumption	3-0	332	4
6	Texas Woman's (1)	6-0	315	6
7	Union	4-0	308	7
8	California (Pa.)	3-0	286	9
9	West Chester	3-0	252	8
10	Drury	3-0	245	12
11	Jefferson	4-0	231	11
12	Southern Nazarene	4-0	218	13
13	Regis	3-0	206	15
14	Montana State Billings	5-1	204	21
15	Florida Southern	2-0	178	16
16	Bentley	4-0	164	17
17	Western Washington	3-1	124	10
18	Lubbock Christian	5-1	102	22
19	Missouri Western	2-0	92	RV
20	Gannon	5-1	90	RV
21	Anderson	4-0	83	NR
22	Ferris State	3-0	81	RV
23	Tampa	4-2	71	24
24	Azusa Pacific	4-2	41	18
25	Minnesota Duluth	1-1	31	20

RV: Southern New Hampshire (18); Colorado Mesa (17), Cal State-San Bernardino (3); Missouri Southern (2); Glenville State (2);



NCAA SOUTH CENTRAL REGIONAL RANKINGS

Schools vs. D2 rec. In-Region



D2CSC SOUTH CENTRAL REGION POLL

Rank	School (First-Place Votes)	W-L	Pts.	Prev.
1	Texas Woman's (6)	6-0	60	1
2	Regis	3-0	51	2
3	Lubbock Christian	5-1	46	3
4	Colorado Mesa	5-1	39	4
5	Colorado Mines	3-1	35	5
6	Texas A&M International	5-0	29	8
7	Angelo State	3-2	17	7
8	Eastern New Mexico	3-1	13	RV
9	Texas A&M - Kingsville	2-3	9	RV
10	Western New Mexico	4-0	8	RV

WEBSITE & BROADCAST PARTNERS

ON THE NET - WWW.LCUCHAPS.COM

The official website of LCU Athletics is where you can find everything relating to the LCU basketball teams. Schedules, results, rosters, bios, statistics and game notes can be found there.

ON THE AIR

Each game will be broadcast on the LSC Digital Network as an option for fans unable to attend. The LSC Digital Network will offer season passes for basketball, giving fans access to all regular-season contests on the network for that sport. In addition, viewers will continue to have the option to purchase a \$10 day pass that provides access to all broadcasts aired that day and access to all archived content for 24 hours.

2022-23 LSC Digital Network Rates

24-Hour Day Pass:	\$10.00
Men's and Women's Basketball Season Pass:	\$75.00
Archive Download:	\$10 per broadcast

The LSC Digital Network enters its fourth season in 2022-23, showcasing academic and athletic events from the league, its 17 member institutions and three football affiliates in partnership with BlueFrame powered by Hudl. Fans can watch broadcasts and purchase passes online at www.lonestarconference.net on computer and mobile devices. Viewers can also tune in to games on the LSC Digital Network via OTT apps available on Apple TV, Amazon Fire TV, Android TV and Roku by searching for "LSC Digital Network."



DIGITAL NETWORK

King of Pain... Lady Chaps Top King By 40

LCU Suited Up 13 Players and All 13 Had At Least One Field Goal

LUBBOCK CHRISTIAN -VS- KING (Tenn.)



No.22 Lubbock Christian University received at least one field goal from all 13 Lady Chaparrals touching the floor, and the Lady Chaparrals outscored King (Tenn.) 27-1 in points off turnovers to cruise to an 82-42 victory to close out the Food King Classic Saturday night inside Rip Griffin Center.

Maci Maddox led the Lady Chaps (5-1) with 14 points. Grace Foster also tacked on nine points and Taylor Allen, making her collegiate and Lady Chaps debut, helped out with nine points off the bench.

The Lubbock Christian offense was very productive from three-point land, pouring in eight threes on 15 attempts (53.3%). Deja Johnson, making her season debut) was the most prolific shooter for the Lady Chaps, draining two treys en route to an eight-point performance.

Lubbock Christian's defense held King (TN) to only 7.7% shooting from beyond the arc (1/13) and 23.5% from the field (12/51). The Tornado received 12 points and nine rebounds in the loss from Ashley Allen.

How It Happened

After falling behind 2-0, Lubbock Christian went on a 5-0 run with 8:17 left in the first quarter, culminating in a bucket from Maci Maddox, to take a 5-2 lead. The Lady Chaps then lost some of that lead, but still entered the quarter break with a 13-12 advantage. Lubbock Christian did most of its first quarter damage in the paint, scoring eight of its 13 points close to the basket. Allen had nine of the team's 12 points, while LCU was mostly paced in the frame by Maddox, who had eight in the quarter.

Lubbock Christian kept its first quarter lead intact before going on a 7-0 run starting at the 8:58 mark in the second period to increase its lead to 20-12. The Lady Chaps proceeded to tack on five points to that lead and enjoyed a 36-23 advantage heading into halftime. Lubbock Christian saw non-starters score seven of its 23 total points off the bench in the quarter (five from Audrey Spurgin). Maddox and Audrey Robertson each had six points in the quarter, with Maddox finishing with all 14 of her points in the first half. LCU was 9-of-15 (60%) shooting in the second quarter, while they held King to two field goals (2-of-13, 15.4%) in the quarter.

Following intermission, Lubbock Christian continued to expand its advantage, pushing it to 57-30 before going on a 7-0 run to expand its lead further to 64-30 with 39 seconds to go in the third. Before the conclusion of the third period, the Tornados had cut into that lead somewhat, but the Lady Chaps still entered the fourth quarter with a 64-32 edge. Lubbock Christian took advantage of eight King (TN) turnovers in the quarter, scoring 12 points off of takeaways. Nine different Lady Chaps chipped in offensively in the quarter, with Allen scoring seven points to lead the Lady Chaps, who out-scored King 28-9 in the frame.

Lubbock Christian kept widening that lead, expanding it to 75-40 before going on a 7-0 run to grow the lead to 82-40 with 2:03 to go in the contest. Playing mostly with bench players, Lubbock Christian received points from eight different Lady Chaps in the quarter and they held King to one field goal in the quarter (1/12, 8.3%). The Tornado went the final 5:34 without a field goal.

King (TN) 42 • 0-5,0-0 Conferen																
#	Player	Total			3-Ptr		Rebounds			PF	TP	A	TO	Blk	Stl	Min
		FG-FGA	FG-FGA	FT-FTA	Off	Def	Total	Off	Def							
02	Alexa Gramann	9	0-2	0-0	0-0	3	3	6	1	0	1	1	0	0	0	21
05	Brianna Dunbar	9	1-4	0-1	6-6	0	1	1	0	8	0	3	0	2	18	
11	Alayna Smith	9	0-4	0-0	0-0	0	1	1	3	0	0	4	0	0	13	
12	Jaden Potts	9	0-1	0-0	1-2	1	1	2	0	1	0	0	0	0	22	
22	Ashley Allen	9	5-7	0-0	2-3	4	5	9	1	12	1	1	1	1	23	
01	Michelle Gallegos	0	0-0	0-0	2-2	0	1	1	1	2	0	0	0	0	6	
03	Jhayda McKinney	0	0-3	0-0	0-0	0	1	1	1	0	0	2	0	0	16	
04	Jaylasia Office	2	2-6	0-4	2-2	0	0	0	3	6	1	3	0	0	18	
13	Kiley Beach	1	1-2	0-0	1-2	1	2	3	1	3	0	0	0	0	6	
15	Jaelyn West	2	2-10	1-3	2-6	1	2	3	2	7	0	2	0	1	22	
24	Torey Walker	0	0-4	0-0	0-2	1	2	3	3	0	0	0	1	0	13	
32	Raven Addison	1	1-6	0-0	1-2	1	1	2	1	3	0	1	0	1	17	
33	Maddie Bryant	0	0-2	0-0	0-0	0	0	0	0	0	0	0	0	0	5	
Team						5	1	6								
Totals		12-51	1-13	17-29	17	21	38	17	42	3	19	2	5	200		
1st - FG %:		5-13	38.5%	2nd: 2-13	15.4%	3rd: 4-13	30.8%	4th: 1-12	8.3%	Game: 12-51 23.5%					Deadball Rebounds 6	
3FG %:		1-4	25.0%	0-3	0.0%	0-1	0.0%	0-5	0.0%	1-13 7.7%						
FT %:		1-3	33.3%	7-10	70.0%	1-2	50.0%	8-14	57.1%	17-29 58.6%						
Lubbock Christian 82 • 5-1,0-0 Lone Sta																
#	Player	Total			3-Ptr		Rebounds			PF	TP	A	TO	Blk	Stl	Min
		FG-FGA	FG-FGA	FT-FTA	Off	Def	Total	Off	Def							
00	Grace Foster	f	4-10	1-2	0-0	0	5	5	0	9	2	1	0	1	17	
23	Martie McCoy	f	1-2	0-0	2-2	0	3	3	3	4	4	1	0	1	16	
02	Maci Maddox	f	6-8	1-1	1-2	0	3	3	1	14	1	0	0	1	21	
03	Audrey Robertson	g	3-4	1-2	1-1	0	1	1	1	8	3	1	0	0	15	
15	Shaylee Stovall	f	1-1	0-0	0-0	0	1	1	1	3	4	0	0	0	17	
01	Kennedy Chappell	2	2-6	0-2	0-0	0	1	2	3	4	1	0	0	2	18	
04	Kimber Mathews	1	1-2	1-1	2-2	1	0	1	3	5	0	0	0	0	11	
11	Taylor Allen	4	4-7	1-1	0-0	2	1	3	0	9	2	0	0	1	13	
12	Taylor Thomas	1	2-2	0-0	3-4	0	0	0	2	5	2	1	0	1	18	
30	Audrey Spurgin	0	0-2	0-0	0-0	0	3	3	1	8	0	0	0	0	13	
31	Tia Johnson	1	1-2	0-1	0-0	0	5	5	2	2	3	2	0	0	15	
33	Deja Johnson	3	3-5	2-4	0-0	0	2	2	3	8	0	1	0	1	15	
40	Reese Schumann	1	1-3	0-0	1-2	2	1	3	0	3	1	3	1	2	13	
Team						0	1	1								
Totals		30-54	8-15	14-19	6	28	34	20	82	23	13	2	10	200		
1st - FG %:		9-15	60.0%	2nd: 9-15	60.0%	3rd: 9-15	60.0%	4th: 7-12	58.3%	Game: 30-54 55.6%					Deadball Rebounds 2	
3FG %:		2-3	66.7%	2-4	50.0%	3-4	75.0%	2-4	50.0%	8-15 53.3%						
FT %:		2-2	100.0%	3-5	60.0%	7-8	87.5%	2-4	50.0%	14-19 73.7%						
Officials: Technical Fouls: King (TN)-None, Lubbock Christian-None. Attendance: 192 2023-24 Women's Basketball, Round: 0, King (TN) vs Lubbock Christian, Played a																
Score by periods		1st	2nd	3rd	4th	Total										
King (TN)		12	11	9	10	42										
Lubbock Christian		13	23	28	18	82										

2023-24 STATISTICS

RECORD:	OVERALL	HOME	AWAY	NEUTRAL
ALL GAMES	5-1	3-1	1-0	1-0
CONFERENCE	0-0	0-0	0-0	0-0
NON-CONFERENCE	5-1	3-1	1-0	1-0

#	Player	gp-gs	min	avg	Total		3-Point		F-Throw		Rebounds								a	to	blk	stl	pts	avg
					fg-fga	fg%	3fg-fga	3fg%	ft-fa	ft%	off	def	tot	avg	pf	dq								
00	Grace Foster	6-6	187	31.2	26-57	.456	5-15	.333	39-43	.907	2	41	43	7.2	9	0	16	30	4	1	96	16.0		
01	Kennedy Chappell	6-0	92	15.3	9-18	.500	0-5	.000	11-15	.733	3	7	10	1.7	7	0	4	3	0	4	29	4.8		
02	Maci Maddox	6-6	222	37.0	37-75	.493	6-14	.429	11-12	.917	4	22	26	4.3	10	0	20	14	0	15	91	15.2		
03	Audrey Robertson	6-5	179	29.8	26-47	.553	6-12	.500	11-14	.786	3	19	22	3.7	11	0	16	13	0	8	69	11.5		
04	Kimber Mathews	1-0	11	11.0	1-2	.500	1-1	1.000	2-2	1.000	1	0	1	1.0	3	0	0	0	0	0	5	5.0		
11	Taylor Allen	1-0	13	13.0	4-7	.571	1-1	1.000	0-0	.000	2	1	3	3.0	0	0	2	0	0	1	9	9.0		
12	Taylor Thomas	6-1	83	13.8	7-14	.500	2-4	.500	8-9	.889	2	6	8	1.3	8	1	5	6	0	5	24	4.0		
15	Shaylee Stovall	6-6	146	24.3	10-26	.385	6-16	.375	13-14	.929	2	3	5	0.8	8	0	10	5	0	8	39	6.5		
23	Martie McCoy	6-6	121	20.2	8-20	.400	0-3	.000	6-7	.857	2	17	19	3.2	17	0	10	10	4	3	22	3.7		
30	Audrey Spurgin	6-0	72	12.0	8-17	.471	0-0	.000	8-14	.571	6	11	17	2.8	12	0	1	5	1	1	24	4.0		
31	Tia Johnson	4-0	21	5.3	1-2	.500	0-1	.000	0-0	.000	0	5	5	1.3	3	0	4	5	0	0	2	0.5		
33	Deja Johnson	1-0	15	15.0	3-5	.600	2-4	.500	0-0	.000	0	2	2	2.0	3	0	0	1	0	1	8	8.0		
40	Reese Schumann	6-0	63	10.5	3-9	.333	0-0	.000	4-6	.667	6	5	11	1.8	9	0	3	4	2	4	10	1.7		
Team											3	14	17				7							
Total.....		6	1225		143-299	.478	29-76	.382	113-136	.831	36	153	189	31.5	100	1	91	103	11	51	428	71.3		
Opponents.....		6	1225		127-339	.375	39-121	.322	77-110	.700	77	129	206	34.3	129	1	66	111	16	54	370	61.7		

TEAM STATISTICS	LCU	OPP
SCORING	428	370
Points per game	71.3	61.7
Scoring margin	+9.7	-
FIELD GOALS-ATT	143-299	127-339
Field goal pct	.478	.375
3 POINT FG-ATT	29-76	39-121
3-point FG pct	.382	.322
3-pt FG made per game	4.8	6.5
FREE THROWS-ATT	113-136	77-110
Free throw pct	.831	.700
F-Throws made per game	18.8	12.8
REBOUNDS	189	206
Rebounds per game	31.5	34.3
Rebounding margin	-2.8	-
ASSISTS	91	66
Assists per game	15.2	11.0
TURNOVERS	103	111
Turnovers per game	17.2	18.5
Turnover margin	+1.3	-
Assist/turnover ratio	0.9	0.6
STEALS	51	54
Steals per game	8.5	9.0
BLOCKS	11	16
Blocks per game	1.8	2.7
ATTENDANCE	1034	191
Home games-Avg/Game	4-258	1-126
Neutral site-Avg/Game	-	1-65

Date	Opponent		Score	Att.
11/03/23	UNION (TN)	L	78-87	347
11/05/23	ADAMS ST.	W	69-65	287
11/10/23	at Colo. Christian	Wot	67-62	126
11/11/23	vs CSU Pueblo	W	71-60	65
11/17/23	SOUTHWESTERN OKLA.	W	61-54	208
11/18/23	KING (TN)	W	82-42	192

* - Conference game

Score by Periods	1st	2nd	3rd	4th	OT	Totals
Lubbock Christian	107	112	105	94	10	428
Opponents	102	86	90	87	5	370

CONFERENCE STATISTICS

HOME STATISTICS

#	Player	gp-gs	min	avg	Total		3-Point		F-Throw		Rebounds										pts	avg
					fg-ga	fg%	3fg-ga	3fg%	ft-fa	ft%	off	def	tot	avg	pf	dq	a	to	blk	stl		
00	Grace Foster	4-4	123	30.8	20-43	.465	4-11	.364	19-22	.864	1	28	29	7.3	5	0	13	18	3	1	63	15.8
01	Kennedy Chappell	4-0	60	15.0	5-13	.385	0-4	.000	7-9	.778	2	4	6	1.5	6	0	3	1	0	3	17	4.3
02	Maci Maddox	4-4	138	34.5	26-43	.605	4-7	.571	3-4	.750	1	13	14	3.5	6	0	11	8	0	7	59	14.8
03	Audrey Robertson	4-3	107	26.8	16-31	.516	3-7	.429	5-6	.833	1	7	8	2.0	7	0	12	7	0	5	40	10.0
04	Kimber Mathews	1-0	11	11.0	1-2	.500	1-1	1.000	2-2	1.000	1	0	1	1.0	3	0	0	0	0	0	5	5.0
11	Taylor Allen	1-0	13	13.0	4-7	.571	1-1	1.000	0-0	.000	2	1	3	3.0	0	0	2	0	0	1	9	9.0
12	Taylor Thomas	4-1	64	16.0	5-11	.455	2-3	.667	7-8	.875	2	5	7	1.8	8	1	4	4	0	4	19	4.8
15	Shaylee Stovall	4-4	97	24.3	7-15	.467	4-8	.500	13-14	.929	2	2	4	1.0	5	0	9	3	0	4	31	7.8
23	Martie McCoy	4-4	86	21.5	6-14	.429	0-3	.000	4-5	.800	1	13	14	3.5	12	0	9	6	4	2	16	4.0
30	Audrey Spurgin	4-0	40	10.0	4-9	.444	0-0	.000	6-10	.600	6	7	13	3.3	5	0	1	3	0	0	14	3.5
31	Tia Johnson	2-0	15	7.5	1-2	.500	0-1	.000	0-0	.000	0	5	5	2.5	3	0	3	5	0	0	2	1.0
33	Deja Johnson	1-0	15	15.0	3-5	.600	2-4	.500	0-0	.000	0	2	2	2.0	3	0	0	1	0	1	8	8.0
40	Reese Schumann	4-0	31	7.8	2-5	.400	0-0	.000	3-4	.750	3	3	6	1.5	4	0	2	4	1	2	7	1.8
Team											1	6	7					6				
Total.....		4	800		100-200	.500	21-50	.420	69-84	.821	23	96	119	29.8	67	1	69	66	8	30	290	72.5
Opponents.....		4	800		83-214	.388	28-75	.373	54-75	.720	46	83	129	32.2	83	0	38	75	11	32	248	62.0

Date	Opponent		Score
11/03/23	UNION (TN)	L	78-87
11/05/23	ADAMS ST.	W	69-65
11/17/23	SOUTHWESTERN OKLA.	W	61-54
11/18/23	KING (TN)	W	82-42

* - Conference game

AWAY STATISTICS

#	Player	Total					3-Point		F-Throw		Rebounds											
		gp-gs	min	avg	fg-fga	fg%	3fg-fga	3fg%	ft-fta	ft%	off	def	tot	avg	pf	dq	a	to	blk	stl	pts	avg
00	Grace Foster	1-1	27	27.0	1-5	.200	0-2	.000	7-8	.875	0	6	6	6.0	4	0	0	7	0	0	9	9.0
01	Kennedy Chappell	1-0	20	20.0	3-4	.750	0-1	.000	4-6	.667	1	2	3	3.0	0	1	0	0	0	0	10	10.0
02	Maci Maddox	1-1	45	45.0	4-14	.286	0-2	.000	4-4	1.000	1	5	6	6.0	3	0	4	1	0	3	12	12.0
03	Audrey Robertson	1-1	40	40.0	6-9	.667	2-2	1.000	2-2	1.000	1	5	6	6.0	2	0	3	2	0	1	16	16.0
12	Taylor Thomas	1-0	11	11.0	0-1	.000	0-1	.000	0-0	.000	0	0	0	0.0	0	0	0	2	0	1	0	0.0
15	Shaylee Stovall	1-1	20	20.0	3-6	.500	2-4	.500	0-0	.000	0	1	1	1.0	1	0	1	1	0	1	8	8.0
23	Martie McCoy	1-1	27	27.0	2-4	.500	0-0	.000	2-2	1.000	1	4	5	5.0	3	0	1	3	0	0	6	6.0
30	Audrey Spurgin	1-0	22	22.0	2-5	.400	0-0	.000	2-4	.500	0	2	2	2.0	3	0	0	2	1	1	6	6.0
31	Tia Johnson	1-0	4	4.0	0-0	.000	0-0	.000	0-0	.000	0	0	0	0.0	0	0	1	0	0	0	0	0.0
40	Reese Schumann	1-0	9	9.0	0-1	.000	0-0	.000	0-0	.000	1	1	2	2.0	1	0	0	0	1	0	0	0.0
Team											1	4	5					1				
Total.....		1	225		21-49	.429	4-12	.333	21-26	.808	6	30	36	36.0	17	0	11	19	2	7	67	67.0
Opponents.....		1	225		22-63	.349	9-28	.321	9-16	.563	15	24	39	39.0	25	0	13	17	0	12	62	62.0

Date	Opponent		Score
11/10/23	at Colo. Christian	Wot	67-62

* - Conference game

NEUTRAL SITE STATISTICS

#	Player	Total					3-Point		F-Throw		Rebounds					a	to	blk	stl	pts	avg	
		gp-gs	min	avg	fg-fga	fg%	3fg-fga	3fg%	ft-fa	ft%	off	def	tot	avg	pf							dq
00	Grace Foster	1-1	37	37.0	5-9	.556	1-2	.500	13-13	1.000	1	7	8	8.0	0	0	3	5	1	0	24	24.0
01	Kennedy Chappell	1-0	12	12.0	1-1	1.000	0-0	.000	0-0	.000	0	1	1	1.0	1	0	0	2	0	1	2	2.0
02	Maci Maddox	1-1	39	39.0	7-18	.389	2-5	.400	4-4	1.000	2	4	6	6.0	1	0	5	5	0	5	20	20.0
03	Audrey Robertson	1-1	32	32.0	4-7	.571	1-3	.333	4-6	.667	1	7	8	8.0	2	0	1	4	0	2	13	13.0
12	Taylor Thomas	1-0	8	8.0	2-2	1.000	0-0	.000	1-1	1.000	0	1	1	1.0	0	0	1	0	0	0	5	5.0
15	Shaylee Stovall	1-1	29	29.0	0-5	.000	0-4	.000	0-0	.000	0	0	0	0.0	2	0	0	1	0	3	0	0.0
23	Martie McCoy	1-1	8	8.0	0-2	.000	0-0	.000	0-0	.000	0	0	0	0.0	2	0	0	1	0	1	0	0.0
30	Audrey Spurgin	1-0	10	10.0	2-3	.667	0-0	.000	0-0	.000	0	2	2	2.0	4	0	0	0	0	0	4	4.0
31	Tia Johnson	1-0	2	2.0	0-0	.000	0-0	.000	0-0	.000	0	0	0	0.0	0	0	0	0	0	0	0	0.0
40	Reese Schumann	1-0	23	23.0	1-3	.333	0-0	.000	1-2	.500	2	1	3	3.0	4	0	1	0	0	2	3	3.0
Team											1	4	5									
Total.....		1	200		22-50	.440	4-14	.286	23-26	.885	7	27	34	34.0	16	0	11	18	1	14	71	71.0
Opponents.....		1	200		22-62	.355	2-18	.111	14-19	.737	16	22	38	38.0	21	1	15	19	5	10	60	60.0

Date	Opponent		Score
11/11/23	vs CSU Pueblo	W	71-60

* - Conference game

LUBBOCK CHRISTIAN UNIVERSITY WOMEN'S BASKETBALL GAME NOTES

LCU RECORD WHEN...

At home	3-1
On the road	1-0
Neutral site.....	1-0
Lone Star Conference	0-0

Monday	0-0
Tuesday.....	0-0
Wednesday	0-0
Thursday	0-0
Friday.....	2-1
Saturday.....	2-0
Sunday	1-0

Against ranked opponents.....	0-1
Top 5 opponents	0-0
Top 10 opponents	0-0

Scoring

70-plus points	2-1
60-69 points	3-0
50-59 points	0-0
49 or less points.....	0-0

Allowing

70-plus points	0-1
60-69 points	3-0
50-59 points	1-0
49 or less points.....	1-0

Shooting

50% or better	2-1
40-49%	3-0
30-39%	0-0
29.9% or less	0-2

Opponents Shooting

50% or better	0-0
40-49%	1-1
30-39%	3-0
29.9% or less	1-0

Percentages From The Field

Out-shooting the opponent	4-1
Opponents out-shoot LCU	1-0
Tied	0-0

Rebounding

Out-rebound an opponent.....	1-1
Opponent out-rebounds LCU	4-0
Tied	0-0

Turnovers

Commit 15 or less turnovers	2-0
Commit more than 15 turnovers.....	3-1
Force 15 or less turnovers.....	0-0
Force more than 15	5-1

Misc.

When Leading after the 1st Quarter.....	4-0
When Tied after the 1st Quarter.....	0-0
When Trailing after the 1st Quarter.....	1-1

When Leading at halftime	4-0
When Tied at halftime	0-0
When Trailing at halftime	1-1

When Leading after the 3rd Quarter	4-0
When Tied after the 3rd Quarter	1-0
When Trailing after the 3rd Quarter	0-1
Overtime	1-0

Lubbock Christian Team Game-by-Game Comparison (as of Nov 24, 2023)

Home games

Opponent	1st	2nd	Score	Mar	Total FG	FG Pct	3-Pointers	3FG Pct	Free Throws	FT Pct	Rebounds	Assist	T/Over	Block	Steal	Fouls	
UNION (TN)	36/44	42/43	78-87	(9)	28-54/28-57	.519/.491	2-10/12-25	.200/.480	20-28/19-25	.714/.760	32/29	+3	19/14	19/19	2/2	5/6	23/29
ADAMS ST.	39/31	30/34	69-65	+4	20-48/22-51	.417/.431	7-15/8-17	.467/.471	22-23/13-14	.957/.929	22/36	(14)	12/13	12/19	2/4	9/6	14/21
SOUTHWESTERN OKLA.	36/28	25/26	61-54	+7	22-44/21-55	.500/.382	4-10/7-20	.400/.350	13-14/5-7	.929/.714	31/26	+5	15/8	22/18	2/3	6/15	10/16
KING (TN)	36/23	46/19	82-42	+40	30-54/12-51	.556/.235	8-15/1-13	.533/.077	14-19/17-29	.737/.586	34/38	(4)	23/3	13/19	2/2	10/5	20/17

Note: Game totals are displayed in the format TEAM/OPPONENT for each category

Lubbock Christian Points-Rebounds-Assists (as of Nov 24, 2023)
All games

				00	01	02	03	04	11	12
Opponent	Date	Score		FOSTER, GRA	CHAPPELL, K	MADDOX, MAC	ROBERTSON,	MATHEWS, KI	ALLEN, TAYL	THOMAS, TAY
UNION (TN)	11/03/23	78-87	L	16-7-4	8-2-1	16-4-4	12-3-2	DNP	DNP	9-3-1
ADAMS ST.	11/05/23	69-65	W	28-8-3	2-0-1	14-4-4	6-2-1	DNP	DNP	3-3-0
at Colo. Christian	11/10/23	67-62	W	9-6-0	10-3-1	12-6-4	16-6-3	DNP	DNP	0-0-0
vs CSU Pueblo	11/11/23	71-60	W	24-8-3	2-1-0	20-6-5	13-8-1	DNP	DNP	5-1-1
SOUTHWESTERN OKLA.	11/17/23	61-54	W	10-9-4	3-1-0	15-3-2	14-2-6	DNP	DNP	2-1-1
KING (TN)	11/18/23	82-42	W	9-5-2	4-3-1	14-3-1	8-1-3	5-1-0	9-3-2	5-0-2

				15	23	30	31	33	40
Opponent	Date	Score		STOVALL, SH	MCCOY, MART	SPURGIN, AU	JOHNSON, TI	JOHNSON, DE	SCHUMANN, R
UNION (TN)	11/03/23	78-87	L	7-2-3	4-3-4	4-4-0	DNP	DNP	2-0-0
ADAMS ST.	11/05/23	69-65	W	11-0-2	5-5-1	0-0-0	DNP	DNP	0-0-0
at Colo. Christian	11/10/23	67-62	W	8-1-1	6-5-1	6-2-0	0-0-1	DNP	0-2-0
vs CSU Pueblo	11/11/23	71-60	W	0-0-0	0-0-0	4-2-0	0-0-0	DNP	3-3-1
SOUTHWESTERN OKLA.	11/17/23	61-54	W	10-1-0	3-3-0	2-6-1	0-0-0	DNP	2-3-1
KING (TN)	11/18/23	82-42	W	3-1-4	4-3-4	8-3-0	2-5-3	8-2-0	3-3-1

LCU - TEAM GAME HIGHS

POINTS	82	KING (TN) (11/18/23)
	78	UNION (TN) (11/03/23)
	71	vs CSU Pueblo (11/11/23)
	69	ADAMS ST. (11/05/23)
	67	at Colo. Christian (11/10/23)
FIELD GOALS MADE	30	KING (TN) (11/18/23)
	28	UNION (TN) (11/03/23)
FIELD GOAL ATTEMPTS	54	KING (TN) (11/18/23)
	54	UNION (TN) (11/03/23)
FIELD GOAL PERCENTAGE	.556 (30-54)	KING (TN) (11/18/23)
	.519 (28-54)	UNION (TN) (11/03/23)
3 PT FIELD GOALS MADE	8	KING (TN) (11/18/23)
	7	ADAMS ST. (11/05/23)
3 PT FG ATTEMPTS	15	KING (TN) (11/18/23)
	15	ADAMS ST. (11/05/23)
3 PT FG PERCENTAGE	.533 (8-15)	KING (TN) (11/18/23)
	.467 (7-15)	ADAMS ST. (11/05/23)
FREE THROWS MADE	23	vs CSU Pueblo (11/11/23)
	22	ADAMS ST. (11/05/23)
FREE THROW ATTEMPTS	28	UNION (TN) (11/03/23)
	26	vs CSU Pueblo (11/11/23)
	26	at Colo. Christian (11/10/23)
FREE THROW PERCENTAGE	.957 (22-23)	ADAMS ST. (11/05/23)
	.929 (13-14)	SOUTHWESTERN OKLA. (11/17/23)
REBOUNDS	36	at Colo. Christian (11/10/23)
	34	KING (TN) (11/18/23)
	34	vs CSU Pueblo (11/11/23)
ASSISTS	23	KING (TN) (11/18/23)
	19	UNION (TN) (11/03/23)
STEALS	14	vs CSU Pueblo (11/11/23)
	10	KING (TN) (11/18/23)
BLOCKED SHOTS	2	KING (TN) (11/18/23)
	2	SOUTHWESTERN OKLA. (11/17/23)
	2	at Colo. Christian (11/10/23)
	2	ADAMS ST. (11/05/23)
	2	UNION (TN) (11/03/23)
TURNOVERS	22	SOUTHWESTERN OKLA. (11/17/23)
	19	at Colo. Christian (11/10/23)
	19	UNION (TN) (11/03/23)
FOULS	23	UNION (TN) (11/03/23)
	20	KING (TN) (11/18/23)

LCU - TEAM GAME LOWS

POINTS	61	SOUTHWESTERN OKLA. (11/17/23)
	67	at Colo. Christian (11/10/23)
	69	ADAMS ST. (11/05/23)
	71	vs CSU Pueblo (11/11/23)
	78	UNION (TN) (11/03/23)
FIELD GOALS MADE	20	ADAMS ST. (11/05/23)
	21	at Colo. Christian (11/10/23)
FIELD GOAL ATTEMPTS	44	SOUTHWESTERN OKLA. (11/17/23)
	48	ADAMS ST. (11/05/23)
FIELD GOAL PERCENTAGE	.417 (20-48)	ADAMS ST. (11/05/23)
	.429 (21-49)	at Colo. Christian (11/10/23)
3 PT FIELD GOALS MADE	2	UNION (TN) (11/03/23)
	4	at Colo. Christian (11/10/23)
	4	vs CSU Pueblo (11/11/23)
	4	SOUTHWESTERN OKLA. (11/17/23)
3 PT FG ATTEMPTS	10	UNION (TN) (11/03/23)
	10	SOUTHWESTERN OKLA. (11/17/23)
3 PT FG PERCENTAGE	.200 (2-10)	UNION (TN) (11/03/23)
	.286 (4-14)	vs CSU Pueblo (11/11/23)
FREE THROWS MADE	13	SOUTHWESTERN OKLA. (11/17/23)
	14	KING (TN) (11/18/23)
FREE THROW ATTEMPTS	14	SOUTHWESTERN OKLA. (11/17/23)
	19	KING (TN) (11/18/23)
FREE THROW PERCENTAGE	.714 (20-28)	UNION (TN) (11/03/23)
	.737 (14-19)	KING (TN) (11/18/23)
REBOUNDS	22	ADAMS ST. (11/05/23)
	31	SOUTHWESTERN OKLA. (11/17/23)
ASSISTS	11	at Colo. Christian (11/10/23)
	11	vs CSU Pueblo (11/11/23)
STEALS	5	UNION (TN) (11/03/23)
	6	SOUTHWESTERN OKLA. (11/17/23)
BLOCKED SHOTS	1	vs CSU Pueblo (11/11/23)
	2	UNION (TN) (11/03/23)
	2	ADAMS ST. (11/05/23)
	2	at Colo. Christian (11/10/23)
	2	SOUTHWESTERN OKLA. (11/17/23)
	2	KING (TN) (11/18/23)
TURNOVERS	12	ADAMS ST. (11/05/23)
	13	KING (TN) (11/18/23)
FOULS	10	SOUTHWESTERN OKLA. (11/17/23)
	14	ADAMS ST. (11/05/23)

LCU OPPONENT - TEAM GAME HIGHS

POINTS	87	UNION (TN) (11/03/23)
	65	ADAMS ST. (11/05/23)
	62	at Colo. Christian (11/10/23)
	60	vs CSU Pueblo (11/11/23)
	54	SOUTHWESTERN OKLA. (11/17/23)
FIELD GOALS MADE	28	UNION (TN) (11/03/23)
	22	vs CSU Pueblo (11/11/23)
	22	at Colo. Christian (11/10/23)
	22	ADAMS ST. (11/05/23)
FIELD GOAL ATTEMPTS	63	at Colo. Christian (11/10/23)
	62	vs CSU Pueblo (11/11/23)
FIELD GOAL PERCENTAGE	.491 (28-57)	UNION (TN) (11/03/23)
	.431 (22-51)	ADAMS ST. (11/05/23)
3 PT FIELD GOALS MADE	12	UNION (TN) (11/03/23)
	9	at Colo. Christian (11/10/23)
3 PT FG ATTEMPTS	28	at Colo. Christian (11/10/23)
	25	UNION (TN) (11/03/23)
3 PT FG PERCENTAGE	.480 (12-25)	UNION (TN) (11/03/23)
	.471 (8-17)	ADAMS ST. (11/05/23)
FREE THROWS MADE	19	UNION (TN) (11/03/23)
	17	KING (TN) (11/18/23)
FREE THROW ATTEMPTS	29	KING (TN) (11/18/23)
	25	UNION (TN) (11/03/23)
FREE THROW PERCENTAGE	.929 (13-14)	ADAMS ST. (11/05/23)
	.760 (19-25)	UNION (TN) (11/03/23)
REBOUNDS	39	at Colo. Christian (11/10/23)
	38	KING (TN) (11/18/23)
	38	vs CSU Pueblo (11/11/23)
ASSISTS	15	vs CSU Pueblo (11/11/23)
	14	UNION (TN) (11/03/23)
STEALS	15	SOUTHWESTERN OKLA. (11/17/23)
	12	at Colo. Christian (11/10/23)
BLOCKED SHOTS	5	vs CSU Pueblo (11/11/23)
	4	ADAMS ST. (11/05/23)
TURNOVERS	19	KING (TN) (11/18/23)
	19	vs CSU Pueblo (11/11/23)
	19	ADAMS ST. (11/05/23)
	19	UNION (TN) (11/03/23)
FOULS	29	UNION (TN) (11/03/23)
	25	at Colo. Christian (11/10/23)

LCU OPPONENT - TEAM GAME LOWS

POINTS	42	KING (TN) (11/18/23)
	54	SOUTHWESTERN OKLA. (11/17/23)
	60	vs CSU Pueblo (11/11/23)
	62	at Colo. Christian (11/10/23)
	65	ADAMS ST. (11/05/23)
FIELD GOALS MADE	12	KING (TN) (11/18/23)
	21	SOUTHWESTERN OKLA. (11/17/23)
FIELD GOAL ATTEMPTS	51	ADAMS ST. (11/05/23)
	51	KING (TN) (11/18/23)
FIELD GOAL PERCENTAGE	.235 (12-51)	KING (TN) (11/18/23)
	.349 (22-63)	at Colo. Christian (11/10/23)
3 PT FIELD GOALS MADE	1	KING (TN) (11/18/23)
	2	vs CSU Pueblo (11/11/23)
3 PT FG ATTEMPTS	13	KING (TN) (11/18/23)
	17	ADAMS ST. (11/05/23)
3 PT FG PERCENTAGE	.077 (1-13)	KING (TN) (11/18/23)
	.111 (2-18)	vs CSU Pueblo (11/11/23)
FREE THROWS MADE	5	SOUTHWESTERN OKLA. (11/17/23)
	9	at Colo. Christian (11/10/23)
FREE THROW ATTEMPTS	7	SOUTHWESTERN OKLA. (11/17/23)
	14	ADAMS ST. (11/05/23)
FREE THROW PERCENTAGE	.563 (9-16)	at Colo. Christian (11/10/23)
	.586 (17-29)	KING (TN) (11/18/23)
REBOUNDS	26	SOUTHWESTERN OKLA. (11/17/23)
	29	UNION (TN) (11/03/23)
ASSISTS	3	KING (TN) (11/18/23)
	8	SOUTHWESTERN OKLA. (11/17/23)
STEALS	5	KING (TN) (11/18/23)
	6	UNION (TN) (11/03/23)
	6	ADAMS ST. (11/05/23)
BLOCKED SHOTS	0	at Colo. Christian (11/10/23)
	2	UNION (TN) (11/03/23)
	2	KING (TN) (11/18/23)
TURNOVERS	17	at Colo. Christian (11/10/23)
	18	SOUTHWESTERN OKLA. (11/17/23)
FOULS	16	SOUTHWESTERN OKLA. (11/17/23)
	17	KING (TN) (11/18/23)

WHERE LCU STATISTICALLY RANKS NATIONALLY



Division II



TEAM

STATISTIC	National Rank	Conference Rank	Value	National Leader	Value	Conference leader	Value
Assist/Turnover Ratio (291 ranked)	101	6	0.88	Embry-Riddle (FL)	1.83	Tex. Permian Basin	1.33
Assists Per Game (291 ranked)	73	4	15.2	West Ga.	24.0	Tex. A&M Int'l	21.0
Blocks Per Game (290 ranked)	218	12	1.8	Minn. Duluth	10.0	West Tex. A&M	3.8
Field Goal Percentage (291 ranked)	15	2	47.8	Drury	52.0	Tex. A&M Int'l	48.1
Field Goal Percentage Defense (291 ranked)	99	5	37.5	Dist. Columbia	29.9	UT Tyler	33.1
Fouls Per Game (291 ranked)	79	6	16.7	AUM	9.7	West Tex. A&M	13.8
Free Throw Attempts Per Game (291 ranked)	54	2	22.67	Rockhurst	37.00	Midwestern St.	24.75
Free Throw Percentage (291 ranked)	9	2	83.1	Cal State LA	90.6	Cameron	87.5
Free Throws Made Per Game (291 ranked)	12	1	18.83	Rockhurst	25.00	Lubbock Christian	18.83
Rebound Margin (291 ranked)	202	13	-2.8	St. Cloud St.	25.0	Tex. A&M Int'l	6.0
Rebounds (Defensive) Per Game (291 ranked)	153	9	25.5	Minn.-Crookston	36.8	Angelo St.	29.8
Rebounds (Offensive) Per Game (291 ranked)	286	16	6.0	Miles			
Rebounds Per Game (291 ranked)	265	15	31.50	Savannah St.	23.5	Midwestern St.	19.0
Scoring Defense (291 ranked)	104	6	61.7	Savannah St.	58.00	Okla. Christian	41.33
Scoring Margin (291 ranked)	86	6	9.7	St. Cloud St.	32.0	UT Tyler	51.8
Scoring Offense (291 ranked)	88	4	71.3	Southern Ark.	42.4	Tex. A&M Int'l	27.0
Steals Per Game (290 ranked)	147	11	8.5	Union (TN)	103.4	Tex. A&M Int'l	94.0
Three Point Attempts Per Game (291 ranked)	275	16	12.7	Southern Ark.	25.2	Tex. A&M Int'l	18.5
Three Point Percentage (291 ranked)	31	1	38.2	West Liberty	34.8	Tex. A&M Int'l	26.8
Three Point Percentage Defense (291 ranked)	186	10	32.2	Wingate	50.0	Lubbock Christian	38.2
Three Pointers Per Game (289 ranked)	198	11	4.8	Caldwell	7.5	Texas Woman's	25.0
Turnover Margin (291 ranked)	137	13	1.33	Union (TN)	13.8	Tex. A&M Int'l	10.2
Turnovers Forced Per Game (291 ranked)	119	9	18.50	Southern Ark.	18.00	Tex. A&M Int'l	10.00
Turnovers Per Game (291 ranked)	142	10	17.2	Southern Ark.	39.00	Tex. A&M Int'l	33.67
Winning Percentage (258 ranked)	45	4	83.3	Lewis	8.3	Texas Woman's	12.0
				42 teams tied	100.0	UT Tyler	12.0
						Tex. A&M Int'l	
						Texas Woman's	
						Western N.M.	100.0

INDIVIDUAL

STATISTIC	Player	Nat. Rank	Conf. Rank	Value	National Leader	Value	Conference Leader	Value
Assist/Turnover Ratio (299 ranked)	Shaylee Stovall	175	10	2	Kensley Benjamin, Dist. Columbia	9	Morgan Helgesen, Tex. Permian Basin	3.5
Assists (244 ranked)	Maci Maddox	48	7	20	Kylie Kravig, Colorado Mesa	37	Alyssa O' Malley, Tex. A&M-Kingsville	3.5
	Grace Foster	112	10	16			Grace Alvarez, West Tex. A&M	27
	Audrey Robertson	112	10	16			Sawyer Lloyd, Angelo St.	27
Assists Per Game (215 ranked)	Maci Maddox	164	8	3.3	Maizie Taylor, Northwood	7.3	Sawyer Lloyd, Angelo St.	5.4
Blocks (246 ranked)	Grace Foster	152	11	4	Gemma Cutler, Simon Fraser	29	Nyalam Thabach, West Tex. A&M	10
	Martie McCoy	152	11	4			Keniah Williams, Angelo St.	10
Blocks Per Game (150 ranked)					Rhaymi Porter, American Int'l	5	Sinetra Jones, Ark.-Fort Smith	2.25
					Jess Knight, Southern N.H.	5		
Double Doubles (15 ranked)					Olivia Reed, Colorado Mesa	4	4 players tied	2
Field Goal Attempts (242 ranked)	Maci Maddox	33	2	75	Asher Cai, Central Wash.	144	Raiana Brown, Tex. A&M Int'l	76
	Grace Foster	130	11	57				
Field Goal Percentage (250 ranked)	Maci Maddox	122	8	49.3	Megan Crow, Grand Valley St.	79.3	Ashley Ingram, Texas Woman's	70.9
Field Goals (236 ranked)	Maci Maddox	15	3	37	Asher Cai, Central Wash.	52	Raiana Brown, Tex. A&M Int'l	44
	Grace Foster	104	8	26				
	Audrey Robertson	104	8	26				
Free Throw Attempts (207 ranked)	Grace Foster	6	1	43	Lexie Schneider, Mary	62	Grace Foster, Lubbock Christian	43
Free Throw Percentage (250 ranked)	Grace Foster	66	6	90.7	28 players tied	100	Katie King, Cameron	100
Free Throws (212 ranked)	Grace Foster	4	1	39	Lexie Schneider, Mary	55	Ramsey Robledo, St. Mary's (TX)	100
	Shaylee Stovall	212	15	13			Grace Foster, Lubbock Christian	39
Minutes Per Game (250 ranked)	Maci Maddox	24	2	36.76	Azariah Binford, Bluefield St.	42.41	Shamica Smith, Cameron	37.72
Points Per Game (244 ranked)	Grace Foster	133	8	16	Christiane Frye, Seton Hill	24.8	Shamica Smith, Cameron	21.7
	Maci Maddox	175	11	15.2	Alayzha Knapp, Rogers St.	24.8		
Rebounds (245 ranked)	Grace Foster	40	2	43	Olivia Reed, Colorado Mesa	87	Zarria Carter, Midwestern St.	45
Rebounds (Defensive) Per Game (246 ranked)	Grace Foster	43	3	6.8	Grace Bradford, Lake Superior St.	9.8	Taylor Haggan, St. Mary's (TX)	9
Rebounds (Offensive) Per Game (240 ranked)					Kamari Thompson, Coker	6.8	Zarria Carter, Midwestern St.	5.2
Rebounds Per Game (250 ranked)	Grace Foster	202	10	7.2	Ryan Franklin, Mo. Southern St.	13	Taylor Haggan, St. Mary's (TX)	13
					Taylor Haggan, St. Mary's (TX)	13		
Steals (208 ranked)	Maci Maddox	16	2	15	Telisha Brown, Tex. A&M Int'l	23	Telisha Brown, Tex. A&M Int'l	23
	Audrey Robertson	208	23	8				
	Shaylee Stovall	208	23	8				
	Maci Maddox	119	7	2.5	Chiara Fusari, Barry	5.33	Telisha Brown, Tex. A&M Int'l	3.83
Steals Per Game (208 ranked)					Asher Cai, Central Wash.	64	Malea Jackson, Tex. A&M Int'l	35
Three Point Attempts (249 ranked)					Kaylee Jones, Mississippi Col.	80	Bridgette Tello, Tex. A&M Int'l	57.7
Three Point Percentage (224 ranked)					Faith Newton, Rollins	80		
Three Pointers (235 ranked)					Elisa Saffold, Albany St. (GA)	20	Azia Himeur, West Tex. A&M	16
					Corinne Thomas, West Liberty	20		
Three Pointers Per Game (250 ranked)					Sierra Bermudez, California (PA)	4.25	Azia Himeur, West Tex. A&M	2.67
Triple Doubles (1 ranked)					Sawyer Lloyd, Angelo St.	1	Sawyer Lloyd, Angelo St.	1

LUBBOCK CHRISTIAN UNIVERSITY WOMEN'S BASKETBALL GAME NOTES

Lubbock Christian Overall/Conference Statistics (as of Nov 24, 2023)

All games

SUMMARY	Overall Statistics										Conference Statistics									
	gp-gs	min/g	fg%	3fg%	ft%	r/g	a/g	stl	blk	pts/g	gp-gs	min/g	fg%	3fg%	ft%	r/g	a/g	stl	blk	pts/g
Grace Foster	6-6	31.2	.456	.333	.907	7.2	2.7	1	4	16.0										
Kennedy Chappell	6-0	15.3	.500	.000	.733	1.7	0.7	4	0	4.8										
Maci Maddox	6-6	37.0	.493	.429	.917	4.3	3.3	15	0	15.2										
Audrey Robertson	6-5	29.8	.553	.500	.786	3.7	2.7	8	0	11.5										
Kimber Mathews	1-0	11.0	.500	1.000	1.000	1.0	0.0	0	0	5.0										
Taylor Allen	1-0	13.0	.571	1.000	.000	3.0	2.0	1	0	9.0										
Taylor Thomas	6-1	13.8	.500	.500	.889	1.3	0.8	5	0	4.0										
Shaylee Stovall	6-6	24.3	.385	.375	.929	0.8	1.7	8	0	6.5										
Martie McCoy	6-6	20.2	.400	.000	.857	3.2	1.7	3	4	3.7										
Audrey Spurgin	6-0	12.0	.471	.000	.571	2.8	0.2	1	1	4.0										
Tia Johnson	4-0	5.3	.500	.000	.000	1.3	1.0	0	0	0.5										
Deja Johnson	1-0	15.0	.600	.500	.000	2.0	0.0	1	0	8.0										
Reese Schumann	6-0	10.5	.333	.000	.667	1.8	0.5	4	2	1.7										
Totals	6		.478	.382	.831	31.5	15.2	51	11	71.3	0		.000	.000	.000	0.0	0.0	0	0	0.0
Opponent	6		.375	.322	.700	34.3	11.0	54	16	61.7	0		.000	.000	.000	0.0	0.0	0	0	0.0

SCORING	Overall Statistics										Conference Statistics									
	fg-fga	fg%	3fg-fga	3fg%	ft-fa	ft%	pts	pts/g			fg-fga	fg%	3fg-fga	3fg%	ft-fa	ft%	pts	pts/g		
Grace Foster	26-57	.456	5-15	.333	39-43	.907	96	16.0												
Kennedy Chappell	9-18	.500	0-5	.000	11-15	.733	29	4.8												
Maci Maddox	37-75	.493	6-14	.429	11-12	.917	91	15.2												
Audrey Robertson	26-47	.553	6-12	.500	11-14	.786	69	11.5												
Kimber Mathews	1-2	.500	1-1	1.000	2-2	1.000	5	5.0												
Taylor Allen	4-7	.571	1-1	1.000	0-0	.000	9	9.0												
Taylor Thomas	7-14	.500	2-4	.500	8-9	.889	24	4.0												
Shaylee Stovall	10-26	.385	6-16	.375	13-14	.929	39	6.5												
Martie McCoy	8-20	.400	0-3	.000	6-7	.857	22	3.7												
Audrey Spurgin	8-17	.471	0-0	.000	8-14	.571	24	4.0												
Tia Johnson	1-2	.500	0-1	.000	0-0	.000	2	0.5												
Deja Johnson	3-5	.600	2-4	.500	0-0	.000	8	8.0												
Reese Schumann	3-9	.333	0-0	.000	4-6	.667	10	1.7												
Totals	143-299	.478	29-76	.382	113-136	.831	428	71.3			0-0	.000	0-0	.000	0-0	.000	0	0	0.0	
Opponent	127-339	.375	39-121	.322	77-110	.700	370	61.7			0-0	.000	0-0	.000	0-0	.000	0	0	0.0	

TOTALS	Overall Statistics										Conference Statistics									
	o-reb	d-reb	total	pf	fo	a	to	a/to	hi pts		o-reb	d-reb	total	pf	fo	a	to	a/to	hi pts	
Grace Foster	2	41	43	9	0	16	30	0.5	28											
Kennedy Chappell	3	7	10	7	0	4	3	1.3	10											
Maci Maddox	4	22	26	10	0	20	14	1.4	20											
Audrey Robertson	3	19	22	11	0	16	13	1.2	16											
Kimber Mathews	1	0	1	3	0	0	0	0.0	5											
Taylor Allen	2	1	3	0	0	2	0	0.0	9											
Taylor Thomas	2	6	8	8	1	5	6	0.8	9											
Shaylee Stovall	2	3	5	8	0	10	5	2.0	11											
Martie McCoy	2	17	19	17	0	10	10	1.0	6											
Audrey Spurgin	6	11	17	12	0	1	5	0.2	8											
Tia Johnson	0	5	5	3	0	4	5	0.8	2											
Deja Johnson	0	2	2	3	0	0	1	0.0	8											
Reese Schumann	6	5	11	9	0	3	4	0.8	3											
Totals	36	153	189	100	1	91	103	0.9	82		0	0	0	0	0	0	0	0.0	0	
Opponent	77	129	206	129	1	66	111	0.6	87		0	0	0	0	0	0	0	0.0	0	

Lubbock Christian Season/Career Statistics (as of Nov 16, 2023)

All games

SEASON STATISTICS

SUMMARY	gp-gs	min/g	fg%	3fg%	ft%	r/g	a/g	stl	blk	pts/g
Grace Foster	4-4	33.5	.475	.333	.897	7.3	2.5	0	3	19.3
Kennedy Chappell	4-0	15.5	.545	.000	.769	1.5	0.8	1	0	5.5
Maci Maddox	4-4	40.8	.463	.400	1.000	5.0	4.3	12	0	15.5
Audrey Robertson	4-3	33.0	.486	.500	.750	4.8	1.8	7	0	11.8
Taylor Thomas	4-1	13.5	.600	.667	1.000	1.8	0.5	3	0	4.3
Shaylee Stovall	4-4	24.8	.300	.250	.917	0.8	1.5	6	0	6.5
Martie McCoy	4-4	22.8	.375	.000	.750	3.3	1.5	3	2	3.8
Audrey Spurgin	4-0	11.0	.455	.000	.500	2.0	0.0	1	1	3.5
Tia Johnson	2-0	3.0	.000	.000	.000	0.0	0.5	0	0	0.0
Reese Schumann	4-0	10.0	.250	.000	.750	1.3	0.3	2	1	1.3

SCORING	fg-fga	fg%	3fg-fga	3fg%	ft-fa	ft%	pts	pts/g
Grace Foster	19-40	.475	4-12	.333	35-39	.897	77	19.3
Kennedy Chappell	6-11	.545	0-3	.000	10-13	.769	22	5.5
Maci Maddox	25-54	.463	4-10	.400	8-8	1.000	62	15.5
Audrey Robertson	17-35	.486	4-8	.500	9-12	.750	47	11.8
Taylor Thomas	6-10	.600	2-3	.667	3-3	1.000	17	4.3
Shaylee Stovall	6-20	.300	3-12	.250	11-12	.917	26	6.5
Martie McCoy	6-16	.375	0-3	.000	3-4	.750	15	3.8
Audrey Spurgin	5-11	.455	0-0	.000	4-8	.500	14	3.5
Tia Johnson	0-0	.000	0-0	.000	0-0	.000	0	0.0
Reese Schumann	1-4	.250	0-0	.000	3-4	.750	5	1.3

TOTALS	o-reb	d-reb	t-reb	pf	fo	ast	to	a/to
Grace Foster	2	27	29	8	0	10	23	0.4
Kennedy Chappell	2	4	6	4	0	3	2	1.5
Maci Maddox	3	17	20	9	0	17	12	1.4
Audrey Robertson	3	16	19	9	0	7	10	0.7
Taylor Thomas	1	6	7	6	1	2	4	0.5
Shaylee Stovall	2	1	3	5	0	6	4	1.5
Martie McCoy	2	11	13	12	0	6	5	1.2
Audrey Spurgin	3	5	8	11	0	0	5	0.0
Tia Johnson	0	0	0	0	0	1	0	0.0
Reese Schumann	3	2	5	6	0	1	0	0.0

CAREER STATISTICS

SUMMARY	gp-gs	min/g	fg%	3fg%	ft%	r/g	a/g	stl	blk	pts/g
Grace Foster	71-37	24.2	.477	.354	.881	6.1	1.4	33	55	12.2
Kennedy Chappell	3-0	16.7	.500	.000	.769	1.7	1.0	0	0	6.7
Maci Maddox	82-37	22.0	.437	.376	.810	1.9	2.2	98	5	6.2
Audrey Robertson	91-38	21.1	.425	.280	.778	2.6	1.7	81	13	6.3
Taylor Thomas	28-1	9.4	.460	.214	.920	1.0	0.3	13	3	2.6
Shaylee Stovall	80-38	15.7	.406	.418	.816	0.9	0.7	30	0	4.2
Martie McCoy	37-20	17.2	.393	.300	.780	2.6	0.9	15	8	3.6
Audrey Spurgin	46-0	6.7	.360	.000	.643	1.4	0.1	5	5	2.3
Tia Johnson	12-0	4.8	.304	.200	1.000	1.0	0.3	5	0	1.6
Reese Schumann	49-1	12.6	.515	.000	.573	3.8	0.3	16	42	3.7

SCORING	fg-fga	fg%	3fg-fga	3fg%	ft-fa	ft%	pts	pts/g
Grace Foster	294-617	.477	73-206	.354	208-236	.881	869	12.2
Kennedy Chappell	5-10	.500	0-3	.000	10-13	.769	20	6.7
Maci Maddox	200-458	.437	44-117	.376	64-79	.810	508	6.2
Audrey Robertson	194-457	.425	37-132	.280	144-185	.778	569	6.3
Taylor Thomas	23-50	.460	3-14	.214	23-25	.920	72	2.6
Shaylee Stovall	97-239	.406	61-146	.418	84-103	.816	339	4.2
Martie McCoy	46-117	.393	9-30	.300	32-41	.780	133	3.6
Audrey Spurgin	31-86	.360	0-1	.000	45-70	.643	107	2.3
Tia Johnson	7-23	.304	2-10	.200	3-3	1.000	19	1.6
Reese Schumann	69-134	.515	0-0	.000	43-75	.573	181	3.7

	o-reb	d-reb	t-reb	pf	fo	ast	to	a/to
	75	357	432	130	2	97	144	0.7
	2	3	5	3	0	3	0	0.0
	19	136	155	56	0	183	119	1.5
	79	162	241	131	1	152	122	1.2
	2	25	27	32	1	9	26	0.3
	13	60	73	72	0	57	50	1.1
	19	79	98	87	3	32	29	1.1
	21	42	63	60	0	4	29	0.1
	2	10	12	10	0	4	3	1.3
	62	122	184	96	2	13	55	0.2

LCU - INDIVIDUAL GAME HIGHS

Points	28	Grace Foster vs Adams St. (11/05/23)
	24	Grace Foster vs CSU Pueblo (11/11/23)
	20	Maci Maddox vs CSU Pueblo (11/11/23)
	16	Audrey Robertson at Colo. Christian (11/10/23)
	16	Maci Maddox vs Union (TN) (11/03/23)
	16	Grace Foster vs Union (TN) (11/03/23)
Field Goals Made	8	Maci Maddox vs Union (TN) (11/03/23)
	7	Maci Maddox vs CSU Pueblo (11/11/23)
	7	Grace Foster vs Union (TN) (11/03/23)
Field Goal Att.	18	Maci Maddox vs CSU Pueblo (11/11/23)
	14	Maci Maddox at Colo. Christian (11/10/23)
	14	Grace Foster vs Adams St. (11/05/23)
FG Pct (min 5 made)	.750 (6-8)	Maci Maddox vs King (TN) (11/18/23)
	.750 (6-8)	Audrey Robertson vs Southwestern Okla. (11/17/23)
3-Point FG Made	3	Grace Foster vs Adams St. (11/05/23)
	2	Deja Johnson vs King (TN) (11/18/23)
	2	Shaylee Stovall vs Southwestern Okla. (11/17/23)
	2	Shaylee Stovall at Colo. Christian (11/10/23)
	2	Audrey Robertson at Colo. Christian (11/10/23)
	2	Maci Maddox vs Adams St. (11/05/23)
3-Point FG Att.	6	Grace Foster vs Adams St. (11/05/23)
	5	Maci Maddox vs CSU Pueblo (11/11/23)
3-Pt FG Pct (min 2 made)	1.000 (2-2)	Audrey Robertson at Colo. Christian (11/10/23)
	.667 (2-3)	Shaylee Stovall vs Southwestern Okla. (11/17/23)
	.667 (2-3)	Maci Maddox vs Adams St. (11/05/23)
Free Throws Made	13	Grace Foster vs CSU Pueblo (11/11/23)
	13	Grace Foster vs Adams St. (11/05/23)
Free Throw Att.	13	Grace Foster vs CSU Pueblo (11/11/23)
	13	Grace Foster vs Adams St. (11/05/23)
FT Pct (min 3 made)	1.000 (13-13)	Grace Foster vs CSU Pueblo (11/11/23)
	1.000 (13-13)	Grace Foster vs Adams St. (11/05/23)
	1.000 (8-8)	Shaylee Stovall vs Adams St. (11/05/23)
	1.000 (4-4)	Grace Foster vs Southwestern Okla. (11/17/23)
	1.000 (4-4)	Maci Maddox vs CSU Pueblo (11/11/23)
	1.000 (4-4)	Maci Maddox at Colo. Christian (11/10/23)
Rebounds	9	Grace Foster vs Southwestern Okla. (11/17/23)
	8	Grace Foster vs CSU Pueblo (11/11/23)
	8	Audrey Robertson vs CSU Pueblo (11/11/23)
	8	Grace Foster vs Adams St. (11/05/23)
Assists	6	Audrey Robertson vs Southwestern Okla. (11/17/23)
	5	Maci Maddox vs CSU Pueblo (11/11/23)
Steals	5	Maci Maddox vs CSU Pueblo (11/11/23)
	3	Shaylee Stovall vs CSU Pueblo (11/11/23)
	3	Maci Maddox at Colo. Christian (11/10/23)
	3	Maci Maddox vs Adams St. (11/05/23)
	3	Audrey Robertson vs Union (TN) (11/03/23)
Blocked Shots	1	Martie McCoy vs King (TN) (11/18/23)
	1	Reese Schumann vs King (TN) (11/18/23)
	1	Martie McCoy vs Southwestern Okla. (11/17/23)
	1	Grace Foster vs Southwestern Okla. (11/17/23)
	1	Grace Foster vs CSU Pueblo (11/11/23)
	1	Reese Schumann at Colo. Christian (11/10/23)
	1	Audrey Spurgin at Colo. Christian (11/10/23)
	1	Martie McCoy vs Adams St. (11/05/23)
	1	Martie McCoy vs Adams St. (11/05/23)
	1	Grace Foster vs Union (TN) (11/03/23)
	1	Martie McCoy vs Union (TN) (11/03/23)
Turnovers	8	Grace Foster vs Union (TN) (11/03/23)
	7	Grace Foster at Colo. Christian (11/10/23)
Fouls	5	Taylor Thomas vs Union (TN) (11/03/23)
	4	Reese Schumann vs CSU Pueblo (11/11/23)
	4	Audrey Spurgin vs CSU Pueblo (11/11/23)
	4	Grace Foster at Colo. Christian (11/10/23)
	4	Maci Maddox vs Union (TN) (11/03/23)
Minutes	45	Martie McCoy vs Union (TN) (11/03/23)
	40	Maci Maddox at Colo. Christian (11/10/23)
	40	Audrey Robertson at Colo. Christian (11/10/23)
	40	Maci Maddox vs Adams St. (11/05/23)

OPPONENT - INDIVIDUAL GAME HIGHS

Points	24	Leilani Love vs CSU Pueblo (11/11/23)
	19	Nicole Bowlin at Colo. Christian (11/10/23)
	19	Macey Lee vs Union (TN) (11/03/23)
	18	Shanique Lucas vs Union (TN) (11/03/23)
	17	Harmanie Dominguez vs Adams St. (11/05/23)
Field Goals Made	8	Leilani Love vs CSU Pueblo (11/11/23)
	8	Macey Lee vs Union (TN) (11/03/23)
Field Goal Att.	15	Averi Zinn vs Southwestern Okla. (11/17/23)
	15	Maggie Hutka at Colo. Christian (11/10/23)
FG Pct (min 5 made)	.800 (8-10)	Leilani Love vs CSU Pueblo (11/11/23)
	.800 (8-10)	Macey Lee vs Union (TN) (11/03/23)
3-Point FG Made	5	Lauren West vs Union (TN) (11/03/23)
	3	Nicole Bowlin at Colo. Christian (11/10/23)
	3	Harmanie Dominguez vs Adams St. (11/05/23)
	3	Leah Cauble vs Union (TN) (11/03/23)
	3	Macey Lee vs Union (TN) (11/03/23)
3-Point FG Att.	11	Maggie Phipps at Colo. Christian (11/10/23)
	9	Averi Zinn vs Southwestern Okla. (11/17/23)
	9	Lauren West vs Union (TN) (11/03/23)
3-Pt FG Pct (min 2 made)	.750 (3-4)	Harmanie Dominguez vs Adams St. (11/05/23)
	.750 (3-4)	Macey Lee vs Union (TN) (11/03/23)
Free Throws Made	9	Shanique Lucas vs Union (TN) (11/03/23)
	8	Leilani Love vs CSU Pueblo (11/11/23)
Free Throw Att.	10	Leilani Love vs CSU Pueblo (11/11/23)
	10	Shanique Lucas vs Union (TN) (11/03/23)
FT Pct (min 3 made)	1.000 (6-6)	Brianna Dunbar vs King (TN) (11/18/23)
	1.000 (4-4)	Elaina Watson vs Adams St. (11/05/23)
Rebounds	12	Hailey Grant vs Southwestern Okla. (11/17/23)
	9	Ashley Allen vs King (TN) (11/18/23)
Assists	8	Tomia Johnson vs CSU Pueblo (11/11/23)
	5	Kiiyani Anitliu vs Adams St. (11/05/23)
Steals	3	Lanie Gooch vs Southwestern Okla. (11/17/23)
	3	Brianna Dunbar vs King (TN) (11/18/23)
	2	Hailey Grant vs Southwestern Okla. (11/17/23)
	2	Averi Zinn vs Southwestern Okla. (11/17/23)
	2	Rees Berkey vs Southwestern Okla. (11/17/23)
	2	Chloe Cantrell vs Southwestern Okla. (11/17/23)
	2	Mason Jones vs Southwestern Okla. (11/17/23)
	2	Brynae Stewart vs CSU Pueblo (11/11/23)
	2	Leilani Love vs CSU Pueblo (11/11/23)
	2	Autumn Watts vs CSU Pueblo (11/11/23)
	2	Nicole Bowlin at Colo. Christian (11/10/23)
	2	Regan Loconte at Colo. Christian (11/10/23)
	2	Victoria Perez at Colo. Christian (11/10/23)
	2	Dasiya Jones at Colo. Christian (11/10/23)
	2	Kayla Harris vs Adams St. (11/05/23)
	2	Riahana Davis vs Adams St. (11/05/23)
	2	Jazalyn Anousinh vs Union (TN) (11/03/23)
Blocked Shots	3	Alisha Little vs CSU Pueblo (11/11/23)
	2	Christabel Longe vs Adams St. (11/05/23)
Turnovers	6	Autumn Watts vs CSU Pueblo (11/11/23)
	4	Alayna Smith vs King (TN) (11/18/23)
	4	Hailey Grant vs Southwestern Okla. (11/17/23)
	4	Tomia Johnson vs CSU Pueblo (11/11/23)
	4	Victoria Perez at Colo. Christian (11/10/23)
	4	Nicole Bowlin at Colo. Christian (11/10/23)
	4	Kiiyani Anitliu vs Adams St. (11/05/23)
	4	Brooke Hampel vs Union (TN) (11/03/23)
Fouls	5	Tomia Johnson vs CSU Pueblo (11/11/23)

DOUBLE-DOUBLES

Opponent	T/O	2ndCh	Paint	FastB	Bench	Ties	Leads	WL	Score	Leads overcome
Union (TN)	20	9	48	6	26	0	0	L	78-87	lost 4 1st-08:57
Adams St.	20	0	16	8	5	1	4	W	69-65	trailed by 6 1st-07:26
Colo. Christian	18	5	28	5	16	3	2	W	67-62	trailed by 8 1st-02:48
CSU Pueblo	18	8	30	9	14	0	0	W	71-60	
Southwestern Okla.	18	6	30	2	9	0	0	W	61-54	
King (TN)	27	9	36	10	44	0	2	W	82-42	trailed by 2 1st-08:45
Totals	85	24	130	26	84	1	6			
Average/Game	21.2	6.0	32.5	6.5	21.0	0.2	1.5			
Opponent	56	32	94	13	93	5	5			
Average/Game	14.0	8.0	23.5	3.2	23.2	1.2	1.2			

GAME BY GAME SPECIALTY STATS

CAREER STATISTICS

ALLEN, Taylor

				Field Goals		3-Point		F-Throws		Rebounds										Scoring	
SEASON	TEAM	GP-GS	MIN/AVG	FG-FGA	FG%	3FG-3FGA	3FG%	FT-FTA	FT%	OFF	DEF	TOT	AVG	PF-FO	A	TO	BLK	STL		PTS	AVG
2023-24	LCU	1-0	13/12.9	4-7	.571	1-1	1.000	0-0	.000	2	1	3	3.0	0-0	2	0	0	1		9	9.0
TOTAL		1-0	13/12.9	4-7	.571	1-1	1.000	0-0	.000	2	1	3	3.0	0-0	2	0	0	1		9	9.0

Single Game Highs

Statistic	Value	
Points	9	vs King (TN) 11/18/23
Rebounds	3	vs King (TN) 11/18/23
Assists	2	vs King (TN) 11/18/23
Steals	1	vs King (TN) 11/18/23
FG Made	4	vs King (TN) 11/18/23
FG Attempts	7	vs King (TN) 11/18/23
3FG Made	1	vs King (TN) 11/18/23
3FG Attempts	1	vs King (TN) 11/18/23

CHAPPELL, Kennedy

				Field Goals		3-Point		F-Throws		Rebounds										Scoring	
SEASON	TEAM	GP-GS	MIN/AVG	FG-FGA	FG%	3FG-3FGA	3FG%	FT-FTA	FT%	OFF	DEF	TOT	AVG	PF-FO	A	TO	BLK	STL		PTS	AVG
2023-24	LCU	6-0	89/14.8	9-18	.500	0-5	.000	11-15	.733	3	7	10	1.7	7-0	4	3	0	4		29	4.8
TOTAL		6-0	89/14.8	9-18	.500	0-5	.000	11-15	.733	3	7	10	1.7	7-0	4	3	0	4		29	4.8

Single Game Highs

Statistic	Value	
Points	10	at Colo. Christian 11/10/23
Rebounds	3	at Colo. Christian 11/10/23, vs King (TN) 11/18/23
Assists	1	4 times
Steals	2	vs King (TN) 11/18/23
FG Made	3	at Colo. Christian 11/10/23
FG Attempts	6	vs King (TN) 11/18/23
3FG Attempts	2	vs Union (TN) 11/03/23, vs King (TN) 11/18/23
FT Made	6	vs Union (TN) 11/03/23
FT Attempts	7	vs Union (TN) 11/03/23

FOSTER, Grace

				Field Goals		3-Point		F-Throws		Rebounds										Scoring	
SEASON	TEAM	GP-GS	MIN/AVG	FG-FGA	FG%	3FG-3FGA	3FG%	FT-FTA	FT%	OFF	DEF	TOT	AVG	PF-FO	A	TO	BLK	STL		PTS	AVG
2021-22	LCU	35-0	549/15.7	95-189	.503	23-70	.329	46-57	.807	29	85	114	3.3	57-1	25	41	28	11		259	7.4
2022-23	LCU	35-35	1143/32.7	189-411	.460	47-128	.367	150-164	.915	48	263	311	8.9	71-1	66	87	26	22		575	16.4
2023-24	LCU	6-6	188/31.4	26-57	.456	5-15	.333	39-43	.907	2	41	43	7.2	9-0	16	30	4	1		96	16.0
TOTAL		76-41	1879/24.7	310-657	.472	75-213	.352	235-264	.890	79	389	468	6.2	137-2	107	158	58	34		930	12.2

Single Game Highs

Statistic	Value	
Points	36	vs Missouri Western 11/06/22
Rebounds	17	vs Angelo St. 02/02/23
Assists	7	vs St. Mary's (TX) 02/18/23
Steals	2	7 times
Blocks	6	at Tex. A&M-Commerce 01/13/22
FG Made	13	vs Missouri Western 11/06/22
FG Attempts	20	vs Mo. Southern St. 11/05/22, vs Missouri Western 11/06/22
3FG Made	4	vs Missouri Western 11/06/22
3FG Attempts	8	vs Western N.M. 01/14/23
FT Made	13	vs Adams St. 11/05/23, vs CSU Pueblo 11/11/23
FT Attempts	13	vs Adams St. 11/05/23, vs CSU Pueblo 11/11/23

LUBBOCK CHRISTIAN UNIVERSITY WOMEN'S BASKETBALL GAME NOTES
JOHNSON, Deja

				Field Goals		3-Point		F-Throws		Rebounds									Scoring	
SEASON	TEAM	GP-GS	MIN/AVG	FG-FGA	FG%	3FG-3FGA	3FG%	FT-FTA	FT%	OFF	DEF	TOT	AVG	PF-FO	A	TO	BLK	STL	PTS	AVG
2022-23	LCU	11-0	62/5.6	4-10	.400	1-5	.200	7-8	.875	4	8	12	1.1	3-0	6	2	0	3	16	1.5
2023-24	LCU	1-0	14/14.2	3-5	.600	2-4	.500	0-0	.000	0	2	2	2.0	3-0	0	1	0	1	8	8.0
TOTAL		12-0	76/6.4	7-15	.467	3-9	.333	7-8	.875	4	10	14	1.2	6-0	6	3	0	4	24	2.0

Single Game Highs

Statistic	Value	
Points	8	vs King (TN) 11/18/23
Rebounds	3	vs Cameron 12/30/22
Assists	2	vs Cameron 12/30/22
Steals	1	4 times
FG Made	3	vs King (TN) 11/18/23
FG Attempts	5	vs King (TN) 11/18/23
3FG Made	2	vs King (TN) 11/18/23
3FG Attempts	4	vs King (TN) 11/18/23
FT Made	4	vs Colo. Christian 11/11/22
FT Attempts	4	vs Colo. Christian 11/11/22

JOHNSON, Tia

				Field Goals		3-Point		F-Throws		Rebounds									Scoring	
SEASON	TEAM	GP-GS	MIN/AVG	FG-FGA	FG%	3FG-3FGA	3FG%	FT-FTA	FT%	OFF	DEF	TOT	AVG	PF-FO	A	TO	BLK	STL	PTS	AVG
2022-23	LCU	11-0	54/4.9	7-23	.304	2-10	.200	3-3	1.000	2	10	12	1.1	10-0	3	3	0	5	19	1.7
2023-24	LCU	4-0	22/5.6	1-2	.500	0-1	.000	0-0	.000	0	5	5	1.3	3-0	4	5	0	0	2	0.5
TOTAL		15-0	76/5.1	8-25	.320	2-11	.182	3-3	1.000	2	15	17	1.1	13-0	7	8	0	5	21	1.4

Single Game Highs

Statistic	Value	
Points	5	vs Tex. Permian Basin 02/04/23
Rebounds	5	vs King (TN) 11/18/23
Assists	3	vs King (TN) 11/18/23
Steals	2	vs St. Edward's 02/16/23
FG Made	2	at Midwestern St. 01/26/23, vs Tex. Permian Basin 02/04/23
FG Attempts	5	at Midwestern St. 01/26/23, vs Tex. Permian Basin 02/04/23
3FG Made	1	vs Tex. Permian Basin 02/04/23, vs Ark.-Fort Smith 12/03/22
3FG Attempts	2	vs Tex. Permian Basin 02/04/23, vs Ark.-Fort Smith 12/03/22
FT Made	2	vs St. Edward's 02/16/23
FT Attempts	2	vs St. Edward's 02/16/23

MADDOX, Maci

				Field Goals		3-Point		F-Throws		Rebounds									Scoring	
SEASON	TEAM	GP-GS	MIN/AVG	FG-FGA	FG%	3FG-3FGA	3FG%	FT-FTA	FT%	OFF	DEF	TOT	AVG	PF-FO	A	TO	BLK	STL	PTS	AVG
2020-21	LCU	15-0	98/6.6	13-25	.520	3-8	.375	3-3	1.000	3	6	9	0.6	5-0	8	7	0	13	32	2.1
2021-22	LCU	31-0	356/11.5	26-63	.413	10-21	.476	7-7	1.000	2	12	14	0.5	10-0	21	17	1	16	69	2.2
2022-23	LCU	35-35	1284/36.7	148-349	.424	31-88	.352	53-68	.779	14	109	123	3.5	36-0	146	93	4	65	380	10.9
2023-24	LCU	6-6	221/36.8	37-75	.493	6-14	.429	11-12	.917	4	22	26	4.3	10-0	20	14	0	15	91	15.2
TOTAL		87-41	1958/22.5	224-512	.438	50-131	.382	74-90	.822	23	149	172	2.0	61-0	195	131	5	109	572	6.6

Single Game Highs

Statistic	Value	
Points	20	vs CSU Pueblo 11/11/23
Rebounds	8	vs Mont. St. Billings 12/17/22
Assists	9	at Tex. A&M-Kingsville 12/10/22
Steals	5	at Texas Woman's 01/21/23, vs CSU Pueblo 11/11/23
Blocks	1	5 times
FG Made	8	vs Okla. Christian 12/01/22, at West Tex. A&M 02/23/23, vs Union (TN) 11/03/23
FG Attempts	19	at Tex. A&M Int'l 12/08/22
3FG Made	4	at UT Tyler 01/19/23
3FG Attempts	7	at UT Tyler 01/19/23
FT Made	8	vs Texas Woman's 03/10/23
FT Attempts	9	vs Texas Woman's 03/10/23

LUBBOCK CHRISTIAN UNIVERSITY WOMEN'S BASKETBALL GAME NOTES
ROBERTSON, Audrey

SEASON	TEAM	GP-GS	MIN/AVG	Field Goals		3-Point		F-Throws		Rebounds									Scoring	
				FG-FGA	FG%	3FG-3FGA	3FG%	FT-FTA	FT%	OFF	DEF	TOT	AVG	PF-FO	A	TO	BLK	STL	PTS	AVG
2020-21	LCU	20-0	177/8.9	12-33	.364	3-14	.214	7-9	.778	17	7	24	1.2	14-0	11	12	0	9	34	1.7
2021-22	LCU	35-3	577/16.5	52-126	.413	9-37	.243	39-53	.736	20	25	45	1.3	49-0	35	27	6	25	152	4.3
2022-23	LCU	35-35	1115/31.9	120-281	.427	24-82	.293	100-125	.800	40	125	165	4.7	67-2	103	77	7	44	364	10.4
2023-24	LCU	6-5	179/29.8	26-47	.553	6-12	.500	11-14	.786	3	19	22	3.7	11-0	16	13	0	8	69	11.5
TOTAL		96-43	2048/21.3	210-487	.431	42-145	.290	157-201	.781	80	176	256	2.7	141-2	165	129	13	86	619	6.4

Single Game Highs

Statistic	Value	
Points	19	vs Mont. St. Billings 12/17/22
Rebounds	12	at Angelo St. 01/07/23
Assists	6	at UT Tyler 01/02/21, vs Colo. Christian 11/11/22, vs Southwestern Okla. 11/17/23
Steals	4	vs Okla. Christian 12/01/22, vs Colo. Christian 11/11/22
Blocks	2	at Southwestern Okla. 11/21/22, at Eastern N.M. 02/11/23
FG Made	7	vs Mont. St. Billings 12/17/22
FG Attempts	12	at Tex. Permian Basin 01/05/23, vs Angelo St. 02/02/23
3FG Made	3	vs Eastern N.M. 01/12/23, vs Tex. Permian Basin 02/04/23
3FG Attempts	6	vs UT Tyler 03/13/23
FT Made	8	vs Ark.-Fort Smith 03/01/22
FT Attempts	10	vs Ark.-Fort Smith 03/01/22

SCHUMANN, Reese

SEASON	TEAM	GP-GS	MIN/AVG	Field Goals		3-Point		F-Throws		Rebounds									Scoring	
				FG-FGA	FG%	3FG-3FGA	3FG%	FT-FTA	FT%	OFF	DEF	TOT	AVG	PF-FO	A	TO	BLK	STL	PTS	AVG
2021-22	LCU	12-0	64/5.4	5-12	.417	0-0	.000	3-6	.500	9	13	22	1.8	9-0	0	3	2	0	13	1.1
2022-23	LCU	35-1	556/15.9	65-124	.524	0-0	.000	39-69	.565	52	114	166	4.7	87-2	14	54	39	16	169	4.8
2023-24	LCU	6-0	65/10.8	3-9	.333	0-0	.000	4-6	.667	6	5	11	1.8	9-0	3	4	2	4	10	1.7
TOTAL		53-1	685/12.9	73-145	.503	0-0	.000	46-81	.568	67	132	199	3.8	105-2	17	61	43	20	192	3.6

Single Game Highs

Statistic	Value	
Points	14	at Cameron 01/28/23
Rebounds	10	at Tex. A&M Int'l 12/08/22
Assists	2	at Tex. A&M-Kingsville 12/10/22, at Western N.M. 02/09/23
Steals	2	4 times
Blocks	6	vs Western N.M. 01/14/23
FG Made	7	at Cameron 01/28/23
FG Attempts	8	vs Western N.M. 01/14/23, at Cameron 01/28/23
FT Made	3	vs Midwestern St. 01/01/23, vs Eastern N.M. 01/12/23
FT Attempts	6	vs Midwestern St. 01/01/23

SPURGIN, Audrey

SEASON	TEAM	GP-GS	MIN/AVG	Field Goals		3-Point		F-Throws		Rebounds									Scoring	
				FG-FGA	FG%	3FG-3FGA	3FG%	FT-FTA	FT%	OFF	DEF	TOT	AVG	PF-FO	A	TO	BLK	STL	PTS	AVG
2021-22	LCU	14-0	67/4.8	4-17	.235	0-0	.000	10-15	.667	1	13	14	1.0	14-0	0	9	1	2	18	1.3
2022-23	LCU	29-0	207/7.1	24-61	.393	0-1	.000	31-47	.660	17	26	43	1.5	39-0	4	15	3	2	79	2.7
2023-24	LCU	6-0	72/12.0	8-17	.471	0-0	.000	8-14	.571	6	11	17	2.8	12-0	1	5	1	1	24	4.0
TOTAL		49-0	345/7.0	36-95	.379	0-1	.000	49-76	.645	24	50	74	1.5	65-0	5	29	5	5	121	2.5

Single Game Highs

Statistic	Value	
Points	12	vs Texas Woman's 03/04/23
Rebounds	6	vs Southwestern Okla. 11/17/23
Assists	1	5 times
Steals	2	vs Minn.-Crookston 11/25/21
Blocks	1	5 times
FG Made	3	vs Cameron 12/30/22, vs Western N.M. 01/14/23, vs Texas Woman's 03/04/23
FG Attempts	5	5 times
3FG Attempts	1	vs Western Colo. 11/27/22
FT Made	6	vs Texas Woman's 03/04/23
FT Attempts	6	4 times

LUBBOCK CHRISTIAN UNIVERSITY WOMEN'S BASKETBALL GAME NOTES
STOVALL, Shaylee

SEASON	TEAM	GP-GS	MIN/AVG	Field Goals		3-Point		F-Throws		Rebounds									Scoring	
				FG-FGA	FG%	3FG-3FGA	3FG%	FT-FTA	FT%	OFF	DEF	TOT	AVG	PF-FO	A	TO	BLK	STL	PTS	AVG
2020-21	LCU	16-0	86/5.4	4-15	.267	3-10	.300	4-4	1.000	1	4	5	0.3	5-0	11	4	0	1	15	0.9
2021-22	LCU	27-1	193/7.2	12-28	.429	9-16	.563	8-10	.800	2	14	16	0.6	15-0	6	7	0	8	41	1.5
2022-23	LCU	35-35	938/26.8	75-186	.403	46-115	.400	61-77	.792	9	41	50	1.4	52-0	34	36	0	20	257	7.3
2023-24	LCU	6-6	148/24.6	10-26	.385	6-16	.375	13-14	.929	2	3	5	0.8	8-0	10	5	0	8	39	6.5
TOTAL		84-42	1365/16.3	101-255	.396	64-157	.408	86-105	.819	14	62	76	0.9	80-0	61	52	0	37	352	4.2

Single Game Highs

Statistic	Value	
Points	18	at Texas Woman's 01/21/23
Rebounds	4	4 times
Assists	4	at Midwestern St. 01/26/23, vs King (TN) 11/18/23
Steals	4	at Tex. Permian Basin 01/05/23
FG Made	6	vs Okla. Christian 12/01/22, at Texas Woman's 01/21/23
FG Attempts	10	at Tex. A&M Int'l 12/08/22, at UT Tyler 01/19/23
3FG Made	4	at Angelo St. 01/07/23, at Texas Woman's 01/21/23
3FG Attempts	8	at UT Tyler 01/19/23
FT Made	9	vs Mo. Southern St. 11/05/22
FT Attempts	10	vs Mo. Southern St. 11/05/22

THOMAS, Taylor

SEASON	TEAM	GP-GS	MIN/AVG	Field Goals		3-Point		F-Throws		Rebounds									Scoring	
				FG-FGA	FG%	3FG-3FGA	3FG%	FT-FTA	FT%	OFF	DEF	TOT	AVG	PF-FO	A	TO	BLK	STL	PTS	AVG
2022-23	LCU	25-0	215/8.6	19-42	.452	1-11	.091	21-23	.913	1	20	21	0.8	26-0	8	22	3	10	60	2.4
2023-24	LCU	6-1	82/13.7	7-14	.500	2-4	.500	8-9	.889	2	6	8	1.3	8-1	5	6	0	5	24	4.0
TOTAL		31-1	297/9.6	26-56	.464	3-15	.200	29-32	.906	3	26	29	0.9	34-1	13	28	3	15	84	2.7

Single Game Highs

Statistic	Value	
Points	9	vs Tex. Permian Basin 02/04/23, vs Union (TN) 11/03/23
Rebounds	3	vs Midwestern St. 01/01/23, vs Union (TN) 11/03/23, vs Adams St. 11/05/23
Assists	2	vs Tex. Permian Basin 02/04/23, vs King (TN) 11/18/23
Steals	3	vs Midwestern St. 01/01/23
Blocks	1	vs Mo. Southern St. 11/05/22, vs Cameron 12/30/22, at Angelo St. 01/07/23
FG Made	3	vs Okla. Christian 12/01/22, vs Tex. Permian Basin 02/04/23, vs Union (TN) 11/03/23
FG Attempts	6	vs Tex. Permian Basin 02/04/23
3FG Made	1	vs Tex. Permian Basin 02/04/23, vs Union (TN) 11/03/23, vs Adams St. 11/05/23
3FG Attempts	3	vs Tex. Permian Basin 02/04/23
FT Made	4	at Tex. Permian Basin 01/05/23, vs Colo. Christian 11/11/22
FT Attempts	5	at Tex. Permian Basin 01/05/23



2023-24 Lubbock Christian Women's Basketball
Individual Game-by-Game
All games

Page 1/13
as of Nov 24, 2023

#0 FOSTER, Grace

Opponent	Date	GS	MIN	Total		3-Pointers		Free throws		Rebounds											
				FG-FGA	PCT	3FG-3FGA	PCT	FT-FTA	PCT	OFF	DEF	TOT	AVG	PF	A	TO	BLK	STL	PTS	AVG	
Union (TN)	11/03/2023	*	31:10	7-12	.583	0-2	.000	2-5	.400	1	6	7	7.0	3	4	8	1	0	16	16.0	
Adams St.	11/05/2023	*	39:04	6-14	.429	3-6	.500	13-13	1.000	0	8	8	7.5	1	3	3	1	0	28	22.0	
at Colo. Christian	11/10/2023	*	27:58	1-5	.200	0-2	.000	7-8	.875	0	6	6	7.0	4	0	7	0	0	9	17.7	
vs CSU Pueblo	11/11/2023	*	36:57	5-9	.556	1-2	.500	13-13	1.000	1	7	8	7.3	0	3	5	1	0	24	19.3	
Southwestern Okla.	11/17/2023	*	36:03	3-7	.429	0-1	.000	4-4	1.000	0	9	9	7.6	1	4	6	1	0	10	17.4	
King (TN)	11/18/2023	*	16:54	4-10	.400	1-2	.500	0-0	.000	0	5	5	7.2	0	2	1	0	1	9	16.0	
Totals		6	188:06	26-57	.456	5-15	.333	39-43	.907	2	41	43	7.2	9	16	30	4	1	96	16.0	

Player Averages

Games Played	Minutes/game	Points/game	FG Pct	3FG Pct	FT Pct	Rebounds/game	Assists/game	Turnovers/game	Assist/Turnover ratio	Steals/game	Blocks/game
6	31.4	16.0	45.6	33.3	90.7	7.2	2.7	5.0	0.5	0.2	0.7



2023-24 Lubbock Christian Women's Basketball
Individual Game-by-Game
All games

Page 2/13
as of Nov 24, 2023

#1 CHAPPELL, Kennedy

Opponent	Date	GS	MIN	Total		3-Pointers		Free throws		Rebounds										
				FG-FGA	PCT	3FG-3FGA	PCT	FT-FTA	PCT	OFF	DEF	TOT	AVG	PF	A	TO	BLK	STL	PTS	AVG
Union (TN)	11/03/2023		19:59	1-4	.250	0-2	.000	6-7	.857	1	1	2	2.0	2	1	0	0	0	8	8.0
Adams St.	11/05/2023		08:26	1-2	.500	0-0	.000	0-0	.000	0	0	0	1.0	1	1	0	0	0	2	5.0
at Colo. Christian	11/10/2023		19:49	3-4	.750	0-1	.000	4-6	.667	1	2	3	1.7	0	1	0	0	0	10	6.7
vs CSU Pueblo	11/11/2023		11:24	1-1	1.000	0-0	.000	0-0	.000	0	1	1	1.5	1	0	2	0	1	2	5.5
Southwestern Okla.	11/17/2023		11:38	1-1	1.000	0-0	.000	1-2	.500	0	1	1	1.4	0	0	1	0	1	3	5.0
King (TN)	11/18/2023		17:37	2-6	.333	0-2	.000	0-0	.000	1	2	3	1.7	3	1	0	0	2	4	4.8
Totals		0	88:53	9-18	.500	0-5	.000	11-15	.733	3	7	10	1.7	7	4	3	0	4	29	4.8

Player Averages

Games Played	Minutes/game	Points/game	FG Pct	3FG Pct	FT Pct	Rebounds/game	Assists/game	Turnovers/game	Assist/Turnover ratio	Steals/game	Blocks/game
6	14.8	4.8	50.0	0.0	73.3	1.7	0.7	0.5	1.3	0.7	0.0



2023-24 Lubbock Christian Women's Basketball
Individual Game-by-Game
All games

Page 3/13
as of Nov 24, 2023

#2 MADDUX, Maci

Opponent	Date	GS	MIN	Total		3-Pointers		Free throws		Rebounds				PF	A	TO	BLK	STL	PTS	AVG
				FG-FGA	PCT	3FG-3FGA	PCT	FT-FTA	PCT	OFF	DEF	TOT	AVG							
Union (TN)	11/03/2023	*	38:40	8-11	.727	0-0	.000	0-0	.000	0	4	4	4.0	4	4	4	0	1	16	16.0
Adams St.	11/05/2023	*	40:00	6-11	.545	2-3	.667	0-0	.000	0	4	4	4.0	1	4	2	0	3	14	15.0
at Colo. Christian	11/10/2023	*	44:35	4-14	.286	0-2	.000	4-4	1.000	1	5	6	4.7	3	4	1	0	3	12	14.0
vs CSU Pueblo	11/11/2023	*	38:46	7-18	.389	2-5	.400	4-4	1.000	2	4	6	5.0	1	5	5	0	5	20	15.5
Southwestern Okla.	11/17/2023	*	37:37	6-13	.462	1-3	.333	2-2	1.000	1	2	3	4.6	0	2	2	0	2	15	15.4
King (TN)	11/18/2023	*	20:56	6-8	.750	1-1	1.000	1-2	.500	0	3	3	4.3	1	1	0	0	1	14	15.2
Totals		6	220:34	37-75	.493	6-14	.429	11-12	.917	4	22	26	4.3	10	20	14	0	15	91	15.2

Player Averages

Games Played	Minutes/ game	Points/ game	FG Pct	3FG Pct	FT Pct	Rebounds/ game	Assists/ game	Turnovers/ game	Assist/Turnover ratio	Steals/ game	Blocks/ game
6	36.8	15.2	49.3	42.9	91.7	4.3	3.3	2.3	1.4	2.5	0.0



2023-24 Lubbock Christian Women's Basketball
Individual Game-by-Game
All games

Page 4/13
as of Nov 24, 2023

#3 ROBERTSON, Audrey

Opponent	Date	GS	MIN	Total		3-Pointers		Free throws		Rebounds				PF	A	TO	BLK	STL	PTS	AVG
				FG-FGA	PCT	3FG-3FGA	PCT	FT-FTA	PCT	OFF	DEF	TOT	AVG							
Union (TN)	11/03/2023		29:41	4-10	.400	1-2	.500	3-4	.750	0	3	3	3.0	3	2	1	0	3	12	12.0
Adams St.	11/05/2023	*	31:18	3-9	.333	0-1	.000	0-0	.000	1	1	2	2.5	2	1	3	0	1	6	9.0
at Colo. Christian	11/10/2023	*	39:28	6-9	.667	2-2	1.000	2-2	1.000	1	5	6	3.7	2	3	2	0	1	16	11.3
vs CSU Pueblo	11/11/2023	*	32:34	4-7	.571	1-3	.333	4-6	.667	1	7	8	4.8	2	1	4	0	2	13	11.8
Southwestern Okla.	11/17/2023	*	31:33	6-8	.750	1-2	.500	1-1	1.000	0	2	2	4.2	1	6	2	0	1	14	12.2
King (TN)	11/18/2023	*	14:27	3-4	.750	1-2	.500	1-1	1.000	0	1	1	3.7	1	3	1	0	0	8	11.5
Totals		5	179:01	26-47	.553	6-12	.500	11-14	.786	3	19	22	3.7	11	16	13	0	8	69	11.5

Player Averages

Games Played	Minutes/ game	Points/ game	FG Pct	3FG Pct	FT Pct	Rebounds/ game	Assists/ game	Turnovers/ game	Assist/Turnover ratio	Steals/ game	Blocks/ game
6	29.8	11.5	55.3	50.0	78.6	3.7	2.7	2.2	1.2	1.3	0.0



2023-24 Lubbock Christian Women's Basketball
Individual Game-by-Game
All games

Page 5/13
as of Nov 24, 2023

#4 MATHEWS, Kimber

Opponent	Date			Total		3-Pointers		Free throws		Rebounds											
		GS	MIN	FG-FGA	PCT	3FG-3FGA	PCT	FT-FTA	PCT	OFF	DEF	TOT	AVG	PF	A	TO	BLK	STL	PTS	AVG	
King (TN)	11/18/2023		10:58	1-2	.500	1-1	1.000	2-2	1.000	1	0	1	1.0	3	0	0	0	0	5	5.0	
Totals		0	10:58	1-2	.500	1-1	1.000	2-2	1.000	1	0	1	1.0	3	0	0	0	0	5	5.0	

Player Averages

Games Played	Minutes/ game	Points/ game	FG Pct	3FG Pct	FT Pct	Rebounds/ game	Assists/ game	Turnovers/ game	Assist/Turnover ratio	Steals/ game	Blocks/ game
1	11.0	5.0	50.0	100.0	100.0	1.0	0.0	0.0	0.0	0.0	0.0



2023-24 Lubbock Christian Women's Basketball
Individual Game-by-Game
All games

Page 6/13
as of Nov 24, 2023

#11 ALLEN, Taylor

Opponent	Date			Total		3-Pointers		Free throws		Rebounds											
		GS	MIN	FG-FGA	PCT	3FG-3FGA	PCT	FT-FTA	PCT	OFF	DEF	TOT	AVG	PF	A	TO	BLK	STL	PTS	AVG	
King (TN)	11/18/2023		12:53	4-7	.571	1-1	1.000	0-0	.000	2	1	3	3.0	0	2	0	0	1	9	9.0	
Totals		0	12:53	4-7	.571	1-1	1.000	0-0	.000	2	1	3	3.0	0	2	0	0	1	9	9.0	

Player Averages

Games Played	Minutes/ game	Points/ game	FG Pct	3FG Pct	FT Pct	Rebounds/ game	Assists/ game	Turnovers/ game	Assist/Turnover ratio	Steals/ game	Blocks/ game
1	12.9	9.0	57.1	100.0	0.0	3.0	2.0	0.0	2.0	1.0	0.0



2023-24 Lubbock Christian Women's Basketball
Individual Game-by-Game
All games

Page 7/13
as of Nov 24, 2023

#12 THOMAS, Taylor

Opponent	Date	GS	MIN	Total		3-Pointers		Free throws		Rebounds										
				FG-FGA	PCT	3FG-3FGA	PCT	FT-FTA	PCT	OFF	DEF	TOT	AVG	PF	A	TO	BLK	STL	PTS	AVG
Union (TN)	11/03/2023	*	20:12	3-5	.600	1-1	1.000	2-2	1.000	1	2	3	3.0	5	1	1	0	0	9	9.0
Adams St.	11/05/2023		13:35	1-2	.500	1-1	1.000	0-0	.000	0	3	3	3.0	1	0	1	0	2	3	6.0
at Colo. Christian	11/10/2023		10:16	0-1	.000	0-1	.000	0-0	.000	0	0	0	2.0	0	0	2	0	1	0	4.0
vs CSU Pueblo	11/11/2023		08:18	2-2	1.000	0-0	.000	1-1	1.000	0	1	1	1.8	0	1	0	0	0	5	4.3
Southwestern Okla.	11/17/2023		11:13	0-2	.000	0-1	.000	2-2	1.000	1	0	1	1.6	0	1	1	0	1	2	3.8
King (TN)	11/18/2023		18:31	1-2	.500	0-0	.000	3-4	.750	0	0	0	1.3	2	2	1	0	1	5	4.0
Totals		1	82:05	7-14	.500	2-4	.500	8-9	.889	2	6	8	1.3	8	5	6	0	5	24	4.0

Player Averages

Games Played	Minutes/ game	Points/ game	FG Pct	3FG Pct	FT Pct	Rebounds/ game	Assists/ game	Turnovers/ game	Assist/Turnover ratio	Steals/ game	Blocks/ game
6	13.7	4.0	50.0	50.0	88.9	1.3	0.8	1.0	0.8	0.8	0.0



2023-24 Lubbock Christian Women's Basketball
Individual Game-by-Game
All games

Page 8/13
as of Nov 24, 2023

#15 STOVALL, Shaylee

Opponent	Date	GS	MIN	Total		3-Pointers		Free throws		Rebounds											
				FG-FGA	PCT	3FG-3FGA	PCT	FT-FTA	PCT	OFF	DEF	TOT	AVG	PF	A	TO	BLK	STL	PTS	AVG	
Union (TN)	11/03/2023	*	24:34	2-5	.400	0-1	.000	3-4	.750	2	0	2	2.0	1	3	1	0	1	7	7.0	
Adams St.	11/05/2023	*	26:57	1-4	.250	1-3	.333	8-8	1.000	0	0	0	1.0	1	2	1	0	1	11	9.0	
at Colo. Christian	11/10/2023	*	21:10	3-6	.500	2-4	.500	0-0	.000	0	1	1	1.0	1	1	1	0	1	8	8.7	
vs CSU Pueblo	11/11/2023	*	28:58	0-5	.000	0-4	.000	0-0	.000	0	0	0	0.8	2	0	1	0	3	0	6.5	
Southwestern Okla.	11/17/2023	*	28:41	3-5	.600	2-3	.667	2-2	1.000	0	1	1	0.8	2	0	1	0	1	10	7.2	
King (TN)	11/18/2023	*	17:19	1-1	1.000	1-1	1.000	0-0	.000	0	1	1	0.8	1	4	0	0	1	3	6.5	
Totals		6	147:39	10-26	.385	6-16	.375	13-14	.929	2	3	5	0.8	8	10	5	0	8	39	6.5	

Player Averages

Games Played	Minutes/game	Points/game	FG Pct	3FG Pct	FT Pct	Rebounds/game	Assists/game	Turnovers/game	Assist/Turnover ratio	Steals/game	Blocks/game
6	24.6	6.5	38.5	37.5	92.9	0.8	1.7	0.8	2.0	1.3	0.0



2023-24 Lubbock Christian Women's Basketball
Individual Game-by-Game
All games

Page 9/13
as of Nov 24, 2023

#23 MCCOY, Martie

Opponent	Date	GS	MIN	Total		3-Pointers		Free throws		Rebounds				PF	A	TO	BLK	STL	PTS	AVG
				FG-FGA	PCT	3FG-3FGA	PCT	FT-FTA	PCT	OFF	DEF	TOT	AVG							
Union (TN)	11/03/2023	*	25:06	2-4	.500	0-2	.000	0-0	.000	0	3	3	3.0	4	4	1	1	0	4	4.0
Adams St.	11/05/2023	*	31:22	2-6	.333	0-1	.000	1-2	.500	1	4	5	4.0	3	1	0	1	2	5	4.5
at Colo. Christian	11/10/2023	*	25:53	2-4	.500	0-0	.000	2-2	1.000	1	4	5	4.3	3	1	3	0	0	6	5.0
vs CSU Pueblo	11/11/2023	*	08:27	0-2	.000	0-0	.000	0-0	.000	0	0	0	3.3	2	0	1	0	1	0	3.8
Southwestern Okla.	11/17/2023	*	14:47	1-2	.500	0-0	.000	1-1	1.000	0	3	3	3.2	2	0	4	1	0	3	3.6
King (TN)	11/18/2023	*	15:51	1-2	.500	0-0	.000	2-2	1.000	0	3	3	3.2	3	4	1	1	0	4	3.7
Totals		6	121:25	8-20	.400	0-3	.000	6-7	.857	2	17	19	3.2	17	10	10	4	3	22	3.7

Player Averages

Games Played	Minutes/ game	Points/ game	FG Pct	3FG Pct	FT Pct	Rebounds/ game	Assists/ game	Turnovers/ game	Assist/Turnover ratio	Steals/ game	Blocks/ game
6	20.2	3.7	40.0	0.0	85.7	3.2	1.7	1.7	1.0	0.5	0.7



2023-24 Lubbock Christian Women's Basketball
Individual Game-by-Game
All games

Page 10/13
as of Nov 24, 2023

#30 SPURGIN, Audrey

Opponent	Date	GS	MIN	Total		3-Pointers		Free throws		Rebounds				PF	A	TO	BLK	STL	PTS	AVG
				FG-FGA	PCT	3FG-3FGA	PCT	FT-FTA	PCT	OFF	DEF	TOT	AVG							
Union (TN)	11/03/2023		05:38	1-3	.333	0-0	.000	2-4	.500	3	1	4	4.0	1	0	1	0	0	4	4.0
Adams St.	11/05/2023		05:31	0-0	.000	0-0	.000	0-0	.000	0	0	0	2.0	3	0	2	0	0	0	2.0
at Colo. Christian	11/10/2023		22:03	2-5	.400	0-0	.000	2-4	.500	0	2	2	2.0	3	0	2	1	1	6	3.3
vs CSU Pueblo	11/11/2023		10:08	2-3	.667	0-0	.000	0-0	.000	0	2	2	2.0	4	0	0	0	0	4	3.5
Southwestern Okla.	11/17/2023		15:24	1-4	.250	0-0	.000	0-0	.000	3	3	6	2.8	0	1	0	0	0	2	3.2
King (TN)	11/18/2023		13:18	2-2	1.000	0-0	.000	4-6	.667	0	3	3	2.8	1	0	0	0	0	8	4.0
Totals		0	72:02	8-17	.471	0-0	.000	8-14	.571	6	11	17	2.8	12	1	5	1	1	24	4.0

Player Averages

Games Played	Minutes/game	Points/game	FG Pct	3FG Pct	FT Pct	Rebounds/game	Assists/game	Turnovers/game	Assist/Turnover ratio	Steals/game	Blocks/game
6	12.0	4.0	47.1	0.0	57.1	2.8	0.2	0.8	0.2	0.2	0.2



2023-24 Lubbock Christian Women's Basketball
Individual Game-by-Game
All games

Page 11/13
as of Nov 24, 2023

#31 JOHNSON, Tia

Opponent	Date	GS	MIN	Total		3-Pointers		Free throws		Rebounds										
				FG-FGA	PCT	3FG-3FGA	PCT	FT-FTA	PCT	OFF	DEF	TOT	AVG	PF	A	TO	BLK	STL	PTS	AVG
at Colo. Christian	11/10/2023		04:23	0-0	.000	0-0	.000	0-0	.000	0	0	0	0.0	0	1	0	0	0	0	0.0
vs CSU Pueblo	11/11/2023		01:37	0-0	.000	0-0	.000	0-0	.000	0	0	0	0.0	0	0	0	0	0	0	0.0
Southwestern Okla.	11/17/2023		02:23	0-0	.000	0-0	.000	0-0	.000	0	0	0	0.0	1	0	3	0	0	0	0.0
King (TN)	11/18/2023		14:03	1-2	.500	0-1	.000	0-0	.000	0	5	5	1.3	2	3	2	0	0	2	0.5
Totals		0	22:26	1-2	.500	0-1	.000	0-0	.000	0	5	5	1.3	3	4	5	0	0	2	0.5

Player Averages

Games Played	Minutes/ game	Points/ game	FG Pct	3FG Pct	FT Pct	Rebounds/ game	Assists/ game	Turnovers/ game	Assist/Turnover ratio	Steals/ game	Blocks/ game
4	5.6	0.5	50.0	0.0	0.0	1.3	1.0	1.3	0.8	0.0	0.0



2023-24 Lubbock Christian Women's Basketball
Individual Game-by-Game
All games

Page 12/13
as of Nov 24, 2023

#33 JOHNSON, Deja

Opponent	Date	GS	MIN	Total		3-Pointers		Free throws		Rebounds											
				FG-FGA	PCT	3FG-3FGA	PCT	FT-FTA	PCT	OFF	DEF	TOT	AVG	PF	A	TO	BLK	STL	PTS	AVG	
King (TN)	11/18/2023		14:13	3-5	.600	2-4	.500	0-0	.000	0	2	2	2.0	3	0	1	0	1	8	8.0	
Totals		0	14:13	3-5	.600	2-4	.500	0-0	.000	0	2	2	2.0	3	0	1	0	1	8	8.0	

Player Averages

Games Played	Minutes/ game	Points/ game	FG Pct	3FG Pct	FT Pct	Rebounds/ game	Assists/ game	Turnovers/ game	Assist/Turnover ratio	Steals/ game	Blocks/ game
1	14.2	8.0	60.0	50.0	0.0	2.0	0.0	1.0	0.0	1.0	0.0



2023-24 Lubbock Christian Women's Basketball
Individual Game-by-Game
All games

Page 13/13
as of Nov 24, 2023

#40 SCHUMANN, Reese

Opponent	Date	GS	MIN	Total		3-Pointers		Free throws		Rebounds				PF	A	TO	BLK	STL	PTS	AVG
				FG-FGA	PCT	3FG-3FGA	PCT	FT-FTA	PCT	OFF	DEF	TOT	AVG							
Union (TN)	11/03/2023		05:00	0-0	.000	0-0	.000	2-2	1.000	0	0	0	0.0	0	0	0	0	0	2	2.0
Adams St.	11/05/2023		03:47	0-0	.000	0-0	.000	0-0	.000	0	0	0	0.0	1	0	0	0	0	0	1.0
at Colo. Christian	11/10/2023		09:26	0-1	.000	0-0	.000	0-0	.000	1	1	2	0.7	1	0	0	1	0	0	0.7
vs CSU Pueblo	11/11/2023		22:51	1-3	.333	0-0	.000	1-2	.500	2	1	3	1.3	4	1	0	0	2	3	1.3
Southwestern Okla.	11/17/2023		10:41	1-2	.500	0-0	.000	0-0	.000	1	2	3	1.6	3	1	1	0	0	2	1.4
King (TN)	11/18/2023		13:00	1-3	.333	0-0	.000	1-2	.500	2	1	3	1.8	0	1	3	1	2	3	1.7
Totals		0	64:45	3-9	.333	0-0	.000	4-6	.667	6	5	11	1.8	9	3	4	2	4	10	1.7

Player Averages

Games Played	Minutes/game	Points/game	FG Pct	3FG Pct	FT Pct	Rebounds/game	Assists/game	Turnovers/game	Assist/Turnover ratio	Steals/game	Blocks/game
6	10.8	1.7	33.3	0.0	66.7	1.8	0.5	0.7	0.8	0.7	0.3

LUBBOCK CHRISTIAN UNIVERSITY WOMEN'S BASKETBALL GAME NOTES

Union (TN) vs Lubbock Christian
11/03/23 5:00 pm at Lubbock, TX

Union (TN) 87 • 1-0,0-0 Gulf Sou

#	Player		Total		3-Ptr		Rebounds			PF	TP	A TO		Blk	Stl	Min
			FG-FGA	FG-FGA	FT-FTA	FT-FTA	Off	Def	Tot							
01	Shanique Lucas	g	4-10	1-3	9-10	0	2	2	4	18	2	1	1	1	20	
03	Jazalyn Anousinh	g	1-2	0-0	2-2	1	2	3	4	4	0	3	0	2	22	
04	Macey Lee	g	8-10	3-4	0-0	0	1	1	3	19	0	1	0	1	18	
20	Bethany Dillard	g	1-3	0-2	1-1	0	0	0	1	3	2	2	0	0	15	
24	Olivia Lee	g	1-2	0-0	2-4	0	3	3	0	4	0	2	0	0	12	
11	Brooke Hampel		0-1	0-0	2-4	2	2	4	3	2	4	4	0	0	24	
12	Emma Kallas		3-5	0-0	1-2	0	1	1	3	7	1	3	0	0	19	
13	Lauren West		5-11	5-9	0-0	0	2	2	2	15	2	0	0	0	18	
15	Shylee Morrison		0-1	0-1	2-2	1	0	1	2	2	1	2	0	1	16	
22	Kieli Robinson		2-4	0-0	0-0	3	2	5	3	4	0	0	0	0	11	
32	Leah Cauble		3-8	3-6	0-0	2	4	6	4	9	2	1	1	1	25	
Team						0	1	1								
Totals			28-57	12-25	19-25	9	20	29	29	87	14	19	2	6	200	
1st - FG %:			9-13	69.2%	2nd: 5-14	35.7%	3rd: 8-14	57.1%	4th: 6-16	37.5%	Game: 28-57	49.1%	Deadball			
3FG %:			1-3	33.3%	0-5	0.0%	3-5	60.0%	2-6	33.3%	12-25	48.0%	Rebounds			
FT %:			7-9	77.8%	2-2	100.0%	6-8	75.0%	4-6	66.7%	19-25	76.0%	3			

Lubbock Christian 78 • 0-1,0-0 Lone Sta

#	Player		Total		3-Ptr		Rebounds			PF	TP	A TO		Blk	Stl	Min
			FG-FGA	FG-FGA	FT-FTA	FT-FTA	Off	Def	Tot							
00	Grace Foster	f	7-12	0-2	2-5	1	6	7	3	16	4	8	1	0	31	
23	Martie McCoy	f	2-4	0-2	0-0	0	3	3	4	4	1	1	0	0	25	
02	Maci Maddox	g	8-11	0-0	0-0	0	4	4	4	16	4	4	0	1	39	
12	Taylor Thomas	g	3-5	1-1	2-2	1	2	3	5	9	1	1	0	0	21	
15	Shaylee Stovall	g	2-5	0-1	3-4	2	0	2	1	7	3	1	0	1	24	
01	Kennedy Chappell		1-4	0-2	6-7	1	1	2	2	8	1	0	0	0	21	
03	Audrey Robertson		4-10	1-2	3-4	0	3	3	3	12	2	1	0	3	29	
30	Audrey Spurgin		1-3	0-0	2-4	3	1	4	1	4	0	1	0	0	6	
40	Reese Schumann		0-0	0-0	2-2	0	0	0	0	2	0	0	0	0	4	
Team						1	3	4								
Totals			28-54	2-10	20-28	9	23	32	23	78	19	19	2	5	200	
1st - FG %:			9-14	64.3%	2nd: 6-16	37.5%	3rd: 7-13	53.8%	4th: 6-11	54.5%	Game: 28-54	51.9%	Deadball			
3FG %:			1-3	33.3%	0-2	0.0%	1-3	33.3%	0-2	0.0%	2-10	20.0%	Rebounds			
FT %:			1-2	50.0%	4-8	50.0%	6-8	75.0%	9-10	90.0%	20-28	71.4%	5			

Officials:

Technical fouls: Union (TN)-None. Lubbock Christian-None.

Attendance: 347

2023-24 Women's Basketball. Round: 0. Lubbock Christian vs Union (TN). Played

Score by periods	1st	2nd	3rd	4th	Total
Union (TN)	32	12	25	18	87
Lubbock Christian	20	16	21	21	78

Adams St. vs Lubbock Christian
11/05/23 5:00 pm at Lubbock, TX

Adams St. 65 • 1-1,0-0 RMAC

#	Player		Total		3-Ptr		Rebounds			PF	TP	A TO		Blk	Stl	Min
			FG-FGA	FG-FGA	FT-FTA	FT-FTA	Off	Def	Tot							
22	Christabel Longe	c	6-8	1-1	0-0	4	2	6	3	13	0	2	2	0	18	
01	Harmanie Dominguez	g	6-10	3-4	2-2	0	5	5	4	17	3	1	1	1	36	
11	Elaina Watson		1-3	0-0	4-4	1	4	5	2	6	3	2	0	0	28	
24	Kiiyani Antielu	g	2-6	1-3	0-0	1	3	4	1	5	5	4	0	1	27	
24	Riahana Davis	g	2-9	1-5	3-4	1	4	5	4	8	0	3	0	2	33	
03	Destinee Paulk		0-0	0-0	0-0	0	0	0	0	0	0	1	0	0	4	
05	Kayla Harris		4-11	2-3	2-2	2	6	8	2	12	1	1	1	2	21	
10	Angelline Nageak		0-2	0-1	2-2	0	0	0	3	2	1	2	0	0	18	
14	Nyeniea John		1-2	0-0	0-0	0	2	2	2	2	0	2	0	0	15	
Team						1	0	1								
Totals			22-51	8-17	13-14	10	26	36	21	65	13	19	4	6	200	
1st - FG %:			6-12	50.0%	2nd: 5-13	38.5%	3rd: 7-14	50.0%	4th: 4-12	33.3%	Game: 22-51	43.1%	Deadball			
3FG %:			2-3	66.7%	0-5	0.0%	2-5	40.0%	3-5	60.0%	1-4	25.0%	Rebounds			
FT %:			0-0	0.0%	5-6	83.3%	2-2	100.0%	6-6	100.0%	8-17	47.1%	0			

Lubbock Christian 69 • 1-1,0-0 Lone Sta

#	Player		Total		3-Ptr		Rebounds			PF	TP	A TO		Blk	Stl	Min
			FG-FGA	FG-FGA	FT-FTA	FT-FTA	Off	Def	Tot							
00	Grace Foster	f	6-14	3-6	13-13	0	8	8	1	28	3	3	1	0	39	
23	Martie McCoy	f	2-6	0-1	1-2	1	4	5	3	5	1	0	1	2	31	
02	Maci Maddox	g	6-11	2-3	0-0	0	4	4	1	14	4	2	0	3	40	
03	Audrey Robertson		3-9	0-1	0-0	1	1	2	2	6	1	3	0	1	31	
15	Shaylee Stovall	g	1-4	1-3	8-8	0	0	0	1	11	2	1	0	1	26	
01	Kennedy Chappell		1-2	0-0	0-0	0	0	0	1	2	1	0	0	0	9	
12	Taylor Thomas		1-2	1-1	0-0	0	3	3	1	3	0	1	0	2	14	
30	Audrey Spurgin		0-0	0-0	0-0	0	0	0	3	0	0	2	0	0	6	
40	Reese Schumann		0-0	0-0	0-0	0	0	0	1	0	0	0	0	0	4	
Team						0	0	0								
Totals			20-48	7-15	22-23	2	20	22	14	69	12	12	2	9	200	
1st - FG %:			6-15	40.0%	2nd: 5-9	55.6%	3rd: 4-13	30.8%	4th: 1-3	45.5%	Game: 20-48	41.7%	Deadball			
3FG %:			3-6	50.0%	2-3	66.7%	1-3	33.3%	1-3	33.3%	7-15	46.7%	Rebounds			
FT %:			1-1	100.0%	11-12	91.7%	2-2	100.0%	8-8	100.0%	22-23	95.7%	1			

Officials:

Technical fouls: Adams St.-None. Lubbock Christian-None.

Attendance: 287

2023-24 Women's Basketball. Round: 0. Adams St. vs Lubbock Christian. Played a

Score by periods	1st	2nd	3rd	4th	Total
Adams St.	14	17	19	15	65
Lubbock Christian	16	23	11	19	69

Lubbock Christian vs Colo. Christian
11/10/23 3:00 pm at Lakewood, CO

Lubbock Christian 67 • 2-1,0-0 Lone Sta

#	Player		Total		3-Ptr		Rebounds			PF	TP	A		TO	Blk	Stl	Min
			FG-FGA	FG-FGA	FT-FTA	Off	Def	Tot									
00	Grace Foster	f	1-5	0-2	7-8	0	6	6	4	9	0	7	0	0	0	27	
23	Martie McCoy	f	2-4	0-0	2-2	1	4	5	3	6	1	3	0	0	0	27	
02	Maci Maddox	g	4-14	0-2	4-4	1	5	6	3	12	4	1	0	3	45		
03	Audrey Robertson		6-9	2-2	2-2	1	5	6	2	16	3	2	0	1	40		
15	Shaylee Stovall	g	3-6	2-4	0-0	0	1	1	1	8	1	1	0	1	20		
01	Kennedy Chappell		3-4	0-1	4-6	1	2	3	0	10	1	0	0	0	20		
12	Taylor Thomas		0-1	0-1	0-0	0	0	0	0	0	0	2	0	1	11		
30	Audrey Spurgin		2-5	0-0	2-4	0	2	2	3	6	0	2	1	1	22		
31	Tia Johnson		0-0	0-0	0-0	0	0	0	0	0	1	0	0	0	4		
40	Reese Schumann		0-1	0-0	0-0	1	1	2	1	0	0	0	1	0	9		
Team						1	4	5									
Totals			21-49	4-12	21-26	6	30	36	17	67	11	19	2	7	225		
1st - FG %:			6-14	42.9%	2nd: 6-10	60.0%	3rd: 4-12	33.3%	4th: 3-10	30.0%	Game: 21-49		42.9%	Deadball			
3FG %:			2-5	40.0%	1-4	25.0%	1-2	50.0%	0-1	0.0%	4-12		33.3%	Rebounds			
FT %:			0-0	0.0%	5-5	100.0%	5-6	83.3%	21-26	80.8%	3						

Colo. Christian 62 • 0-1,0-0 RMAC

LUBBOCK CHRISTIAN UNIVERSITY WOMEN'S BASKETBALL GAME NOTES

Southwestern Okla. vs Lubbock Christian 11/17/23 6:00 pm at Lubbock, TX

Southwestern Okla. 54 • 2-2,0-0 GAC

#	Player	Total		3-Ptr	Rebounds			PF	TP	A	TO	Blk	Stl	Min
		FG-FGA	FG-FGA		Off	Def	Tot							
02	Hailey Grant	f	6-13	1-1	2-3	3	9	12	3	15	2	4	1	24
10	Rees Berkey	f	0-2	0-2	0-0	0	0	0	2	0	0	1	1	2
03	Lanie Gooch	g	2-3	1-1	2-2	2	0	2	3	7	1	1	0	3
05	Averi Zinn	g	3-15	2-9	1-2	0	1	1	1	9	2	2	0	2
13	Mason Jones	g	2-4	2-3	0-0	2	1	3	1	6	3	3	0	2
00	Beyonce Lane		1-4	0-0	0-0	0	1	1	1	2	0	1	1	1
20	Chloe Cantrell		1-3	1-2	0-0	0	1	1	2	3	0	1	0	2
22	Libbi Zinn		4-7	0-2	0-0	0	1	1	1	8	0	2	0	0
23	Maebry Shields		1-1	0-0	0-0	0	0	0	1	2	0	1	0	1
24	Jamaya Johnson		1-3	0-0	0-0	2	1	3	1	2	0	2	0	0
	Team				1	1	2							
	Totals		21-55	7-20	5-7	10	16	26	16	54	8	18	3	15
1st - FG %:		6-13	46.2%	2nd: 5-13	38.5%	3rd: 4-14	28.6%	4th: 6-15	40.0%	Game: 21-55	38.2%	Deadball		
3FG %:		2-4	50.0%	2-6	33.3%	1-4	25.0%	7-20	35.0%	Rebounds		1		
FT %:		2-3	66.7%	0-0	0.0%	2-2	100.0%	1-2	50.0%	5-7	71.4%			

Lubbock Christian 61 • 4-1,0-0 Lone Sta

#	Player	Total		3-Ptr	Rebounds			PF	TP	A	TO	Blk	Stl	Min
		FG-FGA	FG-FGA		Off	Def	Tot							
00	Grace Foster	f	3-7	0-1	4-4	0	9	9	1	10	4	6	1	0
23	Martie McCoy	f	1-2	0-0	1-1	0	3	3	2	3	0	4	1	0
02	Maci Maddox	g	6-13	1-3	2-2	1	2	3	0	15	2	2	0	2
03	Audrey Robertson	g	6-8	1-2	1-1	0	2	2	1	14	6	2	0	1
15	Shaylee Stovall	g	3-5	2-3	2-2	0	1	1	2	10	0	1	0	1
01	Kennedy Chappell		1-1	0-0	1-2	0	1	1	0	3	0	1	0	1
12	Taylor Thomas		0-2	0-1	2-2	1	0	1	0	2	1	1	0	1
30	Audrey Spurgin		1-4	0-0	0-0	3	3	6	0	2	1	0	0	0
31	Tia Johnson		0-0	0-0	0-0	0	0	0	1	0	0	3	0	0
40	Reese Schumann		1-2	0-0	0-0	1	2	3	3	2	1	1	0	0
	Team				0	2	2							
	Totals		22-44	4-10	13-14	6	25	31	10	61	15	22	2	6
1st - FG %:		9-12	75.0%	2nd: 4-8	50.0%	3rd: 5-10	50.0%	4th: 4-14	28.6%	Game: 22-44	50.0%	Deadball		
3FG %:		1-1	100.0%	1-3	33.3%	2-4	50.0%	0-2	0.0%	4-10	40.0%	Rebounds		
FT %:		6-7	85.7%	2-2	100.0%	2-2	100.0%	3-3	100.0%	13-14	92.9%	1		

Officials:

Technical fouls: Southwestern Okla.-None. Lubbock Christian-None.

Attendance: 208

2023-24 Women's Basketball. Round: 0. Lubbock Christian vs Southwestern Okla..

Score by periods	1st	2nd	3rd	4th	Total
Southwestern Okla.	16	12	12	14	54
Lubbock Christian	25	11	14	11	61

King (TN) vs Lubbock Christian 11/18/23 7:30 pm at Lubbock, TX

King (TN) 42 • 0-5,0-0 Conferen

#	Player	Total		3-Ptr	Rebounds			PF	TP	A	TO	Blk	Stl	Min
		FG-FGA	FG-FGA		Off	Def	Tot							
02	Alexa Gramann	g	0-2	0-0	0-2	3	3	6	1	0	1	1	0	0
05	Brianna Dunbar	g	1-4	0-1	6-6	0	1	1	0	8	0	3	0	2
11	Alayna Smith	g	0-4	0-0	0-0	0	1	1	3	0	0	4	0	0
12	Jaden Potts	g	0-1	0-0	1-2	1	1	2	0	1	0	0	0	0
22	Ashley Allen	g	5-7	0-0	2-3	4	5	9	1	12	1	1	1	1
01	Michelle Gallegos		0-0	0-0	2-2	0	1	1	1	2	0	0	0	0
03	Jhayda McKinney		0-3	0-3	0-0	0	1	1	1	0	0	2	0	0
04	Jaylasia Office		2-6	0-4	2-2	0	0	0	3	6	1	3	0	0
13	Kiley Beach		1-2	0-0	1-2	1	2	3	1	3	0	0	0	0
15	Jaelyn West		2-10	1-3	2-6	1	2	3	2	7	0	2	0	1
24	Torey Walker		0-4	0-0	0-2	1	2	3	3	0	0	0	1	0
32	Raven Addison		1-6	0-0	1-2	1	1	2	1	3	0	1	0	1
33	Maddie Bryant		0-2	0-2	0-0	0	0	0	0	0	0	0	0	0
	Team				5	1	6							
	Totals		12-51	1-13	17-29	17	21	38	17	42	3	19	2	5
1st - FG %:		5-13	38.5%	2nd: 2-13	15.4%	3rd: 4-13	30.8%	4th: 1-12	8.3%	Game: 12-51	23.5%	Deadball		
3FG %:		1-4	25.0%	0-3	0.0%	0-1	0.0%	0-5	0.0%	1-13	7.7%	Rebounds		
FT %:		1-3	33.3%	7-10	70.0%	1-2	50.0%	8-14	57.1%	17-29	58.6%	6		

Lubbock Christian 82 • 5-1,0-0 Lone Sta

#	Player	Total		3-Ptr	Rebounds			PF	TP	A	TO	Blk	Stl	Min
		FG-FGA	FG-FGA		Off	Def	Tot							
00	Grace Foster	f	4-10	1-2	0-0	0	5	5	0	9	2	1	0	1
23	Martie McCoy	f	1-2	0-0	2-2	0	3	3	3	4	4	1	1	0
02	Maci Maddox	g	6-8	1-1	1-2	0	3	3	1	14	1	0	0	1
03	Audrey Robertson	g	3-4	1-2	1-1	0	1	1	1	8	3	1	0	0
15	Shaylee Stovall	g	1-1	1-1	0-0	0	1	1	1	3	4	0	0	1
01	Kennedy Chappell		2-6	0-2	0-0	1	2	3	3	4	1	0	0	2
04	Kimber Mathews		1-2	1-1	2-2	1	0	1	3	5	0	0	0	0
11	Taylor Allen		4-7	1-1	0-0	2	1	3	0	9	2	0	0	1
12	Taylor Thomas		1-2	0-0	3-4	0	0	0	2	5	2	1	0	1
30	Audrey Spurgin		2-2	0-0	4-6	0	3	3	1	8	0	0	0	0
31	Tia Johnson		1-2	0-1	0-0	0	5	5	2	2	3	2	0	0
33	Deja Johnson		3-5	2-4	0-0	0	2	2	3	8	0	1	0	1
40	Reese Schumann		1-3	0-0	1-2	2	1	3	0	3	1	3	1	2
	Team				0	1	1							
	Totals		30-54	8-15	14-19	6	28	34	20	82	23	13	2	10
1st - FG %:		5-12	41.7%	2nd: 9-15	60.0%	3rd: 9-15	60.0%	4th: 7-12	58.3%	Game: 30-54	55.6%	Deadball		
3FG %:		1-3	33.3%	2-4	50.0%	3-4	75.0%	2-4	50.0%	8-15	53.3%	Rebounds		
FT %:		2-2	100.0%	3-5	60.0%	7-8	87.5%	2-4	50.0%	14-19	73.7%	2		

Officials:

Technical fouls: King (TN)-None. Lubbock Christian-None.

Attendance: 192

2023-24 Women's Basketball. Round: 0. King (TN) vs Lubbock Christian. Played a

Score by periods	1st	2nd	3rd	4th	Total
King (TN)	12	11	9	10	42
Lubbock Christian	13	23	28	18	82

OPPONENT BREAKDOWN

Southern Nazarene (5-0, 0-0)



Location: Bethany, Okla.

Enrollment: 2,100

Head Coach: Trent May

Assistant Coaches: Kayla Tucker, Sydni Salvato

ALL-TIME MEETINGS (SNU Leads 35-14)

Date	Winner	Score
11/20/93	SNU	96-53
1/26/95	SNU	94-64
2/16/95	SNU	92-46
1/25/96	SNU	72-58
2/17/96	SNU	77-44
3/2/96	SNU	83-39
2/1/97	LCU	68-67
2/27/97	SNU	75-62
1/18/98	SNU	80-62
2/12/98	SNU	80-49
3/6/98	SNU	89-56
1/14/99	SNU	89-54
2/13/99	SNU	94-63
1/29/00	SNU	75-63
2/24/00	SNU	70-54
11/23/00	SNU	92-62
1/20/01	SNU	80-40
2/15/01	SNU	87-44
11/23/01	SNU	80-57
1/5/02	SNU	64-31
2/7/02	SNU	65-55
3/1/02	SNU	76-67
1/16/03	SNU	73-60
3/1/03	LCU	93-89
11/28/03	SNU	82-49
1/24/04	SNU	91-61
2/12/04	SNU	75-66
3/6/04	SNU	71-56
1/29/05	LCU	81-74
2/17/05	SNU	75-50
1/21/06	LCU	63-52
2/9/06	LCU	69-53
1/4/07	LCU	66-55
2/24/07	SNU	79-76
1/31/08	SNU	61-88
3/1/08	SNU	68-73
1/8/09	SNU	71-64
2/28/09	SNU	70-63
1/14/10	LCU	57-55
2/13/10	LCU	72-62
1/6/11	LCU	70-63
2/5/11	LCU	72-63
3/4/11	SNU	75-67
12/31/11	LCU	81-64
1/28/12	LCU	59-53
3/2/12	SNU	81-73
11/16/18	LCU	65-40
11/29/19	LCU	56-47

ROSTER

#	Full Name	Pos	Ht.	Yr	Hometown / High School
1	Umi Otsuka	G/F	5-5	Fr.	Tokyo, Japan / Myojo Gakuen High School
2	Carley Gasaway	G	5-7	So.	Choctaw, Okla. / Choctaw
4	Lauryn Reither	G	5-7	Gr.	Oklahoma City, Okla. / Putnam City
5	Hannah Giddey	F	6-2	Sr.	Melbourne, Australia / Oral Roberts
10	Jillian Crawford	G	5-10	Fr.	Piedmont / Piedmont
11	Kimalee Cook	G	5-5	Jr.	Whitewater, Kan / Circle
12	Emily Monaghan	G	5-9	Gr.	Melbourne, Australia / Haileybury
14	Jena Bay	G	5-9	R-So.	Shattuck, Okla. / Shattuck
15	Georgia Adams	G	5-10	Gr.	Perth, Australia / Mandurah Catholic
20	Shannon Burton	G	5-7	So.	Maitland, Australia / Hunter Valley Grammar School
21	Grace Pippett	G	5-11	Fr.	Broken Arrow, OK / Broken Arrow
22	Ali Francis	G	5-6	Fr.	Latham, Australia / St John Paul II College & Canberra Senior Secondary School
23	Hannah Duncan	G/F	6-0	So.	Perth, Australia / St. Mary's Anglican Girls' School
24	Abbie Jiles	G	5-7	Gr.	Searcy, AR / Henderson State
25	Megan Eischen	G	5-6	Fr.	Kingfisher, OK / Homeschool
34	Anna Coccoli	C	6-1	Jr.	Cremona, Italy / I.I.S. Janello Torriani

TEAM STATISTICS

Game Records

Record	Overall	Home	Away	Neutral
ALL GAMES	5-0	2-0	1-0	2-0
CONFERENCE	0-0	0-0	0-0	0-0
NON-CONFERENCE	5-0	2-0	1-0	2-0

Score by Periods

Team	1st	2nd	3rd	4th	OT	TOT
Southern Nazarene	75	74	109	88	0	346
Opponents	48	67	88	52	0	255

Team Box Score

No.	Player	GP-GS	MIN	AVG	FG-FGA	FG%	3FG-3FGA	3FG%	FT-FTA	FT%	OFF	DEF	TOT	AVG	PF	DQ	A	TO	BLK	STL	PTS	AVG
4	REITHER, Lauryn	5-5	175:51	35.2	34-54	.630	10-22	.455	12-18	.667	3	24	27	5.4	11	0	15	19	0	16	90	18.0
12	MONAGHAN, Emily	5-5	161:43	32.3	20-46	.435	4-16	.250	16-23	.696	5	12	17	3.4	8	0	8	13	0	8	60	12.0
5	GIDDEY, Hannah	5-5	161:40	32.3	26-60	.433	0-0	.000	5-13	.385	10	44	54	10.8	11	0	28	16	22	4	57	11.4
24	JILES, Abbie	5-5	177:35	35.5	20-47	.426	4-18	.222	12-17	.706	11	21	32	6.4	8	0	8	7	3	10	56	11.2
20	BURTON, Shannon	5-5	114:51	23.0	10-28	.357	0-2	.000	12-14	.857	3	11	14	2.8	12	0	2	7	1	2	32	6.4
14	BAY, Jena	5-0	86:54	17.4	9-26	.346	4-15	.267	4-6	.667	7	9	16	3.2	12	1	3	8	0	2	26	5.2
23	DUNCAN, Hannah	4-0	48:52	12.2	4-9	.444	4-7	.571	0-0	.000	2	6	8	2.0	3	0	3	8	0	1	12	3.0
2	GASAWAY, Carley	3-0	23:45	7.9	1-8	.125	0-4	.000	2-2	1.000	1	2	3	1.0	3	0	0	0	0	2	4	1.3
10	CRAWFORD, Jillian	5-0	32:20	6.5	1-8	.125	1-4	.250	2-2	1.000	3	4	7	1.4	5	0	4	2	0	0	5	1.0
34	COCCOLI, Anna	3-0	03:53	1.3	1-1	1.000	0-0	.000	0-0	.000	1	0	1	0.3	0	0	1	0	0	0	2	0.7
1	OTSUKA, Umi	4-0	09:13	2.3	1-2	.500	0-0	.000	0-0	.000	0	0	0	0.0	1	0	0	1	0	0	2	0.5
11	COOK, Kimalee	2-0	03:22	1.7	0-0	.000	0-0	.000	0-0	.000	1	1	2	1.0	0	0	0	0	0	0	0	0.0
Team											6	16	22					5				
Total		5	1000		127-289	.439	27-88	.307	65-95	.684	53	150	203	40.6	74	1	72	86	26	45	346	69.2
Opponents		5	1000		94-299	.314	17-93	.183	50-72	.694	63	121	184	36.8	100	2	39	97	11	45	255	51.0

2023-2024 RESULTS

Date	Opponent	Score
11/10/2023	vs Minnesota St.	W 73-56
11/11/2023	vs Minot St.	W 60-42
11/15/2023	at Ark.-Fort Smith	W 71-55
11/18/2023	Central Okla.	W 69-50
11/22/2023	Mo. Southern St.	W 73-52

SINGLE-SEASON RECORDS

Points Scored:

657	Beth Capps	1996-97
575	Grace Foster	2022-23
574	Beth Capps	1995-96
562	Kelsey Canavan	2011-12
560	Jordan Hampton	2006-07

Points Per Game Average:

22.7	Beth Capps	1996-97
20.0	Kechia Mason	1997-98
19.9	Burgundy Bass	1989-90
18.7	Nettie Gilbreath	1986-87

Field Goals Attempted:

516	Tonya Ivie	1981-82
492	Beth Capps	1995-96
435	Darla Lynch	1980-81
429	Kelsey Canavan	2011-12
425	Beth Capps	1996-97

Field Goals Made:

237	Beth Capps	1996-97
236	Kelsey Canavan	2011-12
217	Tonya Ivie	1981-82
210	Beth Capps	1995-96
202	Mamy N'Kolomoni	2000-01

Field Goal Percentage (Min. 300 Att.):

.580	Nicole Hampton	2015-16
.561	Roberta Ross	1986-87
.558	Beth Capps	1996-97
.556	Tess Bruffey	2015-16
.554	Carol Hise	1990-91

Assists:

221	Krista Lent	1990-91
211	Nicole Hampton	2015-16
197	Sierra Lovorn	2007-08
192	Nicole Hampton	2012-13
189	Krista Lent	1989-90

Three Pointers Attempted:

240	Ashton Duncan	2021-22
216	Kelsey Hoppel	2015-16
203	Angie Taylor	1997-98
191	Ashton Duncan	2021-22
188	Sierra Lovorn	2007-08

Three Pointers Made:

90	Kelsey Hoppel	2015-16
90	Ashton Duncan	2021-22
79	Ashton Duncan	2019-20
74	Kelsey Hoppel	2012-13
74	Jordan Hampton	2007-08
74	Angie Taylor	1997-98

Three Point Percentage (Min. 100 Att.):

.517	Allie Schulte	2018-19
.497	Jordan Hampton	2007-08
.469	Kelsey Hoppel	2013-14
.466	Jordan Hampton	2006-07
.463	Bailey Haist	2014-15

Steals:

115	Krista Lent	1990-91
107	Nicole Hampton	2015-16
105	Sherry Blackwell	1990-91
102	Tina Phillips	1991-92
99	Selestine Hurst	1996-97

Free Throws Attempted:

228	Mamy N'Kolomoni	2001-02
212	Beth Capps	1996-97
211	Carolyn Manning	2007-08
201	Emily Pool (Atkins)	2010-11
197	Emily Pool (Atkins)	2011-12

Free Throws Made:

177	Carolyn Manning	2007-08
166	Beth Capps	1996-97
157	Emily Pool (Atkins)	2011-12
156	Jordan Hampton	2006-07
153	Mamy N'Kolomoni	2001-02

Free Throw Percentage (Min. 50 Att.):

.938	Kelsey Hoppel	2013-14
.924	Nicole Hampton	2011-12
.922	Caitlyn Cunyus	2017-18
.921	Nicole Hampton	2012-13
.915	Grace Foster	2022-23

Blocked Shots:

129	Tess Bruffey	2017-18
113	Kellyn Schneider	2014-15
108	Tess Bruffey	2016-17
91	Kellyn Schneider	2015-16
86	Tess Bruffey	2014-15

Rebounds:

311	Grace Foster	2022-23
310	Nicole Hampton	2012-13
288	Kellyn Schneider	2014-15
282	Carolyn Manning	2007-08
281	Tess Bruffey	2017-18

Rebounds Per Game:

10.5	Laura Geurin	1983-84
10.3	Kellyn Schneider	2014-15
10.1	Nettie Gilbreath	1986-87
9.9	Darla Lynch	1981-82
9.2	Mamy N'Kolomoni	2000-01

CAREER RECORDS

Points Scored:

1,796	Nicole Hampton	2011-16
1,773	Beth Capps	1995-97
1,767	Jordan Hampton	2005-09
1,728	Tess Bruffey	2014-18
1,725	Emily Pool (Atkins)	2010-14

Points Per Game Average:

17.1	Nettie Gilbreath	1985-87
16.1	Beth Capps	1993-97
15.8	Burgundy Bass	1987-90
15.4	Darla Lynch	1979-83

Field Goals Attempted:

1,387	Darla Lynch	1979-83
1,352	Tess Bruffey	2014-18
1,316	Beth Capps	1993-97
1,278	Mamy N'Kolomoni	1998-02
1,213	Emily Pool (Atkins)	2010-14

Field Goals Made:

640	Beth Capps	1993-97
631	Tess Bruffey	2014-18
628	Mamy N'Kolomoni	1998-02
590	Nicole Hampton	2011-16
588	Darla Lynch	1979-83

Field Goal Percentage (Min. 700 Att.):

.585	Haley Fowler	416-711
.547	Kelsey Canavan	416-760
.540	Nicole Hampton	590-1093
.511	Robertta Ross	362-709
.510	Maddi Chitsey	503-987

Assists:

659	Nicole Hampton	2011-16
633	Sierra Lovorn (Wilcox)	2005-09
439	Haley Burton	2010-15
421	Allie Schulte	2017-22
397	Brittany Roberts (Hampton)	2008-12

Three Pointers Attempted:

708	Ashton Duncan	2017-->
672	Sierra Lovorn (Wilcox)	2005-09
646	Kelsey Hoppel	2011-16
560	Jordan Hampton	2005-09
559	Haley Burton	2010-15

Three Pointers Made:

276	Ashton Duncan	2017--22
272	Kelsey Hoppel	2011-16
248	Jordan Hampton	2005-09
234	Sierra Lovorn (Wilcox)	2005-09
204	Haley Burton	2010-15

Three Point Percentage (Min. 200 Att.):

.444	Allie Schulte	176-396
.443	Jordan Hampton	192-407
.421	Kelsey Hoppel	272-646
.407	Brittany Roberts (Hampton)	154-378
.407	Bailey Haist	148-364

Steals:

330	Nicole Hampton	2011-16
320	Allie Schulte	2017-22
271	Sherry Brown	1979-83
235	Sherry Blackwell	1988-91
226	Tabitha Qubty-Sellers	2000-04

Free Throws Attempted:

725	Emily Pool (Atkins)	2010-14
706	Mamy N'Kolomoni	1998-02
586	Beth Capps	1993-97
560	Nicole Hampton	2011-16
519	Jordan Hampton	2005-09

Free Throws Made:

565	Emily Pool (Atkins)	2010-14
510	Nicole Hampton	2011-16
459	Brittany Roberts (Hampton)	2008-12
456	Mamy N'Kolomoni	1998-02
449	Jordan Hampton	2005-09

Free Throw Percentage (Min. 100 Att.):

.911	Nicole Hampton	510-560
.874	Brittany Roberts (Hampton)	458-525
.873	Olivia Robertson	282-323
.865	Jordan Hampton	449-519
.848	Severyn Smith	224-264

Blocked Shots:

396	Tess Bruffey	2014-18
204	Kellyn Schneider	2014-16
174	Suzanne Copeland	1988-92
149	Maddi Chitsey	2016-20
122	Candace Clenney	2002-06

Rebounds:

1,053	Nicole Hampton	2011-16
911	Mamy N'Kolomoni	1998-02
845	Tess Bruffey	2014-18
838	Darla Lynch	1979-83
732	Carol Hise	1990-94

Rebounds Per Game:

9.39	Nettie Gilbreath	1985-87
8.38	Darla Lynch	1979-83
8.10	Nicole Hampton	2011-16
8.09	Kellyn Schneider	2014-16
7.92	Sharon Marion	1984-86

SINGLE GAME TEAM RECORDS

Points Scored:	
Lady Chaps:	125 vs Whittier College (12/28/94)
Opponents:	110 Panhandle State (2/11/93)
Individual:	38 Beth Capps (1/22/96)
Field Goals Made:	
Lady Chaps:	52 vs Whittier College (1/28/94)
Opponents:	44 Midwestern State (1/9/87)
Individual:	16 Nettie Gilbreath (1/10/87), Beth Capps (11/22/96 & 2/1/96)
Field Goals Attempted:	
Lady Chaps:	94 vs McMurry (2/26/82)
Opponents:	95 Bishop College (1/7/82)
Individual:	29 Beth Capps (2/1/96)
Field Goal Percentage:	
Lady Chaps:	.692 (36-52) vs Eastern New Mexico (11/29/14)
Opponents:	.714 Panhandle State (1/15/90)
Three Pointers Made:	
Lady Chaps:	18 vs Oklahoma Panhandle State (2/18/17)
Opponents:	16 Cameron (12/19/19)
Individual:	8 - Ashton Duncan & (1/22/22) & (12/11/20), Bailey Haist (1/2/17)
Three Pointers Attempted:	
Lady Chaps:	44 vs Oklahoma City (12/10/15)
Opponents:	41 Whittier College (12/28/94)
Individual:	19 Burgundy Bass (1/18/90)
Three Pointer Percentage:	
Lady Chaps:	.667 (12-18) vs Western New Mexico (11/17/17)
Opponents:	.722 (13-18) Texas Woman's (3/4/23)
Free Throws Made:	
Lady Chaps:	40 vs Panhandle State (1/26/84)
Opponents:	38 St. Gregory's (2/2/02)
Individual:	15 Nicole Hampton (1/14/16)
Free Throws Attempted:	
Lady Chaps:	51 vs Panhandle State (2/11/93)
Opponents:	46 - 2 times
Individual:	17 Becky Hinojos (2/11/93), Mamy N'Kolomoni (3/1/02) and Nicole Hampton (1/14/16)
Free Throw Percentage:	
Lady Chaps:	1.000 (22-22) vs. Newman (2/15/18)
Opponents:	1.000 (21-21) St. Edward's (2/25/17)
Individual:	1.000 (14-14) Nicole Hampton (1/16/14)
Rebounds:	
Lady Chaps:	73 - 2 times (last: vs. Dallas Christian 12/31/09)
Opponents:	73 McMurry (1/23/82)
Individual:	20 Mamy N'Kolomoni (2/24/01)
Assists:	
Lady Chaps:	39 vs McMurry (1/17/89)
Opponents:	29 McMurry (1/11/88)
Individual:	13 Sierra Lovorn (2/10/07)
Steals:	
Lady Chaps:	38 vs McMurry (11/12/91)
Opponents:	27 St. Edwards (11/13/87)
Individual:	12 Tina Phillips (11/12/91)
Blocks:	
Lady Chaps:	17 vs. Okla. Panhandle St. (1/19/15) vs. Hardin-Simmons (2/19/91)
Individual:	10 Tess Bruffey - 3 times (12/13/14, 11/26/16, 2/9/17)
Turnovers:	
Lady Chaps:	40 vs. McMurry (2/23/80)
Opoonents:	41 Howard Payne (11/12/90)

RIP GRIFFIN CENTER RECORDS

Lady Chap Team Records

Points:	113 vs Northern New Mexico (11/7/09)
Field Goals:	49 vs Dallas Christian (11/4/08)
Field Goals Att.:	91 vs Huston-Tillotson (11/17/00)
Field Goal Pct.:	.692 vs Eastern New Mexico (36-52) (11/29/14)
3-Pointers:	18 vs Oklahoma Panhandle State (2/18/17)
3-Pointers Att.:	44 vs Oklahoma City (12/10/15)
3-Pointers Pct.:	.667 vs USAO (2/28/08) .667 vs Texas - Permian Basin (2/21/15) .667 vs. Western New Mexico (11/17/17)
Free Throws:	35 vs Rogers State (1/19/12)
Free Throw Att.:	44 vs Oklahoma Baptist (2/1/03)
Free Throw Pct.:	1.000 vs Newman (22-22) (2/15/18)
Rebounds:	62 vs Huston-Tillotson (11/17/00)
Assists:	34 vs Dallas Christian (11/4/08)
Blocked Shots:	14 vs Mid-America Christian (11/24/14)
Steals:	26 vs National Christian (12/8/01)

Lady Chap Individual Records

Points:	36 - Emily Pool (Atkins) vs Northern New Mexico College (11/5/10)
Field Goals:	13 - Mamy N'Kolomoni vs Huston-Tillotson (11/17/00)
Field Goals Att.:	22 - Cari Bigham vs UTPB
Field Goal Pct. (10 attempts):	.917 - Brittany Blackmon (11-12) vs Univ. of the Southwest (11/10/08)
3-Pointers:	8 - Ashton Duncan (twice) vs St. Mary's (1/22/22) & (12/11/20)
3-Pointers Att.:	13 - Ashton Duncan vs. St. Mary's (1/22/22)
3-Point Pct. (5 attempts):	1.000 - Kelsey Hoppel (5-5) vs Okla. Christian (2/8/14) 1.000 - Bailey Haist (5-5) vs. St. Edward's (2/19/15)
Free Throws:	13 - Grace Foster (11/5/23 vs. Adams State)
Free Throws Att.:	17 - Mamy N'Kolomoni vs Southern Nazarene (3/1/02)
Free Throw Pct. (10 attempts):	1.00 - Grace Foster (13-13) vs. Adams St. (11/5/23) 1.00 - Laynee Burr (12-12) vs. Midwestern St. (2/4/22) 1.00 - Tabitha Qubty-Sellers (10-10) vs Okla. Christian (1/18/01) 1.00 - Emily Pool (10-10) vs. Newman (11/23/13) 1.00 - Allie Schulte (10-10) vs. Daemen (11/20/21)
Rebounds:	20 - Mamy N'Kolomoni vs St. Gregory's (2/24/01)
Assists:	13 - Sierra Lovorn vs Oklahoma Baptist (2/10/07)
Blocked Shots:	10 - Tess Bruffey vs. St. Mary's (2/9/17)

RADIO / TV HEADSHOT ROSTER



0 - GRACE FOSTER
Jr. | 6-1 | FW
Childress, Texas



1 - KENNEDY CHAPPELL
Fr.. | 5-9
Heath, Texas



2 - MACI MADDOX
Sr.. | 5-7
Lubbock, Texas



3 - AUDREY ROBERTSON
Sr. | 5-8 | G
Kerrville, Texas



4 - KIMBER MATHEWS
Fr. | 5-9 | G
Gruver, Texas



5 - TAYLOR ALLEN
Fr. | 5-9 | G
Roscoe, Texas



12 - TAYLOR THOMAS
So. | 5-9 | G
Canyon, Texas



15 - SHAYLEE STOVALL
Sr. | 5-6 | G
Idalou, Texas



22 - RYLEE VERDUIN
Fr. | 6-2 | FW
Wylie, Texas



23 - MARTIE MCCOY
So. | 5-11 | FW/G
Muenster, Texas



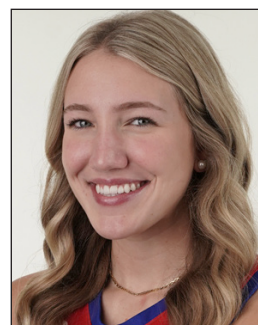
30 - AUDREY SPURGIN
Jr. | 6-2 | P
Fredericksburg, Texas



31 - TIA JOHNSON
So. | 5-9 | FW/G
Lubbock, Texas



33 - DEJA JOHNSON
So. | 5-9 | FW/G
Lubbock, Texas



40 - REESE SCHUMANN
Jr. | 6-1 | P
Houston, Texas



STEVE GOMEZ
Head Coach
21st Season



LANDON GOMEZ
Assistant Coach
1st Season



KAYCIE WILSON
Assistant Coach
9th Season



JULIO PACHECO
Volunteer Assistant Coach
4th Season



COURTNEY BURGESS
Athletic Trainer
1st Season