



LSC

## LUBBOCK CHRISTIAN UNIVERSITY

## 2023-24 WOMEN'S BASKETBALL GAME NOTES

MEMBERS OF THE LONE STAR CONFERENCE - SEVEN NCAA REGION TOURNAMENT APPEARANCES - 2015-16, 18-19 &amp; 20-21 NCAA DIV. II CHAMPIONS

WOMEN'S BASKETBALL GAME NOTES  
November 10, 2023

## LCU LADY CHAPARRALS

**Location** ..... Lubbock, Texas  
**Founded** ..... 1957  
**Enrollment** ..... 2,000  
**Affiliation** ..... NCAA Div. II  
**Conference** ..... Lone Star  
**Nickname** ..... Lady Chaparrals "Lady Chaps"  
**Athletic Director** ..... Nathan Blackwood (Interim)  
**Sports Information** ..... Chris Due  
**Head Coach** ..... Steve Gomez  
**Career Record (year)** ..... 501-144 / 21st

## 2023-24 LADY CHAPS SCHEDULE

Date	Opponent	Result
Nov. 3	vs. No. 17 Union (Tenn.) \$	L 78-87
Nov. 5	vs. Adams State \$	W 69-65
Nov. 10	at Colorado Christian ^	4:00 PM
Nov. 11	vs. Colorado State Pueblo ^	2:00 PM
Nov. 17	vs. Southwestern Okla. St.	6:00 PM
Nov. 18	vs. King (Tenn.)	7:30 PM
Nov. 25	at Southern Nazarene	1:00 PM
Nov. 30	at Oklahoma Christian	5:30 PM
Dec. 2	at Arkansas Fort Smith	1:00 PM
Dec. 10	vs. Texas A&M International	1:00 PM
Dec. 12	vs. Texas A&M Kingsville	1:00 PM
Dec. 30	vs. SW'ern Assemblies of God (Exib)	5:00 PM
Jan. 4	at Cameron	5:30 PM
Jan. 6	at Midwestern State	1:00 PM
Jan. 11	vs. Texas Permian Basin	5:30 PM
Jan. 13	vs. Angelo State	1:00 PM
Jan. 18	at Eastern New Mexico	6:30 PM
Jan. 20	at Western New Mexico	2:00 PM
Jan. 25	vs. UT Tyler	5:30 PM
Jan. 27	vs. Texas Womans	1:00 PM
Feb. 1	vs. Midwestern State	5:30 PM
Feb. 3	vs. Cameron	1:00 PM
Feb. 8	at Angelo State	5:30 PM
Feb. 10	at Texas Permian Basin	1:00 PM
Feb. 15	vs. Western New Mexico	5:30 PM
Feb. 17	vs. Eastern New Mexico	1:00 PM
Feb. 22	at St. Edward's	5:30 PM
Feb. 24	at St. Mary's	1:00 PM
Feb. 29	vs. West Texas A&M	5:30 PM
Mar. 2	at West Texas A&M	1:00 PM

\* - Lone Star Conference Game Times are Central

\$ - D2CCA Tip-Off Classic (Lubbock, Texas)  
^ - RMAC/LSC Tip-Off Classic (Lakewood, Colo.)

+ - Lone Star Conference Championships (Frisco, Texas)



FACEBOOK/LCUCAPS  
 TWITTER: @LCUCaps  
 INSTAGRAM: @LCUCaps  
 YOUTUBE: #LCUathletics



## AT COLORADO CHRISTIAN

Fri. Nov. 10 - 4 PM (CT)

RMAC/LSC TIP-OFF CLASSIC &gt;&gt; CCU EVENTS CENTER (LAKEWOOD, COLO.)

LIVE SCORING: <http://www.sidearmstats.com/ccu/wball/> RADIO: NONE  
 WATCH ONLINE: <https://www.rmactnetwork.com/coloradochristian> LISTEN ONLINE: N/A  
 CCU RECORD: 0-0, 0-0 (RMAC) ALL-TIME SERIES: LCU LEADS 2-1  
 CCU HOME 0-0, ROAD 0-0, NEUTRAL 0-0 LAST MEETING: 11/11/22 vs. CCU (W 85-64)  
 RANKINGS: N/A LAST WIN BY LCU: 11/11/22  
 LAST WIN BY CCU: 12/4/93

GAME  
3

## vs COLORADO STATE PUEBLO

Sat. Nov. 11 - 2 PM (CT)

RMAC/LSC TIP-OFF CLASSIC &gt;&gt; CCU EVENTS CENTER (LAKEWOOD, COLO.)

LIVE SCORING: <http://www.sidearmstats.com/ccu/wball/> RADIO: NONE  
 WATCH ONLINE: <https://www.rmactnetwork.com/coloradochristian> LISTEN ONLINE: N/A  
 CSUP RECORD: 0-2, 0-0 (RMAC) ALL-TIME SERIES: LCU LEADS 8-5  
 CSUP HOME 0-0, ROAD 0-0, NEUTRAL 0-2 LAST MEETING: 11/12/22 vs. CSUP (W 76-58)  
 RANKINGS: N/A LAST WIN BY LCU: 11/12/22  
 LAST WIN BY CSUP: 11/13/21

GAME  
4

## LOOKING FOR A ROCKY MOUNTAIN HIGH

Lubbock Christian University hits the road for the first time this season, as they head to Lakewood, Colo. For the RMAC / Lone Star Conference Tip-Off Classic inside CCU Events Center on the campus of Colorado Christian. LCU opens their Colorado stay Friday against host Colorado Christian (4 p.m. CT) before wrapping up the weekend Saturday (2 p.m. CT) against Colorado State Pueblo for their first neutral site contest of the season.

## ALL-TOURNEY TEAM NODS

Grace Foster led LCU in scoring on the week with a pace of 22.0 points per game, which also led all players at the D2CCA TipOff Classic LCU hosted last weekend. Following a 16-point season-debut against Union, she carried LCU to a victory over Adams State with a 28-point performance for her 15th career performance of at least 20 points. In the contest against ASU, the Childress, Texas native was 13-of-13 from the free-throw line to set the Rip Griffin Center record for best free-throw shooting

percentage in a single game. Foster's 13 made free-throws were the most in a game since Nicole Hampton had 15 on Jan. 14, 2016 (third-most since 2008) and the 13 free-throws made also set a Rip Griffin Center record (most free-throws made in single game). Foster's 13-of-13 mark was one off Hampton's 14-of-14 school-record performance on Jan. 14, 2016 (at Newman). The performance at the line for the junior forward marked her fifth game in which she was perfect from the line with six-or-more consecutive shots made. She also averaged 7.5 rebounds and 3.5 assists per game in LCU's two contests.

## SEASON NOTES AND TRENDS

> Against Union, Grace Foster missed three free-throws for just the second time in her LCU career. She redeemed herself Sunday against Adams State by going 13-of-13 from the free-throw line. Foster's 13 made free-throws were the most in a game since Nicole Hampton had 15 on Jan. 14, 2016 (third-most since 2008) and set a Rip

LUBBOCK CHRISTIAN (@LCUCHAPS)  
LADY CHAPARRALS

Record: 1-1, 0-0 Lone Star  
 Last Game: 69-65 W vs. Adams St.  
 Coach: Steve Gomez  
 Gomez vs. CCU: 3-0  
 Gomez vs. CSUP: 6-3

## PROJECTED STARTERS

Pos.	Player	Class	Pts/p	Reb/p
G	Audrey Robertson	Sr.	9.0	2.5
G	Shaylee Stovall	Sr.	9.0	1.0
G	Macci Maddox	Sr.	15.0	4.0
F	Grace Foster	Jr.	22.0	7.5
F	Martie McCoy	So.	4.5	4.0

## LCU LEADERS

AVG. POINTS  
 22.0 Grace Foster

## REBOUNDS

7.5 (15) Grace Foster

## ASSISTS

4.0 (8) Macci Maddox

## STEALS

2.0 (4) M. Maddox / A. Robertson

COLORADO CHRISTIAN (@CCUCOUGARS)  
COUGARS

Record: 0-0 0-0, 0-0 RMAC  
 Last Game: N/A  
 Coach: Daine Thompson  
 Career Record: 19-36  
 CCU Record: 19-36

## PROJECTED STARTERS

Pos.	Player	Class	Pts/p	Reb/p
-	-	-	-	-
-	-	-	-	-
-	-	-	-	-
-	-	-	-	-
-	-	-	-	-

## CCU LEADERS

AVG. POINTS  
 -- --

## REBOUNDS

-- --

## ASSISTS

-- --

## STEALS

-- --

CSU PUEBLO (@GoTHUNDERWOLVES)  
THUNDERWOLVES

Record: 0-2, 0-0 RMAC  
 Last Game: vs. Union L 108-70  
 Coach: Tommie Johnson  
 Career Record: 48-56  
 UTT Record: 48-56

## PROJECTED STARTERS

Pos.	Player	Class	Pts/p	Reb/p
G	Tomia Johnson	Jr.	7.5	1.0
G	Romola Dominguez	Gr.	6.0	3.0
G	Landri Hudson	Jr.	8.0	1.0
FW	Alisha Davis-Little	R-Jr.	16.0	9.0
FW	Autumn Watts	R-Jr.	6.5	3.0

## CSUP LEADERS

AVG. POINTS  
 16.0 Alisha Davis-Little

## REBOUNDS

9.0 (18) Alisha Davis-Little

## ASSISTS

3.5 (7) Tomia Johnson

## STEALS

2.5 (5) Tomia Johnson

## LUBBOCK CHRISTIAN UNIVERSITY WOMEN'S BASKETBALL GAME NOTES

Griffin Center record. Foster's 13-of-13 mark was one off Hampton's 14-of-14 school-record performance on Jan. 14, 2016 (at Newman), but it did mark a new Rip Griffin Center record previously held by Laynee Burr, who was 12-of-12 on Feb. 4, 2022 (against Midwestern State). The performance at the line for Foster marked her fifth game in which she was perfect from the line with six-or-more consecutive shots made. The 13-of-13 from the line has Foster 15-of-18 on the season (.833), which is second on the squad (of qualifiers) behind Shaylee Stovall, who is 11-of-12 (91.7%).

>The Lady Chaps have two players in the top 10 in LSC scoring so far through the opening weekend of play. Foster is averaging 22.0 points per game, which has her second in the LSC behind Texas Woman's Ashley Ingram (22.3). Maci Maddox is ranking sixth in the LSC with 15.0 points per game. The two, who are tops in the LSC in minutes played per game (Maddox 39.5, Foster 39.0) also rank in the top-10 in LSC shooting accuracy, as Maddox is third in the LSC (.636) and Foster is seventh (.500), and in assists, with Maddox ranking fifth (4.0 per game) and Foster sixth (3.5 per game). Maddox is fifth in the LSC with an assist/turnover ratio of 1.3.

>Foster is averaging 7.5 rebounds per game (sixth in the LSC), but leads the LSC averaging 7.0 defensive rebounds per game. She led the LSC last season with a pace of 7.5 defensive rebounds per game.

>Martie McCoy and Foster are co-leading LCU with 1.0 blocks per game and the mark has them tied for fifth in the LSC.

> LCU finish 22-of-23 (95.7%) from the free-throw line Sunday against ASU. The mark was the seventh-best since 2008 and the best since Lander was 30-of-31 on November 19, 2021.

> LCU was out-shot from the field Sunday, as Adams State had a 43.1% to 41.7% shooting advantage over LCU. The Lady Chaps went 1-8 last season when their opponents had a higher shooting percentage from the field in a game.

### NEW FACE

LCU has four new additions on the roster this season (all are freshmen) and the only one that has made their LCU debut, through the opening weekend, has been Kennedy Chappell. In two games, Chappell is averaging 5.0 points per game and has earned her way to the charity stripe, where she is 6-of-7 on the season.

### NATIONALLY KNOWN (OR UNKNOWN)

Despite returning five starters from a regional-finalist squad, which also shared a divisional title, LCU has not garnered the attention of voters. This season, LCU is receiving Top-25 votes in the WBCA Preseason Poll, but it is their first time they are not in the Top-25 for a WBCA preseason poll since the start of the 2017-18 season (second time not in a WBCA Preseason Poll since becoming eligible for the poll in 2015-16... WBCA did not conduct a preseason poll in 2020-21 due to COVID). Also, since joining NCAA Division II (2015-16 was their first postseason eligible season), the Lady Chaps have appeared in every D2SIDA Preseason Poll until this season, as they are also receiving votes in the D2SIDA Top-25 Preseason Poll.

### SO ARE SOME OTHERS

LCU fell to No.17 Union (Tenn.) Friday, placing them with a 0-1 record this season against nationally ranked programs. LCU went 6-0 against nationally ranked programs in 2020-21, 3-2 in 2021-22 (opened 3-0) and 2-5 last season against

Top-25 competition.

### PLANES, TRAINS AND AUTOMOBILES

LCU plays both a road game (against CCU) and a neutral site game (vs. CSUP) this weekend in Lakewood. Last season, LCU went 8-4 in true road games and 4-5 in neutral site games. It was LCU first season since 2014-15 in which they had a losing record in neutral site contests.

### SWEET HOME (ON) CHICAGO

The Lady Chaps, who went 12-2 at home last season, are 1-1 this season at home. On Feb. 2, 2023, the NCAA Division II record home win streak came to a close, as LCU fell to Angelo State, which ended the record win streak at 113. The loss was LCU's first at home since Jan. 1, 2015 against Oklahoma City University. LCU, who also had a 7-0 mark in NCAA postseason play in Lubbock in the mix (not including a 4-0 mark in LSC postseason play), had also won 88 consecutive home conference games (their last conference home loss occurred Jan. 10, 2013 against Oklahoma City). They completed a 49-0 all-time mark in Heartland Conference home games (they are 35-1 in LSC home games). LCU also went 11-0 during their 113-game home win streak against nationally ranked programs.

### NCAA DIVISION II'S LONGEST HOME WIN STREAKS

113 - Lubbock Christian Jan. 1, 2015 - Feb. 2, 2023  
87 - Neb. Kearney Jan. 31, 1995-Nov. 24, 2001  
85 - West Tex. A&M Jan. 9, 1987-Dec. 6, 1991

### EYE-OPENING

The 2023-24 season marks LCU's 11th since leaving the NAIA and LCU is 267-47 record (85.0%) in that span. In NCAA postseason play, the Lady Chaps are 24-3 all-time (88.9%).

### FIVE THINGS ABOUT CCU

1 > The Cougars are coming off a 10-18 record from last season, and they finished 11th in the Rocky Mountain Athletic Conference with a 6-16 conference mark.

2 > CCU opens their season against LCU for a third consecutive season and for the second time at home. LCU is 2-0 in those prior two encounters.

3 > The Cougs are picked to finish 10th in the RMAC, as they took the 10-spot in the RMAC Preseason Poll.

4 > Returning for the Cougars this season is Maggie Phipps and Senior Regan LoConte, who combined for 81 three-pointers last season.

5 > Head coach Diane Thompson begins her third season as the head coach of the Cougars. She made her Cougar coaching debut against LCU (start of 2021-22 season).

### THE SERIES AGAINST CCU

LCU and Colorado Christian have met three prior times (LCU leads the series 2-1), meeting the prior two CCU season openers (LCU won both) to mark the first meeting between the two squads since an invitational hosted by Colorado Christian on Dec. 3-4, 1993. The Dec. 4, 1993 meeting marked the first meeting, with Colorado Christian winning 72-55. LCU is 1-1 all-time in Lakewood against CCU after claiming a 60-46 win on Nov. 12, 2021 inside CCU Events Center.

### ACTIVE LADY CHAP LEADERS VS. CCU

Here is a look at LCU's top three active leaders career vs. CCU:

Grace Foster 2 gp, 8.0 ppg, 8/8 ft, 6.0 reb p/g  
Audrey Robertson 2gp, 7.5 ppg, 2.5 steals p/g  
Maci Maddox 2 gp, 7.0 ppg, 2/2 3fg, 2.5 a p/g

### PRIOR MEETING VS. CCU

LUBBOCK, Texas (November 11, 2022) - No.13 Lubbock Christian University received a career-high 14 points from Maci Maddox and the Lady Chaparrals overcame a hot start by Colorado Christian to defeat the Cougars 85-64 in LCU's home opener and their opening game of the Carpet Tech Classic inside Rip Griffin Center.

Colorado Christian opened the game on a 7-0 run, with five of the points from Regan Laconte, as LCU made one of the first five field goal attempts in their opening three minutes of the game. CCU's Laconte and Maggie Hutka each had a pair of field goals during a stretch in which the Cougars made six consecutive field goals and took a 14-5 lead midway through the opening quarter. LCU found an offensive spark with a three-pointer by Rachel Haase, which ignited a 8-0 run (included a pair of Haase three-pointers) and was part of a 12-2 LCU run. Rachel Schumann had the last four points of the run and it gave LCU a 17-16 lead with 3:49 in the quarter. Hutka (7 points) and Laconte (5 points) combined for 12 points in the quarter for CCU, and LCU's Haase and Schumann (six points each) combined for 12 points for LCU in the quarter, as each team's pair helped

## LADY CHAPS HISTORY

NCAA NATIONAL CHAMPIONSHIPS  
2016 2019 2021

NCAA TOURNAMENT APPEARANCES  
2016 2018 2019 2020 2021 2022 2023

NCAA DIV. II SOUTH CENTRAL REGION  
TOURNAMENT CHAMPIONS  
2016 2018 2019 2021

LONE STAR CONFERENCE  
CHAMPIONS  
2020,2021 (Won Tournament) 2021 (Regular Season)

LONE STAR CONFERENCE  
DIVISION CHAMPIONS  
2021 (West), 2023 (West)

HEARTLAND CONFERENCE  
2013/2014 First Place  
2014/2015 Regular Season Champions  
2015/2016 Regular Season Champions  
2017/2018 Regular Season Champions  
2018/2019 Regular Season Champions

HEARTLAND CONFERENCE  
TOURNAMENT CHAMPIONS  
2016 2018 2019

SAC CONFERENCE CHAMPIONS  
2006/2007  
2011/2012

SAC TOURNAMENT CHAMPIONS  
2013

NAIA NATIONAL QUALIFIERS  
2004 2009  
2005 2010  
2006 2011  
2007 2012  
2008 2013

NAIA SWEET SIXTEEN FINISH  
2007  
2009

NAIA ELITE EIGHT FINISH  
2008  
2011  
2013

NAIA FAB FOUR SEMIFINALISTS  
2012

NAIA NATIONAL FINALIST  
2006

send the game to the second quarter tied 20-20.

LCU started to pull away in the second quarter and they did it from the free-throw line. LCU had a 13-0 run in which the first five points were from the free-throw line. Four of the free-throws were from Audrey Robertson, who also added a layup in the run, as LCU led 35-22 nearly three-minutes into the frame. LCU went 13-of-14 from the free-throw line in the quarter, with Grace Foster hitting four during a 6-0 LCU run to go up 41-26 with 3:55 left in the half. Robertson (5-of-5) and Foster (4-of-4) combined to go 9-of-9 from the stripe and helped LCU take a 47-33 into the halftime break.

The Lady Chaps had a 13-1 scoring advantage in the first half in scoring from the free-throw line. They also had a 10-5 scoring advantage in second-chance points despite CCU having a 12-5 advantage in offensive rebounds. Robertson led all scorers in the first half with 11 points, and Foster led all players in the half with 10 rebounds.

CCU came out of the second half carried by Mykaela Moore, who had nine points in the quarter and all nine were during a three-minute stretch early in the third quarter. It went unnoticed, as LCU made five of six shot attempts from the field, which was capped by a Haase three-pointer to take a 60-41 lead with 6:21 remaining. LCU received six points in the third quarter from Maddox and Taylor Thomas, with Thomas scored in succession to help LCU close the quarter on an 8-2 run for a 73-51 lead.

Whitney Cox scored the final two points of the third quarter and opened the fourth quarter with the first four points to help LCU have its largest lead at 77-

## 23-24 LADY CHAPS IN THE RANKINGS

	D2SIDA	WBCA
Preseason	RV	RV
Poll 1	-	-
Poll 2	-	-
Poll 3	-	-
Poll 4	-	-
Poll 5	-	-
Poll 6	-	-
Poll 7	-	-
Poll 8	-	-
Poll 9	-	-
Poll 10	-	-
Poll 11	-	-
Poll 12	-	-
Poll 13	-	-
Poll 14	-	-
Poll 15	-	-
Poll 16	-	-
Poll 17	-	-

51 (26-point advantage). The game went downhill from there, as LCU, shooting 53.2% (25/47) before the stretch, closed the game 1-of-12 from the field. CCU had the same woes in the quarter, as they missed eight consecutive field goal attempts. LCU went the final 6:16 of the game without a field goal and their last five points were from the free-throw line (four by Deja Johnson).

LCU finished the game 44.1% (26/59) from the field. They forced the Cougars into 23 turnovers, leading to a 28-13 scoring advantage in points off turnovers. LCU was led by Maddox, who was 2-of-2 from three-point range and 6-of-11 from the field for her career-high 14 points. Robertson (12 points), who had a +35 plus/minus, and Haase (career-high 10 points) also finished in double figures for LCU. Foster led LCU with 11 rebounds.

CCU was led by Moore, who had 11 points, and they received 11 rebounds from Agnes Paul. The Cougars out-rebounded LCU (first time LCU has been out-rebounded this season) 44-37, with a 17-8 advantage in offensive rebounds (only outscored LCU 14-10 in second-chance points).

#### FIVE THINGS ABOUT CSUP

**1 >** The ThunderWolves went 14-15 last season (11-11 in RMAC play to finish and claim a RMAC Tournament berth). This is a squad that went to a regional in 2021-22 (fell to LCU 65-57) with a 23-9 record after rebounding from a 3-13 season in 2020-21 (all were conference games).

**2 >** CSUP was in Lubbock last week, where they fell to No.12 Azusa Pacific (66-53) and No.16 Union (Tenn.) (108-70). The marks have them entering Friday's contest against No.7 UT Tyler with a 0-2 record. Playing LCU Saturday, CSU Pueblo will enter that contest with all three prior games against nationally ranked opponents.

**3 >** The T-Wolves are picked to finish third in the RMAC and they have two first-place votes, as they took the third spot in the RMAC Preseason Poll.

**4 >** Having a solid tournament in Lubbock last week was Alisha Davis-Little, who averaged 16.0 points and 9.0 rebounds per game. She posted 20 points against Union.

**5 >** CSU Pueblo was plagued with turnovers last week, suffering 62 turnovers for an average of 31 per game. Union forced CSU Pueblo in 36 turnovers.

#### THE SERIES AGAINST CSUP

LCU leads the all-time series at 8-5 against CSUP (formerly known as Southern Colorado). The home team won the first five meetings, with LCU bucking that trend with a 2015-16 season-opening win in Pueblo. The two teams met twice in 2021-22 season, as LCU fell 64-56 to the ThunderWolves in Lakewood, Colo., but rebounded to defeat CSUP 66-57 on Mar. 11 in Canyon, Texas at the South Central Regional. Last season, the two teams met in Lubbock and LCU claimed a 76-58 win. The first two all-time meetings came down to the final buzzer. On Dec. 9, 1989 in Lubbock, Burgandy Bass hit the game winning shot at the horn for a 58-56 LCU win. Nearly a year later, on Dec. 8, 1989 in Pueblo, LCU rallied back from a 63-55 deficit with 24 points from Sherry Blackwell, but a three-pointer at the buzzer didn't fall and LCU lost 73-72. Six of the prior 10 meetings have been in Colorado (four in Pueblo) and under Steve Gomez's watch.

#### ACTIVE LADY CHAP LEADERS VS. CSUP

Here is a look at LCU's top three active leaders career vs. CSUP:

Grace Foster 3 gp, 11.0 ppg, 3/6 3fg, 8/8 ft, 6.0 reb p/g  
Audrey Robertson 3gp, 6.3 ppg  
Maci Maddox 3 gp, 5.7 ppg, 2/3 3fg

#### PRIOR MEETING VS. CSUP

LUBBOCK, Texas (November 12, 2022) - Grace Foster posted 16 of her 25 points in the second half and added 11 rebounds to complete a double-double to help lead No.13 Lubbock Christian University to a 76-58 win over Colorado State Pueblo in the final game of the Carpet Tech Classic inside Rip Griffin Center.

Foster, with 11 points in the third quarter, posted her second performance of over 20 points and second double-double of the season (in four games played). She had a team-leading +24 plus/minus in the contest while going 7-of-15 from the field. Foster was 3-of-5 from long range and 8-of-8 from the free-throw line.

LCU was in a fight early, just as they were in their Friday evening win over Colorado Christian. CSU Pueblo had leads of 14-12 and 16-14 in the opening quarter behind eight points in the frame by Charisse Fairley. Meanwhile, LCU was seeking to overcome a 4-of-15 (26.7%) start from the field. Foster helped spark the offense with her first field goal coming on a three-pointer with less than 30 seconds remaining in the quarter to give LCU a 17-16 lead heading into the second quarter.

The three-pointer helped start a 5-0 run, which was part of a 13-2 run to put LCU up 27-18 nearly three minutes into the second quarter. Denver City, Texas native Morgan Dial ended an 8-0 portion of the run with a three-pointer for CSU Pueblo, but Rachel Haase answered with a three-pointer, which sparked another 5-0 LCU run (put them up 32-21 with 4:42 left in the half. The ThunderWolves were held without a field goal for the final 2:45 of the half and LCU took a 40-28 lead into the break. Maci Maddox led LCU in the half with 10 points.

## GAME-BY-GAME RESULTS AND HIGHS

Opponent	Date	Score	Points	Rebounds	Assists	Steals	Blocked shots
UNION (TN)	11/03/23	78-87	16-Grace Foster Maci Maddox	7-Grace Foster	4-Martie McCoy Grace Foster Maci Maddox	3-Audrey Robertson	1-Grace Foster Martie McCoy
ADAMS ST.	11/05/23	69-65	28-Grace Foster	8-Grace Foster	4-Maci Maddox	3-Maci Maddox	1-Grace Foster Martie McCoy

Fairly, who had 13 points in the first half for CSU Pueblo, scored CSU Pueblo's first five points of the second half, but Foster had a sequence of seven straight points fit in between Fairly's two field goals to build LCU's lead to 47-30. Foster finished with 11 points in the quarter and LCU led 59-40 at the completion of the quarter.

Midway through the fourth quarter, the T'Wolves had an 8-2 run to cut LCU's lead to 70-56 with 2:30 remaining, but LCU responded with a three-pointer from Shaylee Stovall and Foster sealed the game and a perfect night at the line with a pair of makes from the charity stripe.

Along with Foster's stellar evening, the Lady Chaps received 14 points each from Maddox and Audrey Robertson. Maddox's total matched her career-high total set Friday against Colorado Christian. LCU outscored CSU Pueblo 34-20 in paint-scoring, with Foster attributing to the number. Foster also led LCU with 11 rebounds, as they out-rebounded the T'Wolves 39-27. LCU shot a season-best 51.1% (24/47) from the line (they shot 50% or better five times last season).

CSU Pueblo was held to a 34.5% (19/55) shooting performance in the game, which is the third time LCU has held an opponent to under 40-percent from the field. Fairley, a Fresno State transfer, led CSU Pueblo with 18 points.



## HEAD COACH STEVE GOMEZ

AT LCU: 20th Season (500-142)  
OVERALL: 20th Season (500-142)

### PERSONAL

HOMETOWN: Lubbock, Texas  
SPOUSE: Shawna  
CHILDREN: Hayden, Landon

### EDUCATION

Lubbock Christian / 1988

### COACHING EXPERIENCE

Lubbock Cooper High School (7 seasons)  
LCU (20th season)

### GOMEZ'S YEAR-BY-YEAR RESULTS

2003-2004	16-14	2022-2023	24-10
2004-2005	16-14		
2005-2006	23-12		
2006-2007	26-7		
2007-2008	25-10		
2008-2009	27-7		
2009-2010	19-12		
2010-2011	23-10		
2011-2012	28-6		
2012-2013	31-4		
2013-2014	25-1		
2014-2015	21-7		
2015-2016	35-0		
2016-2017	19-11		
2017-2018	31-1		
2018-2019	32-5		
2019-2020	28-3		
2020-2021	23-0		
2021-2022	28-7		

The 2023-24 season marks Steve Gomez's 21st season at the helm of the Lady Chaps and the 11th season at the NCAA level. He opens the campaign with a 500-143 record, which includes a 24-3 record in NCAA postseason play.

In his first 10 seasons at the helm, as LCU was an NAIA institution, the Lady Chaps made 10 consecutive trips to the NAIA Division I Women's Basketball National Championship Tournament. Coach Gomez's arrival to the LCU women's basketball program certainly changed the foundation of the program. In those 10 seasons, LCU posted a 234-96 record under Gomez in the NAIA.



LCU jumped into NCAA Division II transition in 2013 (membership in 2015) and the winning tradition did not change. LCU went a remarkable 25-1 overall in 2013-2014 and they completed the Heartland Conference with a perfect 20-0 mark for their first perfect conference record in program history. They followed in 2014-2015 claiming Co-Heartland Conference Regular Season title honors after a 15-3 stretch in conference and a 21-7 overall season.

That led to an astounding 2015-2016 season, which was a season that started off with an exhibition game loss at NCAA Div. I No.1 Connecticut and ended with a perfect 35-0 season in LCU's first season eligible for NCAA postseason. They went 18-0 in Heartland Conference play to capture a regular season title and then a Heartland Conference Tournament title (first season eligible for the tournament). The Lady Chaps went on to capture a South Central Regional Tournament title and eventually their first NCAA Div. II National Title. Gomez claimed WBCA NCAA Div. II National Coach of the Year honors and also spent a portion of the offseason as a court coach at the 2016 USA Basketball Women's U17 World Championship Team Trials in Colorado Springs, Colo.

2016-17 served as a rebuilding year for the Lady Chaps, who returned one starter off the championship squad. Despite the rebuilding, LCU still went 19-11 overall and 12-4 in conference, en route to the Heartland Conference Tournament championship game, which they lost to St. Edward's. They bounced back in 2017-18, claiming another Heartland Conference regular season and tournament title, leading to Gomez receiving Heartland Conference Coach of the Year honors. The Lady Chaps hosted the NCAA Division II South Central Region Tournament for a second time and won the tournament to stamp their second berth towards an NCAA Division II Elite Eight Tournament loss. They lost to eventual national champion Central Missouri at the tournament held in Sioux Falls, S.D., ending their season with a 31-2 record.

The Lady Chaps returned to the Elite Eight Tournament for the third year in a four-year span in the 2018-19 season after claiming a Heartland Conference regular season and tournament title, along with a NCAA Division II South Central Region tournament championship after wins at Colorado Mesa and at home over Angelo State. LCU made an outstanding run towards their second NCAA Division II National Title, defeating Southwestern Oklahoma State in double overtime to claim the trophy. Gomez, who picked up his third Heartland Coach of the Year honor, became the seventh head coach in NCAA Division II women's basketball history to claim multiple titles. He also was named Female Team Coach of the Year at the West Texas Sports Persons of the Year Banquet following the season.

LCU's title defense was rudely interrupted by the COVID Pandemic in 2019-20. LCU was 28-3 and claimed the Lone Star Conference Championship during their first season in the conference. LCU was chosen to host the NCAA Division II South Central Regionals for a third time, but the COVID shutdown halted the remainder of the season less than 24 hours prior to the first tournament game.

COVID went from being a wall to a hurdle in 2020-21, and one the Lady Chaps would be able to jump over. Through many cancellations and unknowns, LCU claimed a Lone Star Conference title and went to Canyon, Texas, where they claimed a NCAA Division II South Central title and a berth to another NCAA Elite Eight Tournament in Columbus, Ohio. It was there, LCU would claim their third national title, with wins over Daemen, Central Missouri and Drury to complete a 23-0 perfect season. They were the first NCAA Division II program to complete two undefeated seasons.

The Lady Chaps were preseason favorites to open the 2021-22 season. LCU surpassed a NCAA Div. II record 100 consecutive home wins during the season, which ended at the South Central Regional with LCU falling in the title game to conclude the season with a 28-7 record.

His 20th season was a memorable one, as for the first time in his coaching tenure, he had five new starters entering the season. A season that would end with a 24-11 record, a co-divisional title and as regional finalist falling in the South Central Region Championship Game in San Angelo, Texas. Lubbock Christian closed the 2021-22 season holding a 266-47 record (85.0%) since leaving the NAIA.

In their final two seasons in the NAIA (2011-2012, 2012-2013), LCU set program single-season win records in each of the seasons. The Lady Chaps went 31-4 in 2013-2014, setting a program single-season wins mark (31). The Lady Chaps won their first ever Sooner Athletic Conference Tournament title en route to their final trip to the NAIA National Championship tournament. In 2011-2012, LCU went 28-6 and made their second ever appearance in the Semifinals of the NAIA National Championship Tournament. They lost out to eventual national champions Oklahoma City to mark the second consecutive season in which they lost out to the team who would claim the title. LCU claimed their second Sooner Athletic Conference crown in program history, as they joined Oklahoma City as conference co-champions with a 21-1 record. They handed OCU their only loss of the season.

LCU went 25-10 in 2010-2011 and marched into the Elite Eight for a third time in program history. The Lady Chaps, who finished third in the Sooner Athletic Conference, lost in the NAIA National Championship to eventual national champion Azusa Pacific. LCU went 19-12 in the 2009-2010 season, which included a 13-9 finish in the Sooner Athletic Conference, and had their season come to an end in the National Tournament. The highlight of the season was an exhibition victory inside the United Spirit Arena against Texas Tech University.

In 2009-2010, the Lady Chaps finished with a solid 27-7 record and made a trip to the Sweet Sixteen of the National Tournament following a second-place Sooner Athletic Conference season. Gomez chalked up a milestone during the season, becoming the all-time women's basketball wins leader at LCU. They had a memorable 2007-2008 campaign, as the Lady Chaps made another voyage to the NAIA National Tournament. The Lady Chaps completed a 25-10 season, which included a trip to the Elite Eight in the tournament for their second best finish in program history.

In 2006-2007, Gomez led the Lady Chaps to a myriad of firsts in their near-thirty year history. Lubbock Christian never left the top-10 in the NAIA National Poll, and set a school mark for wins in a season with 26, eclipsing the school mark of 23 they set the prior season. In addition, LCU made its fourth consecutive trip to the NAIA National Tournament, finishing in the Sweet Sixteen and most impressively, the Lady Chaps captured a share of the Sooner Athletic Conference regular season championship, becoming the first school from outside of the State of Oklahoma to do so in the thirty-one years since the conference was founded. In 2005-2006, Gomez's Lady Chaps enjoyed what was arguably at the time the best season in school history, as they finished with an overall record of 23-12, and made an unparalleled run at the NAIA National Tournament. Seeded sixth in their eight team bracket in the tournament, Gomez's girls proceeded to oust four of the top six teams in the nation and become the lowest seed ever to reach either the Fab Four or National Championship; appropriately enough, he was named the SAC's Coach of the Year.

Gomez's Lady Chaps went 16-14 in his first season and finished fifth in the Sooner Athletic Conference. While this might appear to be an average year, big wins for the Lady Chaps and entry into the NAIA National Poll for the first time proved good enough for an at-large bid to the NAIA National Tournament: LCU women's first trip to the big dance. In his second season, the Lady Chaps were able to maintain that level of success. After getting off to the best conference start since joining the Sooner Athletic Conference at 6-2, LCU finished SAC play at 10-8, good enough for another fifth place finish, and for the second season in a row, Coach Gomez guided the Lady Chaps to the NAIA National Tournament.

An LCU graduate, Gomez was a standout perimeter player for Coach John Copeland in the late 1980s, and to this day, he still holds the school record for career free throw percentage at .855. He graduated in 1988 with a Bachelor's of Science Degree in Mathematics and consistently used his degree to teach in the classroom while pursuing coaching on the sidelines. Gomez's career began at Lubbock Monterey High School where he served as an assistant coach in the men's basketball program from 1988 to 1995. In 1996, Gomez accepted the men's basketball head coaching position at Lubbock Cooper High School, where he remained until returning to Lubbock Christian University to take over the reigns of the Lady Chaps in 2003. During his seven seasons at Cooper, the basketball program broke new ground making the playoffs four times, managing the school's first state ranking, and capturing the Pirates only district championship in Gomez's final season. One of the main reasons Coach Gomez is so successful on the court is the support he receives off of it. Steve has been married to his wife Shawna for 32 years, and the couple has two sons: Hayden and Landon. Landon serves on the women's basketball coaching staff at LCU.





## LONE STAR CONFERENCE

## LSC WEEKEND SCHEDULE

## Friday, Nov. 10

UCCS at Midwestern State  
 St. Edward's vs. Regis (Golden, Colo.)  
 St. Mary's at Colorado School of Mines  
 Western New Mexico vs New Mexico Highlands (Portales, N.M.)  
 UT Tyler vs CSU Pueblo (Lakewood, Colo.)  
 UT Permian Basin vs. South Dakota Mines (Grand Junction, Colo.)  
 Fort Lewis at Eastern New Mexico  
 Lubbock Christian at Colorado Christian  
 Angelo State vs. MSU Denver (Denton, Texas)  
 West Texas A&M at Colorado Mesa  
 Adams State at Cameron  
 Western Colorado at Texas Woman's  
 Westminster (Utah) at UAFS

## Saturday, Nov. 11

St. Mary's at Regis (Golden, Colo.)  
 St. Edward's at Colorado School of Mines  
 Western New Mexico vs Fort Lewis (Portales, N.M.)  
 Angelo State vs. Western Colorado (Denton, Texas)  
 Lubbock Christian vs. CSU Pueblo (Lakewood, Colo.)  
 New Mexico Highlands at Eastern New Mexico  
 MSU Denver at Texas Woman's  
 UT Tyler at Colorado Christian  
 West Texas A&M vs South Dakota Mines (Grand Junction, Colo.)  
 UCCS at Cameron  
 Westminster (Utah) at UAFS  
 Adams State at Midwestern State  
 UT Permian Basin at Colorado Mesa

## LSC PLAYERS OF THE WEEK

Date	Offensive	Defensive
11/7	Ashley Ingram (TWU)	Ngozi Obineke (TAMU)

## PRESEASON POLL

School	1st	Total Points
1 Angelo State (15)	652	15
2 Texas Woman's (17)	633	17
3 UT Tyler (9)	627	9
4 Lubbock Christian (3)	606	3
5 West Texas A&M	524	
6 Texas A&M-Kingsville	492	
7 St. Edward's	379	
8 Cameron	311	
9 Oklahoma Christian	270	
UT Permian Basin	270	
11 Eastern New Mexico	248	
12 Western New Mexico	233	
13 Texas A&M International	225	
14 UAFS	202	
15 Midwestern State	172	
16 St. Mary's	140	



## KAYCIE WILSON - ASSISTANT COACH

Kaycie joined the LCU women's basketball coaching staff in the 2014-15 season as a graduate assistant through the 2015-16 season. She has played an integral role in the coaching staff for all three NCAA national championships. Wilson was named to the Dave Campbell's Texas Basketball Top-40 Coaches Under-40 List in 2021. She spent her senior season (2013-14) playing in the interior of LCU's first season in the Heartland Conference, which went 20-0 in conference for a regular season first place finish. She spent three seasons (09/10 - 11/12) at NCAA Div. I Missouri-Kansas City, where she combined to average 4.9 points and 3.9 rebounds in 87 games. The forward also combined for 44 steals, 95 assists and 34 blocks for UMKC (21 blocks as a sophomore). Boyles was a multiple recipient on The Summit League Winter/Spring Academic All-League Team and the Commissioner's List of Academic Excellence as a distinguished scholar. She is a Lubbock native and a product of Coronado High School, where she was rated the No.45 best forward in the nation by Collegiate Girls Basketball Report and the No.55 best player in Texas by Premier Basketball Report. The multi-winning All-State recipient was named the Girls Basketball Player of the Year by the Lubbock Avalanche Journal, as well as the 2009 5A-4A All-South Plains Player of the Year after 17.6 points and 7.9 rebounds a game.



## LANDON GOMEZ - ASSISTANT COACH

Landon, the son of Steve Gomez (women's basketball head coach) joined the Lady Chaparrals in his current role prior to the 2023-24 season. While earning a Bachelor's degree in Exercise Sports Science (ESS) at LCU (2017-2021), Landon spent three seasons as a student-assistant coach with the Lady Chaparrals. Landon was part of the 2019 and 2021 NCAA Division II national championship squads. He went on to complete a Masters of Science (degree) in Sport Management at Texas Tech, where he served as a graduate-assistant coach for the Lady Raiders basketball program. At Tech, Landon was on staff from 2021-23 and assisted in scouting reports and oversaw the scout/practice teams. The Lady Raiders made their first post-season appearance (WNIT) since the 2012-13 season and made a berth to the Super Sixteen (round).

## Women's Basketball Support Staff



Volunteer Assistant Coach  
**Julio Pacheco**



Sports Information Contact  
**Chris Due**



Assistant Athletic Trainer  
**Courtney Burgess ATC/L**



Student Trainer  
**Amberlee Aduddell**



Student Assistant  
**Whitney Cox**



Student Assistant  
**Cara Paschall**



Student Assistant  
**Bri Pruitt**

## 2023-24 LONE STAR CONFERENCE STANDINGS

School	Div	DPct.	Conf	CPct.	Overall	Pct.	Streak
East Division							
Oklahoma Christian	0-0	.000	0-0	.000	1-0	1.000	W1
Texas A&M International	0-0	.000	0-0	.000	3-0	1.000	W3
Texas Woman's	0-0	.000	0-0	.000	3-0	1.000	W3
UT Tyler	0-0	.000	0-0	.000	2-1	.667	L1
St. Edward's	0-0	.000	0-0	.000	0-0	.000	
St. Mary's	0-0	.000	0-0	.000	0-0	.000	
Texas A&M-Kingsville	0-0	.000	0-0	.000	0-3	.000	L3
UAFS	0-0	.000	0-0	.000	0-0	.000	
West Division							
Lubbock Christian	0-0	.000	0-0	.000	1-1	.500	W1
West Texas A&M	0-0	.000	0-0	.000	1-1	.500	W1
Angelo State	0-0	.000	0-0	.000	1-2	.333	W1
Cameron	0-0	.000	0-0	.000	0-0	.000	
Eastern New Mexico	0-0	.000	0-0	.000	0-0	.000	
Midwestern State	0-0	.000	0-0	.000	0-0	.000	
UT Permian Basin	0-0	.000	0-0	.000	0-0	.000	
Western New Mexico	0-0	.000	0-0	.000	0-0	.000	

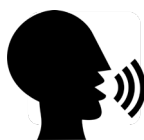
## 2023-2024 LCU ROSTER

No.	Name	Pos.	Ht.	Cl.	Yrs.Left	Hometown School	High School
0	Grace Foster	FW	6-1	Jr.	2	Childress, Texas	Childress H.S.
1	Kennedy Chappell	G	5-9	Fr.	4	Heath, Texas	Dallas Christian H.S.
2	Maci Maddox	G	5-7	Sr.	1	Lubbock, Texas	Frenship HS
3	Audrey Robertson	G	5-8	Sr.	1	Kerrville, Texas	Tivy HS
4	Kimber Mathews	G	5-9	Fr.	4	Gruver, Texas	Gruver H.S.
11	Taylor Allen	G	5-9	Fr.	4	Roscoe, Texas	Highland H.S.
12	Taylor Thomas	G	5-9	So.	3	Canyon, Texas	Canyon H.S.
15	Shaylee Stovall	G	5-6	Sr.	1	Idalou, Texas	Idalou HS
22	Rylee Verduin	FW	6-2	Fr.	4	Wylie, Texas	Homeschool
23	Martie McCoy	FW/G	5-11	So.	3	Muenster, Texas	Muenster H.S.
30	Audrey Spurgin	P	6-2	Jr.	2	Fredericksburg, Texas	Fredericksburg H.S.
31	Tia Johnson	FW/G	5-9	So.	3	Lubbock, Texas	Brownfield H.S.
33	Deja Johnson	FW/G	5-9	So.	3	Lubbock, Texas	Brownfield H.S.
40	Reese Schumann	P	6-1	Jr.	2	Houston, Texas	Clear Lake H.S.

Head Coach: Steve Gomez

Assistant Coaches: Kaycie Wilson, Landon Gomez,

Julio Pacheco (Vol. Asst.)



## PRONUNCIATIONS

CHAPPELL: chap-el (like a church service)  
 STOVALL: stow-VAHL  
 VERDUIN: ver-DUE-in  
 DEJA (Johnson): DAYja  
 SPURGIN: spurJEN  
 SCHUMANN: shewman

## GEO PRONUNCIATIONS

Gruver: GREW-ver  
 Idalou: EYE-d'LEW  
 Kerrville: K'RRville  
 Lubbock: Luhbuck  
 Muenster: MUHNster  
 Tivy: TY-vee

CHAPS: shhapps (not CH-apps)

## NCAA DIVISION II POLLS



## WBCA DIV.II TOP 25 (Preseason)

Rank	School	Pts	1st.	1st
1	Ashland (37-0)	575	1	23
2	Minnesota State Mankato (26-5)	468	11	0
3	Grand Valley State (31-3)	457	7	0
4	Catawba (29-6)	450	6	0
5	Tampa (33-2)	419	4	0
6	Assumption (27-6)	398	10	0
7	Texas-Tyler (27-8)	380	14	0
8	Minnesota Duluth (32-4)	368	2	0
9	Eckerd (26-6)	360	9	0
10	Central Missouri (25-5)	355	17	0
11	Cal State Dominguez Hills (31-3)	343	5	0
12	Azusa Pacific (26-5)	312	13	0
13	West Chester (24-9)	298	RV	0
14	Wingate (23-8)	194	NR	0
15	Montana State Billings (25-8)	192	RV	0
16	West Virginia State (22-7)	178	NR	0
17	Union, TN (27-4)	173	12	0
18	Bentley (22-10)	150	RV	0
19	Angelo State (26-7)	147	25	0
20	Ferris State (17-12)	127	NR	0
21	Lee, TN (26-7)	120	RV	0
22	Cal State San Marcos (25-6)	108	15	0
23	Glenville State (33-3)	84	3	0
24	Texas Woman's (26-6)	81	23	0
25	Missouri Western State (24-7)	79	NR	0

**Receiving Votes:** Drury (31-2) 78; North Georgia (19-11) 71; Western Washington (24-4) 54; Thomas Jefferson (28-5) 44; Missouri Southern State (29-7) 41; Southern New Hampshire (22-8) 39; Gannon (29-5) 38; Regis, CO (25-7) 34; California, PA (21-11) 30; Columbus State (15-12) 26; Lewis (21-11) 24; Elizabeth City State (15-12) 20; Harding (25-7) 19; Tuskegee (26-4) 18; Cal State LA (20-10) 15; Valdosta State (22-7) 10; Lincoln, PA (19-9) 6; Lubbock Christian (24-11) 5; St. Thomas Aquinas (21-9) 5.



## D2SIDA DIV.II TOP 25 (Preseason)

Rank	School	Rec	Pts	Prev.
1	Ashland (16)	37-0	400	
2	Minnesota State Mankato	26-5	360	
3	Tampa	33-2	353	
4	Catawba	20-4	344	
5	Grand Valley State	31-3	339	
6	Minnesota Duluth	32-4	309	
7	Assumption	27-6	305	
8	Angelo State	26-7	279	
9	Texas Tyler	27-8	278	
10	Eckerd	26-6	235	
11	Central Missouri	25-5	233	
12	Montana State Billings	25-8	220	
13	West Chester	24-9	211	
14	Azusa Pacific	26-5	167	
15	Jefferson	28-5	156	
16	West Virginia State	22-7	138	
17	Union	27-4	135	
18	Texas Women's	26-6	116	
19	North Georgia	18-6	113	
20	Bentley	22-10	77	
21	Western Washington	24-4	75	
22	Lee	25-7	70	
23	Lewis	21-11	61	
24	Wingate	19-4	46	
25	Gannon	29-5	44	

**RV:** Drury (33); Southern Nazarene (23); Regis (16); Cal State - Dominguez Hills (14); Glenville State (12); Cal State - Los Angeles (11); California - Pa. (10); Lubbock Christian (5); Southern New Hampshire (5); Cal State - San Marcos (3); Valdosta State (3); Trevecca Nazarene (1)



## NCAA SOUTH CENTRAL REGIONAL RANKINGS

Schools vs. D2 rec. In-Region



## D2SIDA SOUTH CENTRAL REGION POLL

Rank	School (First-Place Votes)	W-L	Pts.	Prev.
T-1	Angelo State (3)	0-0	53	--
1	Texas Tyler (3)	0-0	53	--
2	Texas Woman's	0-0	47	--
3	Regis	0-0	43	--
4	Lubbock Christian	0-0	41	--
5	Colorado Mines	0-0	28	--
6	West Texas A&M	0-0	17	--
7	Texas A&M - Kingsville	0-0	16	--
8	Colorado State Pueblo	0-0	15	--
9	Black Hills State	0-0	8	--

## WEBSITE &amp; BROADCAST PARTNERS

## ON THE NET - WWW.LCUCHAPS.COM

The official website of LCU Athletics is where you can find everything relating to the LCU basketball teams. Schedules, results, rosters, bios, statistics and game notes can be found there.

## ON THE AIR

Each game will be broadcast on the LSC Digital Network as an option for fans unable to attend. The LSC Digital Network will offer season passes for basketball, giving fans access to all regular-season contests on the network for that sport. In addition, viewers will continue to have the option to purchase a \$10 day pass that provides access to all broadcasts aired that day and access to all archived content for 24 hours.

## 2022-23 LSC Digital Network Rates

24-Hour Day Pass:	\$10.00
Men's and Women's Basketball Season Pass:	\$75.00
Archive Download:	\$10 per broadcast

The LSC Digital Network enters its fourth season in 2022-23, showcasing academic and athletic events from the league, its 17 member institutions and three football affiliates in partnership with BlueFrame powered by Hudl. Fans can watch broadcasts and purchase passes online at [www.lonestarconferencenetwork.com](http://www.lonestarconferencenetwork.com) on computer and mobile devices. Viewers can also tune in to games on the LSC Digital Network via OTT apps available on Apple TV, Amazon Fire TV, Android TV and Roku by searching for "LSC Digital Network."



DIGITAL NETWORK





## 2023-24 STATISTICS

RECORD:	OVERALL	HOME	AWAY	NEUTRAL
ALL GAMES	1-1	1-1	0-0	0-0
CONFERENCE	0-0	0-0	0-0	0-0
NON-CONFERENCE	1-1	1-1	0-0	0-0

##	Player	gp-gs	min	avg	Total		3-Point		F-Throw		Rebounds				pf	dq	a	to	blk	stl	pts	avg
					fg-fga	fg%	3fg-fga	3fg%	ft-fa	ft%	off	def	tot	avg								
00	Grace Foster	2-2	70	35.0	13-26	.500	3-8	.375	15-18	.833	1	14	15	7.5	4	0	7	11	2	0	44	22.0
01	Kennedy Chappell	2-0	30	15.0	2-6	.333	0-2	.000	6-7	.857	1	1	2	1.0	3	0	2	0	0	0	10	5.0
02	Maci Maddox	2-2	79	39.5	14-22	.636	2-3	.667	0-0	.000	0	8	8	4.0	5	0	8	6	0	4	30	15.0
03	Audrey Robertson	2-1	60	30.0	7-19	.368	1-3	.333	3-4	.750	1	4	5	2.5	5	0	3	4	0	4	18	9.0
12	Taylor Thomas	2-1	35	17.5	4-7	.571	2-2	1.000	2-2	1.000	1	5	6	3.0	6	1	1	2	0	2	12	6.0
15	Shaylee Stovall	2-2	50	25.0	3-9	.333	1-4	.250	11-12	.917	2	0	2	1.0	2	0	5	2	0	2	18	9.0
23	Martie McCoy	2-2	56	28.0	4-10	.400	0-3	.000	1-2	.500	1	7	8	4.0	7	0	5	1	2	2	9	4.5
30	Audrey Spurgin	2-0	12	6.0	1-3	.333	0-0	.000	2-4	.500	3	1	4	2.0	4	0	0	3	0	0	4	2.0
40	Reese Schumann	2-0	8	4.0	0-0	.000	0-0	.000	2-2	1.000	0	0	0	0.0	1	0	0	0	0	0	2	1.0
Team											1	3	4					2				
Total.....		2	400		48-102	.471	9-25	.360	42-51	.824	11	43	54	27.0	37	1	31	31	4	14	147	73.5
Opponents.....		2	400		50-108	.463	20-42	.476	32-39	.821	19	46	65	32.5	50	0	27	38	6	12	152	76.0

## TEAM STATISTICS

	LCU	OPP
SCORING	147	152
Points per game	73.5	76.0
Scoring margin	-2.5	-
FIELD GOALS-ATT	48-102	50-108
Field goal pct	.471	.463
3 POINT FG-ATT	9-25	20-42
3-point FG pct	.360	.476
3-pt FG made per game	4.5	10.0
FREE THROWS-ATT	42-51	32-39
Free throw pct	.824	.821
F-Throws made per game	21.0	16.0
REBOUNDS	54	65
Rebounds per game	27.0	32.5
Rebounding margin	-5.5	-
ASSISTS	31	27
Assists per game	15.5	13.5
TURNOVERS	31	38
Turnovers per game	15.5	19.0
Turnover margin	+3.5	-
Assist/turnover ratio	1.0	0.7
STEALS	14	12
Steals per game	7.0	6.0
BLOCKS	4	6
Blocks per game	2.0	3.0
ATTENDANCE	634	0
Home games-Avg/Game	2-317	0-0
Neutral site-Avg/Game	-	0-0

Date	Opponent	Score	Att.
11/03/23	UNION (TN)	L 78-87	347
11/05/23	ADAMS ST.	w 69-65	287

\* - Conference game

Score by Periods	1st	2nd	3rd	4th	Totals
Lubbock Christian	36	39	32	40	147
Opponents	46	29	44	33	152



## CONFERENCE STATISTICS

## HOME STATISTICS

#	Player	gp-gs	min	avg	Total		3-Point		F-Throw		Rebounds				a	to	blk	stl	pts	avg		
					fg-gs	fg%	3fg-gs	3fg%	ft-fta	ft%	off	def	tot	avg							pf	dq
00	Grace Foster	2-2	70	35.0	13-26	.500	3-8	.375	15-18	.833	1	14	15	7.5	4	0	7	11	2	44	22.0	
01	Kennedy Chappell	2-0	30	15.0	2-6	.333	0-2	.000	6-7	.857	1	1	2	1.0	3	0	2	0	0	10	5.0	
02	Maci Maddox	2-2	79	39.5	14-22	.636	2-3	.667	0-0	.000	0	8	8	4.0	5	0	8	6	0	4	30	15.0
03	Audrey Robertson	2-1	60	30.0	7-19	.368	1-3	.333	3-4	.750	1	4	5	2.5	5	0	3	4	0	4	18	9.0
12	Taylor Thomas	2-1	35	17.5	4-7	.571	2-2	1.000	2-2	1.000	1	5	6	3.0	6	1	1	2	0	2	12	6.0
15	Shaylee Stovall	2-2	50	25.0	3-9	.333	1-4	.250	11-12	.917	2	0	2	1.0	2	0	5	2	0	2	18	9.0
23	Martie McCoy	2-2	56	28.0	4-10	.400	0-3	.000	1-2	.500	1	7	8	4.0	7	0	5	1	2	2	9	4.5
30	Audrey Spurgin	2-0	12	6.0	1-3	.333	0-0	.000	2-4	.500	3	1	4	2.0	4	0	0	3	0	0	4	2.0
40	Reese Schumann	2-0	8	4.0	0-0	.000	0-0	.000	2-2	1.000	0	0	0	0.0	1	0	0	0	0	0	2	1.0
Team											1	3	4				2					
Total.....		2	400		48-102	.471	9-25	.360	42-51	.824	11	43	54	27.0	37	1	31	31	4	14	147	73.5
Opponents.....		2	400		50-108	.463	20-42	.476	32-39	.821	19	46	65	32.5	50	0	27	38	6	12	152	76.0

Date	Opponent		Score
11/03/23	UNION (TN)	L	78-87
11/05/23	ADAMS ST.	W	69-65

\* - Conference game

## AWAY STATISTICS

## NEUTRAL SITE STATISTICS

# LUBBOCK CHRISTIAN UNIVERSITY WOMEN'S BASKETBALL GAME NOTES

## LCU RECORD WHEN...

At home .....	1-1
On the road .....	0-0
Neutral site.....	0-0
Lone Star Conference .....	0-0

Monday .....	0-0
Tuesday.....	0-0
Wednesday .....	0-0
Thursday .....	0-0
Friday.....	0-1
Saturday.....	0-0
Sunday .....	1-0

Against ranked opponents.....	0-1
Top 5 opponents .....	0-0
Top 10 opponents .....	0-0

### Scoring

70-plus points .....	0-1
60-69 points .....	1-0
50-59 points .....	0-0
49 or less points.....	0-0

### Allowing

70-plus points .....	0-1
60-69 points .....	1-0
50-59 points .....	0-0
49 or less points.....	0-0

### Shooting

50% or better .....	0-1
40-49% .....	1-0
30-39% .....	0-0
29.9% or less .....	0-2

### Opponents Shooting

50% or better .....	0-0
40-49% .....	1-1
30-39% .....	0-0
29.9% or less .....	0-0

### Percentages From The Field

Out-shooting the opponent .....	0-1
Opponents out-shoot LCU .....	1-0
Tied .....	0-0

### Rebounding

Out-rebound an opponent.....	0-1
Opponent out-rebounds LCU .....	1-0
Tied .....	0-0

### Turnovers

Commit 15 or less turnovers .....	1-0
Commit more than 15 turnovers.....	0-1
Force 15 or less turnovers.....	1-1
Force more than 15 .....	0-0

### Misc.

When Leading after the 1st Quarter.....	1-0
When Tied after the 1st Quarter.....	0-0
When Trailing after the 1st Quarter.....	0-1

When Leading at halftime .....	1-0
When Tied at halftime .....	0-0
When Trailing at halftime .....	0-1

When Leading after the 3rd Quarter .....	0-0
When Tied after the 3rd Quarter .....	1-0
When Trailing after the 3rd Quarter .....	0-1
Overtime .....	0-0

## Lubbock Christian Team Game-by-Game Comparison (as of Nov 10, 2023)

### All games

Opponent	1st	2nd	Score	Mar	Total FG	FG Pct	3-Pointers	3FG Pct	Free Throws	FT Pct	Rebounds	Assist	T/Over	Block	Steal	Fouls
UNION (TN)	36/44	42/43	78-87	(9)	28-54/28-57	.519/.491	2-10/12-25	.200/.480	20-28/19-25	.714/.760	32/29 +3	19/14	19/19	2/2	5/6	23/29
ADAMS ST.	39/31	30/34	69-65	+4	20-48/22-51	.417/.431	7-15/8-17	.467/.471	22-23/13-14	.957/.929	22/36 (14)	12/13	12/19	2/4	9/6	14/21

Note: Game totals are displayed in the format TEAM/OPPONENT for each category

**Lubbock Christian Points-Rebounds-Assists (as of Nov 10, 2023)**
**All games**

				00	01	02	03	12	15	23
Opponent	Date	Score		FOSTER, GRA	CHAPPELL, K	MADDOX, MAC	ROBERTSON,	THOMAS, TAY	STOVALL, SH	MCCOY, MART
UNION (TN)	11/03/23	78-87	L	16-7-4	8-2-1	16-4-4	12-3-2	9-3-1	7-2-3	4-3-4
ADAMS ST.	11/05/23	69-65	W	28-8-3	2-0-1	14-4-4	6-2-1	3-3-0	11-0-2	5-5-1

				30	40
Opponent	Date	Score		SPURGIN, AU	SCHUMANN, R
UNION (TN)	11/03/23	78-87	L	4-4-0	2-0-0
ADAMS ST.	11/05/23	69-65	W	0-0-0	0-0-0



## LCU - TEAM GAME HIGHS

POINTS	78	UNION (TN) (11/03/23)
	69	ADAMS ST. (11/05/23)
FIELD GOALS MADE	28	UNION (TN) (11/03/23)
	20	ADAMS ST. (11/05/23)
FIELD GOAL ATTEMPTS	54	UNION (TN) (11/03/23)
	48	ADAMS ST. (11/05/23)
FIELD GOAL PERCENTAGE	.519 (28-54)	UNION (TN) (11/03/23)
	.417 (20-48)	ADAMS ST. (11/05/23)
3 PT FIELD GOALS MADE	7	ADAMS ST. (11/05/23)
	2	UNION (TN) (11/03/23)
3 PT FG ATTEMPTS	15	ADAMS ST. (11/05/23)
	10	UNION (TN) (11/03/23)
3 PT FG PERCENTAGE	.467 (7-15)	ADAMS ST. (11/05/23)
	.200 (2-10)	UNION (TN) (11/03/23)
FREE THROWS MADE	22	ADAMS ST. (11/05/23)
	20	UNION (TN) (11/03/23)
FREE THROW ATTEMPTS	28	UNION (TN) (11/03/23)
	23	ADAMS ST. (11/05/23)
FREE THROW PERCENTAGE	.957 (22-23)	ADAMS ST. (11/05/23)
	.714 (20-28)	UNION (TN) (11/03/23)
REBOUNDS	32	UNION (TN) (11/03/23)
	22	ADAMS ST. (11/05/23)
ASSISTS	19	UNION (TN) (11/03/23)
	12	ADAMS ST. (11/05/23)
STEALS	9	ADAMS ST. (11/05/23)
	5	UNION (TN) (11/03/23)
BLOCKED SHOTS	2	ADAMS ST. (11/05/23)
	2	UNION (TN) (11/03/23)
TURNOVERS	19	UNION (TN) (11/03/23)
	12	ADAMS ST. (11/05/23)
FOULS	23	UNION (TN) (11/03/23)
	14	ADAMS ST. (11/05/23)

## LCU - TEAM GAME LOWS

POINTS	69	ADAMS ST. (11/05/23)
	78	UNION (TN) (11/03/23)
FIELD GOALS MADE	20	ADAMS ST. (11/05/23)
	28	UNION (TN) (11/03/23)
FIELD GOAL ATTEMPTS	48	ADAMS ST. (11/05/23)
	54	UNION (TN) (11/03/23)
FIELD GOAL PERCENTAGE	.417 (20-48)	ADAMS ST. (11/05/23)
	.519 (28-54)	UNION (TN) (11/03/23)
3 PT FIELD GOALS MADE	2	UNION (TN) (11/03/23)
	7	ADAMS ST. (11/05/23)
3 PT FG ATTEMPTS	10	UNION (TN) (11/03/23)
	15	ADAMS ST. (11/05/23)
3 PT FG PERCENTAGE	.200 (2-10)	UNION (TN) (11/03/23)
	.467 (7-15)	ADAMS ST. (11/05/23)
FREE THROWS MADE	20	UNION (TN) (11/03/23)
	22	ADAMS ST. (11/05/23)
FREE THROW ATTEMPTS	23	ADAMS ST. (11/05/23)
	28	UNION (TN) (11/03/23)
FREE THROW PERCENTAGE	.714 (20-28)	UNION (TN) (11/03/23)
	.957 (22-23)	ADAMS ST. (11/05/23)
REBOUNDS	22	ADAMS ST. (11/05/23)
	32	UNION (TN) (11/03/23)
ASSISTS	12	ADAMS ST. (11/05/23)
	19	UNION (TN) (11/03/23)
STEALS	5	UNION (TN) (11/03/23)
	9	ADAMS ST. (11/05/23)
BLOCKED SHOTS	2	UNION (TN) (11/03/23)
	2	ADAMS ST. (11/05/23)
TURNOVERS	12	ADAMS ST. (11/05/23)
	19	UNION (TN) (11/03/23)
FOULS	14	ADAMS ST. (11/05/23)
	23	UNION (TN) (11/03/23)

## LCU OPPONENT - TEAM GAME HIGHS

POINTS	87	UNION (TN) (11/03/23)
	65	ADAMS ST. (11/05/23)
FIELD GOALS MADE	28	UNION (TN) (11/03/23)
	22	ADAMS ST. (11/05/23)
FIELD GOAL ATTEMPTS	57	UNION (TN) (11/03/23)
	51	ADAMS ST. (11/05/23)
FIELD GOAL PERCENTAGE	.491 (28-57)	UNION (TN) (11/03/23)
	.431 (22-51)	ADAMS ST. (11/05/23)
3 PT FIELD GOALS MADE	12	UNION (TN) (11/03/23)
	8	ADAMS ST. (11/05/23)
3 PT FG ATTEMPTS	25	UNION (TN) (11/03/23)
	17	ADAMS ST. (11/05/23)
3 PT FG PERCENTAGE	.480 (12-25)	UNION (TN) (11/03/23)
	.471 (8-17)	ADAMS ST. (11/05/23)
FREE THROWS MADE	19	UNION (TN) (11/03/23)
	13	ADAMS ST. (11/05/23)
FREE THROW ATTEMPTS	25	UNION (TN) (11/03/23)
	14	ADAMS ST. (11/05/23)
FREE THROW PERCENTAGE	.929 (13-14)	ADAMS ST. (11/05/23)
	.760 (19-25)	UNION (TN) (11/03/23)
REBOUNDS	36	ADAMS ST. (11/05/23)
	29	UNION (TN) (11/03/23)
ASSISTS	14	UNION (TN) (11/03/23)
	13	ADAMS ST. (11/05/23)
STEALS	6	ADAMS ST. (11/05/23)
	6	UNION (TN) (11/03/23)
BLOCKED SHOTS	4	ADAMS ST. (11/05/23)
	2	UNION (TN) (11/03/23)
TURNOVERS	19	ADAMS ST. (11/05/23)
	19	UNION (TN) (11/03/23)
FOULS	29	UNION (TN) (11/03/23)
	21	ADAMS ST. (11/05/23)

## LCU OPPONENT - TEAM GAME LOWS

POINTS	65	ADAMS ST. (11/05/23)
	87	UNION (TN) (11/03/23)
FIELD GOALS MADE	22	ADAMS ST. (11/05/23)
	28	UNION (TN) (11/03/23)
FIELD GOAL ATTEMPTS	51	ADAMS ST. (11/05/23)
	57	UNION (TN) (11/03/23)
FIELD GOAL PERCENTAGE	.431 (22-51)	ADAMS ST. (11/05/23)
	.491 (28-57)	UNION (TN) (11/03/23)
3 PT FIELD GOALS MADE	8	ADAMS ST. (11/05/23)
	12	UNION (TN) (11/03/23)
3 PT FG ATTEMPTS	17	ADAMS ST. (11/05/23)
	25	UNION (TN) (11/03/23)
3 PT FG PERCENTAGE	.471 (8-17)	ADAMS ST. (11/05/23)
	.480 (12-25)	UNION (TN) (11/03/23)
FREE THROWS MADE	13	ADAMS ST. (11/05/23)
	19	UNION (TN) (11/03/23)
FREE THROW ATTEMPTS	14	ADAMS ST. (11/05/23)
	25	UNION (TN) (11/03/23)
FREE THROW PERCENTAGE	.760 (19-25)	UNION (TN) (11/03/23)
	.929 (13-14)	ADAMS ST. (11/05/23)
REBOUNDS	29	UNION (TN) (11/03/23)
	36	ADAMS ST. (11/05/23)
ASSISTS	13	ADAMS ST. (11/05/23)
	14	UNION (TN) (11/03/23)
STEALS	6	UNION (TN) (11/03/23)
	6	ADAMS ST. (11/05/23)
BLOCKED SHOTS	2	UNION (TN) (11/03/23)
	4	ADAMS ST. (11/05/23)
TURNOVERS	19	UNION (TN) (11/03/23)
	19	ADAMS ST. (11/05/23)
FOULS	21	ADAMS ST. (11/05/23)
	29	UNION (TN) (11/03/23)

LCU - INDIVIDUAL GAME HIGHS

Points	28	Grace Foster vs Adams St. (11/05/23)
	16	Maci Maddox vs Union (TN) (11/03/23)
	16	Grace Foster vs Union (TN) (11/03/23)
	14	Maci Maddox vs Adams St. (11/05/23)
	12	Audrey Robertson vs Union (TN) (11/03/23)
Field Goals Made	8	Maci Maddox vs Union (TN) (11/03/23)
	7	Grace Foster vs Adams St. (11/03/23)
Field Goal Att.	14	Grace Foster vs Adams St. (11/05/23)
	12	Grace Foster vs Union (TN) (11/03/23)
FG Pct (min 5 made)	.727 (8-11)	Maci Maddox vs Union (TN) (11/03/23)
	.583 (7-12)	Grace Foster vs Union (TN) (11/03/23)
3-Point FG Made	3	Grace Foster vs Adams St. (11/05/23)
	2	Maci Maddox vs Adams St. (11/05/23)
3-Point FG Att.	6	Grace Foster vs Adams St. (11/05/23)
	3	Maci Maddox vs Adams St. (11/05/23)
	3	Shaylee Stovall vs Adams St. (11/05/23)
3-Pt FG Pct (min 2 made)	.667 (2-3)	Maci Maddox vs Adams St. (11/05/23)
	.500 (3-6)	Grace Foster vs Adams St. (11/05/23)
Free Throws Made	13	Grace Foster vs Adams St. (11/05/23)
	8	Shaylee Stovall vs Adams St. (11/05/23)
Free Throw Att.	13	Grace Foster vs Adams St. (11/05/23)
	8	Shaylee Stovall vs Adams St. (11/05/23)
FT Pct (min 3 made)	1.000 (13-13)	Grace Foster vs Adams St. (11/05/23)
	1.000 (8-8)	Shaylee Stovall vs Adams St. (11/05/23)
Rebounds	8	Grace Foster vs Adams St. (11/05/23)
	7	Grace Foster vs Union (TN) (11/03/23)
Assists	4	Maci Maddox vs Adams St. (11/05/23)
	4	Grace Foster vs Union (TN) (11/03/23)
	4	Maci Maddox vs Union (TN) (11/03/23)
	4	Martie McCoy vs Union (TN) (11/03/23)
Steals	3	Maci Maddox vs Adams St. (11/05/23)
	3	Audrey Robertson vs Union (TN) (11/03/23)
Blocked Shots	1	Grace Foster vs Adams St. (11/05/23)
	1	Martie McCoy vs Adams St. (11/05/23)
	1	Grace Foster vs Union (TN) (11/03/23)
	1	Martie McCoy vs Union (TN) (11/03/23)
Turnovers	8	Grace Foster vs Union (TN) (11/03/23)
	4	Maci Maddox vs Union (TN) (11/03/23)
Fouls	5	Taylor Thomas vs Union (TN) (11/03/23)
	4	Maci Maddox vs Union (TN) (11/03/23)
	4	Martie McCoy vs Union (TN) (11/03/23)
Minutes	40	Maci Maddox vs Adams St. (11/05/23)
	39	Grace Foster vs Adams St. (11/05/23)
	39	Maci Maddox vs Union (TN) (11/03/23)
	31	Martie McCoy vs Adams St. (11/05/23)
	31	Audrey Robertson vs Adams St. (11/05/23)
	31	Grace Foster vs Union (TN) (11/03/23)

OPPONENT - INDIVIDUAL GAME HIGHS

Points	19	Macey Lee vs Union (TN) (11/03/23)
	18	Shanique Lucas vs Union (TN) (11/03/23)
	17	Harmanie Dominguez vs Adams St. (11/05/23)
	15	Lauren West vs Union (TN) (11/03/23)
	13	Christabel Longe vs Adams St. (11/05/23)
Field Goals Made	8	Macey Lee vs Union (TN) (11/03/23)
	6	Harmanie Dominguez vs Adams St. (11/05/23)
	6	Christabel Longe vs Adams St. (11/05/23)
Field Goal Att.	11	Kayla Harris vs Adams St. (11/05/23)
	11	Lauren West vs Union (TN) (11/03/23)
FG Pct (min 5 made)	.800 (8-10)	Macey Lee vs Union (TN) (11/03/23)
	.750 (6-8)	Christabel Longe vs Adams St. (11/05/23)
3-Point FG Made	5	Lauren West vs Union (TN) (11/03/23)
	3	Harmanie Dominguez vs Adams St. (11/05/23)
	3	Macey Lee vs Union (TN) (11/03/23)
	3	Leah Cauble vs Union (TN) (11/03/23)
3-Point FG Att.	9	Lauren West vs Union (TN) (11/03/23)
	6	Leah Cauble vs Union (TN) (11/03/23)
3-Pt FG Pct (min 2 made)	.750 (3-4)	Harmanie Dominguez vs Adams St. (11/05/23)
	.750 (3-4)	Macey Lee vs Union (TN) (11/03/23)
Free Throws Made	9	Shanique Lucas vs Union (TN) (11/03/23)
	4	Elaina Watson vs Adams St. (11/05/23)
Free Throw Att.	10	Shanique Lucas vs Union (TN) (11/03/23)
	4	Riahana Davis vs Adams St. (11/05/23)
	4	Elaina Watson vs Adams St. (11/05/23)
	4	Brooke Hampel vs Union (TN) (11/03/23)
	4	Olivia Lee vs Union (TN) (11/03/23)
FT Pct (min 3 made)	1.000 (4-4)	Elaina Watson vs Adams St. (11/05/23)
	.900 (9-10)	Shanique Lucas vs Union (TN) (11/03/23)
Rebounds	8	Kayla Harris vs Adams St. (11/05/23)
	6	Christabel Longe vs Adams St. (11/05/23)
	6	Leah Cauble vs Union (TN) (11/03/23)
Assists	5	Kiiyani Anitieliu vs Adams St. (11/05/23)
	4	Brooke Hampel vs Union (TN) (11/03/23)
Steals	2	Kayla Harris vs Adams St. (11/05/23)
	2	Riahana Davis vs Adams St. (11/05/23)
	2	Jazalyn Anousinh vs Union (TN) (11/03/23)
Blocked Shots	2	Christabel Longe vs Adams St. (11/05/23)
	1	Harmanie Dominguez vs Adams St. (11/05/23)
	1	Kayla Harris vs Adams St. (11/05/23)
	1	Leah Cauble vs Union (TN) (11/03/23)
	1	Shanique Lucas vs Union (TN) (11/03/23)
Turnovers	4	Kiiyani Anitieliu vs Adams St. (11/05/23)
	4	Brooke Hampel vs Union (TN) (11/03/23)
Fouls	4	Riahana Davis vs Adams St. (11/05/23)
	4	Harmanie Dominguez vs Adams St. (11/05/23)
	4	Jazalyn Anousinh vs Union (TN) (11/03/23)
	4	Shanique Lucas vs Union (TN) (11/03/23)
	4	Leah Cauble vs Union (TN) (11/03/23)

DOUBLE-DOUBLES

Opponent	T/O	2ndCh	Paint	FastB	Bench	Ties	Leads	WL	Score	Leads overcome
Union (TN)	20	9	48	6	26	0	0	L	78-87	lost 4 1st-08:57
Adams St.	20	0	16	8	5	1	4	W	69-65	trailed by 6 1st-07:26
Totals	40	9	64	14	31	1	4			
Average/Game	20.0	4.5	32.0	7.0	15.5	0.5	2.0			
Opponent	37	16	54	10	55	4	4			
Average/Game	18.5	8.0	27.0	5.0	27.5	2.0	2.0			

GAME BY GAME SPECIALTY STATS

## CAREER STATISTICS

## CHAPPELL, Kennedy

				Field Goals		3-Point		F-Throws		Rebounds									Scoring	
SEASON	TEAM	GP-GS	MIN/AVG	FG-FGA	FG%	3FG-3FGA	3FG%	FT-FTA	FT%	OFF	DEF	TOT	AVG	PF-FO	A	TO	BLK	STL	PTS	AVG
2023-24	LCU	2-0	28/14.2	2-6	.333	0-2	.000	6-7	.857	1	1	2	1.0	3-0	2	0	0	0	10	5.0
<b>TOTAL</b>		<b>2-0</b>	<b>28/14.2</b>	<b>2-6</b>	<b>.333</b>	<b>0-2</b>	<b>.000</b>	<b>6-7</b>	<b>.857</b>	<b>1</b>	<b>1</b>	<b>2</b>	<b>1.0</b>	<b>3-0</b>	<b>2</b>	<b>0</b>	<b>0</b>	<b>0</b>	<b>10</b>	<b>5.0</b>

## Single Game Highs

Statistic	Value	
Points	8	vs Union (TN) 11/03/23
Rebounds	2	vs Union (TN) 11/03/23
Assists	1	vs Union (TN) 11/03/23, vs Adams St. 11/05/23
FG Made	1	vs Union (TN) 11/03/23, vs Adams St. 11/05/23
FG Attempts	4	vs Union (TN) 11/03/23
3FG Attempts	2	vs Union (TN) 11/03/23
FT Made	6	vs Union (TN) 11/03/23
FT Attempts	7	vs Union (TN) 11/03/23

## FOSTER, Grace

				Field Goals		3-Point		F-Throws		Rebounds									Scoring	
SEASON	TEAM	GP-GS	MIN/AVG	FG-FGA	FG%	3FG-3FGA	3FG%	FT-FTA	FT%	OFF	DEF	TOT	AVG	PF-FO	A	TO	BLK	STL	PTS	AVG
2021-22	LCU	35-0	549/15.7	95-189	.503	23-70	.329	46-57	.807	29	85	114	3.3	57-1	25	41	28	11	259	7.4
2022-23	LCU	35-35	1143/32.7	189-411	.460	47-128	.367	150-164	.915	48	263	311	8.9	71-1	66	87	26	22	575	16.4
2023-24	LCU	2-2	70/35.1	13-26	.500	3-8	.375	15-18	.833	1	14	15	7.5	4-0	7	11	2	0	44	22.0
<b>TOTAL</b>		<b>72-37</b>	<b>1762/24.5</b>	<b>297-626</b>	<b>.474</b>	<b>73-206</b>	<b>.354</b>	<b>211-239</b>	<b>.883</b>	<b>78</b>	<b>362</b>	<b>440</b>	<b>6.1</b>	<b>132-2</b>	<b>98</b>	<b>139</b>	<b>56</b>	<b>33</b>	<b>878</b>	<b>12.2</b>

## Single Game Highs

Statistic	Value	
Points	36	vs Missouri Western 11/06/22
Rebounds	17	vs Angelo St. 02/02/23
Assists	7	vs St. Mary's (TX) 02/18/23
Steals	2	7 times
Blocks	6	at Tex. A&M-Commerce 01/13/22
FG Made	13	vs Missouri Western 11/06/22
FG Attempts	20	vs Mo. Southern St. 11/05/22, vs Missouri Western 11/06/22
3FG Made	4	vs Missouri Western 11/06/22
3FG Attempts	8	vs Western N.M. 01/14/23
FT Made	13	vs Adams St. 11/05/23
FT Attempts	13	vs Adams St. 11/05/23

## JOHNSON, Deja

				Field Goals		3-Point		F-Throws		Rebounds									Scoring	
SEASON	TEAM	GP-GS	MIN/AVG	FG-FGA	FG%	3FG-3FGA	3FG%	FT-FTA	FT%	OFF	DEF	TOT	AVG	PF-FO	A	TO	BLK	STL	PTS	AVG
2022-23	LCU	11-0	62/5.6	4-10	.400	1-5	.200	7-8	.875	4	8	12	1.1	3-0	6	2	0	3	16	1.5
<b>TOTAL</b>		<b>11-0</b>	<b>62/5.6</b>	<b>4-10</b>	<b>.400</b>	<b>1-5</b>	<b>.200</b>	<b>7-8</b>	<b>.875</b>	<b>4</b>	<b>8</b>	<b>12</b>	<b>1.1</b>	<b>3-0</b>	<b>6</b>	<b>2</b>	<b>0</b>	<b>3</b>	<b>16</b>	<b>1.5</b>

## Single Game Highs

Statistic	Value	
Points	5	vs Cameron 12/30/22
Rebounds	3	vs Cameron 12/30/22
Assists	2	vs Cameron 12/30/22
Steals	1	vs Okla. Christian 12/01/22, vs Colo. Christian 11/11/22, vs Ark.-Fort Smith 12/03/22
FG Made	2	vs Cameron 12/30/22
FG Attempts	4	vs Cameron 12/30/22
3FG Made	1	vs Cameron 12/30/22
3FG Attempts	3	vs Cameron 12/30/22
FT Made	4	vs Colo. Christian 11/11/22
FT Attempts	4	vs Colo. Christian 11/11/22



**LUBBOCK CHRISTIAN UNIVERSITY WOMEN'S BASKETBALL GAME NOTES**
**JOHNSON, Tia**

				Field Goals		3-Point		F-Throws		Rebounds									Scoring	
SEASON	TEAM	GP-GS	MIN/AVG	FG-FGA	FG%	3FG-3FGA	3FG%	FT-FTA	FT%	OFF	DEF	TOT	AVG	PF-FO	A	TO	BLK	STL	PTS	AVG
2022-23	LCU	11-0	54/4.9	7-23	.304	2-10	.200	3-3	1.000	2	10	12	1.1	10-0	3	3	0	5	19	1.7
<b>TOTAL</b>		<b>11-0</b>	<b>54/4.9</b>	<b>7-23</b>	<b>.304</b>	<b>2-10</b>	<b>.200</b>	<b>3-3</b>	<b>1.000</b>	<b>2</b>	<b>10</b>	<b>12</b>	<b>1.1</b>	<b>10-0</b>	<b>3</b>	<b>3</b>	<b>0</b>	<b>5</b>	<b>19</b>	<b>1.7</b>

**Single Game Highs**

Statistic	Value	
Points	5	vs Tex. Permian Basin 02/04/23
Rebounds	3	vs Colo. Christian 11/11/22
Assists	1	vs Mo. Southern St. 11/05/22, vs Eastern N.M. 01/12/23, vs St. Edward's 02/16/23
Steals	2	vs St. Edward's 02/16/23
FG Made	2	at Midwestern St. 01/26/23, vs Tex. Permian Basin 02/04/23
FG Attempts	5	at Midwestern St. 01/26/23, vs Tex. Permian Basin 02/04/23
3FG Made	1	vs Tex. Permian Basin 02/04/23, vs Ark.-Fort Smith 12/03/22
3FG Attempts	2	vs Tex. Permian Basin 02/04/23, vs Ark.-Fort Smith 12/03/22
FT Made	2	vs St. Edward's 02/16/23
FT Attempts	2	vs St. Edward's 02/16/23

**MADDOX, Maci**

				Field Goals		3-Point		F-Throws		Rebounds									Scoring	
SEASON	TEAM	GP-GS	MIN/AVG	FG-FGA	FG%	3FG-3FGA	3FG%	FT-FTA	FT%	OFF	DEF	TOT	AVG	PF-FO	A	TO	BLK	STL	PTS	AVG
2020-21	LCU	15-0	98/6.6	13-25	.520	3-8	.375	3-3	1.000	3	6	9	0.6	5-0	8	7	0	13	32	2.1
2021-22	LCU	31-0	356/11.5	26-63	.413	10-21	.476	7-7	1.000	2	12	14	0.5	10-0	21	17	1	16	69	2.2
2022-23	LCU	35-35	1284/36.7	148-349	.424	31-88	.352	53-68	.779	14	109	123	3.5	36-0	146	93	4	65	380	10.9
2023-24	LCU	2-2	79/39.3	14-22	.636	2-3	.667	0-0	.000	0	8	8	4.0	5-0	8	6	0	4	30	15.0
<b>TOTAL</b>		<b>83-37</b>	<b>1816/21.9</b>	<b>201-459</b>	<b>.438</b>	<b>46-120</b>	<b>.383</b>	<b>63-78</b>	<b>.808</b>	<b>19</b>	<b>135</b>	<b>154</b>	<b>1.9</b>	<b>56-0</b>	<b>183</b>	<b>123</b>	<b>5</b>	<b>98</b>	<b>511</b>	<b>6.2</b>

**Single Game Highs**

Statistic	Value	
Points	19	vs Okla. Christian 12/01/22
Rebounds	8	vs Mont. St. Billings 12/17/22
Assists	9	at Tex. A&M-Kingsville 12/10/22
Steals	5	at Texas Woman's 01/21/23
Blocks	1	5 times
FG Made	8	vs Okla. Christian 12/01/22, at West Tex. A&M 02/23/23, vs Union (TN) 11/03/23
FG Attempts	19	at Tex. A&M Int'l 12/08/22
3FG Made	4	at UT Tyler 01/19/23
3FG Attempts	7	at UT Tyler 01/19/23
FT Made	8	vs Texas Woman's 03/10/23
FT Attempts	9	vs Texas Woman's 03/10/23

**LUBBOCK CHRISTIAN UNIVERSITY WOMEN'S BASKETBALL GAME NOTES**
**MCCOY, Martie**

				Field Goals		3-Point		F-Throws		Rebounds										Scoring	
SEASON	TEAM	GP-GS	MIN/AVG	FG-FGA	FG%	3FG-3FGA	3FG%	FT-FTA	FT%	OFF	DEF	TOT	AVG	PF-FO	A	TO	BLK	STL	PTS	AVG	
2022-23	LCU	35-18	562/16.1	40-106	.377	9-30	.300	31-39	.795	17	68	85	2.4	77-3	26	27	6	13	120	3.4	
2023-24	LCU	2-2	56/28.2	4-10	.400	0-3	.000	1-2	.500	1	7	8	4.0	7-0	5	1	2	2	9	4.5	
TOTAL		37-20	618/16.7	44-116	.379	9-33	.273	32-41	.780	18	75	93	2.5	84-3	31	28	8	15	129	3.5	

**Single Game Highs**

Statistic	Value	
Points	16	at West Tex. A&M 02/23/23
Rebounds	7	vs Missouri Western 11/06/22
Assists	4	vs Union (TN) 11/03/23
Steals	3	vs Black Hills St. 03/11/23
Blocks	2	vs St. Mary's (TX) 02/18/23
FG Made	6	at West Tex. A&M 02/23/23
FG Attempts	9	vs West Tex. A&M 02/25/23
3FG Made	2	at West Tex. A&M 02/23/23
3FG Attempts	3	at Midwestern St. 01/26/23, vs Angelo St. 02/02/23, vs UT Tyler 03/13/23
FT Made	5	vs Angelo St. 02/02/23
FT Attempts	6	vs Angelo St. 02/02/23

**ROBERTSON, Audrey**

				Field Goals		3-Point		F-Throws		Rebounds										Scoring	
SEASON	TEAM	GP-GS	MIN/AVG	FG-FGA	FG%	3FG-3FGA	3FG%	FT-FTA	FT%	OFF	DEF	TOT	AVG	PF-FO	A	TO	BLK	STL	PTS	AVG	
2020-21	LCU	20-0	177/8.9	12-33	.364	3-14	.214	7-9	.778	17	7	24	1.2	14-0	11	12	0	9	34	1.7	
2021-22	LCU	35-3	577/16.5	52-126	.413	9-37	.243	39-53	.736	20	25	45	1.3	49-0	35	27	6	25	152	4.3	
2022-23	LCU	35-35	1115/31.9	120-281	.427	24-82	.293	100-125	.800	40	125	165	4.7	67-2	103	77	7	44	364	10.4	
2023-24	LCU	2-1	61/30.5	7-19	.368	1-3	.333	3-4	.750	1	4	5	2.5	5-0	3	4	0	4	18	9.0	
TOTAL		92-39	1930/21.0	191-459	.416	37-136	.272	149-191	.780	78	161	239	2.6	135-2	152	120	13	82	568	6.2	

**Single Game Highs**

Statistic	Value	
Points	19	vs Mont. St. Billings 12/17/22
Rebounds	12	at Angelo St. 01/07/23
Assists	6	at UT Tyler 01/02/21, vs Colo. Christian 11/11/22
Steals	4	vs Okla. Christian 12/01/22, vs Colo. Christian 11/11/22
Blocks	2	at Southwestern Okla. 11/21/22, at Eastern N.M. 02/11/23
FG Made	7	vs Mont. St. Billings 12/17/22
FG Attempts	12	at Tex. Permian Basin 01/05/23, vs Angelo St. 02/02/23
3FG Made	3	vs Eastern N.M. 01/12/23, vs Tex. Permian Basin 02/04/23
3FG Attempts	6	vs UT Tyler 03/13/23
FT Made	8	vs Ark.-Fort Smith 03/01/22
FT Attempts	10	vs Ark.-Fort Smith 03/01/22

**LUBBOCK CHRISTIAN UNIVERSITY WOMEN'S BASKETBALL GAME NOTES**
**SCHUMANN, Reese**

				Field Goals		3-Point		F-Throws		Rebounds										Scoring	
SEASON	TEAM	GP-GS	MIN/AVG	FG-FGA	FG%	3FG-3FGA	3FG%	FT-FTA	FT%	OFF	DEF	TOT	AVG	PF-FO	A	TO	BLK	STL		PTS	AVG
2021-22	LCU	12-0	64/5.4	5-12	.417	0-0	.000	3-6	.500	9	13	22	1.8	9-0	0	3	2	0		13	1.1
2022-23	LCU	35-1	556/15.9	65-124	.524	0-0	.000	39-69	.565	52	114	166	4.7	87-2	14	54	39	16		169	4.8
2023-24	LCU	2-0	9/4.4	0-0	.000	0-0	.000	2-2	1.000	0	0	0	0.0	1-0	0	0	0	0		2	1.0
<b>TOTAL</b>		<b>49-1</b>	<b>629/12.8</b>	<b>70-136</b>	<b>.515</b>	<b>0-0</b>	<b>.000</b>	<b>44-77</b>	<b>.571</b>	<b>61</b>	<b>127</b>	<b>188</b>	<b>3.8</b>	<b>97-2</b>	<b>14</b>	<b>57</b>	<b>41</b>	<b>16</b>		<b>184</b>	<b>3.8</b>

**Single Game Highs**

Statistic	Value	
Points	14	at Cameron 01/28/23
Rebounds	10	at Tex. A&M Int'l 12/08/22
Assists	2	at Tex. A&M-Kingsville 12/10/22, at Western N.M. 02/09/23
Steals	2	vs Colo. Christian 11/11/22, vs Tex. A&M-Kingsville 03/02/23
Blocks	6	vs Western N.M. 01/14/23
FG Made	7	at Cameron 01/28/23
FG Attempts	8	vs Western N.M. 01/14/23, at Cameron 01/28/23
FT Made	3	vs Midwestern St. 01/01/23, vs Eastern N.M. 01/12/23
FT Attempts	6	vs Midwestern St. 01/01/23

**SPURGIN, Audrey**

				Field Goals		3-Point		F-Throws		Rebounds										Scoring	
SEASON	TEAM	GP-GS	MIN/AVG	FG-FGA	FG%	3FG-3FGA	3FG%	FT-FTA	FT%	OFF	DEF	TOT	AVG	PF-FO	A	TO	BLK	STL		PTS	AVG
2021-22	LCU	14-0	67/4.8	4-17	.235	0-0	.000	10-15	.667	1	13	14	1.0	14-0	0	9	1	2		18	1.3
2022-23	LCU	29-0	207/7.1	24-61	.393	0-1	.000	31-47	.660	17	26	43	1.5	39-0	4	15	3	2		79	2.7
2023-24	LCU	2-0	11/5.6	1-3	.333	0-0	.000	2-4	.500	3	1	4	2.0	4-0	0	3	0	0		4	2.0
<b>TOTAL</b>		<b>45-0</b>	<b>284/6.3</b>	<b>29-81</b>	<b>.358</b>	<b>0-1</b>	<b>.000</b>	<b>43-66</b>	<b>.652</b>	<b>21</b>	<b>40</b>	<b>61</b>	<b>1.4</b>	<b>57-0</b>	<b>4</b>	<b>27</b>	<b>4</b>	<b>4</b>		<b>101</b>	<b>2.2</b>

**Single Game Highs**

Statistic	Value	
Points	12	vs Texas Woman's 03/04/23
Rebounds	5	at Angelo St. 01/07/23
Assists	1	4 times
Steals	2	vs Minn.-Crookston 11/25/21
Blocks	1	4 times
FG Made	3	vs Cameron 12/30/22, vs Western N.M. 01/14/23, vs Texas Woman's 03/04/23
FG Attempts	5	4 times
3FG Attempts	1	vs Western Colo. 11/27/22
FT Made	6	vs Texas Woman's 03/04/23
FT Attempts	6	vs Ark.-Fort Smith 01/06/22, vs Okla. Christian 12/01/22, vs Texas Woman's 03/04/23

**STOVALL, Shaylee**

				Field Goals		3-Point		F-Throws		Rebounds										Scoring	
SEASON	TEAM	GP-GS	MIN/AVG	FG-FGA	FG%	3FG-3FGA	3FG%	FT-FTA	FT%	OFF	DEF	TOT	AVG	PF-FO	A	TO	BLK	STL		PTS	AVG
2020-21	LCU	16-0	86/5.4	4-15	.267	3-10	.300	4-4	1.000	1	4	5	0.3	5-0	11	4	0	1		15	0.9
2021-22	LCU	27-1	193/7.2	12-28	.429	9-16	.563	8-10	.800	2	14	16	0.6	15-0	6	7	0	8		41	1.5
2022-23	LCU	35-35	938/26.8	75-186	.403	46-115	.400	61-77	.792	9	41	50	1.4	52-0	34	36	0	20		257	7.3
2023-24	LCU	2-2	52/25.8	3-9	.333	1-4	.250	11-12	.917	2	0	2	1.0	2-0	5	2	0	2		18	9.0
<b>TOTAL</b>		<b>80-38</b>	<b>1269/15.9</b>	<b>94-238</b>	<b>.395</b>	<b>59-145</b>	<b>.407</b>	<b>84-103</b>	<b>.816</b>	<b>14</b>	<b>59</b>	<b>73</b>	<b>0.9</b>	<b>74-0</b>	<b>56</b>	<b>49</b>	<b>0</b>	<b>31</b>		<b>331</b>	<b>4.1</b>

**Single Game Highs**

Statistic	Value	
Points	18	at Texas Woman's 01/21/23
Rebounds	4	4 times
Assists	4	at Midwestern St. 01/26/23
Steals	4	at Tex. Permian Basin 01/05/23
FG Made	6	vs Okla. Christian 12/01/22, at Texas Woman's 01/21/23
FG Attempts	10	at Tex. A&M Int'l 12/08/22, at UT Tyler 01/19/23
3FG Made	4	at Angelo St. 01/07/23, at Texas Woman's 01/21/23
3FG Attempts	8	at UT Tyler 01/19/23
FT Made	9	vs Mo. Southern St. 11/05/22
FT Attempts	10	vs Mo. Southern St. 11/05/22



## THOMAS, Taylor

				Field Goals		3-Point		F-Throws		Rebounds								Scoring		
SEASON	TEAM	GP-GS	MIN/AVG	FG-FGA	FG%	3FG-3FGA	3FG%	FT-FTA	FT%	OFF	DEF	TOT	AVG	PF-FO	A	TO	BLK	STL	PTS	AVG
2022-23	LCU	25-0	215/8.6	19-42	.452	1-11	.091	21-23	.913	1	20	21	0.8	26-0	8	22	3	10	60	2.4
2023-24	LCU	2-1	34/16.9	4-7	.571	2-2	1.000	2-2	1.000	1	5	6	3.0	6-1	1	2	0	2	12	6.0
TOTAL		27-1	249/9.2	23-49	.469	3-13	.231	23-25	.920	2	25	27	1.0	32-1	9	24	3	12	72	2.7

## Single Game Highs

Statistic	Value	
Points	9	vs Tex. Permian Basin 02/04/23, vs Union (TN) 11/03/23
Rebounds	3	vs Midwestern St. 01/01/23, vs Union (TN) 11/03/23, vs Adams St. 11/05/23
Assists	2	vs Tex. Permian Basin 02/04/23
Steals	3	vs Midwestern St. 01/01/23
Blocks	1	vs Mo. Southern St. 11/05/22, vs Cameron 12/30/22, at Angelo St. 01/07/23
FG Made	3	vs Okla. Christian 12/01/22, vs Tex. Permian Basin 02/04/23, vs Union (TN) 11/03/23
FG Attempts	6	vs Tex. Permian Basin 02/04/23
3FG Made	1	vs Tex. Permian Basin 02/04/23, vs Union (TN) 11/03/23, vs Adams St. 11/05/23
3FG Attempts	3	vs Tex. Permian Basin 02/04/23
FT Made	4	at Tex. Permian Basin 01/05/23, vs Colo. Christian 11/11/22
FT Attempts	5	at Tex. Permian Basin 01/05/23

## THOMAS, Taylor

THOMAS, Taylor

				Field Goals		3-Point		F-Throws		Rebounds								Scoring		
SEASON	TEAM	GP-GS	MIN/AVG	FG-FGA	FG%	3FG-3FGA	3FG%	FT-FTA	FT%	OFF	DEF	TOT	AVG	PF-FO	A	TO	BLK	STL	PTS	AVG
2022-23	LCU	25-0	215/8.6	19-42	.452	1-11	.091	21-23	.913	1	20	21	0.8	26-0	8	22	3	10	60	2.4
TOTAL		25-0	215/8.6	19-42	.452	1-11	.091	21-23	.913	1	20	21	0.8	26-0	8	22	3	10	60	2.4

## Single Game Highs

Statistic	Value	
Points	9	vs Tex. Permian Basin 02/04/23
Rebounds	3	vs Midwestern St. 01/01/23
Assists	2	vs Tex. Permian Basin 02/04/23
Steals	3	vs Midwestern St. 01/01/23
Blocks	1	vs Mo. Southern St. 11/05/22, vs Cameron 12/30/22, at Angelo St. 01/07/23
FG Made	3	vs Okla. Christian 12/01/22, vs Tex. Permian Basin 02/04/23
FG Attempts	6	vs Tex. Permian Basin 02/04/23
3FG Made	1	vs Tex. Permian Basin 02/04/23
3FG Attempts	3	vs Tex. Permian Basin 02/04/23
FT Made	4	at Tex. Permian Basin 01/05/23, vs Colo. Christian 11/11/22
FT Attempts	5	at Tex. Permian Basin 01/05/23



2023-24 Lubbock Christian Women's Basketball  
Individual Game-by-Game  
All games

Page 1/9  
as of Nov 10, 2023

#0 FOSTER, Grace

Opponent	Date	GS	MIN	Total		3-Pointers		Free throws		Rebounds											
				FG-FGA	PCT	3FG-3FGA	PCT	FT-FTA	PCT	OFF	DEF	TOT	AVG	PF	A	TO	BLK	STL	PTS	AVG	
Union (TN)	11/03/2023	*	31:10	7-12	.583	0-2	.000	2-5	.400	1	6	7	7.0	3	4	8	1	0	16	16.0	
Adams St.	11/05/2023	*	39:04	6-14	.429	3-6	.500	13-13	1.000	0	8	8	7.5	1	3	3	1	0	28	22.0	
Totals		2	70:14	13-26	.500	3-8	.375	15-18	.833	1	14	15	7.5	4	7	11	2	0	44	22.0	

Player Averages

Games Played	Minutes/game	Points/game	FG Pct	3FG Pct	FT Pct	Rebounds/game	Assists/game	Turnovers/game	Assist/Turnover ratio	Steals/game	Blocks/game
2	35.1	22.0	50.0	37.5	83.3	7.5	3.5	5.5	0.6	0.0	1.0



2023-24 Lubbock Christian Women's Basketball  
Individual Game-by-Game  
All games

Page 2/9  
as of Nov 10, 2023

#1 CHAPPELL, Kennedy

Opponent	Date	GS	MIN	Total		3-Pointers		Free throws		Rebounds											
				FG-FGA	PCT	3FG-3FGA	PCT	FT-FTA	PCT	OFF	DEF	TOT	AVG	PF	A	TO	BLK	STL	PTS	AVG	
Union (TN)	11/03/2023		19:59	1-4	.250	0-2	.000	6-7	.857	1	1	2	2.0	2	1	0	0	0	8	8.0	
Adams St.	11/05/2023		08:26	1-2	.500	0-0	.000	0-0	.000	0	0	0	1.0	1	1	0	0	0	2	5.0	
Totals		0	28:25	2-6	.333	0-2	.000	6-7	.857	1	1	2	1.0	3	2	0	0	0	10	5.0	

Player Averages

Games Played	Minutes/game	Points/game	FG Pct	3FG Pct	FT Pct	Rebounds/game	Assists/game	Turnovers/game	Assist/Turnover ratio	Steals/game	Blocks/game
2	14.2	5.0	33.3	0.0	85.7	1.0	1.0	0.0	2.0	0.0	0.0





2023-24 Lubbock Christian Women's Basketball  
Individual Game-by-Game  
All games

Page 3/9  
as of Nov 10, 2023

#2 MADDUX, Maci

Opponent	Date	GS	MIN	Total		3-Pointers		Free throws		Rebounds										
				FG-FGA	PCT	3FG-3FGA	PCT	FT-FTA	PCT	OFF	DEF	TOT	AVG	PF	A	TO	BLK	STL	PTS	AVG
Union (TN)	11/03/2023	*	38:40	8-11	.727	0-0	.000	0-0	.000	0	4	4	4.0	4	4	4	0	1	16	16.0
Adams St.	11/05/2023	*	40:00	6-11	.545	2-3	.667	0-0	.000	0	4	4	4.0	1	4	2	0	3	14	15.0
Totals		2	78:40	14-22	.636	2-3	.667	0-0	.000	0	8	8	4.0	5	8	6	0	4	30	15.0

Player Averages

Games Played	Minutes/ game	Points/ game	FG Pct	3FG Pct	FT Pct	Rebounds/ game	Assists/ game	Turnovers/ game	Assist/Turnover ratio	Steals/ game	Blocks/ game
2	39.3	15.0	63.6	66.7	0.0	4.0	4.0	3.0	1.3	2.0	0.0



2023-24 Lubbock Christian Women's Basketball  
Individual Game-by-Game  
All games

Page 4/9  
as of Nov 10, 2023

#3 ROBERTSON, Audrey

Opponent	Date	GS	MIN	Total		3-Pointers		Free throws		Rebounds										
				FG-FGA	PCT	3FG-3FGA	PCT	FT-FTA	PCT	OFF	DEF	TOT	AVG	PF	A	TO	BLK	STL	PTS	AVG
Union (TN)	11/03/2023		29:41	4-10	.400	1-2	.500	3-4	.750	0	3	3	3.0	3	2	1	0	3	12	12.0
Adams St.	11/05/2023	*	31:18	3-9	.333	0-1	.000	0-0	.000	1	1	2	2.5	2	1	3	0	1	6	9.0
Totals		1	60:59	7-19	.368	1-3	.333	3-4	.750	1	4	5	2.5	5	3	4	0	4	18	9.0

Player Averages

Games Played	Minutes/game	Points/game	FG Pct	3FG Pct	FT Pct	Rebounds/game	Assists/game	Turnovers/game	Assist/Turnover ratio	Steals/game	Blocks/game
2	30.5	9.0	36.8	33.3	75.0	2.5	1.5	2.0	0.8	2.0	0.0



2023-24 Lubbock Christian Women's Basketball  
Individual Game-by-Game  
All games

Page 5/9  
as of Nov 10, 2023

#12 THOMAS, Taylor

Opponent	Date	GS	MIN	Total		3-Pointers		Free throws		Rebounds											
				FG-FGA	PCT	3FG-3FGA	PCT	FT-FTA	PCT	OFF	DEF	TOT	AVG	PF	A	TO	BLK	STL	PTS	AVG	
Union (TN)	11/03/2023	*	20:12	3-5	.600	1-1	1.000	2-2	1.000	1	2	3	3.0	5	1	1	0	0	9	9.0	
Adams St.	11/05/2023		13:35	1-2	.500	1-1	1.000	0-0	.000	0	3	3	3.0	1	0	1	0	2	3	6.0	
Totals		1	33:47	4-7	.571	2-2	1.000	2-2	1.000	1	5	6	3.0	6	1	2	0	2	12	6.0	

Player Averages

Games Played	Minutes/ game	Points/ game	FG Pct	3FG Pct	FT Pct	Rebounds/ game	Assists/ game	Turnovers/ game	Assist/Turnover ratio	Steals/ game	Blocks/ game
2	16.9	6.0	57.1	100.0	100.0	3.0	0.5	1.0	0.5	1.0	0.0



2023-24 Lubbock Christian Women's Basketball  
Individual Game-by-Game  
All games

Page 6/9  
as of Nov 10, 2023

#15 STOVALL, Shaylee

Opponent	Date	GS	MIN	Total		3-Pointers		Free throws		Rebounds											
				FG-FGA	PCT	3FG-3FGA	PCT	FT-FTA	PCT	OFF	DEF	TOT	AVG	PF	A	TO	BLK	STL	PTS	AVG	
Union (TN)	11/03/2023	*	24:34	2-5	.400	0-1	.000	3-4	.750	2	0	2	2.0	1	3	1	0	1	7	7.0	
Adams St.	11/05/2023	*	26:57	1-4	.250	1-3	.333	8-8	1.000	0	0	0	1.0	1	2	1	0	1	11	9.0	
Totals		2	51:31	3-9	.333	1-4	.250	11-12	.917	2	0	2	1.0	2	5	2	0	2	18	9.0	

Player Averages

Games Played	Minutes/game	Points/game	FG Pct	3FG Pct	FT Pct	Rebounds/game	Assists/game	Turnovers/game	Assist/Turnover ratio	Steals/game	Blocks/game
2	25.8	9.0	33.3	25.0	91.7	1.0	2.5	1.0	2.5	1.0	0.0





2023-24 Lubbock Christian Women's Basketball  
Individual Game-by-Game  
All games

Page 7/9  
as of Nov 10, 2023

#23 MCCOY, Martie

Opponent	Date	GS	MIN	Total		3-Pointers		Free throws		Rebounds							
				FG-FGA	PCT	3FG-3FGA	PCT	FT-FTA	PCT	OFF	DEF	TOT	AVG	PF	A	TO	BLK
Union (TN)	11/03/2023	*	25:06	2-4	.500	0-2	.000	0-0	.000	0	3	3	3.0	4	4	1	1
Adams St.	11/05/2023	*	31:22	2-6	.333	0-1	.000	1-2	.500	1	4	5	4.0	3	1	0	1
Totals		2	56:28	4-10	.400	0-3	.000	1-2	.500	1	7	8	4.0	7	5	1	2

Player Averages

Games Played	Minutes/game	Points/game	FG Pct	3FG Pct	FT Pct	Rebounds/game	Assists/game	Turnovers/game	Assist/Turnover ratio	Steals/game	Blocks/game
2	28.2	4.5	40.0	0.0	50.0	4.0	2.5	0.5	5.0	1.0	1.0



2023-24 Lubbock Christian Women's Basketball  
Individual Game-by-Game  
All games

Page 8/9  
as of Nov 10, 2023

#30 SPURGIN, Audrey

Opponent	Date	GS	MIN	Total		3-Pointers		Free throws		Rebounds										
				FG-FGA	PCT	3FG-3FGA	PCT	FT-FTA	PCT	OFF	DEF	TOT	AVG	PF	A	TO	BLK	STL	PTS	AVG
Union (TN)	11/03/2023		05:38	1-3	.333	0-0	.000	2-4	.500	3	1	4	4.0	1	0	1	0	0	4	4.0
Adams St.	11/05/2023		05:31	0-0	.000	0-0	.000	0-0	.000	0	0	0	2.0	3	0	2	0	0	0	2.0
Totals		0	11:09	1-3	.333	0-0	.000	2-4	.500	3	1	4	2.0	4	0	3	0	0	4	2.0

Player Averages

Games Played	Minutes/ game	Points/ game	FG Pct	3FG Pct	FT Pct	Rebounds/ game	Assists/ game	Turnovers/ game	Assist/Turnover ratio	Steals/ game	Blocks/ game
2	5.6	2.0	33.3	0.0	50.0	2.0	0.0	1.5	0.0	0.0	0.0



2023-24 Lubbock Christian Women's Basketball  
Individual Game-by-Game  
All games

Page 9/9  
as of Nov 10, 2023

#40 SCHUMANN, Reese

Opponent	Date	GS	MIN	Total		3-Pointers		Free throws		Rebounds											
				FG-FGA	PCT	3FG-3FGA	PCT	FT-FTA	PCT	OFF	DEF	TOT	AVG	PF	A	TO	BLK	STL	PTS	AVG	
Union (TN)	11/03/2023		05:00	0-0	.000	0-0	.000	2-2	1.000	0	0	0	0.0	0	0	0	0	0	2	2.0	
Adams St.	11/05/2023		03:47	0-0	.000	0-0	.000	0-0	.000	0	0	0	0.0	1	0	0	0	0	0	1.0	
Totals		0	08:47	0-0	.000	0-0	.000	2-2	1.000	0	0	0	0.0	1	0	0	0	0	2	1.0	

Player Averages

Games Played	Minutes/game	Points/game	FG Pct	3FG Pct	FT Pct	Rebounds/game	Assists/game	Turnovers/game	Assist/Turnover ratio	Steals/game	Blocks/game
2	4.4	1.0	0.0	0.0	100.0	0.0	0.0	0.0	0.0	0.0	0.0

# LUBBOCK CHRISTIAN UNIVERSITY WOMEN'S BASKETBALL GAME NOTES

## Union (TN) vs Lubbock Christian 11/03/23 5:00 pm at Lubbock, TX

### Union (TN) 87 • 1-0,0-0 Gulf Sou

#	Player	Total		3-Ptr	Rebounds			PF	TP	A	TO	Blk	Stl	Min
		FG-FGA	FG-FGA	FT-FTA	Off	Def	Tot							
01	Shanique Lucas	g	4-10	1-3	9-10	0	2	2	4	18	2	1	1	20
03	Jazalyn Anousinh	g	1-2	0-0	2-2	1	2	3	4	4	0	3	0	22
04	Macey Lee	g	8-10	3-4	0-0	0	1	1	3	19	0	1	0	18
20	Bethany Dillard	g	1-3	0-2	1-1	0	0	0	1	3	2	2	0	15
24	Olivia Lee	g	1-2	0-0	2-4	0	3	3	0	4	0	2	0	12
11	Brooke Hampel		0-1	0-0	2-4	2	2	4	3	2	4	4	0	24
12	Emma Kallas		3-5	0-0	1-2	0	1	1	3	7	1	3	0	19
13	Lauren West		5-11	5-9	0-0	0	2	2	2	15	2	0	0	18
15	Shylee Morrison		0-1	0-1	2-2	1	0	1	2	2	1	2	0	16
22	Kieli Robinson		2-4	0-0	0-0	3	2	5	3	4	0	0	0	11
32	Leah Cauble		3-8	3-6	0-0	2	4	6	4	9	2	1	1	25
Team						0	1	1						
Totals			28-57	12-25	19-25	9	20	29	29	87	14	19	2	200
1st - FG %:		9-13	69.2%	2nd: 5-14	35.7%	3rd: 8-14	57.1%	4th: 6-16	37.5%	Game: 28-57	49.1%	Deadball		
3FG %:		7-9	77.8%	0-5	0.0%	3-5	60.0%	2-6	33.3%	12-25	48.0%	Rebounds		
FT %:		7-9	77.8%	2-2	100.0%	6-8	75.0%	4-6	66.7%	19-25	76.0%	Rebounds		

### Lubbock Christian 78 • 0-1,0-0 Lone Sta

#	Player	Total		3-Ptr	Rebounds			PF	TP	A	TO	Blk	Stl	Min
		FG-FGA	FG-FGA	FT-FTA	Off	Def	Tot							
00	Grace Foster	f	7-12	0-2	2-5	1	6	7	3	16	4	8	1	31
23	Martie McCoy	f	2-4	0-2	0-0	0	3	3	4	4	4	1	1	25
02	Maci Maddox	g	8-11	0-0	0-0	0	4	4	4	16	4	4	0	39
12	Taylor Thomas	g	3-5	1-1	2-2	1	2	3	5	9	1	1	0	21
15	Shaylee Stovall	g	2-5	0-1	3-4	2	0	2	1	7	3	1	0	24
01	Kennedy Chappell		1-4	0-2	6-7	1	1	2	2	8	1	0	0	21
03	Audrey Robertson		4-10	1-2	3-4	0	3	3	3	12	2	1	0	29
30	Audrey Spurgin		1-3	0-0	2-4	3	1	4	1	4	0	1	0	6
40	Reese Schumann		0-0	0-0	2-2	0	0	0	0	2	0	0	0	4
Team						1	3	4						
Totals			28-54	2-10	20-28	9	23	32	23	78	19	19	2	200
1st - FG %:		9-14	64.3%	2nd: 6-16	37.5%	3rd: 7-13	53.8%	4th: 6-11	54.5%	Game: 28-54	51.9%	Deadball		
3FG %:		1-3	33.3%	0-2	0.0%	1-3	33.3%	0-2	0.0%	2-10	20.0%	Rebounds		
FT %:		1-2	50.0%	4-8	50.0%	6-8	75.0%	9-10	90.0%	20-28	71.4%	Rebounds		

#### Officials:

Technical fouls: Union (TN)-None. Lubbock Christian-None.

Attendance: 347

2023-24 Women's Basketball. Round: 0. Lubbock Christian vs Union (TN). Played a

Score by periods	1st	2nd	3rd	4th	Total
Union (TN)	32	12	25	18	87
Lubbock Christian	20	16	21	21	78

## Adams St. vs Lubbock Christian 11/05/23 5:00 pm at Lubbock, TX

### Adams St. 65 • 1-1,0-0 RMAC

#	Player	Total		3-Ptr	Rebounds			PF	TP	A	TO	Blk	Stl	Min
		FG-FGA	FG-FGA	FT-FTA	Off	Def	Tot							
22	Christabel Longe	c	6-8	1-1	0-0	4	2	6	3	13	0	2	2	0
01	Harmanie Dominguez	g	6-10	3-4	2-2	0	5	5	4	17	3	1	1	36
11	Elaina Watson	g	1-3	0-0	4-4	1	4	5	2	6	3	2	0	28
21	Kiiyani Anitielu	g	2-6	1-3	0-0	1	3	4	1	5	5	4	0	1
24	Riahana Davis	g	2-9	1-5	3-4	1	4	5	4	8	0	3	0	2
03	Destinee Paulk		0-0	0-0	0-0	0	0	0	0	0	0	1	0	0
05	Kayla Harris		4-11	2-3	2-2	2	6	8	2	12	1	1	1	2
10	Angelline Nageak		0-2	0-1	2-2	0	0	0	3	2	1	2	0	0
14	Nyeniea John		1-2	0-0	0-0	0	2	2	2	2	0	2	0	0
Team						1	0	1						
Totals			22-51	8-17	13-14	10	26	36	21	65	13	19	4	6
1st - FG %:		6-12	50.0%	2nd: 5-13	38.5%	3rd: 7-14	50.0%	4th: 4-12	33.3%	Game: 22-51	43.1%	Deadball		
3FG %:		2-3	66.7%	2-5	40.0%	3-5	60.0%	1-4	25.0%	8-17	47.1%	Rebounds		
FT %:		0-0	0.0%	5-6	83.3%	2-2	100.0%	6-6	100.0%	13-14	92.9%	Rebounds		

### Lubbock Christian 69 • 1-1,0-0 Lone Sta

#	Player	Total		3-Ptr	Rebounds			PF	TP	A	TO	Blk	Stl	Min
		FG-FGA	FG-FGA	FT-FTA	Off	Def	Tot							
00	Grace Foster	f	6-14	3-6	13-13	0	8	8	1	28	3	3	1	0
23	Martie McCoy	f	2-6	0-1	1-2	1	4	5	3	5	1	0	1	2
02	Maci Maddox	g	6-11	2-3	0-0	0	4	4	1	14	4	2	0	3
03	Audrey Robertson	g	3-9	0-1	0-0	1	1	2	2	6	1	3	0	1
15	Shaylee Stovall	g	1-4	1-3	8-8	0	0	0	1	11	2	1	0	1
01	Kennedy Chappell		1-2	0-0	0-0	0	0	0	1	2	1	0	0	0
12	Taylor Thomas		1-2	1-1	0-0	0	3	3	1	3	0	1	0	2
30	Audrey Spurgin		0-0	0-0	0-0	0	0	0	3	0	0	2	0	0
40	Reese Schumann		0-0	0-0	0-0	0	0	0	1	0	0	0	0	0
Team						0	0	0						
Totals			20-48	7-15	22-23	2	20	22	14	69	12	12	2	9
1st - FG %:		6-15	40.0%	2nd: 5-9	55.6%	3rd: 4-13	30.8%	4th: 5-11	45.5%	Game: 20-48	41.7%	Deadball		
3FG %:		3-6	50.0%	2-3	66.7%	1-3	33.3%	1-3	33.3%	7-15	46.7%	Rebounds		
FT %:		1-1	100.0%	11-12	91.7%	2-2	100.0%	8-8	100.0%	22-23	95.7%	Rebounds		

#### Officials:

Technical fouls: Adams St.-None. Lubbock Christian-None.

Attendance: 287

2023-24 Women's Basketball. Round: 0. Adams St. vs Lubbock Christian. Played a

Score by periods	1st	2nd	3rd	4th	Total
Adams St.	14	17	19	15	65
Lubbock Christian	16	23	11	19	69



## OPPONENT BREAKDOWN

### Colorado Christian (0-0, 0-0)



Location: Lakewood, Colo.

Enrollment: 7,600

Head Coach: Diane Thompson

Assistants: Julia Trujillo, Traci Nemechek

## ALL-TIME MEETINGS

Date	Winner	Score
12/4/93	CCU (H)	72-55
11/12/21	LCU (A)	60-46
11/11/22	LCU (H)	85-64

A - road team won

H - home team won

## LCU SERIES HIGHS (since 2021)

<b>Points:</b>	85	vs CCU	11/11/22
Individual Points:	19	Laynee Burr	11/12/21
<b>Field Goal %:</b>	.441	vs CCU	11/11/22
Indiv. FG made:	7	Laynee Burr	11/12/21
<b>Three-pointers:</b>	7	vs CCU	11/11/22
Individual "3's":	3	2 TIED	
<b>Rebounds:</b>	38	vs CCU	11/11/22
Individual Reb:	10	Grace Foster	11/11/22
<b>Assists:</b>	16	vs CCU	11/11/22
Individual Assists:	6	Audrey Robertson	11/11/22
<b>Blocks:</b>	5	vs CCU	11/11/22
Individual Blocks:	5	Reese Schumann	11/11/22

## ROSTER

#	Full Name	Pos	Ht.	Yr.	Hometown / High School
1	Nicole Bowlin	PG	5-6	So.	Edina, MN / Holy Family Catholic High School
3	Victoria Perez	G	5-6	So.	El Paso, TX / San Elizario High School
4	Makayla Boatman	G	5-9	Fr.	Polk City, IA / North Polk High School
5	Regan LoConte	SG	5-11	Sr.	Mokena, IL / Quincy University
10	Agnes Paul	F	6-1	Gr.	Benue, Nigeria / University of Delaware
11	Dasiya Jones	G	6-1	Jr.	Colorado Springs, CO / Regis University
13	Charis Kelly	G	5-9	Fr.	Austin, TX / Founders Classical Academy of Leander
20	Jenna Kendall	G	5-7	Fr.	Sachse, TX / Homeschool
21	Maggie Hutka	SF	6-1	So.	Royse City, TX / Royse City High School
23	Kennedy White	F	6-2	Fr.	Ames, IA / Ankeny Centennial High School
24	Mia Guest	PG	5-8	Jr.	Los Lunas, NM / Los Lunas High School
32	Maggie Phipps	F	5-11	Jr.	Ankeny, IA / Drake University
34	Kora Huff	F	6-3	Fr.	Midlothian, TX / Midlothian High School

## 2023-24 TEAM STATISTICS

## 2023-2024 RESULTS

## OPPONENT BREAKDOWN

### Colorado State-Pueblo (0-2)



Location: Pueblo, Colo.

Enrollment: 3,633

Head Coach: Tommie Johnson

Assistant Coach: Jalen Little, Jaylin Duran

## ALL-TIME MEETINGS (LCU leads 8-5)

Date	Winner	Score
12/9/88	LCU (H)	58-56
12/8/89	CSU-P (H)	73-72
12/7/02	LCU (H)	90-82
12/3/04	CSU-P (H)	79-67
12/2/05	CSU-P (H)	72-64
11/13/15	LCU (R)	68-43
11/12/16	CSU-P (N1)	65-61
11/10/17	LCU (N2)	57-52
11/9/18	LCU (H)	78-74
11/8/19	LCU (A)	77-60
11/13/21	CSU-P (N3)	64-56
3/11/22	LCU (N4)	65-57
11/12/22	LCU (H)	76-58

(H) - Home team won

(R) - Road team won

(N1) - Neutral Site Game in Denver, Colo.

(N2) - Neutral Site Game in Commerce, Texas

(N3) - Neutral Site Game in Lakewood, Colo.

(N4) - NCAA So. Central Regional (Canyon, Texas)

### LCU SERIES HIGHS (SINCE 2008)

<b>Points:</b>	90	at LCU 12/7/02
Individual Points:	25	Grace Foster 11/12/22
<b>Field Goal %:</b>	.511	vs CSU-P 11/12/22
Indiv. FG made:	8	2 tied
<b>Three-pointers:</b>	11	at CSU-P 11/8/19
Individual "3's":	4	3 tied
<b>Rebounds:</b>	47	at CSU-P 11/13/15
Individual Reb:	11	Grace Foster 11/12/22
<b>Assists:</b>	22	vs CSU-P 11/10/18
Individual Assists:	9	Allie Schulte 11/10/18
<b>Blocks:</b>	6	at CSU-P 11/13/15
Individual Blocks:	3	Tess Bruffey 11/13/15

## ROSTER

##	Name	Pos.	Ht.	Yr.	Hometown / High School / Previous School
0	Romola Dominguez***	G	5-7	Gr.	Denver, Colo. / Bear Creek / So Plains CC / Central Ark.
1	Yara Garcia	G	5-7	Jr.	Scottsbluff, Neb. / Scottsbluff / Western Nebraska CC
3	Jaida Wolfork*	F	5-11	R-Jr.	Huber Heights, Ohio / Wayne / Purdue Fort Wayne
4	Jolene Ramiro	G	5-6	Fr.	Aurora, Colo. / Eaglecrest
5	Shamahra Henderson	G-F	5-8	Jr.	Denver, Colo. / Thornton / Cowley County CC
11	Shayla Padilla	G-F	5-9	R-Fr.	Pueblo, Colo. / Pueblo West / Air Force Academy
13	Tomia Johnson**	G	5-6	Jr.	Colo. Springs, Colo. / Grandview / Fla. Gulf Coast
15	Alisha Davis-Little*	F	6-1	R-Jr.	Aurora, Colo. / Grandview / Northern Colorado
21	Landri Hudson*	G	5-8	Jr.	Aurora, Colo. / Grandview / University of Wyoming
22	Brynae Stewart	G-F	5-11	Fr.	Colorado Springs, Colo. / Pine Creek
30	Autumn Watts	F	6-1	R-Jr.	Centennial, Colo. / Highlands Ranch / McNeese St.
33	Leilani Love	F	6-1	Fr.	Albuquerque, N.M. / Albuquerque
34	Teona Pop Stojanova*	F	6-1	Sr.	Skopje, Macadonia / NEO A&M / Dodge City CC

\* - denotes letters earned at CSU Pueblo

## TEAM STATISTICS

### Game Records

Record	Overall	Home	Away	Neutral
ALL GAMES	0-2	0-0	0-0	0-2
CONFERENCE	0-0	0-0	0-0	0-0
NON-CONFERENCE	0-2	0-0	0-0	0-2

### Score by Periods

Team	1st	2nd	3rd	4th	OT	TOT
CSU Pueblo	24	34	23	42	0	123
Opponents	40	47	49	38	0	174

### Team Box Score

Team Box Score																																				
No.	Player	GP-GS					MIN		AVG		Total		3-Point		F-Throw		Rebounds				PF		DQ		A		TO		BLK		STL		PTS		AVG	
		GP	GS		MIN		AVG		FG	FGA	FG%	3FG	3FGA	3FG%	FT	FTA	FT%	OFF	DEF	TOT	AVG	PF	DQ	A	TO	BLK	STL	PTS	AVG							
15	LITTLE, Alisha	2-2	57:51	28.9	10-25	.400	2-6	.333	10-15	.667	6	12	18	9.0	5	0	1	5	5	4	32	16.0														
33	LOVE, Leilani	2-0	34:30	17.3	6-14	.429	0-0	.000	5-6	.833	8	8	16	8.0	4	0	1	1	1	0	17	8.5														
21	HUDSON, Landri	2-2	52:60	26.5	5-15	.333	4-11	.364	2-2	1.000	0	2	2	1.0	5	0	2	8	1	0	16	8.0														
13	JOHNSON, Tomia	2-2	46:07	23.1	5-14	.357	4-8	.500	1-4	.250	0	2	2	1.0	5	0	7	7	0	5	15	7.5														
30	WATTS, Autumn	2-2	41:26	20.7	3-7	.429	0-2	.000	7-8	.875	4	2	6	3.0	8	0	0	10	2	2	13	6.5														
0	DOMINGUEZ, Romola	2-2	34:52	17.4	2-12	.167	1-8	.125	7-8	.875	1	5	6	3.0	3	0	3	5	1	1	12	6.0														
5	HENDERSON, Shamahra	2-0	37:11	18.6	2-8	.250	0-1	.000	4-4	1.000	3	4	7	3.5	5	0	0	6	0	3	8	4.0														
4	RAMIRO, Anjolene	2-0	21:28	10.7	2-3	.667	0-1	.000	1-1	1.000	0	1	1	0.5	3	0	0	4	0	2	5	2.5														
34	STOJANOVA, Teona	2-0	04:32	2.3	1-1	1.000	0-0	.000	1-1	1.000	0	2	2	1.0	0	0	0	1	0	0	3	1.5														
22	STEWART, Brynae	2-0	33:22	16.7	1-4	.250	0-1	.000	0-0	.000	1	3	4	2.0	4	0	1	6	0	2	2	1.0														
1	GARCIA, Yara	2-0	29:41	14.8	0-1	.000	0-0	.000	0-0	.000	1	2	3	1.5	5	1	2	4	0	2	0	0.0														
3	WOLFORK, Jaida	2-0	05:59	3.0	0-1	.000	0-0	.000	0-0	.000	0	0	0	0.0	0	0	1	0	0	0	0	0.0														
Team																	4	8	12						5											
Total		2	400		37-105	.352	11-38	.289	38-49	.776	28	51	79	39.5	47	1	18	62	10	21	123	61.5														
Opponents		2	400		61-140	.436	16-56	.286	36-52	.692	35	45	80	40.0	44	0	35	35	3	31	174	87.0														

## 2022-2023 RESULTS

Date	Opponent	Score
11/03/2023	vs Azusa Pacific	L 53-66
11/04/2023	vs Union (TN)	L 70-108

## SINGLE-SEASON RECORDS

## Points Scored:

657	Beth Capps	1996-97
575	Grace Foster	2022-23
574	Beth Capps	1995-96
562	Kelsey Canavan	2011-12
560	Jordan Hampton	2006-07

## Points Per Game Average:

22.7	Beth Capps	1996-97
20.0	Kechia Mason	1997-98
19.9	Burgundy Bass	1989-90
18.7	Nettie Gilbreath	1986-87

## Field Goals Attempted:

516	Tonya Ivie	1981-82
492	Beth Capps	1995-96
435	Darla Lynch	1980-81
429	Kelsey Canavan	2011-12
425	Beth Capps	1996-97

## Field Goals Made:

237	Beth Capps	1996-97
236	Kelsey Canavan	2011-12
217	Tonya Ivie	1981-82
210	Beth Capps	1995-96
202	Mamy N'Kolomoni	2000-01

## Field Goal Percentage (Min. 300 Att.):

.580	Nicole Hampton	2015-16
.561	Roberta Ross	1986-87
.558	Beth Capps	1996-97
.556	Tess Bruffey	2015-16
.554	Carol Hise	1990-91

## Assists:

221	Krista Lent	1990-91
211	Nicole Hampton	2015-16
197	Sierra Lovorn	2007-08
192	Nicole Hampton	2012-13
189	Krista Lent	1989-90

## Three Pointers Attempted:

240	Ashton Duncan	2021-22
216	Kelsey Hoppel	2015-16
203	Angie Taylor	1997-98
191	Ashton Duncan	2021-22
188	Sierra Lovorn	2007-08

## Three Pointers Made:

90	Kelsey Hoppel	2015-16
90	Ashton Duncan	2021-22
79	Ashton Duncan	2019-20
74	Kelsey Hoppel	2012-13
74	Jordan Hampton	2007-08
74	Angie Taylor	1997-98

## Three Point Percentage (Min. 100 Att.):

.517	Allie Schulte	2018-19
.497	Jordan Hampton	2007-08
.469	Kelsey Hoppel	2013-14
.466	Jordan Hampton	2006-07
.463	Bailey Haist	2014-15

## Steals:

115	Krista Lent	1990-91
107	Nicole Hampton	2015-16
105	Sherry Blackwell	1990-91
102	Tina Phillips	1991-92
99	Selestine Hurst	1996-97

## Free Throws Attempted:

228	Mamy N'Kolomoni	2001-02
212	Beth Capps	1996-97
211	Carolyn Manning	2007-08
201	Emily Pool (Atkins)	2010-11
197	Emily Pool (Atkins)	2011-12

## Free Throws Made:

177	Carolyn Manning	2007-08
166	Beth Capps	1996-97
157	Emily Pool (Atkins)	2011-12
156	Jordan Hampton	2006-07
153	Mamy N'Kolomoni	2001-02

## Free Throw Percentage (Min. 50 Att.):

.938	Kelsey Hoppel	2013-14
.924	Nicole Hampton	2011-12
.922	Caitlyn Cunyus	2017-18
.921	Nicole Hampton	2012-13
.915	Grace Foster	2022-23

## Blocked Shots:

129	Tess Bruffey	2017-18
113	Kellyn Schneider	2014-15
108	Tess Bruffey	2016-17
91	Kellyn Schneider	2015-16
86	Tess Bruffey	2014-15

## Rebounds:

311	Grace Foster	2022-23
310	Nicole Hampton	2012-13
288	Kellyn Schneider	2014-15
282	Carolyn Manning	2007-08
281	Tess Bruffey	2017-18

## Rebounds Per Game:

10.5	Laura Geurin	1983-84
10.3	Kellyn Schneider	2014-15
10.1	Nettie Gilbreath	1986-87
9.9	Darla Lynch	1981-82
9.2	Mamy N'Kolomoni	2000-01

## CAREER RECORDS

## Points Scored:

1,796	Nicole Hampton	2011-16
1,773	Beth Capps	1995-97
1,767	Jordan Hampton	2005-09
1,728	Tess Bruffey	2014-18
1,725	Emily Pool (Atkins)	2010-14

## Points Per Game Average:

17.1	Nettie Gilbreath	1985-87
16.1	Beth Capps	1993-97
15.8	Burgundy Bass	1987-90
15.4	Darla Lynch	1979-83

## Field Goals Attempted:

1,387	Darla Lynch	1979-83
1,352	Tess Bruffey	2014-18
1,316	Beth Capps	1993-97
1,278	Mamy N'Kolomoni	1998-02
1,213	Emily Pool (Atkins)	2010-14

## Field Goals Made:

640	Beth Capps	1993-97
631	Tess Bruffey	2014-18
628	Mamy N'Kolomoni	1998-02
590	Nicole Hampton	2011-16
588	Darla Lynch	1979-83

## Field Goal Percentage (Min. 700 Att.):

.585	Haley Fowler	416-711
.547	Kelsey Canavan	416-760
.540	Nicole Hampton	590-1093
.511	Robertta Ross	362-709
.510	Maddi Chitsey	503-987

## Assists:

659	Nicole Hampton	2011-16
633	Sierra Lovorn (Wilcox)	2005-09
439	Haley Burton	2010-15
421	Allie Schulte	2017-22
397	Brittany Roberts (Hampton)	2008-12

## Three Pointers Attempted:

708	Ashton Duncan	2017-->
672	Sierra Lovorn (Wilcox)	2005-09
646	Kelsey Hoppel	2011-16
560	Jordan Hampton	2005-09
559	Haley Burton	2010-15

## Three Pointers Made:

276	Ashton Duncan	2017--22
272	Kelsey Hoppel	2011-16
248	Jordan Hampton	2005-09
234	Sierra Lovorn (Wilcox)	2005-09
204	Haley Burton	2010-15

## Three Point Percentage (Min. 200 Att.):

.444	Allie Schulte	176-396
.443	Jordan Hampton	192-407
.421	Kelsey Hoppel	272-646
.407	Brittany Roberts (Hampton)	154-378
.407	Bailey Haist	148-364

## Steals:

330	Nicole Hampton	2011-16
320	Allie Schulte	2017-22
271	Sherry Brown	1979-83
235	Sherry Blackwell	1988-91
226	Tabitha Qubty-Sellers	2000-04

## Free Throws Attempted:

725	Emily Pool (Atkins)	2010-14
706	Mamy N'Kolomoni	1998-02
586	Beth Capps	1993-97
560	Nicole Hampton	2011-16
519	Jordan Hampton	2005-09

## Free Throws Made:

565	Emily Pool (Atkins)	2010-14
510	Nicole Hampton	2011-16
459	Brittany Roberts (Hampton)	2008-12
456	Mamy N'Kolomoni	1998-02
449	Jordan Hampton	2005-09

## Free Throw Percentage (Min. 100 Att.):

.911	Nicole Hampton	510-560
.874	Brittany Roberts (Hampton)	458-525
.873	Olivia Robertson	282-323
.865	Jordan Hampton	449-519
.848	Severyn Smith	224-264

## Blocked Shots:

396	Tess Bruffey	2014-18
204	Kellyn Schneider	2014-16
174	Suzanne Copeland	1988-92
149	Maddi Chitsey	2016-20
122	Candace Clenney	2002-06

## Rebounds:

1,053	Nicole Hampton	2011-16
911	Mamy N'Kolomoni	1998-02
845	Tess Bruffey	2014-18
838	Darla Lynch	1979-83
732	Carol Hise	1990-94

## Rebounds Per Game:

9.39	Nettie Gilbreath	1985-87
8.38	Darla Lynch	1979-83
8.10	Nicole Hampton	2011-16
8.09	Kellyn Schneider	2014-16
7.92	Sharon Marion	1984-86

## SINGLE GAME TEAM RECORDS

Points Scored:	
Lady Chaps:	125 vs Whittier College (12/28/94)
Opponents:	110 Panhandle State (2/11/93)
Individual:	38 Beth Capps (1/22/96)
Field Goals Made:	
Lady Chaps:	52 vs Whittier College (1/28/94)
Opponents:	44 Midwestern State (1/9/87)
Individual:	16 Nettie Gilbreath (1/10/87), Beth Capps (11/22/96 & 2/1/96)
Field Goals Attempted:	
Lady Chaps:	94 vs McMurry (2/26/82)
Opponents:	95 Bishop College (1/7/82)
Individual:	29 Beth Capps (2/1/96)
Field Goal Percentage:	
Lady Chaps:	.692 (36-52) vs Eastern New Mexico (11/29/14)
Opponents:	.714 Panhandle State (1/15/90)
Three Pointers Made:	
Lady Chaps:	18 vs Oklahoma Panhandle State (2/18/17)
Opponents:	16 Cameron (12/19/19)
Individual:	8 - Ashton Duncan & (1/22/22) & (12/11/20), Bailey Haist (1/2/17)
Three Pointers Attempted:	
Lady Chaps:	44 vs Oklahoma City (12/10/15)
Opponents:	41 Whittier College (12/28/94)
Individual:	19 Burgundy Bass (1/18/90)
Three Pointer Percentage:	
Lady Chaps:	.667 (12-18) vs Western New Mexico (11/17/17)
Opponents:	.722 (13-18) Texas Woman's (3/4/23)
Free Throws Made:	
Lady Chaps:	40 vs Panhandle State (1/26/84)
Opponents:	38 St. Gregory's (2/2/02)
Individual:	15 Nicole Hampton (1/14/16)
Free Throws Attempted:	
Lady Chaps:	51 vs Panhandle State (2/11/93)
Opponents:	46 - 2 times
Individual:	17 Becky Hinojos (2/11/93), Mamy N'Kolomoni (3/1/02) and Nicole Hampton (1/14/16)
Free Throw Percentage:	
Lady Chaps:	1.000 (22-22) vs. Newman (2/15/18)
Opponents:	1.000 (21-21) St. Edward's (2/25/17)
Individual:	1.000 (14-14) Nicole Hampton (1/16/14)
Rebounds:	
Lady Chaps:	73 - 2 times (last: vs. Dallas Christian 12/31/09)
Opponents:	73 McMurry (1/23/82)
Individual:	20 Mamy N'Kolomoni (2/24/01)
Assists:	
Lady Chaps:	39 vs McMurry (1/17/89)
Opponents:	29 McMurry (1/11/88)
Individual:	13 Sierra Lovorn (2/10/07)
Steals:	
Lady Chaps:	38 vs McMurry (11/12/91)
Opponents:	27 St. Edwards (11/13/87)
Individual:	12 Tina Phillips (11/12/91)
Blocks:	
Lady Chaps:	17 vs. Okla. Panhandle St. (1/19/15) vs. Hardin-Simmons (2/19/91)
Individual:	10 Tess Bruffey - 3 times (12/13/14, 11/26/16, 2/9/17)
Turnovers:	
Lady Chaps:	40 vs. McMurry (2/23/80)
Opponents:	41 Howard Payne (11/12/90)

## RIP GRIFFIN CENTER RECORDS

## Lady Chap Team Records

<b>Points:</b>	113 vs Northern New Mexico (11/7/09)
<b>Field Goals:</b>	49 vs Dallas Christian (11/4/08)
<b>Field Goals Att.:</b>	91 vs Huston-Tillotson (11/17/00)
<b>Field Goal Pct.:</b>	.692 vs Eastern New Mexico (36-52) (11/29/14)
<b>3-Pointers:</b>	18 vs Oklahoma Panhandle State (2/18/17)
<b>3-Pointers Att.:</b>	44 vs Oklahoma City (12/10/15)
<b>3-Pointers Pct.:</b>	.667 vs USAO (2/28/08) .667 vs Texas - Permian Basin (2/21/15) .667 vs. Western New Mexico (11/17/17)
<b>Free Throws:</b>	35 vs Rogers State (1/19/12)
<b>Free Throw Att.:</b>	44 vs Oklahoma Baptist (2/1/03)
<b>Free Throw Pct.:</b>	1.000 vs Newman (22-22) (2/15/18)
<b>Rebounds:</b>	62 vs Huston-Tillotson (11/17/00)
<b>Assists:</b>	34 vs Dallas Christian (11/4/08)
<b>Blocked Shots:</b>	14 vs Mid-America Christian (11/24/14)
<b>Steals:</b>	26 vs National Christian (12/8/01)

## Lady Chap Individual Records

<b>Points:</b>	36 - Emily Pool (Atkins) vs Northern New Mexico College (11/5/10)
<b>Field Goals:</b>	13 - Mamy N'Kolomoni vs Huston-Tillotson (11/17/00)
<b>Field Goals Att.:</b>	22 - Cari Bigham vs UTPB
<b>Field Goal Pct. (10 attempts):</b>	.917 - Brittany Blackmon (11-12) vs Univ. of the Southwest (11/10/08)
<b>3-Pointers:</b>	8 - Ashton Duncan (twice) vs St. Mary's (1/22/22) & (12/11/20)
<b>3-Pointers Att.:</b>	13 - Ashton Duncan vs. St. Mary's (1/22/22)
<b>3-Point Pct. (5 attempts):</b>	1.000 - Kelsey Hoppel (5-5) vs Okla. Christian (2/8/14) 1.000 - Bailey Haist (5-5) vs. St. Edward's (2/19/15)
<b>Free Throws:</b>	13 - Grace Foster (11/5/23 vs. Adams State)
<b>Free Throws Att.:</b>	17 - Mamy N'Kolomoni vs Southern Nazarene (3/1/02)
<b>Free Throw Pct. (10 attempts):</b>	1.00 - Grace Foster (13-13) vs. Adams St. (11/5/23) 1.00 - Laynee Burr (12-12) vs. Midwestern St. (2/4/22) 1.00 - Tabitha Qubty-Sellers (10-10) vs Okla. Christian (1/18/01) 1.00 - Emily Pool (10-10) vs. Newman (11/23/13) 1.00 - Allie Schulte (10-10) vs. Daemen (11/20/21)
<b>Rebounds:</b>	20 - Mamy N'Kolomoni vs St. Gregory's (2/24/01)
<b>Assists:</b>	13 - Sierra Lovorn vs Oklahoma Baptist (2/10/07)
<b>Blocked Shots:</b>	10 - Tess Bruffey vs. St. Mary's (2/9/17)



RADIO / TV HEADSHOT ROSTER



**0 - GRACE FOSTER**  
Jr. | 6-1 | FW  
Childress, Texas



**1 - KENNEDY CHAPPELL**  
Fr.. | 5-9  
Heath, Texas



**2 - MACI MADDOX**  
Sr.. | 5-7  
Lubbock, Texas



**3 - AUDREY ROBERTSON**  
Sr. | 5-8 | G  
Kerrville, Texas



**4 - KIMBER MATHEWS**  
Fr. | 5-9 | G  
Gruver, Texas



**5 - TAYLOR ALLEN**  
Fr. | 5-9 | G  
Roscoe, Texas



**12 - TAYLOR THOMAS**  
So. | 5-9 | G  
Canyon, Texas



**15 - SHAYLEE STOVALL**  
Sr. | 5-6 | G  
Idalou, Texas



**22 - RYLEE VERDUIN**  
Fr. | 6-2 | FW  
Wylie, Texas



**23 - MARTIE MCCOY**  
So. | 5-11 | FW/G  
Muenster, Texas



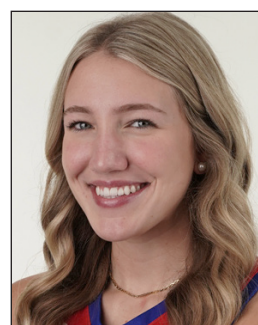
**30 - AUDREY SPURGIN**  
Jr. | 6-2 | P  
Fredericksburg, Texas



**31 - TIA JOHNSON**  
So. | 5-9 | FW/G  
Lubbock, Texas



**33 - DEJA JOHNSON**  
So. | 5-9 | FW/G  
Lubbock, Texas



**40 - REESE SCHUMANN**  
Jr. | 6-1 | P  
Houston, Texas



**STEVE GOMEZ**  
Head Coach  
21st Season



**LANDON GOMEZ**  
Assistant Coach  
1st Season



**KAYCIE WILSON**  
Assistant Coach  
9th Season



**JULIO PACHECO**  
Volunteer Assistant Coach  
4th Season



**COURTNEY BURGESS**  
Athletic Trainer  
1st Season