



LUBBOCK CHRISTIAN UNIVERSITY

2021-22 WOMEN'S BASKETBALL GAME NOTES

MEMBERS OF THE LONE STAR CONFERENCE - FIVE NCAA REGION TOURNAMENT APPEARANCES - 2015-16, 18-19 & 20-21 NCAA DIV. II CHAMPIONS

WOMEN'S BASKETBALL GAME NOTES November 25, 2021

LCU LADY CHAPARRALS

Location Lubbock, Texas
Founded 1957
Enrollment 2,000
Affiliation NCAA Div. II
Conference Lone Star
Nickname Lady Chaparrals "Lady Chaps"
Athletic Director Scott Larson
Sports Information Chris Due
Head Coach Steve Gomez
Career Record (year) 454-126 / 19th

2021-22 LADY CHAPS SCHEDULE

Date	Site	Opponent	Result
11/5	N	Montevallo !	W 69-55
11/6	A	Montana State Billings !	W 67-51
11/7	N	No.11 Tampa !	W 56-44
11/12	A	Colorado Christian ^	W 60-46
11/13	N	Colorado State Pueblo ^	L 56-64
11/19	H	No.1 Lander	W 76-72
11/20	H	No.20 Daemen College	W 62-37
11/25	N	Minnesota Crookston \$	6:00 PM
11/26	A	Hawaii Pacific \$	8:00 PM
12/7	H	West Texas A&M	6:00 PM
12/11	A	Western New Mexico	2:00 PM
12/16	H	Cameron	5:30 PM
12/31	A	Texas A&M - Kingsville *	2:00 PM
1/2	A	Texas A&M International *	1:00 PM
1/6	H	Arkansas Fort Smith *	5:30 PM
1/8	H	Oklahoma Christian *	2:00 PM
1/13	A	Texas A&M - Commerce *	5:30 PM
1/15	A	UT Tyler *	2:00 PM
1/20	H	St. Edward's *	5:30 PM
1/22	H	St. Mary's *	2:00 PM
1/27	A	Angelo State *	5:30 PM
1/29	A	UT Permian Basin *	2:00 PM
2/3	H	Midwestern State *	5:30 PM
2/5	H	Texas Woman's *	2:00 PM
2/10	A	West Texas A&M *	5:30 PM
2/12	A	Cameron *	2:00 PM
2/17	A	Eastern New Mexico	6:30 PM
2/22	H	Eastern New Mexico *	5:30 PM
2/24	H	Western New Mexico *	5:30 PM

* - Lone Star Conference Game Times are Central

! - D2CCA Tipoff Classic at The Trailhead (Billings, Mont.)
 ^ - RMAC/Lone Star Conference Tip-Off Classic (Lakewood, Colo.)
 \$ - Oahu Thanksgiving Classic (Honolulu, Hawaii)



LONE STAR CONFERENCE



FACEBOOK/LCUCAPS
 TWITTER: @LCUCAPS
 INSTAGRAM: @LCUCAPS
 YOUTUBE: #LCUathletics



vs. MINNESOTA CROOKSTON

Thu. Nov. 25 - 6 PM (CENTRAL)

OAHU THANKSGIVING CLASSIC >> SHARK TANK (HONOLULU)

LIVE SCORING: <https://hpusharks.com/sidearmstats/wball/summary> RADIO: N/A
 WATCH ONLINE: <https://bit.ly/32sVwvQ> LISTEN ONLINE: N/A

UMC RECORD: 0-4, 0-0 (NSIC) ALL-TIME SERIES: NO PRIOR MEETINGS
 UMC: HOME 0-0, ROAD 0-3, NEUTRAL 0-1 LAST MEETING: N/A
 RANKINGS: LAST WIN BY LCU: N/A
 N/A LAST WIN BY UMC: N/A



GAME
8

AT HAWAII PACIFIC

Fri. Nov. 26 - 8 PM (CENTRAL)

OAHU THANKSGIVING CLASSIC >> SHARK TANK (HONOLULU)

LIVE SCORING: <https://hpusharks.com/sidearmstats/wball/summary> RADIO: N/A
 WATCH ONLINE: <https://bit.ly/3FJ4e2> LISTEN ONLINE: N/A

HPU RECORD: 2-1, 0-0 (PacWest) ALL-TIME SERIES: LCU LEADS 1-0
 HPU: HOME 0-0, ROAD 1-1, NEUTRAL 1-0 LAST MEETING: 11/29/13 AT HPU (W 92-80)
 RANKINGS: LAST WIN BY LCU: 11/29/13
 N/A LAST WIN BY HPU: N/A



GAME
9

ALOHA Y'ALL

No.2 Lubbock Christian University is making their second appearance in the Oahu Thanksgiving Classic, as they are in Honolulu and playing a pair of games at Hawai'i Pacific's The Shark Tank. They open play on Thanksgiving Day (Thursday) at 6 p.m. (Central) facing Minnesota Crookston before concluding their Hawaiian stay Friday at 8 p.m. (Central) against Hawai'i Pacific. LCU first participated in the Oahu Thanksgiving Classic in 2013 and are 2-0 all-time in the event.

CHAP NOTES

>> Ashton Duncan leads LCU with 19 three-pointers, averaging 2.7 per game (second in the conference). The 19 three-pointers ranks seventh in the nation. Duncan, who has scored at least 10 points in six of LCU's seven games this season, is leading LCU averaging 13.0 points per game. Against No.20 Daemen (Saturday), Duncan notched her 205th career three-pointer, moving her into fourth in program history and past Haley Burton, who had 204 three-pointers from 2000-2005.
 >> Allie Schulte claimed consecutive Lone Star



LUBBOCK CHRISTIAN (@LCUCHAPS) LADY CHAPARRALS

Record: 6-1, 0-0 Lone Star
 Last Game: 62-37 W vs. No.20 Daemen
 Coach: Steve Gomez
 Gomez vs. UMC: 0-0
 Gomez vs. HPU: 1-0

PROJECTED STARTERS

Pos.	Player	Class	Pts/p	Reb/p
G	Ashton Duncan	Gr.	13.0	3.0
G	Allie Schulte	Gr.	12.9	4.3
G	Laynee Burr	Sr.	6.2	3.3
G	Channing Cunyus	Sr.	8.4	3.7
F	Juliana Robertson	Gr.	5.1	5.9

LCU LEADERS

AVG. POINTS
13.0 Ashton Duncan

REBOUNDS

5.9 (41) Juliana Robertson

ASSISTS

3.9 (27) Allie Schulte

STEALS

2.0 (14) Allie Schulte



MINNESOTA CROOKSTON (@UMNCROOKSTONATH) GOLDEN EAGLES

Record: 0-4, 0-0 NSIC
 Last Game: 65-57 L at Mich. Tech
 Coach: Mike Roysland
 Career Record: 131-271
 UMC Record: 131-271

PROJECTED STARTERS

Pos.	Player	Class	Pts/p	Reb/p
G	Kylie Post	Sr.	7.8	3.8
G	Emma Carpenter	Jr.	4.0	2.8
G	Jes Martens	So.	4.5	3.8
FW	Mary Burke	Sr.	9.5	5.0
C	Bren Fox	R-Jr.	8.5	5.8

UMC LEADERS

AVG. POINTS
9.5 Mary Burke

REBOUNDS

5.8 (23) Bren Foz

ASSISTS

2.3 (9) Emma Carpenter

STEALS

1.0 (4) J. Martens / M. Burke



HAWAII PACIFIC (@HPUHARKS) SHARKS

Record: 2-1, 0-0 PacWest
 Last Game: 69-60 W at Seattle Pacific
 Coach: Reid Takatsuka
 Career Record: 211-66
 HPU Record: 211-66

PROJECTED STARTERS

Pos.	Player	Class	Pts/p	Reb/p
G	Tavia Rowell	Jr.	19.3	7.0
G	Amy Baum	Sr.	14.7	5.3
G	Makaela Zeldenryk	Fr.	9.3	2.7
G	Avery Cargill	Jr.	10.3	4.0
F/G	Julia Razo	Gr.	10.0	5.0

HPU LEADERS

AVG. POINTS
19.3 Tavia Rowell

REBOUNDS

7.7 (23) Amy Baum

ASSISTS

5.3 (16) Amy Baum

STEALS

1.7 (5) T. Rowell / A. Baum

Conference Player of the Week honors, but for a first time on the offensive side, receiving Offensive Player of the Week. Schulte played a significant role for LCU in home wins over No. 1 Lander and No. 20 Daemen to extend the Lady Chaps Division II record home win streak to 93 games, as she led the team with 14.5 points per game on the week. In the win over top-ranked Lander, the Lady Chaps overcame a 10-point deficit in the final seven minutes at the free-throw line, hitting 30-of-31 (96.8%) as a team in the game. Schulte, a fifth-year member of the Lady Chaps from Nazareth, Texas, was successful on all 10 free throw attempts, matching an LCU Rip Griffin Center record. Schulte also helped LCU to a big win over Daemen, posting the final six points of the first quarter to spark a 15-2 run, which allowed the Lady Chaps to never trail in the contest. In addition to averaging 14.5 points per game, Schulte averaged a +15.5 plus/minus, with a +23 in their win over Daemen.

•> Laynee Burr, who has two performances of at least 18 points this season, is averaging 10.1 points per game to give LCU three players averaging double figures in scoring. A member of the DII CCA Tip-Off Classic at the Trailhead All-Tournament Team selection, Burr entered the week seventh in the conference in steals (10) and fourth in assists with 20 (61st nationally) on the season (2.9 per game).

•> LCU opened the season making their first 14 free-throw attempts and are 86.7% (111/128) from the free-throw line, which ranks fourth nationally. From their game against Tampa to their game at Colorado Christian, in which they made 13 consecutive free-throws to start the game, LCU made a sequence of 17 consecutive free-throws. They topped that mark Saturday, making 43 consecutive free-throws (28 straight from Friday's game against Lander carried into the sequence). Schulte is 35-of-36 (97.2%) from the free-throw line on the season, which is 25th nationally, but is the top mark in the nation by any player with a miss (24 players are shooting 100% based on NCAA minimum statistical requirements to qualify). Burr is seventh in the conference, shooting 85.7% from the line (18-of-21).

21-22 LADY CHAPS IN THE RANKINGS

	D2SIDA	WBCA
Preseason	1	1
Poll 1	10	No Poll
Poll 2	6	2
Poll 3	-	-
Poll 4	-	-
Poll 5	-	-
Poll 6	-	-
Poll 7	-	-
Poll 8	-	-
Poll 9	-	-
Poll 10	-	-
Poll 11	-	-
Poll 12	-	-
Poll 13	-	-
Poll 14	-	-
Poll 15	-	-
Final	-	-
Postseason	-	-

•> Grace Foster has been an impactful true freshman, claiming Lone Star Conference Defensive Player of the Week honors, as LCU swept the weekly honors. LCU held a pair of Elite Eight and nationally ranked programs to a combined 35.4 percent shooting and 54.5 points a game during their 2-0 week last week. Foster, from Childress, Texas, led LCU in rebounding on the week, with an average of 6.5 rebounds per game. She had eight rebounds and two blocks against Lander and followed with eight points, five rebounds and a steal against Daemen. She helped lead a defensive unit that held Daemen to 28.6 percent shooting from the floor. Foster is leading the team in blocks (5) and averaging 4.6 rebounds per game. Foster is averaging 7.4 points a game over the prior five games, which includes a 10-point performance over No.11 Tampa for her first career double-digit outing. She led LCU with eight rebounds against No.1 Lander.

•> LCU is 15th nationally in turnovers...or lack thereof, as they average 12.4 per game. The stat has Allie Schulte ranking sixth in the LSC in assist/turnover ratio at 1.80.

THANKSGIVING THROWBACK

The last time LCU played on Thanksgiving Day was ironically in Hawai'i in 2013, as LCU defeated BYU-Hawai'i 75-48 in Honolulu.

EYE-OPENING

The 2021-22 season marks LCU's ninth since leaving the NAIA, and heading into Thursday's action, LCU is 220-30 in that span (88.0%). In NCAA postseason play, the Lady Chaps are 20-1 all-time.

NATIONALLY KNOWN

For the first time in program history, LCU claimed the No.1 spot in the WBCA's National Top-25 Preseason Poll, and for the first time they were the favorites in both the WBCA and D2SIDA preseason polls. LCU fell to CSU Pueblo in Lakewood, Colo., which ended their 39-game win streak and knocked them out of the No.1 spot. Heading into this week's play, LCU is No.2 in the WBCA Top-25 poll and No.6 in the D2SIDA Top-25 poll.

SO ARE SOME OTHERS

Saturday, LCU defeated No.20 Daemen, marking their third game of the season against nationally ranked programs. LCU went 6-0 against nationally ranked programs last season and 4-2 in 2019-20 against the nations ranked foes. This season, LCU is 3-0 against ranked opponents, as they have also defeated No.11 Tampa (Nov. 7 in Billings, Mont.) and No.1 Lander (Nov. 19 in Lubbock).

SWEET HOME (ON) CHICAGO

LCU went 13-0 at home season, culminating

LADY CHAPS HISTORY

NCAA NATIONAL CHAMPIONSHIPS
2016 2019 2021

NCAA TOURNAMENT APPEARANCES
2016 2018 2019 2020 2021

NCAA DIV. II SOUTH CENTRAL REGION
TOURNAMENT CHAMPIONS
2016 2018 2019 2021

LONE STAR CONFERENCE
CHAMPIONS
2020 (Won Tournament) 2021 (Regular Season)

LONE STAR CONFERENCE
DIVISION CHAMPIONS
2021 (West)

HEARTLAND CONFERENCE
2013/2014 First Place
2014/2015 Regular Season Champions
2015/2016 Regular Season Champions
2017/2018 Regular Season Champions
2018/2019 Regular Season Champions

HEARTLAND CONFERENCE
TOURNAMENT CHAMPIONS
2016 2018 2019

SAC CONFERENCE CHAMPIONS
2006/2007
2011/2012

SAC TOURNAMENT CHAMPIONS
2013

NAIA NATIONAL QUALIFIERS
2004 2009
2005 2010
2006 2011
2007 2012
2008 2013

NAIA SWEET SIXTEEN FINISH
2007
2009

NAIA ELITE EIGHT FINISH
2008
2011
2013

NAIA FAB FOUR SEMIFINALISTS
2012

NAIA NATIONAL FINALIST
2006

with the LSC Championships and becoming the first team since 2007 to win the LSC Championship tournament on a campus venue. They are 2-0 at home this season, which has their active home win streak sitting at 93 games, which is the active and all-time leading mark in NCAA Division II women's basketball. LCU's last home loss came on Jan. 1, 2015 against Oklahoma City University. LCU, who also has a 7-0 mark in NCAA postseason play in Lubbock in the mix (not including a 3-0 mark in LSC postseason play), has also won 74 consecutive home conference games, with their last conference home loss occurring Jan. 10, 2013 (against Oklahoma City). They completed a 49-0 all-time mark in Heartland Conference home games (they are 21-0 in LSC home games).

NCAA DIVISION II'S LONGEST HOME WIN STREAKS

93 - Lubbock Christian Jan. 1, 2015 -->

87 - Neb.-Kearney Jan. 31, 1995-Nov. 24, 2001

85 - West Tex. A&M Jan. 9, 1987-Dec. 6, 1991

NCAA'S ACTIVE-LEADING HOME WIN STREAKS

93 – LCU (Division II)

41 – North Georgia (Division II)

39 – Messiah (Division III)

FIVE THINGS ABOUT UMC

1 > The Golden Eagles are based in Crookston, Minn. (in the Grand Forks, N.D. metro area) and are members of the North Sun Intercollegiate Conference. After a 3-13 season last season, the Golden Eagles are preseason picked tied for 15th (last) in the Northern Sun Preseason Poll.

2 > UMC ended a 0-4 start to the season Wednesday by defeating Chaminade 56-32 for their first win of the season. Bren Fox had 17 points and 14 rebounds for a double-double in the win.

3 > LCU will mark UMC's third nationally ranked opponent this season. UMC, who battled Minnesota and North Dakota in exhibition games, lost 74-58 to No.15 Nebraska-Kearney and 65-57 to No.16 Michigan Tech.

4 > UMC is playing their first six games away from home. Their home opener is Dec. 2 against St. Cloud State.

5 > Crookston holds opponents to a 34.9% shooting percentage from the field and 26.4% from long range.

THE SERIES AGAINST UMC

LCU and Minnesota Crookston are meeting for the first time all-time. LCU is 1-0 all-time against Minnesota based programs. On Dec. 29, 1994, LCU defeated Minnesota Morris 70-68 in Colorado Springs, Colo.

FIVE THINGS ABOUT HPU

1 > The Sharks are members of the PacWest and were regional qualifiers last season. They went 13-1 on the season before falling in the West Region opening game to Azusa Pacific. The Sharks are preseason picked second in the PacWest Preseason Poll.

2 > HPU opened the Oahu Thanksgiving Classic with a 68-55 win over Black Hills State Wednesday. Tavia Rowell led all scorers with 29 points.

3 > Hawai'i Pacific leads the PacWest and ranks second nationally with a low of 9.7 turnovers per game. They are 15th nationally in assist/turnover ratio, with a mark of 1.24.

4 > Julia Razo is 10-of-10 from the line this season and is one of 24 players eligible in NCAA statistics at 1.000 on the season.

5 > Amy Baum ranks 25th nationally with 2.29 assists per game on the season.

THE SERIES AGAINST HPU

LCU is 1-0 all-time against HPU. On Nov. 29, 2013, LCU defeated HPU 92-80 in the Oahu Thanksgiving Classic.

PRIOR MEETING VS. HPU

HONOLULU, Hawai'i (November 29, 2013) – Nicole Hampton scored 17 points in the second half to match a career high with 29 points and she was one of five Lady Chaparrals in double figures, as Lubbock Christian University closed play in the Oahu Classic with a 92-80 win over Hawai'i Pacific University at McKinley High School Gymnasium.

The contest was played at a high rate of energy, but it took a while for the offense to get jumpstarted in the game.

GAME-BY-GAME RESULTS AND HIGHS

Opponent	Date	Score	Points	Rebounds	Assists	Steals	Blocked shots
vs Montevallo	11/05/21	69-55	19-Allie Schulte	9-Grace Foster	6-Laynee Burr	4-Laynee Burr	2-Grace Foster
at Mont. St. Billings	11/06/21	67-61	22-Ashton Duncan	7-Allie Schulte	3-Allie Schulte Laynee Burr	3-Channing Cunyus	1-Juliana Robertson
vs Tampa	11/07/21	56-44	18-Laynee Burr	7-Juliana Robertson	4-Allie Schulte	3-Allie Schulte	1-Grace Foster Allie Schulte
at Colo. Christian	11/12/21	60-46	19-Laynee Burr	8-Channing Cunyus Juliana Robertson	3-Allie Schulte Laynee Burr	5-Allie Schulte	1-Audrey Robertson Whitney Cox Allie Schulte
vs Colorado St.-Pueblo	11/13/21	56-64	20-Ashton Duncan	6-Allie Schulte	8-Allie Schulte	3-Juliana Robertson	1-Laynee Burr Channing Cunyus Juliana Robertson 2-Grace Foster
LANDER	11/19/21	76-72	12-Allie Schulte Audrey Robertson	8-Grace Foster	5-Laynee Burr	1-Allie Schulte Audrey Robertson Maci Maddox Channing Cunyus	
DAEMEN	11/20/21	62-37	17-Allie Schulte	7-Juliana Robertson	2-Savannah Sumrall Channing Cunyus Grace Foster Allie Schulte	1-Ashton Duncan Grace Foster Channing Cunyus Maci Maddox Carli Bostwick Savannah Sumrall Whitney Cox Laynee Burr	1-Juliana Robertson

The Sharks did not score their first field goal until over three minutes into the game, but when they did, it was on a 5-0 run to take a 5-4 lead 3:36 into the contest. LCU would not trail long, as a deep three-point shot attempt was made by Emily Pool to start a 5-0 run of their own. With under eight minutes remaining in the half, Kaycie Boyles would knock down a pair of free-throws and a field goal to impact an 8-0 run for a 35-22 lead. The Lady Chaps would score their final five points over the final two minutes of the first half from the free-throw line and they led 47-38 at the half. Hampton was 4-of-6 from the field to lead all scorers with 12 points in the half.

The second half was evenly played, with neither team controlling the momentum. A three-pointer by Shianne Solomon cut the HPU deficit to 49-41 2:16 into the half, but it would be the only time HPU would cut the deficit to single digits in the half. Pool answered with a lay-up eight seconds later. LCU led as much as 63-48 (12:20 remaining) and the deficit never slipped under 10 the rest of the way. LCU was 60.7% (17/28) from the field in the second half, with Hampton knocking down 7-of-9 attempts for her 17 points in the half. Skye Savini, who was held to two points in the first half, kept HPU in the hunt with 16 points in the half.

Haley Burton, Boyles and Kelsey Hoppel each had 15 points and Pool added 13 points for LCU. Boyles also led all players in rebounds with nine. Hampton added seven assists with her high-scoring mark. LCU was 52.5% (32/61) from the field and 62.1% (23/37) inside the perimeter in the contest. They led the rebounding battle 45-36. Savini had 18 points to lead HPU.

2021-2022 LCU ROSTER

No.	Name	Pos.	Ht.	Cl.	Yrs.Left	Hometown School	High School
0	Grace Foster	FW	6-1	Fr.	4	Childress, Texas	Childress H.S.
1	Ashton Duncan	G	5-9	Gr.	1	Lubbock, Texas	Trinity Christian H.S.
2	Maci Maddox	G	5-7	So.	4	Lubbock, Texas	Frenship HS
3	Audrey Robertson	G	5-8	So.	4	Kerrville, Texas	Tivy HS
4	Rachel Haase	G	5-8	Fr.	4	Amarillo, Texas	Amarillo H.S.
5	Laynee Burr	G	5-9	Sr.	2	Stratford, Texas	Stratford H.S.
12	Savannah Sumrall	G	5-9	Jr.	3	Wellington, Texas	Wellington H.S.
14	Channing Cunyus	G	5-9	Sr.	2	Canyon, Texas	Canyon H.S.
15	Shaylee Stovall	G	5-6	So.	4	Idalou, Texas	Idalou HS
20	Carli Bostwick	FW/G	5-9	Fr.	4	Lubbock, Texas	Homeschool
21	Allie Schulte	G	5-10	Gr.	1	Nazareth, Texas	Nazareth H.S.
22	Juliana Robertson	FW	5-10	Gr.	1	Kerrville, Texas	Tivy H.S.
23	Brylee Winfrey	G	5-9	Jr.	3	Canyon, Texas	Canyon H.S.
30	Audrey Spurgin	P	6-1	Fr.	4	Fredericksburg, Texas	Fredericksburg H.S.
34	Whitney Cox	FW	6-1	Jr.	3	Flower Mound, Texas	Flower Mound H.S.
40	Reese Schumann	P	6-2	Fr.	4	Houston, Texas	Clear Lake H.S.

Head Coach: Steve Gomez

Assistant Coaches: Vic Self, Kaycie Wilson, Julio Pacheco

**PRONUNCIATIONS**

HAASE: haw-SEE (like "Aussie" but add the "H" sound prior)
 SUMRALL: sum-rah-l
 CUNYUS: kunn-yuss
 STOVALL: stoe-VAHL
 BOSTWICK: BOSS-twick
 SCHULTE: shuhl-tee
 SPURGIN: spur-JEN
 SCHUMANN: shewman

GEO PRONUNCIATIONS

IDALOU: EYE-da-LOO
 TIVY: tie-vee
 VEGA: VAYga

CHAPS: shhapps (not CH-apps)

NCAA DIVISION II POLLS

**WBCA DIV.II TOP 25 (11/23/21)**

Rank	School	Pts	Prev.	1st
1	Fort Hays State (4-0)	522	4	14
2	Lubbock Christian (6-1)	492	1	7
3	Drury (6-1)	469	2	0
4	North Georgia (5-0)	454	6	1
5	Lander (3-1)	436	3	0
6	Ashland (3-0)	425	8	0
7	Texas A&M-Commerce (3-0)	422	10	0
8	Gannon (2-0)	378	9	0
9	Alaska Anchorage (3-0)	361	12	0
10	Glenville State (3-0)	330	14	0
11	Azusa Pacific (4-1)	283	5	0
12	Indiana, PA (4-0)	183	29	0
13	Western Washington (2-0)	180	31	0
14t	Minnesota Duluth (2-1)	176	18	0
14t	Tampa (5-2)	176	11	0
16t	Bentley (2-0)	165	22	0
16t	Union, TN (2-1)	165	19	0
18	Grand Valley State (3-0)	163	34	0
19	Carson-Newman (3-1)	145	21	0
20	Lee, TN (4-0)	138	37	0
21	Barton (3-0)	111	33	0
22	Tuskegee (2-0)	101	32	0
23	Valdosta State (2-1)	94	15	0
24	Colorado Mines (3-1)	75	23	0
25	Central Missouri (3-3)	72	6	0

Dropped out: SW Okla. State (3-2); Stonehill (6-1); Charleston, WV (3-1); Hawaii Pacific (2-1); Truman St. (2-2); Belmont Abbey (2-1); Doornen (2-2).
Others receiving votes: Michigan Tech (3-1); 14; Nebraska Kearney (3-1); 15; Southwestern Oklahoma State (3-2); 33; Dominican, WV (5-0); 46; Arkansas Tech (2-0); 44; Cameron (4-1); 35; Augusta, SD (2-0); 31; Stonehill (6-1); 25; Clayton State (4-0); 24; Charleston, WV (3-1); 22; CSU Pueblo (2-1); 16; Emporia State (3-1); 18; Southern Nazarene (4-0); 19; University of the Sciences (2-0); 18; Cal State San Marcos (2-1); 14; Catawba (4-0); 14; Hawaii Pacific (2-1); 14; Saint Cloud State (1-1); 14; Colorado Mesa (3-0); 13; Wayne State, MI (3-0); 13; Truman State (2-2); 12; Fayetteville State (2-1); 8; Concordia Irvine (3-0); 5; Le Moyne, NY (2-0); 4.

**D2SIDA DIV.II TOP 25 (11/23/21)**

Rank	School	Rec	Pts	Prev.
1	Alaska-Anchorage (10)	3-0	381	2
2	Fort Hays State (2)	4-0	364	4
3	Drury (1)	6-1	361	3
4	Texas A&M-Commerce	3-0	343	6
5	Lander (1)	3-1	324	1
6	Lubbock Christian	6-1	320	10
7	North Georgia (1)	5-0	314	5
8	Lee (1)	4-0	278	12
9	Ashland	3-0	275	11
10	Gannon	2-0	269	13
11	Indiana (Pa.)	4-0	239	9
12	Bentley	2-0	199	RV
13	Western Washington	3-0	191	RV
14	Catawba	4-0	184	20
15	Colorado Mesa	3-0	152	24t
16	Southwestern Oklahoma State	3-2	150	21t
17	Grand Valley State	3-0	131	RV
18	Glenville State	3-0	129	23
19	Azusa Pacific	4-1	112	7
20	Tampa	5-2	103	24t
21	Minnesota-Duluth	2-1	83	15
22	Colorado School of Mines	3-1	70	8
23	USciences	2-0	61	RV
24	Union (Tenn.)	2-1	37	NR
25	Dominican (N.Y.)	5-0	33	NR

RV: California (Pa.) 26, Michigan Tech 23, Saint Martin's 15, Arkansas Tech 10, Carson-Newman 10, Colorado State-Pueblo 5, Nebraska-Kearney 3, Shepherd 3, Barry 1, Barton 1
 DO: Stonehill, Michigan Tech, Valdosta State, Saint Anselm, Cal State-San Marcos, Kentucky Wesleyan, Central Missouri

**NCAA SOUTH CENTRAL REGIONAL RANKINGS**

Rank School vs. D2 rec. In-Region

**D2SIDA SOUTH CENTRAL REGION POLL**

Rank	School (First-Place Votes)	W-L	Pts.	Prev.
1	Texas A&M-Commerce (5)	3-0	59	1
2	Lubbock Christian (1)	6-1	53	3
3	Colorado Mesa	3-0	52	4
4	Colorado School of Mines	3-1	42	2
5	Colorado State-Pueblo	2-1	38	6
6	Cameron	4-1	36	5
7	Eastern New Mexico	3-1	13	RV
8	Midwestern State	2-1	11	7
9t	Texas Woman's	3-1	8	10
9t	Westminster	1-1	8	RV

WEBSITE & BROADCAST PARTNERS

ON THE NET - WWW.LCUCHAPS.COM

The official website of LCU Athletics is where you can find everything relating to the LCU basketball teams. Schedules, results, rosters, bios, statistics and game notes can be found there.

ON THE AIR

Each game will be broadcast on the LSC Digital Network as an option for fans unable to attend. The LSC Digital Network will offer season passes for basketball, giving fans access to all regular-season contests on the network for that sport. In addition, viewers will continue to have the option to purchase a \$10 day pass that provides access to all broadcasts aired that day and access to all archived content for 24 hours.

2021-22 LSC Digital Network Rates

24-Hour Day Pass:	\$10.00
Men's and Women's Basketball Season Pass:	\$75.00
Archive Download:	\$10 per broadcast

The LSC Digital Network is in its third year showcasing the academic and athletic events of the league and its 18 member institutions. Fans can watch games and purchase passes online at www.lonestarconferencenetwork.com or www.lcuchaps.com live on computer and mobile devices. Viewers can also tune in to games on the LSC Digital Network via OTT apps available on Apple TV, Amazon Fire TV, Android TV and Roku by searching for "LSC Digital Network."

**DIGITAL NETWORK**

HEAD COACH STEVE GOMEZ

AT LCU: 19th Season (454-126)
OVERALL: 19th Season (454-126)

PERSONAL

HOMETOWN: Lubbock, Texas
SPOUSE: Shawna
CHILDREN: Hayden, Landon

EDUCATION

Lubbock Christian / 1988

COACHING EXPERIENCE

Lubbock Cooper High School (7 seasons)
LCU (19th season)



In 10 seasons at the helm while an NAIA institution, the Lady Chaps made 10 consecutive trips to the NAIA Division I Women's Basketball National Championship tournament. Coach Gomez's arrival to the LCU women's basketball program certainly changed the foundation of the program. In those 10 seasons at the helm, LCU posted a 234-96 record under Gomez in the NAIA.

LCU jumped into NCAA Division II transition in 2013 (membership in 2015) and the results have not changed since transitioning. LCU went a remarkable 25-1 overall in 2013-2014 and they completed the Heartland Conference with a perfect 20-0 mark for their first perfect conference record in program history. They followed in 2014-2015 claiming Co-Heartland Conference Regular Season title honors after a 15-3 stretch in conference and a 21-7 overall season. That led to an astounding 2015-2016 season. A season that started off with an exhibition game loss at NCAA Div. I No. 1 Connecticut and ended with a perfect 35-0 season in LCU's first season eligible for NCAA postseason. They went 18-0 in Heartland Conference play to capture a regular season title and then a Heartland Conference Tournament title (first season eligible for the tournament). The Lady Chaps went on to capture a South Central Regional Tournament title and eventually a NCAA Div. II National Title. Gomez claimed WBCA NCAA Div. II National Coach of the Year honors and also spent a portion of the offseason as a court coach at the 2016 USA Basketball Women's U17 World Championship Team Trials in Colorado Springs, Colo.

2016-17 served as a rebuilding year for the Lady Chaps, who returned one starter off the championship squad. Despite the rebuilding, LCU still went 19-11 overall and 12-4 in conference, en route to the Heartland Conference Tournament championship game, which they lost to St. Edward's. They bounced back in 2017-18, claiming another Heartland Conference regular season and tournament title, leading to Gomez receiving Heartland Conference Coach of the Year honors. The Lady Chaps hosted the NCAA Division II South Central Region Tournament for a second time and won the tournament to stamp their second berth towards an NCAA Division II Elite Eight Tournament loss. They lost to eventual national champion Central Missouri at the tournament held in Sioux Falls, S.D., ending their season with a 31-2 record.

The Lady Chaps returned to the Elite Eight Tournament for the third year in a four-year span in the 2018-19 season after claiming a Heartland Conference regular season and tournament title, along with a NCAA Division II South Central Region tournament championship after wins at Colorado Mesa and at home over Angelo State. LCU made an outstanding run towards their second NCAA Division II National Title, defeating Southwestern Oklahoma State in double overtime to claim the trophy. Gomez, who picked up his third Heartland Coach of the Year honor, became the seventh head coach in NCAA Division II women's basketball history to claim multiple titles. He also was named Female Team Coach of the Year at the West Texas Sports Persons of the Year Banquet following the season.

LCU's title defense was rudely interrupted by the COVID Pandemic in 2019-20. LCU was 28-3 and claimed the Lone Star Conference Championship during their first season in the conference. LCU was chosen to host the NCAA Division II South Central Regionals for a third time, but the COVID shutdown halted the remainder of the season less than 24 hours prior to the first tournament game.

COVID went from being a wall to a hurdle in 2020-21, and one the Lady Chaps would be able to jump over. Through many cancellations and unknowns, LCU claimed a Lone Star Conference title and went to Canyon, Texas, where they claimed a NCAA Division II South Central title and a berth to another NCAA Elite Eight Tournament in Columbus, Ohio. It was there, LCU would claim their third national title, with wins over Daemen, Central Missouri and Drury to complete a 23-0 perfect season. They were the first NCAA Division II program to complete two undefeated seasons.

In 18 seasons at LCU (the 2020-21 season marks his 19th), Gomez enters the 2020-2021 season with a 448-125 collegiate coaching record. The 2021-22 season marks LCU's ninth since leaving the NAIA and LCU is 214-29 in that span (88.1%).

In their final two seasons in the NAIA (2011-2012, 2012-2013), LCU set program single-season win records in each of the seasons. The Lady Chaps went 31-4 in 2013-2014, setting a program single-season wins mark (31). The Lady Chaps won their first ever Sooner Athletic Conference Tournament title en route to their final trip to the NAIA National Championship tournament. In 2011-2012, LCU went 28-6 and made their second ever appearance in the Semifinals of the NAIA National Championship Tournament. They lost out to eventual national champions Oklahoma City to mark the second consecutive season in which they lost out to the team who would claim the title. LCU claimed their second Sooner Athletic Conference crown in program history, as they joined Oklahoma City as conference co-champions with a 21-1 record. They handed OCU their only loss of the season.

LCU went 25-10 in 2010-2011 and marched into the Elite Eight for a third time in program history. The Lady Chaps, who finished third in the Sooner Athletic Conference, lost in the NAIA National Championship to eventual national champion Azusa Pacific.

LCU went 19-12 in the 2009-2010 season, which included a 13-9 finish in the Sooner Athletic Conference, and had their season come to an end in the National Tournament. The highlight of the season was an exhibition victory inside the United Spirit Arena against Texas Tech University.

In 2009-2010, the Lady Chaps finished with a solid 27-7 record and made a trip to the Sweet Sixteen of the National Tournament following a second-place Sooner Athletic Conference season. Gomez chalked up a milestone during the season, becoming the all-time women's basketball wins leader at LCU.

LCU had a memorable 2007-2008 campaign, as the Lady Chaps made another voyage to the NAIA National Tournament. The Lady Chaps completed a 25-10 season, which included a trip to the Elite Eight in the tournament for their second best finish in program history.

In 2006-2007, Gomez led the Lady Chaps to a myriad of firsts in their near thirty year history. Lubbock Christian never left the top-10 in the NAIA National Poll, and set a school mark for wins in a season with 26, eclipsing the school mark of 23 they set the prior season. In addition, LCU made its fourth consecutive trip to the NAIA National Tournament, finishing in the Sweet Sixteen and most impressively, the Lady Chaps captured a share of the Sooner Athletic Conference regular season championship, becoming the first school from outside of the State of Oklahoma to do so in the thirty-one years since the conference was founded.

In 2005-2006, Gomez's Lady Chaps enjoyed what was arguably at the time the best season in school history, as they finished with an overall record of 23-12, and made an unparalleled run at the NAIA National Tournament. Seeded sixth in their eight team bracket in the tournament, Gomez's girls proceeded to oust four of the top six teams in the nation and become the lowest seed ever to reach either the Fab Four or National Championship; appropriately enough, he was named the SAC's Coach of the Year.

In his first season, Gomez's Lady Chaps went 16-14 and finished fifth in the Sooner Athletic Conference. While this might appear to be an average year, big wins for the Lady Chaps and entry into the NAIA National Poll for the first time proved good enough for an at-large bid to the NAIA National Tournament. LCU women's first trip to the big dance. In his second season, the Lady Chaps were able to maintain that level of success. After getting off to the best conference start since joining the Sooner Athletic Conference at 6-2, LCU finished SAC play at 10-8, good enough for another fifth place finish, and for the second season in a row, Coach Gomez guided the Lady Chaps to the NAIA National Tournament.

An LCU graduate, Gomez was a standout perimeter player for Coach John Copeland in the late 1980s, and to this day, he still holds the school record for career free throw percentage at .855. He graduated in 1988 with a Bachelor's of Science Degree in Mathematics and consistently used his degree to teach in the classroom while pursuing coaching on the sidelines. Gomez's career began at Lubbock Christian High School where he served as an assistant coach in the men's basketball program from 1988 to 1995. In 1996, Gomez accepted the men's basketball head coaching position at Lubbock Cooper High School, where he remained until returning to Lubbock Christian University to take over the reigns of the Lady Chaps in 2003. During his seven seasons at Cooper, the basketball program broke new ground making the playoffs four times, managing the school's first state ranking, and capturing the Pirates only district championship in Gomez's final season. One of the main reasons Coach Gomez is so successful on the court is the support he receives off of it. Steve has been married to his wife Shawna for 31 years, and the couple has two sons: Hayden and Landon.



VIC SELF ASSISTANT COACH

Self is a longtime familiar face to basketball among the South Plains. He spent 25 years coaching basketball at Lubbock's Monterey High School and 20 spent as the head coach of the Plainsmen boys' basketball team. Self is no stranger to LCU. The Portales, New Mexico native lettered in basketball and tennis at Lubbock Christian in 1980-1981, after spending two years at Eastern New Mexico University. His first coaching job was as an assistant coach for John Copeland on the Chaps basketball staff. In two decades at Monterey, Self compiled a 416-237 record, four district titles and 13 playoff appearances. Monterey even made a trip to the regional tournament. He rejoins Gomez, but in a reversal of roles. Gomez served as an assistant for Self from 1988-1996. Self resigned from coaching basketball in 2008, but continued to coach boy's golf at Monterey until retiring in 2011. Self has been on staff for all three of LCU's national titles.

ern New Mexico University. His first coaching job was as an assistant coach for John Copeland on the Chaps basketball staff. In two decades at Monterey, Self compiled a 416-237 record, four district titles and 13 playoff appearances. Monterey even made a trip to the regional tournament. He rejoins Gomez, but in a reversal of roles. Gomez served as an assistant for Self from 1988-1996. Self resigned from coaching basketball in 2008, but continued to coach boy's golf at Monterey until retiring in 2011. Self has been on staff for all three of LCU's national titles.



KAYCIE WILSON - ASSISTANT COACH

Kaycie joined the LCU women's basketball coaching staff in the 2014-15 season as a graduate assistant through the 2015-16 season. She has played an integral role in the coaching staff for all three NCAA national championships. She spent her senior season (2013-14) playing in the interior of LCU's first season in the Heartland Conference, which went 20-0 in conference for a regular season first place finish. She spent three seasons (09/10 - 11/12) at NCAA Div. I Missouri-Kansas City, where she combined to average 4.9 points and 3.9 rebounds in 87 games. The forward also combined for 44 steals, 95 assists and 34 blocks for UMKC (21 blocks as a sophomore). Boyles was a multiple recipient on The Summit League Winter/Spring Academic All-League Team and the Commissioner's List of Academic Excellence as a distinguished scholar. She is a Lubbock native and a product of Coronado High School, where she was rated the No.45 best forward in the nation by Collegiate Girls Basketball Report and the No.55 best player in Texas by Premier Basketball Report. The multi-winning All-State recipient was named the Girls Basketball Player of the Year by the Lubbock Avalanche Journal, as well as the 2009 5A-4A All-South Plains Player of the Year after 17.6 points and 7.9 rebounds a game.



LONE STAR CONFERENCE

THIS WEEK'S GAMES

Thursday, November 25

Saint Martin's at Texas A&M International
Lubbock Christian vs. Minnesota Crookston (Honolulu, Hawaii)

Friday, November 26

Harding at Angelo State
Texas Woman's vs Arkansas Tech (San Angelo, Texas)
Texas A&M-Kingsville vs Minnesota State (San Antonio, Texas)
Fort Lewis at West Texas A&M
UT Permian Basin at Colorado Christian
East Central at St. Mary's
Western Oregon at Texas A&M International
Lubbock Christian at Hawaii Pacific

Saturday, November 26

Texas Woman's at Harding (San Angelo, Texas)
Texas A&M-Kingsville vs East Central (San Antonio, Texas)
Southeastern Oklahoma at Oklahoma Christian
St. Edward's at Saint Leo
Oklahoma Baptist at Cameron
Western Colorado at West Texas A&M
UT Permian Basin vs Regis (Colorado Springs, Colo.)
Minnesota State at St. Mary's
Arkansas-Monticello at Texas A&M-Commerce
Arkansas Tech at Angelo State
UT Tyler vs Northeastern State (Commerce, Texas)

Saturday, November 26

UT Tyler at Arkansas-Monticello (Commerce, Texas)
Texas Wesleyan at Midwestern State
Northeastern State at Texas A&M-Commerce

LSC PLAYERS OF THE WEEK

Date	Offensive	Defensive	LCU
11/15	Maighan Hedge	CU	Allie Schulte
11/22	Allie Schulte	LCU	Grace Foster

PRESEASON POLL

School	1st	Total Points
1. Lubbock Christian	40	741
2. Texas A&M-Commerce	3	674
3. West Texas A&M		647
4. Cameron		590
5. Midwestern State		560
6. Texas A&M International		490
7. St. Mary's		411
8. Oklahoma Christian		397
9. St. Edward's		384
10. Texas A&M-Kingsville		368
11. Texas Woman's		309
12. UT Permian Basin		249
13. Eastern New Mexico		241
14. UAFS		228
15. Angelo State		194
16. UT Tyler	1	132
17. Western New Mexico		117

2021-22 LONE STAR CONFERENCE STANDINGS

School	DIV	DPct.	CONF.	CPct.	Overall	Pct.	Strk	Home	Away	Neutral
Texas A&M-Commerce	0-0	0.000	4-0	1.000	W4	0-0	3-0	1-0		
Western New Mexico	0-0	0.000	3-0	1.000	W3	3-0	0-0	0-0		
Texas A&M International	0-0	0.000	2-0	1.000	W2	2-0	0-0	0-0		
Lubbock Christian	0-0	0.000	6-1	0.857	W2	2-0	2-0	2-1		
Eastern New Mexico	0-0	0.000	3-1	0.750	L1	0-0	1-1	2-0		
Texas Woman's	0-0	0.000	3-1	0.750	W1	2-1	1-0	0-0		
Texas A&M-Kingsville	0-0	0.000	3-1	0.750	W2	2-0	1-1	0-0		
UT Tyler	0-0	0.000	2-1	0.667	W1	2-1	0-0	0-0		
Cameron	0-0	0.000	4-3	0.571	L3	3-2	0-1	1-0		
Midwestern State	0-0	0.000	2-2	0.500	L2	2-0	0-2	0-0		
St. Edward's	0-0	0.000	2-2	0.500	W2	2-0	0-1	0-1		
West Texas A&M	0-0	0.000	2-5	0.286	L3	2-3	0-1	0-1		
UAFS	0-0	0.000	1-3	0.250	L3	0-2	1-1	0-0		
UT Permian Basin	0-0	0.000	1-3	0.250	L2	0-0	0-2	1-1		
Angelo State	0-0	0.000	0-4	0.000	L4	0-0	0-0	0-4		
Oklahoma Christian	0-0	0.000	0-2	0.000	L2	0-1	0-1	0-0		
St. Mary's	0-0	0.000	0-5	0.000	L5	0-1	0-1	0-3		

OFFENSIVE RANKINGS

Team	G	W-L	PTS	AVG/G
1. Cameron	7	4-3	572	81.7
2. Texas A&M International	2	2-0	159	79.5
3. Texas A&M-Commerce	4	4-0	297	74.3
4. UT Tyler	3	2-1	222	74.0
5. Midwestern State	4	2-2	282	70.5
6. Oklahoma Christian	2	0-2	136	68.0
7. West Texas A&M	7	2-5	465	66.4
8. Texas Woman's	4	3-1	263	65.8
9. Lubbock Christian	7	6-1	446	63.7
10. Eastern New Mexico	4	3-1	253	63.3
11. St. Edward's	4	2-2	252	63.0
12. Western New Mexico	3	3-0	188	62.7
13. UT Permian Basin	4	1-3	237	59.3
14. Texas A&M-Kingsville	4	3-1	227	56.8
15. UAFS	4	1-3	224	56.0
16. St. Mary's	5	0-5	279	55.8
17. Angelo State	4	0-4	200	50.0

DEFENSIVE RANKINGS

Team	G	W-L	PTS	AVG/G
1. Cameron	7	4-3	572	81.7
2. Texas A&M International	2	2-0	159	79.5
3. Texas A&M-Commerce	4	4-0	297	74.3
4. UT Tyler	3	2-1	222	74.0
5. Midwestern State	4	2-2	282	70.5
6. Oklahoma Christian	2	0-2	136	68.0
7. West Texas A&M	7	2-5	465	66.4
8. Texas Woman's	4	3-1	263	65.8
9. Lubbock Christian	7	6-1	446	63.7
10. Eastern New Mexico	4	3-1	253	63.3
11. St. Edward's	4	2-2	252	63.0
12. Western New Mexico	3	3-0	188	62.7
13. UT Permian Basin	4	1-3	237	59.3
14. Texas A&M-Kingsville	4	3-1	227	56.8
15. UAFS	4	1-3	224	56.0
16. St. Mary's	5	0-5	279	55.8
17. Angelo State	4	0-4	200	50.0

SCORING LEADERS

	GP	Min	FG	3FG	FT	Points	AVG
1. Hedge, Maighan (Cameron)	7	221	51	18	35	155	22.1
2. Brown, Raiana (Texas A&M Int'l)	2	51	17	0	8	42	21.0
3. Davis, Liah (UT Tyler)	3	101	30	0	2	62	20.7
4. Bain, Brooklin (Oklahoma Christian)	2	78	15	2	4	36	18.0
5. Wilson, Hannah (St. Mary's)	5	172	32	0	18	82	16.4
6. Robinson, Dyani (Tex. A&M-Commerce)	4	111	20	9	15	64	16.0
7. Frances King (Midwestern State)	4	129	23	3	15	64	16.0
8. Moyer, Sadie (Texas Woman's)	4	154	19	4	22	64	16.0
9. Stice, Natalie (Eastern New Mexico)	4	119	20	6	13	59	14.8
10. Swiercz, Emily (Texas A&M Int'l)	2	44	8	4	9	29	14.5

REBOUND LEADERS

	GP	OFF	AVG/G	DEF	AVG/G	TOT.	AVG/G
1. Davis, Liah (UT Tyler)	3	18	6.0	17	5.7	35	11.7
2. Johnson, Destiny (Western N.M.)	3	13	4.3	21	7.0	34	11.3
3. Wilson, Hannah (St. Mary's)	5	21	4.2	34	6.8	55	11.0
4. Bain, Brooklin (Okl. Christian)	2	3	1.5	18	9.0	21	10.5
5. Fernandez, Clara (Texas A&M Int'l)	2	7	3.5	11	5.5	18	9.0
6. Lewis, Alivia (West Texas A&M)	7	15	2.1	47	6.7	62	8.9
7. Blackburn, Kendall (Okl. Christian)	2	8	4.0	9	4.5	17	8.5
8. Kernal, DesiRay (Tex. A&M-Commerce)	4	7	1.8	24	6.0	31	7.8
9. Peterson, Stephanie (Cameron)	7	10	1.4	41	5.9	51	7.3
10. Stephens, Madeline (Angelo State)	4	7	1.8	22	5.5	29	7.3

STEALS LEADERS

	GP	No.	AVG/G
1. Munoz, Avalon (UT Permian Basin)	4	16	4.0
2. Jones, Kryslyn (Texas A&M-Kingsville)	4	13	3.3
3. Brown, Raiana (Texas A&M Int'l)	2	6	3.0
4. Morgan Lenahan (Midwestern State)	4	11	2.8
5. Peterson, Stephanie (Cameron)	7	19	2.7
6. Yoonis, Lena (Texas A&M International)	2	5	2.5
7. Swiercz, Emily (Texas A&M Int'l)	2	5	2.5
8. Hedge, Maighan (Cameron)	7	17	2.4

3FGM LEADERS

	GP	3FGM	AVG/G
1. Bradley, Kate (Oklahoma Christian)	2	6	3.0
2. Duncan, Ashton (Lubbock Christian)	7	19	2.7
3. Kowatch, Kyanne (Western New Mexico)	3	8	2.7
4. Hedge, Maighan (Cameron)	7	18	2.6
5. Robinson, Dyani (Texas A&M-Commerce)	4	9	2.3
6. Tschritter, Jayde (Texas A&M-Kingsville)	4	9	2.3
7. Swiercz, Emily (Texas A&M International)	2	4	2.0
8. Smith, Macy (Oklahoma Christian)	2	4	2.0
9. Levings, Kendra (Oklahoma Christian)	2	4	2.0
10. Hardeman, Sydney (St. Mary's)	4	7	1.8

FIELD GOAL LEADERS

	GP	FG	FGA	PCT
1. Kowatch, Kyanne (Western N.M.)	3	8	11	.727
2. Robinson, Dyani (A&M-Commerce)	4	9	14	.643
3. Hedge, Maighan (Cameron)	7	18	41	.439
4. Tschritter, Jayde (Tex. A&M-Kingsville)	4	9	22	.409
5. Duncan, Ashton (Lubbock Christian)	7	19	51	.373
6. Smith, Macy (Oklahoma Christian)	2	4	12	.333

ASSIST LEADERS

	GP	No.	AVG/G
1. Kowatch, Kyanne (Western New Mexico)	3	16	5.3
2. Frances King (Midwestern State)	4	19	4.8
3. Whitehead, Destini (UT Tyler)	3	14	4.7
4. Hedge, Maighan (Cameron)	7	29	4.1
5. Cockerill, Taylor (St. Edward's)	4	16	4.0
6. Fernandez, Clara (Tex. A&M International)	2	8	4.0
7. Schulte, Allie (Lubbock Christian)	7	27	3.9
8. Peterson, Stephanie (Cameron)	7	26	3.7
9. Rivers, Mia (Texas A&M-Kingsville)	4	14	3.5
10. Bradley, Kate (Oklahoma Christian)	2	7	3.5

BLOCKS LEADERS

	GP	No.	AVG/G
1. Dufek, Sammie (St. Edward's)	4	12	3.0
2. Davis, Liah (UT Tyler)	3	8	2.7
3. Hannah Reynolds (Midwestern State)	4	9	2.3
4. Lewis, Alivia (West Texas A&M)	7	15	2.1
5. Johnson, Destiny (Western N.M.)	3	6	2.0
6. Langton, Eva (Texas A&M International)	2	3	1.5
7. Burgess, Jayla (West Texas A&M)	7	9	1.3
8. Frances King (Midwestern State)	4	5	1.3
9. Decker, Kamirah (Eastern New Mexico)	4	5	1.3

3FG% LEADERS

	GP	3FG	3FGA	PCT
1. Kowatch, Kyanne (Western N.M.)	3	8	11	.727
2. Robinson, Dyani (A&M-Commerce)	4	9	14	.643
3. Hedge, Maighan (Cameron)	7	18	41	.439
4. Tschritter, Jayde (Tx A&M-Kingsville)	4	9	22	.409
5. Duncan, Ashton (Lubbock Christian)	7	19	51	.373

FT% LEADERS

	GP	FT	FTA	PCT
1. Blackburn, Kendall (Okl. Christian)	2	5	5	1.000
2. Schulte, Allie (Lubbock Christian)	7	35	36	.972
3. Moyer, Sadie (Texas Woman's)	4	22	24	.917
4. Swiercz, Emily (Texas A&M Int'l)	2	9	10	.900
5. Robinson, Dyani (A&M-Commerce)	4	15	17	.882
6. Yoonis, Lena (Texas A&M Int'l)	2	7	8	.875
7. Burr, Laynee (Lubbock Christian)	7	18	21	.857
8. Lewis, Alivia (West Texas A&M)	7	28	33	.848

LCU Claims Third Win Over Nationally Ranked Program This Season*Lady Chaps Win Despite Having Their Worst Shooting Performance at Home Since 2012*

LUBBOCK CHRISTIAN -VS- No.20 DAEMEN



62

NOV. 21 - LUBBOCK, TEXAS
RIP GRIFFIN CENTER

37

Behind a 17-point performance from Allie Schulte, No.1 Lubbock Christian University claimed their third win over a nationally ranked program this season, as the Lady Chaps completed their 93rd consecutive home win with a 62-37 win over No.20 Daemen College Saturday night inside Rip Griffin Center.

LCU won despite shooting 35.2% from the field (19/54). The percentage ended a streak of 47 consecutive home games in which LCU shot at least 40% at home. The last time LCU shot 35.2% or worse at home was on Feb. 11, 2012, as Oklahoma City held them to 31.4% in a home loss. The last time LCU shot as low of a percentage as Saturday and still won the game was Jan. 28, 2012 at home against Southern Nazarene.

The Lady Chaps also never trailed in the contest. Channing Cunyus made the Lady Chaps first shot attempt of the game, for a 2-0 lead, but then the Lady Chaps missed their next seven shot attempts. Daemen did not take advantage of the early opportunity, as they opened the game 1-of-7 and 2-of-13 from the field. LCU earned early trips to the free-throw line and a trio of trips helped LCU take an 8-2 lead 4:40 into the game. Sydney Hvizdzak ended LCU's run with a three-point field goal to spark a 5-0 run, which cut LCU's lead to 8-7. In the final 1:41 of the first quarter, LCU closed the quarter on an 8-0 run, with Schulte scoring the final six points of the quarter for a 16-7 LCU lead. Schulte was 2-of-2 from the field in the quarter, while her teammates were a combined 2-of-9.

The 8-0 run turned into a 15-2 run for the Lady Chaps, as Laynee Burr's three-pointer 2:37 into the quarter provided LCU a 23-9 advantage. Grace Foster scored LCU's final four points of the half to give LCU a 27-14 halftime lead.

Ashton Duncan (7) and Schulte (6) combined for 13 points in the third quarter. LCU used a 7-0 and 6-0 run in the quarter for a 46-26. LCU was able to mix reserves onto the floor in the fourth quarter, as LCU used 14 different players in the quarter. Schulte and Duncan each hit three-pointers during an 8-0 run in the opening three minutes of the fourth quarter. Brylee Winfrey led LCU with five points in the fourth quarter, with a pair of points on a trip to the line giving LCU their largest lead of the game at 57-30 as 4:34 remained.

While LCU shot 35.2% from the field, the LCU defenders held DC to a 28.6% shooting mark. Of the 49 attempts by the Wildcats, they only made consecutive field goals once. The Wildcats (2-2) were held without anyone scoring in double figures. Mickayla Ivy led DC with eight points.

The Lady Chaps were led by Schulte's 17 points. She was 5-of-8 from the field and 6-of-6 from the free-throw line. Duncan was LCU's only other player in double figures, as she scored 10 points.

LCU (6-1) and DC were meeting for the second time all-time and in consecutive seasons. LCU improved to 2-0 all-time against Daemen, meeting for a second consecutive season. They are the only New York based program LCU has ever faced.

TURNING POINT

LCU's 15-2 run in the first half was the turning point, as it came off the heels of a 5-0 Daemen run. LCU was 6-of-8 from the field during that run. Outside of the run, LCU was 13-of-46 (19.7%) the rest of the game. LCU led 23-9.

Daemen 37 • 2-2,0-0 ECC

#	Player	Total		3-Ptr		Rebounds		PF	TP	A	TO	Blk	Stl	Min
		FG-FGA	FG-FGA	FT-FTA	Off	Def	Tot							
15	Mickayla Ivy	f	3-9	0-2	2-4	1	1	2	4	8	1	1	0	21
25	Katie Titus		3-9	0-0	0-0	1	6	7	2	6	1	2	1	29
01	Tiara Filbert	q	1-8	0-4	2-2	0	4	4	2	4	1	3	0	32
03	Alahna Paige	g	3-7	0-0	1-2	0	5	5	2	7	3	1	0	29
13	Kaytlyn Matz	g	1-3	0-2	0-0	0	2	2	2	2	1	2	0	13
02	Maddy Stearns		0-0	0-0	0-2	0	0	0	0	0	0	0	0	1
04	Sydney Hvizdzak		1-5	1-5	2-2	0	4	4	2	5	0	1	1	27
10	Autumn Buchenschutz		0-0	0-0	0-0	0	0	0	0	1	0	0	0	4
14	Sarah Cloutier		0-3	0-0	0-0	0	0	0	0	0	0	0	0	10
20	Alina Estrella		0-0	0-0	0-0	1	1	2	0	0	0	1	0	5
24	Natalie Angeletti		1-3	0-0	0-0	4	5	9	1	2	2	4	0	23
32	Gina Fumerelle		0-0	0-0	0-0	0	0	0	0	0	0	0	0	1
55	Marina Maerkl		1-2	0-0	1-4	0	1	1	3	3	0	0	0	7
Team						2	0	2						
Totals			14-49	1-13	8-16	9	29	38	19	37	10	17	2	202

1st - FG %:	2-11	18.2%	2nd: 3-15	20.0%	3rd: 5-12	41.7%	4th: 4-11	36.4%	Game: 14-49	28.6%	Deadball
3PT %:	1-3	33.3%	0-3	0.0%	0-2	0.0%	0-4	0.0%	1-13	7.7%	Rebounds
FT %:	2-2	100.0%	1-2	50.0%	2-6	33.3%	3-6	50.0%	8-16	50.0%	5

Lubbock Christian 62 • 6-1,0-0 Lone Sta

#	Player	Total	3-Ptr	Rebounds	PF	TP	A	TO	Blk	Stl	Min			
		FG-FGA	FG-FGA	FT-FTA	Off	Def								
22	Juliana Robertson	f 0-3	0-0	2-2	4	3	7	3	2	1	1	0	20	
01	Ashton Duncan	g 4-14	2-8	0-0	0	3	3	2	10	1	1	0	23	
05	Laynee Burr	g 2-6	1-3	2-2	0	2	2	0	7	1	0	0	1	27
14	Channing Cunyus	g 2-4	0-1	1-1	0	5	5	2	5	2	0	0	1	24
21	Allie Schulte	g 5-8	1-2	6-6	1	1	2	2	17	2	1	0	0	22
00	Grace Foster	g 3-5	0-1	2-2	1	4	5	1	8	2	0	0	1	16
02	Maci Maddox	0-1	0-0	2-2	0	0	0	1	2	0	1	0	1	12
03	Audrey Robertson	0-2	0-0	0-0	0	2	2	1	0	0	1	0	0	12
12	Savannah Sumrall	0-1	0-0	0-0	0	0	0	0	0	2	0	0	1	6
15	Shaylee Stovall	0-1	0-0	0-0	0	1	1	0	0	1	0	0	0	8
20	Carli Bostwick	1-1	0-0	0-0	0	0	0	1	2	0	1	0	1	4
23	Brylee Winfrey	1-6	1-3	2-3	0	0	0	2	5	0	0	0	0	6
30	Audrey Spurdin	0-0	0-0	0-0	0	1	1	0	0	0	1	0	0	4
34	Whitney Cox	1-2	0-0	2-4	0	2	2	4	4	0	1	0	1	12
40	Reese Schumann	0-0	0-0	0-0	0	0	0	1	0	0	0	0	0	4
Team					1	5	6							
Totals		19-54	5-18	19-22	7	29	36	21	62	12	8	1	8	200

1st - FG %:	4-11	36.4%	2nd: 4-15	26.7%	3rd: 5-14	42.9%	4th: 5-14	35.7%	Game: 19-54	35.2%	Deadball
3PT %:	0-4	0.0%	1-3	33.3%	1-4	25.0%	3-7	42.9%	5-18	27.8%	Rebounds
FT %:	8-8	100.0%	2-2	100.0%	6-7	85.7%	3-5	60.0%	19-22	86.4%	2

Officials: Alike Arisumi, Destry Dacus, Randall Arbuckle
 Technical fouls: Daemen-None. Lubbock Christian-None.
 Attendance: 617
 2021-22 Women's Basketball. Round: 0. Daemen vs Lubbock Christian. Played at R

Score by periods	1st	2nd	3rd	4th	Total
Daemen	7	7	12	11	37
Lubbock Christian	16	11	19	16	62



2021-22 STATISTICS

RECORD:	OVERALL	HOME	AWAY	NEUTRAL
ALL GAMES	6-1	2-0	2-0	2-1
CONFERENCE	0-0	0-0	0-0	0-0
NON-CONFERENCE	6-1	2-0	2-0	2-1

##	Player	gp-gs	min	avg	Total		3-Point		F-Throw		Rebounds				pf	dq	a	to	blk	stl	pts	avg
					fg-fga	fg%	3fg-fga	3fg%	ft-fa	ft%	off	def	tot	avg								
00	Grace Foster	7-0	113	16.1	17-35	.486	4-12	.333	6-7	.857	7	25	32	4.6	9	0	3	12	5	3	44	6.3
01	Ashton Duncan	7-7	221	31.6	32-73	.438	19-51	.373	8-10	.800	2	19	21	3.0	9	0	8	6	0	5	91	13.0
02	Maci Maddox	6-0	55	9.2	1-6	.167	0-0	.000	4-4	1.000	0	1	1	0.2	2	0	1	2	0	3	6	1.0
03	Audrey Robertson	7-0	122	17.4	9-33	.273	2-10	.200	8-11	.727	3	4	7	1.0	7	0	1	5	2	5	28	4.0
05	Laynee Burr	7-7	214	30.6	23-52	.442	7-19	.368	18-21	.857	3	16	19	2.7	19	0	20	7	1	10	71	10.1
12	Savannah Sumrall	3-0	10	3.3	0-1	.000	0-0	.000	0-0	.000	1	1	2	0.7	0	0	2	1	0	1	0	0.0
14	Channing Cunyus	7-7	185	26.4	20-45	.444	7-23	.304	12-13	.923	6	20	26	3.7	11	0	12	8	2	10	59	8.4
15	Shaylee Stovall	5-0	22	4.4	0-2	.000	0-1	.000	3-4	.750	0	3	3	0.6	1	0	1	0	0	0	3	0.6
20	Carli Bostwick	3-0	7	2.3	1-1	1.000	0-0	.000	0-0	.000	0	1	1	0.3	1	0	0	1	0	1	2	0.7
21	Allie Schulte	7-7	206	29.4	24-52	.462	7-21	.333	35-36	.972	3	27	30	4.3	12	0	27	15	3	14	90	12.9
22	Juliana Robertson	7-7	182	26.0	12-40	.300	2-9	.222	10-11	.909	10	31	41	5.9	24	2	5	17	3	3	36	5.1
23	Brylee Winfrey	3-0	11	3.7	1-6	.167	1-3	.333	2-3	.667	0	0	0	0.0	2	0	0	2	1	0	5	1.7
30	Audrey Spurgin	4-0	10	2.5	0-1	.000	0-0	.000	2-2	1.000	0	1	1	0.3	4	0	0	3	0	0	2	0.5
34	Whitney Cox	6-0	37	6.2	3-8	.375	0-0	.000	3-6	.500	0	4	4	0.7	8	0	1	3	3	1	9	1.5
40	Reese Schumann	2-0	5	2.5	0-0	.000	0-0	.000	0-0	.000	0	0	0	0.0	1	0	0	0	0	0	0	0.0
Team											4	16	20				5					
Total.....		7	1400		143-355	.403	49-149	.329	111-128	.867	39	169	208	29.7	110	2	81	87	20	56	446	63.7
Opponents.....		7	1402		139-377	.369	36-126	.286	65-101	.644	75	167	242	34.6	122	3	78	113	12	36	379	54.1

TEAM STATISTICS	LCU	OPP
SCORING	446	379
Points per game	63.7	54.1
Scoring margin	+9.6	-
FIELD GOALS-ATT	143-355	139-377
Field goal pct	.403	.369
3 POINT FG-ATT	49-149	36-126
3-point FG pct	.329	.286
3-pt FG made per game	7.0	5.1
FREE THROWS-ATT	111-128	65-101
Free throw pct	.867	.644
F-Throws made per game	15.9	9.3
REBOUNDS	208	242
Rebounds per game	29.7	34.6
Rebounding margin	-4.9	-
ASSISTS	81	78
Assists per game	11.6	11.1
TURNOVERS	87	113
Turnovers per game	12.4	16.1
Turnover margin	+3.7	-
Assist/turnover ratio	0.9	0.7
STEALS	56	36
Steals per game	8.0	5.1
BLOCKS	20	12
Blocks per game	2.9	1.7
ATTENDANCE	1229	1069
Home games-Avg/Game	2-614	2-317
Neutral site-Avg/Game	-	3-145

Date	Opponent		Score	Att
! 11/05/21	vs Montevallo	w	69-55	155
! 11/06/21	at Mont. St. Billings	w	67-61	397
! 11/07/21	vs Tampa	w	56-44	130
^ 11/12/21	at Colo. Christian	w	60-46	237
^ 11/13/21	vs Colorado St.-Pueblo	L	56-64	150
11/19/21	LANDER	w	76-72	612
11/20/21	DAEMEN	w	62-37	617

* = Conference game

! = DII CCA Tip Off Classic at the Trailhead (Billings, Mont.)

^ = RMAC/LSC Tip-Off Challenge (Lakewood, Colo.)

Score by Periods	1st	2nd	3rd	4th	Totals
Lubbock Christian	91	120	125	110	446
Opponents	90	92	91	106	379

LUBBOCK CHRISTIAN UNIVERSITY WOMEN'S BASKETBALL GAME NOTES

LCU RECORD WHEN...

At home	2-0
On the road	2-0
Neutral site.....	2-1
Lone Star Conference	0-0

Monday	0-0
Tuesday.....	0-0
Wednesday	0-0
Thursday	0-0
Friday.....	3-0
Saturday.....	2-1
Sunday	1-0

Against ranked opponents.....	3-0
Top 5 opponents	1-0
Top 10 opponents	0-0

Scoring

70-plus points	1-0
60-69 points	4-0
50-59 points	1-1
49 or less points.....	0-0

Allowing

70-plus points	0-1
60-69 points	2-0
50-59 points	2-0
49 or less points.....	2-0

Shooting

50% or better	0-0
40-49%	4-0
30-39%	2-1
29% or less	0-0

Opponents Shooting

50% or better	0-0
40-49%	2-0
30-39%	3-1
29.9% or less	1-0

Percentages From The Field

Out-shooting the opponent	5-0
Opponents out-shoot LCU	1-1
Tied	0-0

Rebounding

Out-rebound an opponent.....	2-0
Opponent out-rebounds LCU	4-1
Tied	0-0

Turnovers

Commit 15 or less turnovers	5-1
Commit more than 15 turnovers.....	1-0
Force 15 or less turnovers.....	1-1
Force more than 15	5-0

Misc.

When Leading after the 1st Quarter.....	4-0
When Tied after the 1st Quarter.....	0-1
When Trailing after the 1st Quarter.....	2-0

When Leading at halftime	5-0
When Tied at halftime	0-0
When Trailing at halftime	1-1

When Leading after the 3rd Quarter	5-1
When Tied after the 3rd Quarter	0-0
When Trailing after the 3rd Quarter	1-0
Overtime	0-0

Lubbock Christian Team Game-by-Game Comparison (as of Nov 22, 2021)

All games

Opponent	1st	2nd	Score	Mar	Total FG	FG Pct	3-Pointers	3FG Pct	Free Throws	FT Pct	Rebounds	Assist	T/Over	Block	Steal	Fouls
Montevallo	36/26	33/29	69-55	+14	25-59/18-56	.424/.321	13-29/5-22	.448/.227	6-6/14-24	1000/.583	35/41 (6)	19/8	13/16	5/2	11/6	18/13
Mont. St. Billings	36/31	31/30	67-61	+6	22-46/23-51	.478/.451	7-19/7-19	.368/.368	16-21/8-8	.762/1000	25/29 (4)	10/18	13/18	1/0	9/4	12/20
Tampa	24/21	32/23	56-44	+12	20-44/17-43	.455/.395	8-23/5-11	.348/.455	8-11/5-6	.727/.833	26/24 +2	13/12	14/17	2/1	6/3	14/15
Colo. Christian	27/22	33/24	60-46	+14	18-56/18-52	.321/.346	6-23/4-16	.261/.250	18-21/6-13	.857/.462	35/29 +6	9/7	9/15	3/2	9/2	15/17
Colorado St.-Pueblo	28/31	28/33	56-64	(8)	18-51/23-62	.353/.371	6-21/8-25	.286/.320	14-16/10-13	.875/.769	23/41 (18)	8/10	14/13	3/3	9/10	13/14
LANDER	33/37	43/35	76-72	+4	21-45/26-64	.467/.406	4-16/6-20	.250/.300	30-31/14-21	.968/.667	28/40 (12)	10/13	16/17	5/2	4/10	17/24
DAEMEN	27/14	35/23	62-37	+25	19-54/14-49	.352/.286	5-18/1-13	.278/.077	19-22/8-16	.864/.500	36/38 (2)	12/10	8/17	1/2	8/1	21/19

Note: Game totals are displayed in the format TEAM/OPPONENT for each category

LUBBOCK CHRISTIAN UNIVERSITY WOMEN'S BASKETBALL GAME NOTES

Lubbock Christian Points-Rebounds-Assists (as of Nov 22, 2021)

All games

				00	01	02	03	05	12	14
Opponent	Date	Score		FOSTER, GRA	DUNCAN, ASH	MADDOX, MAC	ROBERTSON,	BURR, LAYNE	SUMRALL, SA	CUNYUS, CHA
vs Montevallo	11/05/21	69-55	w	7-9-1	12-4-1	0-0-0	2-0-0	10-3-6	0-0-0	8-2-2
at Mont. St. Billings	11/06/21	67-61	w	0-1-0	22-5-2	DNP	5-0-0	5-2-3	DNP	12-1-2
vs Tampa	11/07/21	56-44	w	10-2-0	10-2-2	0-0-1	1-1-1	18-3-2	DNP	2-5-2
at Colo. Christian	11/12/21	60-46	w	8-2-0	10-2-1	0-1-0	3-3-0	19-3-3	0-2-0	10-8-2
vs Colorado St.-Pueblo	11/13/21	56-64	L	4-5-0	20-4-0	0-0-0	5-0-0	2-2-0	DNP	11-1-0
LANDER	11/19/21	76-72	w	7-8-0	7-1-1	4-0-0	12-1-0	10-4-5	DNP	11-4-2
DAEMEN	11/20/21	62-37	w	8-5-2	10-3-1	2-0-0	0-2-0	7-2-1	0-0-2	5-5-2

				15	20	21	22	23	30	34
Opponent	Date	Score		STOVALL, SH	BOSTWICK, C	SCHULTE, AL	ROBERTSON,	WINFREY, BR	SPURGIN, AU	COX, WHITNE
vs Montevallo	11/05/21	69-55	w	0-0-0	0-1-0	19-5-5	9-6-3	0-0-0	2-0-0	0-1-1
at Mont. St. Billings	11/06/21	67-61	w	DNP	DNP	16-7-3	7-5-0	DNP	DNP	0-0-0
vs Tampa	11/07/21	56-44	w	0-0-0	DNP	10-4-4	5-7-1	DNP	0-0-0	0-0-0
at Colo. Christian	11/12/21	60-46	w	3-2-0	0-0-0	4-3-3	0-8-0	0-0-0	0-0-0	3-1-0
vs Colorado St.-Pueblo	11/13/21	56-64	L	0-0-0	DNP	12-6-8	2-5-0	DNP	DNP	DNP
LANDER	11/19/21	76-72	w	DNP	DNP	12-3-2	11-3-0	DNP	DNP	2-0-0
DAEMEN	11/20/21	62-37	w	0-1-1	2-0-0	17-2-2	2-7-1	5-0-0	0-1-0	4-2-0

				40
Opponent	Date	Score		SCHUMANN, R
vs Montevallo	11/05/21	69-55	w	DNP
at Mont. St. Billings	11/06/21	67-61	w	DNP
vs Tampa	11/07/21	56-44	w	DNP
at Colo. Christian	11/12/21	60-46	w	0-0-0
vs Colorado St.-Pueblo	11/13/21	56-64	L	DNP
LANDER	11/19/21	76-72	w	DNP
DAEMEN	11/20/21	62-37	w	0-0-0

LCU - INDIVIDUAL GAME HIGHS

Points	22	Ashton Duncan at Mont. St. Billings (11/06/21)
	20	Ashton Duncan vs Colorado St.-Pueblo (11/13/21)
	19	Laynee Burr at Colo. Christian (11/12/21)
	19	Allie Schulte vs Montevallo (11/05/21)
	18	Laynee Burr vs Tampa (11/07/21)
Field Goals Made	8	Ashton Duncan vs Colorado St.-Pueblo (11/13/21)
	8	Allie Schulte vs Montevallo (11/05/21)
Field Goal Att.	14	Ashton Duncan vs Daemen (11/20/21)
	14	Ashton Duncan vs Colorado St.-Pueblo (11/13/21)
FG Pct (min 5 made)	.727 (8-11)	Allie Schulte vs Montevallo (11/05/21)
	.714 (5-7)	Juliana Robertson vs Lander (11/19/21)
3-Point FG Made	4	Ashton Duncan vs Colorado St.-Pueblo (11/13/21)
	4	Ashton Duncan vs Montevallo (11/05/21)
3-Point FG Att.	12	Ashton Duncan vs Montevallo (11/05/21)
	8	Ashton Duncan vs Daemen (11/20/21)
	8	Ashton Duncan vs Colorado St.-Pueblo (11/13/21)
3-Pt FG Pct (min 2 made)	1.000 (2-2)	Channing Cunyus vs Montevallo (11/05/21)
	.667 (2-3)	Laynee Burr vs Montevallo (11/05/21)
Free Throws Made	10	Allie Schulte vs Lander (11/19/21)
	8	Allie Schulte vs Colorado St.-Pueblo (11/13/21)
Free Throw Att.	10	Allie Schulte vs Lander (11/19/21)
	8	Allie Schulte vs Colorado St.-Pueblo (11/13/21)
FT Pct (min 3 made)	1.000 (10-10)	Allie Schulte vs Lander (11/19/21)
	1.000 (8-8)	Allie Schulte vs Colorado St.-Pueblo (11/13/21)
	1.000 (6-6)	Allie Schulte vs Daemen (11/20/21)
	1.000 (6-6)	Channing Cunyus at Colo. Christian (11/12/21)
	1.000 (6-6)	Allie Schulte at Mont. St. Billings (11/06/21)
	1.000 (4-4)	Channing Cunyus vs Lander (11/19/21)
	1.000 (4-4)	Laynee Burr vs Lander (11/19/21)
	1.000 (4-4)	Laynee Burr vs Tampa (11/07/21)
	1.000 (4-4)	Juliana Robertson vs Montevallo (11/05/21)
	1.000 (3-3)	Laynee Burr at Colo. Christian (11/12/21)
Rebounds	9	Grace Foster vs Montevallo (11/05/21)
	8	Grace Foster vs Lander (11/19/21)
	8	Juliana Robertson at Colo. Christian (11/12/21)
	8	Channing Cunyus at Colo. Christian (11/12/21)
Assists	8	Allie Schulte vs Colorado St.-Pueblo (11/13/21)
	6	Laynee Burr vs Montevallo (11/05/21)
Steals	5	Allie Schulte at Colo. Christian (11/12/21)
	4	Laynee Burr vs Montevallo (11/05/21)
Blocked Shots	2	Grace Foster vs Lander (11/19/21)
	2	Grace Foster vs Montevallo (11/05/21)
Turnovers	5	Allie Schulte at Mont. St. Billings (11/06/21)
	4	Allie Schulte vs Lander (11/19/21)
	4	Grace Foster vs Lander (11/19/21)
	4	Juliana Robertson vs Tampa (11/07/21)
	4	Juliana Robertson at Mont. St. Billings (11/06/21)
Fouls	5	Juliana Robertson vs Lander (11/19/21)
	5	Juliana Robertson at Mont. St. Billings (11/06/21)
Minutes	37	Ashton Duncan at Mont. St. Billings (11/06/21)
	36	Ashton Duncan vs Colorado St.-Pueblo (11/13/21)
	36	Laynee Burr at Mont. St. Billings (11/06/21)
	35	Ashton Duncan vs Lander (11/19/21)

OPPONENT - INDIVIDUAL GAME HIGHS

Points	27	Zamiya Passmore vs Lander (11/19/21)
	18	Alisha Davis vs Colorado St.-Pueblo (11/13/21)
	14	Aniaya Jester vs Lander (11/19/21)
	14	Tomia Johnson vs Colorado St.-Pueblo (11/13/21)
	14	Taryn Shelley at Mont. St. Billings (11/06/21)
Field Goals Made	10	Zamiya Passmore vs Lander (11/19/21)
	7	Alisha Davis vs Colorado St.-Pueblo (11/13/21)
	7	Taryn Shelley at Mont. St. Billings (11/06/21)
Field Goal Att.	19	Zamiya Passmore vs Lander (11/19/21)
	17	Alisha Davis vs Colorado St.-Pueblo (11/13/21)
FG Pct (min 5 made)	1.000 (5-5)	Kortney Nelson at Mont. St. Billings (11/06/21)
	.833 (5-6)	Agnes Paul at Colo. Christian (11/12/21)
3-Point FG Made	4	Tomia Johnson vs Colorado St.-Pueblo (11/13/21)
	2	Zamiya Passmore vs Lander (11/19/21)
	2	Aniaya Jester vs Lander (11/19/21)
	2	Alisha Davis vs Colorado St.-Pueblo (11/13/21)
	2	Mia Guest at Colo. Christian (11/12/21)
	2	Eleanore Marciszewsk vs Tampa (11/07/21)
	2	Kayla Bonilla vs Tampa (11/07/21)
	2	Shayla Montague at Mont. St. Billings (11/06/21)
	2	Danielle Zahn at Mont. St. Billings (11/06/21)
3-Point FG Att.	9	Tomia Johnson vs Colorado St.-Pueblo (11/13/21)
	8	Zamiya Passmore vs Lander (11/19/21)
	8	Shayla Montague at Mont. St. Billings (11/06/21)
3-Pt FG Pct (min 2 made)	1.000 (2-2)	Eleanore Marciszewsk vs Tampa (11/07/21)
	.667 (2-3)	Alisha Davis vs Colorado St.-Pueblo (11/13/21)
	.667 (2-3)	Mia Guest at Colo. Christian (11/12/21)
	.667 (2-3)	Kayla Bonilla vs Tampa (11/07/21)
Free Throws Made	7	Shyan Flack vs Montevallo (11/05/21)
	6	Aniaya Jester vs Lander (11/19/21)
	6	JaNaiya Davis vs Colorado St.-Pueblo (11/13/21)
Free Throw Att.	10	Shyan Flack vs Montevallo (11/05/21)
	8	Aniaya Jester vs Lander (11/19/21)
FT Pct (min 3 made)	.857 (6-7)	JaNaiya Davis vs Colorado St.-Pueblo (11/13/21)
	.833 (5-6)	Zamiya Passmore vs Lander (11/19/21)
Rebounds	13	Shyan Flack vs Montevallo (11/05/21)
	12	Alisha Davis vs Colorado St.-Pueblo (11/13/21)
Assists	7	Zamiya Passmore vs Lander (11/19/21)
	5	Danielle Zahn at Mont. St. Billings (11/06/21)
Steals	4	Makaila Cange vs Lander (11/19/21)
	4	Michaela Edwards vs Montevallo (11/05/21)
Blocked Shots	2	Miriam Recarte vs Lander (11/19/21)
	1	Katie Titus vs Daemen (11/20/21)
	1	Sydney Hvizdzak vs Daemen (11/20/21)
	1	Kansas Watts vs Colorado St.-Pueblo (11/13/21)
	1	JaNaiya Davis vs Colorado St.-Pueblo (11/13/21)
	1	Alisha Davis vs Colorado St.-Pueblo (11/13/21)
	1	Grace Field at Colo. Christian (11/12/21)
	1	Megan Kamps at Colo. Christian (11/12/21)
	1	Melijah Sullivan vs Tampa (11/07/21)
	1	Savannah Lee vs Montevallo (11/05/21)
	1	Shyan Flack vs Montevallo (11/05/21)
Turnovers	5	Zamiya Passmore vs Lander (11/19/21)

DOUBLE-DOUBLES

Opponent	T/O	2ndCh	Paint	FastB	Bench	Ties	Leads	WL	Score	Leads overcome
Montevallo	17	9	24	0	11	0	0	W	69-55	
Mont. St. Billings	16	6	24	8	5	0	3	W	67-61	trailed by 12 2nd-09:46
Tampa	28	2	22	2	11	0	3	W	56-44	trailed by 3 2nd-07:27
Colo. Christian	14	12	18	4	17	1	2	W	60-46	trailed by 2 1st-02:44
Colorado St.-Pueblo	10	0	20	0	9	1	3	L	56-64	lost 5 3rd-04:12
Lander	20	8	26	15	25	3	7	W	76-72	trailed by 13 2nd-04:52
Daemen	15	10	22	2	21	0	0	W	62-37	
Totals	120	47	156	31	99	5	18			
Average/Game	17.1	6.7	22.3	4.4	14.1	0.7	2.6			
Opponent	81	75	164	34	111	13	17			
Average/Game	11.6	10.7	23.4	4.9	15.9	1.9	2.4			

GAME BY GAME SPECIALTY STATS

LUBBOCK CHRISTIAN UNIVERSITY WOMEN'S BASKETBALL GAME NOTES

LCU - TEAM GAME HIGHS

POINTS	76	LANDER (11/19/21)
	69	vs Montevallo (11/05/21)
	67	at Mont. St. Billings (11/06/21)
	62	DAEMEN (11/20/21)
	60	at Colo. Christian (11/12/21)
FIELD GOALS MADE	25	vs Montevallo (11/05/21)
	22	at Mont. St. Billings (11/06/21)
FIELD GOAL ATTEMPTS	59	vs Montevallo (11/05/21)
	56	at Colo. Christian (11/12/21)
FIELD GOAL PERCENTAGE	.478 (22-46)	at Mont. St. Billings (11/06/21)
	.467 (21-45)	LANDER (11/19/21)
3 PT FIELD GOALS MADE	13	vs Montevallo (11/05/21)
	8	vs Tampa (11/07/21)
3 PT FG ATTEMPTS	29	vs Montevallo (11/05/21)
	23	at Colo. Christian (11/12/21)
	23	vs Tampa (11/07/21)
3 PT FG PERCENTAGE	.448 (13-29)	vs Montevallo (11/05/21)
	.368 (7-19)	at Mont. St. Billings (11/06/21)
FREE THROWS MADE	30	LANDER (11/19/21)
	19	DAEMEN (11/20/21)
FREE THROW ATTEMPTS	31	LANDER (11/19/21)
	22	DAEMEN (11/20/21)
FREE THROW PERCENTAGE	1.000 (6-6)	vs Montevallo (11/05/21)
	.968 (30-31)	LANDER (11/19/21)
REBOUNDS	36	DAEMEN (11/20/21)
	35	at Colo. Christian (11/12/21)
	35	vs Montevallo (11/05/21)
ASSISTS	19	vs Montevallo (11/05/21)
	13	vs Tampa (11/07/21)
STEALS	11	vs Montevallo (11/05/21)
	9	vs Colorado St.-Pueblo (11/13/21)
	9	at Colo. Christian (11/12/21)
	9	at Mont. St. Billings (11/06/21)
BLOCKED SHOTS	5	LANDER (11/19/21)
	5	vs Montevallo (11/05/21)
TURNOVERS	16	LANDER (11/19/21)
	14	vs Colorado St.-Pueblo (11/13/21)
	14	vs Tampa (11/07/21)
FOULS	21	DAEMEN (11/20/21)
	18	vs Montevallo (11/05/21)

LCU - TEAM GAME LOWS

POINTS	56	vs Tampa (11/07/21)
	56	vs Colorado St.-Pueblo (11/13/21)
	60	at Colo. Christian (11/12/21)
	62	DAEMEN (11/20/21)
	67	at Mont. St. Billings (11/06/21)
FIELD GOALS MADE	18	at Colo. Christian (11/12/21)
	18	vs Colorado St.-Pueblo (11/13/21)
FIELD GOAL ATTEMPTS	44	vs Tampa (11/07/21)
	45	LANDER (11/19/21)
FIELD GOAL PERCENTAGE	.321 (18-56)	at Colo. Christian (11/12/21)
	.352 (19-54)	DAEMEN (11/20/21)
3 PT FIELD GOALS MADE	4	LANDER (11/19/21)
	5	DAEMEN (11/20/21)
3 PT FG ATTEMPTS	16	LANDER (11/19/21)
	18	DAEMEN (11/20/21)
3 PT FG PERCENTAGE	.250 (4-16)	LANDER (11/19/21)
	.261 (6-23)	at Colo. Christian (11/12/21)
FREE THROWS MADE	6	vs Montevallo (11/05/21)
	8	vs Tampa (11/07/21)
FREE THROW ATTEMPTS	6	vs Montevallo (11/05/21)
	11	vs Tampa (11/07/21)
FREE THROW PERCENTAGE	.727 (8-11)	vs Tampa (11/07/21)
	.762 (16-21)	at Mont. St. Billings (11/06/21)
REBOUNDS	23	vs Colorado St.-Pueblo (11/13/21)
	25	at Mont. St. Billings (11/06/21)
ASSISTS	8	vs Colorado St.-Pueblo (11/13/21)
	9	at Colo. Christian (11/12/21)
STEALS	4	LANDER (11/19/21)
	6	vs Tampa (11/07/21)
BLOCKED SHOTS	1	at Mont. St. Billings (11/06/21)
	1	DAEMEN (11/20/21)
TURNOVERS	8	DAEMEN (11/20/21)
	9	at Colo. Christian (11/12/21)
FOULS	12	at Mont. St. Billings (11/06/21)
	13	vs Colorado St.-Pueblo (11/13/21)

LCU OPPONENT - TEAM GAME HIGHS

POINTS	72	LANDER (11/19/21)
	64	vs Colorado St.-Pueblo (11/13/21)
	61	at Mont. St. Billings (11/06/21)
	55	vs Montevallo (11/05/21)
	46	at Colo. Christian (11/12/21)
FIELD GOALS MADE	26	LANDER (11/19/21)
	23	vs Colorado St.-Pueblo (11/13/21)
	23	at Mont. St. Billings (11/06/21)
FIELD GOAL ATTEMPTS	64	LANDER (11/19/21)
	62	vs Colorado St.-Pueblo (11/13/21)
FIELD GOAL PERCENTAGE	.451 (23-51)	at Mont. St. Billings (11/06/21)
	.406 (26-64)	LANDER (11/19/21)
3 PT FIELD GOALS MADE	8	vs Colorado St.-Pueblo (11/13/21)
	7	at Mont. St. Billings (11/06/21)
3 PT FG ATTEMPTS	25	vs Colorado St.-Pueblo (11/13/21)
	22	vs Montevallo (11/05/21)
3 PT FG PERCENTAGE	.455 (5-11)	vs Tampa (11/07/21)
	.368 (7-19)	at Mont. St. Billings (11/06/21)
FREE THROWS MADE	14	LANDER (11/19/21)
	14	vs Montevallo (11/05/21)
FREE THROW ATTEMPTS	24	vs Montevallo (11/05/21)
	21	LANDER (11/19/21)
FREE THROW PERCENTAGE	1.000 (8-8)	at Mont. St. Billings (11/06/21)
	.833 (5-6)	vs Tampa (11/07/21)
REBOUNDS	41	vs Colorado St.-Pueblo (11/13/21)
	41	vs Montevallo (11/05/21)
ASSISTS	18	at Mont. St. Billings (11/06/21)
	13	LANDER (11/19/21)
STEALS	10	LANDER (11/19/21)
	10	vs Colorado St.-Pueblo (11/13/21)
BLOCKED SHOTS	3	vs Colorado St.-Pueblo (11/13/21)
	2	DAEMEN (11/20/21)
	2	LANDER (11/19/21)
	2	at Colo. Christian (11/12/21)
	2	vs Montevallo (11/05/21)
TURNOVERS	18	at Mont. St. Billings (11/06/21)
	17	DAEMEN (11/20/21)
	17	LANDER (11/19/21)
	17	vs Tampa (11/07/21)
FOULS	24	LANDER (11/19/21)
	20	at Mont. St. Billings (11/06/21)

LCU OPPONENT - TEAM GAME LOWS

POINTS	37	DAEMEN (11/20/21)
	44	vs Tampa (11/07/21)
	46	at Colo. Christian (11/12/21)
	55	vs Montevallo (11/05/21)
	61	at Mont. St. Billings (11/06/21)
FIELD GOALS MADE	14	DAEMEN (11/20/21)
	17	vs Tampa (11/07/21)
FIELD GOAL ATTEMPTS	43	vs Tampa (11/07/21)
	49	DAEMEN (11/20/21)
FIELD GOAL PERCENTAGE	.286 (14-49)	DAEMEN (11/20/21)
	.321 (18-56)	vs Montevallo (11/05/21)
3 PT FIELD GOALS MADE	1	DAEMEN (11/20/21)
	4	at Colo. Christian (11/12/21)
3 PT FG ATTEMPTS	11	vs Tampa (11/07/21)
	13	DAEMEN (11/20/21)
3 PT FG PERCENTAGE	.077 (1-13)	DAEMEN (11/20/21)
	.227 (5-22)	vs Montevallo (11/05/21)
FREE THROWS MADE	5	vs Tampa (11/07/21)
	6	at Colo. Christian (11/12/21)
FREE THROW ATTEMPTS	6	vs Tampa (11/07/21)
	8	at Mont. St. Billings (11/06/21)
FREE THROW PERCENTAGE	.462 (6-13)	at Colo. Christian (11/12/21)
	.500 (8-16)	DAEMEN (11/20/21)
REBOUNDS	24	vs Tampa (11/07/21)
	29	at Mont. St. Billings (11/06/21)
	29	at Colo. Christian (11/12/21)
ASSISTS	7	at Colo. Christian (11/12/21)
	8	vs Montevallo (11/05/21)
STEALS	1	DAEMEN (11/20/21)
	2	at Colo. Christian (11/12/21)
BLOCKED SHOTS	0	at Mont. St. Billings (11/06/21)
	1	vs Tampa (11/07/21)
TURNOVERS	13	vs Colorado St.-Pueblo (11/13/21)
	15	at Colo. Christian (11/12/21)
FOULS	13	vs Montevallo (11/05/21)
	14	vs Colorado St.-Pueblo (11/13/21)

CONFERENCE STATISTICS

HOME STATISTICS

#	Player	Total					3-Point		F-Throw		Rebounds											
		gp-gs	min	avg	fg-fga	fg%	3fg-fga	3fg%	ft-fa	ft%	off	def	tot	avg	pf	dq	a	to	bkl	stl	pts	avg
00	Grace Foster	2-0	35	17.5	5-10	.500	1-2	.500	4-4	1.000	3	10	13	6.5	2	0	2	4	2	1	15	7.5
01	Ashton Duncan	2-2	58	29.0	6-20	.300	3-12	.250	2-2	1.000	0	4	4	2.0	4	0	2	2	0	1	17	8.5
02	Maci Maddox	2-0	24	12.0	1-2	.500	0-0	.000	4-4	1.000	0	0	0	0.0	2	0	0	2	0	2	6	3.0
03	Audrey Robertson	2-0	37	18.5	3-11	.273	1-3	.333	5-6	.833	1	2	3	1.5	2	0	0	2	1	1	12	6.0
05	Laynee Burr	2-2	56	28.0	5-11	.455	1-4	.250	6-6	1.000	1	5	6	3.0	4	0	6	1	0	1	17	8.5
12	Savannah Sumrall	1-0	6	6.0	0-1	.000	0-0	.000	0-0	.000	0	0	0	0.0	0	0	2	0	0	1	0	0.0
14	Channing Cunyus	2-2	50	25.0	5-10	.500	1-5	.200	5-5	1.000	1	8	9	4.5	3	0	4	1	0	2	16	8.0
15	Shaylee Stovall	1-0	8	8.0	0-1	.000	0-0	.000	0-0	.000	0	1	1	1.0	0	0	1	0	0	0	0	0.0
20	Carli Bostwick	1-0	4	4.0	1-1	1.000	0-0	.000	0-0	.000	0	0	0	0.0	1	0	0	1	0	1	2	2.0
21	Allie Schulte	2-2	52	26.0	6-13	.462	1-4	.250	16-16	1.000	1	4	5	2.5	4	0	4	5	1	1	29	14.5
22	Juliana Robertson	2-2	40	20.0	5-10	.500	0-1	.000	3-3	1.000	5	5	10	5.0	8	1	1	4	1	0	13	6.5
23	Brylee Winfrey	1-0	6	6.0	1-6	.167	1-3	.333	2-3	.667	0	0	0	0.0	2	0	0	0	0	0	5	5.0
30	Audrey Spurgin	1-0	4	4.0	0-0	.000	0-0	.000	0-0	.000	0	1	1	1.0	1	0	0	1	0	0	0	0.0
34	Whitney Cox	2-0	16	8.0	2-3	.667	0-0	.000	2-4	.500	0	2	2	1.0	4	0	0	1	1	1	6	3.0
40	Reese Schumann	1-0	4	4.0	0-0	.000	0-0	.000	0-0	.000	0	0	0	0.0	1	0	0	0	0	0	0	0.0
Team											2	8	10									
Total.....		2	400		40-99	.404	9-34	.265	49-53	.925	14	50	64	32.0	38	1	22	24	6	12	138	69.0
Opponents.....		2	402		40-113	.354	7-33	.212	22-37	.595	31	47	78	39.0	43	1	23	34	4	11	109	54.5

AWAY STATISTICS

#	Player	Total					3-Point		F-Throw		Rebounds										pts	avg
		gp-gs	min	avg	fg-fga	fg%	3fg-fga	3fg%	ft-fta	ft%	off	def	tot	avg	pf	dq	a	to	bik	stl		
00	Grace Foster	2-0	22	11.0	3-8	.375	0-3	.000	2-2	1.000	1	2	3	1.5	3	0	0	2	0	0	8	4.0
01	Ashton Duncan	2-2	66	33.0	10-18	.556	6-12	.500	6-8	.750	1	6	7	3.5	3	0	3	0	0	2	32	16.0
02	Maci Maddox	1-0	13	13.0	0-3	.000	0-0	.000	0-0	.000	0	1	1	1.0	0	0	0	0	0	0	0	0.0
03	Audrey Robertson	2-0	39	19.5	3-9	.333	1-3	.333	1-1	1.000	2	1	3	1.5	2	0	0	1	1	1	8	4.0
05	Laynee Burr	2-2	63	31.5	8-18	.444	2-7	.286	6-9	.667	1	4	5	2.5	4	0	6	1	0	4	24	12.0
12	Savannah Sumrall	1-0	2	2.0	0-0	.000	0-0	.000	0-0	.000	1	1	2	2.0	0	0	0	1	0	0	0	0.0
14	Channing Cunyus	2-2	60	30.0	7-19	.368	2-9	.222	6-6	1.000	3	6	9	4.5	1	0	4	2	0	4	22	11.0
15	Shaylee Stovall	1-0	5	5.0	0-0	.000	0-0	.000	3-4	.750	0	2	2	2.0	0	0	0	0	0	0	3	3.0
20	Carli Bostwick	1-0	2	2.0	0-0	.000	0-0	.000	0-0	.000	0	0	0	0.0	0	0	0	0	0	0	0	0.0
21	Allie Schulte	2-2	60	30.0	5-15	.333	2-8	.250	8-8	1.000	2	8	10	5.0	4	0	6	5	1	7	20	10.0
22	Juliana Robertson	2-2	51	25.5	3-9	.333	0-0	.000	1-2	.500	4	9	13	6.5	8	1	0	6	1	0	7	3.5
23	Brylee Winfrey	1-0	3	3.0	0-0	.000	0-0	.000	0-0	.000	0	0	0	0.0	0	0	0	1	0	0	0	0.0
30	Audrey Spurgin	1-0	2	2.0	0-1	.000	0-0	.000	0-0	.000	0	0	0	0.0	1	0	0	0	0	0	0	0.0
34	Whitney Cox	2-0	11	5.5	1-2	.500	0-0	.000	1-2	.500	0	1	1	0.5	1	0	0	1	1	0	3	1.5
40	Reese Schumann	1-0	1	1.0	0-0	.000	0-0	.000	0-0	.000	0	0	0	0.0	0	0	0	0	0	0	0	0.0
Team											1	3	4									
Total.....		2	400		40-102	.392	13-42	.310	34-42	.810	16	44	60	30.0	27	1	19	22	4	18	127	63.5
Opponents.....		2	400		41-103	.398	11-35	.314	14-21	.667	16	42	58	29.0	37	2	25	33	2	6	107	53.5

NEUTRAL SITE STATISTICS

#	Player	Total					3-Point		F-Throw		Rebounds											
		gp-gs	min	avg	fg-fga	fg%	3fg-fga	3fg%	ft-fa	ft%	off	def	tot	avg	pf	dq	a	to	bk	stl	pts	avg
00	Grace Foster	3-0	56	18.7	9-17	.529	3-7	.429	0-1	.000	3	13	16	5.3	4	0	1	6	3	2	21	7.0
01	Ashton Duncan	3-3	97	32.3	16-35	.457	10-27	.370	0-0	.000	1	9	10	3.3	2	0	3	4	0	2	42	14.0
02	Maci Maddox	3-0	18	6.0	0-1	.000	0-0	.000	0-0	.000	0	0	0	0.0	0	0	1	0	0	1	0	0.0
03	Audrey Robertson	3-0	46	15.3	3-13	.231	0-4	.000	2-4	.500	0	1	1	0.3	3	0	1	2	0	3	8	2.7
05	Laynee Burr	3-3	95	31.7	10-23	.435	4-8	.500	6-6	1.000	1	7	8	2.7	11	0	8	5	1	5	30	10.0
12	Savannah Sumrall	1-0	2	2.0	0-0	.000	0-0	.000	0-0	.000	0	0	0	0.0	0	0	0	0	0	0	0	0.0
14	Channing Cunyus	3-3	75	25.0	8-16	.500	4-9	.444	1-2	.500	2	6	8	2.7	7	0	4	5	2	4	21	7.0
15	Shaylee Stovall	3-0	9	3.0	0-1	.000	0-1	.000	0-0	.000	0	0	0	0.0	1	0	0	0	0	0	0	0.0
20	Carli Bostwick	1-0	1	1.0	0-0	.000	0-0	.000	0-0	.000	0	1	1	1.0	0	0	0	0	0	0	0	0.0
21	Allie Schulte	3-3	94	31.3	13-24	.542	4-9	.444	11-12	.917	0	15	15	5.0	4	0	17	5	1	6	41	13.7
22	Juliana Robertson	3-3	91	30.3	4-21	.190	2-8	.250	6-6	1.000	1	17	18	6.0	8	0	4	7	1	3	16	5.3
23	Brylee Winfrey	1-0	2	2.0	0-0	.000	0-0	.000	0-0	.000	0	0	0	0.0	0	0	0	1	1	0	0	0.0
30	Audrey Spurgin	2-0	4	2.0	0-0	.000	0-0	.000	2-2	1.000	0	0	0	0.0	2	0	0	2	0	0	2	1.0
34	Whitney Cox	2-0	10	5.0	0-3	.000	0-0	.000	0-0	.000	0	1	1	0.5	3	0	1	1	1	0	0	0.0
Team												1	5	6								
Total.....		3	600		63-154	.409	27-73	.370	28-33	.848	9	75	84	28.0	45	0	40	41	10	26	181	60.3
Opponents.....		3	600		58-161	.360	18-58	.310	29-43	.674	28	78	106	35.3	42	0	30	46	6	19	163	54.3

Date	Opponent	Score
11/19/21	LANDER	W 76-72
11/20/21	DAEMEN	W 62-37

* = Conference game

Date	Opponent	Score
! 11/06/21	at Mont. St. Billings	W 67-61
^ 11/12/21	at Colo. Christian	W 60-46

* = Conference game

! = DII CCA Tip Off Classic at the Trailhead (Billings, Mont.)

^ = RMAC/LSC Tip-Off Challenge (Lakewood, Colo.)

CAREER STATISTICS

BOSTWICK, Carli

				Field Goals		3-Point		F-Throws		Rebounds									Scoring	
SEASON	TEAM	GP-GS	MIN/AVG	FG-FGA	FG%	3FG-3FGA	3FG%	FT-FTA	FT%	OFF	DEF	TOT	AVG	PF-FO	A	TO	BLK	STL	PTS	AVG
2021-22	LCU	3-0	8/2.6	1-1	1.000	0-0	.000	0-0	.000	0	1	1	0.3	1-0	0	1	0	1	2	0.7
TOTAL		3-0	8/2.6	1-1	1.000	0-0	.000	0-0	.000	0	1	1	0.3	1-0	0	1	0	1	2	0.7

Single Game Highs

Statistic	Value	
Points	2	vs Daemen 11/20/21
Rebounds	1	vs Montevallo 11/05/21
Steals	1	vs Daemen 11/20/21
FG Made	1	vs Daemen 11/20/21
FG Attempts	1	vs Daemen 11/20/21

BURR, Laynee

				Field Goals		3-Point		F-Throws		Rebounds									Scoring	
SEASON	TEAM	GP-GS	MIN/AVG	FG-FGA	FG%	3FG-3FGA	3FG%	FT-FTA	FT%	OFF	DEF	TOT	AVG	PF-FO	A	TO	BLK	STL	PTS	AVG
2018-19	LCU	25-0	194/7.8	22-49	.449	9-21	.429	12-15	.800	5	4	9	0.4	14-0	9	14	1	11	65	2.6
2019-20	LCU	31-0	474/15.3	51-109	.468	7-30	.233	36-49	.735	11	30	41	1.3	43-0	29	28	1	18	145	4.7
2020-21	LCU	23-0	371/16.1	40-88	.455	5-18	.278	39-46	.848	18	38	56	2.4	37-1	22	24	1	25	124	5.4
2021-22	LCU	7-7	214/30.6	23-52	.442	7-19	.368	18-21	.857	3	16	19	2.7	19-0	20	7	1	10	71	10.1
TOTAL		86-7	1253/14.6	136-298	.456	28-88	.318	105-131	.802	37	88	125	1.5	113-1	80	73	4	64	405	4.7

Single Game Highs

Statistic	Value	
Points	19	at Colo. Christian 11/12/21
Rebounds	5	4 times
Assists	6	vs Montevallo 11/05/21
Steals	4	vs Midwestern St. 01/27/21, vs Montevallo 11/05/21
Blocks	1	4 times
FG Made	7	at Colo. Christian 11/12/21
FG Attempts	12	at Colo. Christian 11/12/21
3FG Made	2	4 times
3FG Attempts	5	at Colo. Christian 11/12/21
FT Made	6	vs Tex. A&M Int'l 01/22/21, vs Cameron 03/05/21
FT Attempts	8	vs Tex. A&M Int'l 01/22/21

COX, Whitney

				Field Goals		3-Point		F-Throws		Rebounds									Scoring	
SEASON	TEAM	GP-GS	MIN/AVG	FG-FGA	FG%	3FG-3FGA	3FG%	FT-FTA	FT%	OFF	DEF	TOT	AVG	PF-FO	A	TO	BLK	STL	PTS	AVG
2019-20	LCU	15-0	107/7.1	8-32	.250	0-5	.000	5-8	.625	5	21	26	1.7	13-0	3	3	9	3	21	1.4
2020-21	LCU	18-0	161/9.0	14-43	.326	0-1	.000	5-13	.385	4	35	39	2.2	18-0	6	8	13	6	33	1.8
2021-22	LCU	6-0	37/6.2	3-8	.375	0-0	.000	3-6	.500	0	4	4	0.7	8-0	1	3	3	1	9	1.5
TOTAL		39-0	305/7.8	25-83	.301	0-6	.000	13-27	.481	9	60	69	1.8	39-0	10	14	25	10	63	1.6

Single Game Highs

Statistic	Value	
Points	5	vs Western N.M. 02/11/21
Rebounds	5	vs St. Mary's (TX) 12/11/20
Assists	1	10 times
Steals	2	vs Western N.M. 02/11/21
Blocks	3	vs Tex. A&M Int'l 01/23/21, vs St. Mary's (TX) 12/11/20, vs Angelo St. 01/16/21
FG Made	2	6 times
FG Attempts	7	vs St. Mary's (TX) 12/12/20
3FG Attempts	1	6 times
FT Made	2	5 times
FT Attempts	4	at Cameron 12/19/19, vs Tex. A&M-Commerce 03/06/21, vs Daemen 11/20/21

CUNYUS, Channing

				Field Goals		3-Point		F-Throws		Rebounds										Scoring	
SEASON	TEAM	GP-GS	MIN/AVG	FG-FGA	FG%	3FG-3FGA	3FG%	FT-FTA	FT%	OFF	DEF	TOT	AVG	PF-FO	A	TO	BLK	STL	PTS	AVG	
2018-19	LCU	22-0	158/7.2	17-29	.586	2-5	.400	14-20	.700	4	33	37	1.7	15-0	16	10	0	11	50	2.3	
2019-20	LCU	31-0	402/13.0	44-89	.494	19-39	.487	14-16	.875	14	48	62	2.0	33-0	34	22	9	12	121	3.9	
2020-21	LCU	21-0	342/16.3	46-98	.469	16-45	.356	15-18	.833	10	34	44	2.1	34-0	21	27	15	20	123	5.9	
2021-22	LCU	7-7	185/26.5	20-45	.444	7-23	.304	12-13	.923	6	20	26	3.7	11-0	12	8	2	10	59	8.4	
TOTAL		81-7	1088/13.4	127-261	.487	44-112	.393	55-67	.821	34	135	169	2.1	93-0	83	67	26	53	353	4.4	

Single Game Highs

Statistic	Value	
Points	14	vs St. Mary's (TX) 03/02/21
Rebounds	8	at Colo. Christian 11/12/21
Assists	5	vs St. Mary's (TX) 01/23/20
Steals	3	at Texas-Tyler 02/01/20, vs St. Mary's (TX) 03/02/21, at Mont. St. Billings 11/06/21
Blocks	2	5 times
FG Made	5	4 times
FG Attempts	11	at Mont. St. Billings 11/06/21
3FG Made	4	vs St. Mary's (TX) 03/02/21
3FG Attempts	6	vs St. Mary's (TX) 03/02/21
FT Made	6	at Colo. Christian 11/12/21
FT Attempts	6	vs Cameron 03/13/21, at Colo. Christian 11/12/21

DUNCAN, Ashton

				Field Goals		3-Point		F-Throws		Rebounds									Scoring	
SEASON	TEAM	GP-GS	MIN/AVG	FG-FGA	FG%	3FG-3FGA	3FG%	FT-FTA	FT%	OFF	DEF	TOT	AVG	PF-FO	A	TO	BLK	STL	PTS	AVG
2017-18	LCU	18-0	118/6.6	15-39	.385	12-28	.429	1-2	.500	4	19	23	1.3	10-0	11	5	2	9	43	2.4
2018-19	LCU	31-0	302/9.7	38-121	.314	26-93	.280	8-13	.615	12	23	35	1.1	14-0	17	12	2	7	110	3.5
2019-20	LCU	31-27	774/25.0	105-222	.473	79-182	.434	9-11	.818	7	53	60	1.9	46-0	42	27	5	24	298	9.6
2020-21	LCU	23-23	664/28.9	90-209	.431	69-165	.418	20-27	.741	10	45	55	2.4	25-0	38	19	6	24	269	11.7
2021-22	LCU	7-7	220/31.4	32-73	.438	19-51	.373	8-10	.800	2	19	21	3.0	9-0	8	6	0	5	91	13.0
TOTAL		110-57	2079/18.9	280-664	.422	205-519	.395	46-63	.730	35	159	194	1.8	104-0	116	69	15	69	811	7.4

Single Game Highs

Statistic	Value	
Points	26	vs St. Mary's (TX) 12/11/20
Rebounds	8	vs Daemen 03/23/21
Assists	6	vs Tex. A&M Int'l 02/20/20, vs St. Mary's (TX) 03/02/21
Steals	3	4 times
Blocks	2	vs Central Mo. 03/24/21
FG Made	10	at Angelo St. 11/23/19
FG Attempts	16	at Angelo St. 11/23/19, vs Tex. A&M Int'l 01/22/21
3FG Made	8	vs St. Mary's (TX) 12/11/20
3FG Attempts	13	vs Cameron 03/05/21
FT Made	6	vs Drury 03/26/21
FT Attempts	8	vs Drury 03/26/21

FOSTER, Grace

				Field Goals		3-Point		F-Throws		Rebounds									Scoring	
SEASON	TEAM	GP-GS	MIN/AVG	FG-FGA	FG%	3FG-3FGA	3FG%	FT-FTA	FT%	OFF	DEF	TOT	AVG	PF-FO	A	TO	BLK	STL	PTS	AVG
2021-22	LCU	7-0	114/16.3	17-35	.486	4-12	.333	6-7	.857	7	25	32	4.6	9-0	3	12	5	3	44	6.3
TOTAL		7-0	114/16.3	17-35	.486	4-12	.333	6-7	.857	7	25	32	4.6	9-0	3	12	5	3	44	6.3

Single Game Highs

Statistic	Value	
Points	10	vs Tampa 11/07/21
Rebounds	9	vs Montevallo 11/05/21
Assists	2	vs Daemen 11/20/21
Steals	1	vs Tampa 11/07/21, vs Colorado St.-Pueblo 11/13/21, vs Daemen 11/20/21
Blocks	2	vs Montevallo 11/05/21, vs Lander 11/19/21
FG Made	4	vs Tampa 11/07/21
FG Attempts	8	at Colo. Christian 11/12/21
3FG Made	2	vs Tampa 11/07/21
3FG Attempts	5	vs Tampa 11/07/21
FT Made	2	at Colo. Christian 11/12/21, vs Lander 11/19/21, vs Daemen 11/20/21
FT Attempts	2	at Colo. Christian 11/12/21, vs Lander 11/19/21, vs Daemen 11/20/21

LUBBOCK CHRISTIAN UNIVERSITY WOMEN'S BASKETBALL GAME NOTES
MADDOX, Maci

WBBOW, Inc.

				Field Goals		3-Point		F-Throws		Rebounds									Scoring	
SEASON	TEAM	GP-GS	MIN/AVG	FG-FGA	FG%	3FG-3FGA	3FG%	FT-FTA	FT%	OFF	DEF	TOT	AVG	PF-FO	A	TO	BLK	STL	PTS	AVG
2020-21	LCU	15-0	98/6.6	13-25	.520	3-8	.375	3-3	1.000	3	6	9	0.6	5-0	8	7	0	13	32	2.1
2021-22	LCU	6-0	54/9.0	1-6	.167	0-0	.000	4-4	1.000	0	1	1	0.2	2-0	1	2	0	3	6	1.0
TOTAL		21-0	152/7.2	14-31	.452	3-8	.375	7-7	1.000	3	7	10	0.5	7-0	9	9	0	16	38	1.8

Single Game Highs

Statistic	Value	
Points	7	vs Tex. A&M Int'l 01/23/21
Rebounds	2	at Texas-Tyler 01/02/21
Assists	2	vs St. Mary's (TX) 12/11/20, vs St. Mary's (TX) 12/12/20, vs Western N.M. 02/12/21
Steals	4	at Texas-Tyler 01/03/21
FG Made	2	vs Tex. A&M Int'l 01/23/21, at Texas-Tyler 01/02/21, vs St. Mary's (TX) 03/02/21
FG Attempts	3	5 times
3FG Made	1	vs St. Mary's (TX) 12/12/20, vs Midwestern St. 01/27/21, at Texas-Tyler 01/03/21
3FG Attempts	2	at Texas-Tyler 01/03/21
FT Made	3	vs Tex. A&M Int'l 01/23/21
FT Attempts	3	vs Tex. A&M Int'l 01/23/21

ROBERTSON, Audrey

				Field Goals		3-Point		F-Throws		Rebounds										Scoring	
SEASON	TEAM	GP-GS	MIN/AVG	FG-FGA	FG%	3FG-3FGA	3FG%	FT-FTA	FT%	OFF	DEF	TOT	AVG	PF-FO	A	TO	BLK	STL	PTS	AVG	
2020-21	LCU	20-0	177/8.9	12-33	.364	3-14	.214	7-9	.778	17	7	24	1.2	14-0	11	12	0	9	34	1.7	
2021-22	LCU	7-0	119/17.0	9-33	.273	2-10	.200	8-11	.727	3	4	7	1.0	7-0	1	5	2	5	28	4.0	
TOTAL		27-0	296/11.0	21-66	.318	5-24	.208	15-20	.750	20	11	31	1.1	21-0	12	17	2	14	62	2.3	

Single Game Highs

Statistic	Value	
Points	12	vs Lander 11/19/21
Rebounds	4	at Texas-Tyler 01/02/21, at Texas-Tyler 01/03/21
Assists	6	at Texas-Tyler 01/02/21
Steals	2	at Texas-Tyler 01/02/21, vs Colorado St.-Pueblo 11/13/21
Blocks	1	at Colo. Christian 11/12/21, vs Lander 11/19/21
FG Made	3	vs St. Mary's (TX) 12/11/20, vs Lander 11/19/21
FG Attempts	9	vs Lander 11/19/21
3FG Made	1	5 times
3FG Attempts	3	vs Angelo St. 01/16/21, vs Lander 11/19/21
FT Made	5	vs Lander 11/19/21
FT Attempts	6	vs Lander 11/19/21

SPURGIN, Audrey

				Field Goals		3-Point		F-Throws		Rebounds									Scoring	
SEASON	TEAM	GP-GS	MIN/AVG	FG-FGA	FG%	3FG-3FGA	3FG%	FT-FTA	FT%	OFF	DEF	TOT	AVG	PF-FO	A	TO	BLK	STL	PTS	AVG
2021-22	LCU	4-0	10/2.5	0-1	.000	0-0	.000	2-2	1.000	0	1	1	0.3	4-0	0	3	0	0	2	0.5
TOTAL		4-0	10/2.5	0-1	.000	0-0	.000	2-2	1.000	0	1	1	0.3	4-0	0	3	0	0	2	0.5

Single Game Highs

Statistic	Value	
Points	2	vs Montevallo 11/05/21
Rebounds	1	vs Daemen 11/20/21
FG Attempts	1	at Colo. Christian 11/12/21
FT Made	2	vs Montevallo 11/05/21
FT Attempts	2	vs Montevallo 11/05/21

LUBBOCK CHRISTIAN UNIVERSITY WOMEN'S BASKETBALL GAME NOTES

Montevallo vs Lubbock Christian 11/05/21 3:30 pm at Billings, MT

Montevallo 55 • 0-1,0-0 Gulf Sou

#	Player	Total		3-Ptr		Rebounds			PF	TP	A TO Blk Stl				Min
		FG-FGA	FG-FGA	FT-FTA	FT-FTA	Off	Def	Tot			A	TO	Blk	Stl	
12	Shyan Flack	r	1-8	1-3	7-10	2	11	13	0	10	1	1	1	0	27
22	Savannah Lee	f	4-11	0-3	1-2	4	5	9	2	9	0	4	1	1	27
05	Marisa Snodgrass	g	2-6	1-5	0-1	1	3	4	2	5	1	4	0	1	31
11	Kiya Sain	g	4-10	0-3	0-0	2	2	4	0	8	2	0	0	0	28
23	Jordan Jones	g	2-8	0-1	0-2	1	1	2	3	4	1	2	0	0	20
01	Jennifer Andrew		0-1	0-0	3-4	0	1	1	2	3	1	1	0	0	11
02	Sara Strohmeier		0-0	0-0	0-0	0	0	0	1	0	0	0	0	0	4
03	Tiara McLeod		1-1	0-0	2-2	0	4	4	1	4	0	0	0	0	10
04	Anna Katherine Eastm		0-2	1-2	0-0	0	0	0	2	3	0	1	0	0	13
14	Leisha Steger		0-1	0-1	0-0	0	0	0	0	0	0	0	0	0	3
20	Miriam Oldacre		0-1	0-0	0-0	0	0	0	0	0	1	1	0	0	3
33	Elizabeth Hill		1-3	1-3	0-0	0	0	0	0	3	1	1	0	0	5
33	Michaela Edwards		2-4	1-1	1-3	1	1	1	0	6	0	1	0	4	18
Team						2	1	3							
Totals			18-56	5-22	14-24	13	28	41	13	55	8	16	2	6	200

1st - FG %: 3-14 21.4% 2nd: 6-17 35.3% 3rd: 3-13 23.1% 4th: 6-12 50.0% Game: 18-56 32.1% Deadball
3FG %: 1-5 20.0% 1-7 14.3% 1-5 20.0% 2-5 40.0% 5-22 22.7% Rebounds
FT %: 4-4 100.0% 2-6 33.3% 5-8 62.5% 3-6 50.0% 14-24 58.3%

Lubbock Christian 69 • 1-0,0-0 Lone Sta

#	Player	Total		3-Ptr		Rebounds			PF	TP	A TO Blk Stl				Min
		FG-FGA	FG-FGA	FT-FTA	FT-FTA	Off	Def	Tot			A	TO	Blk	Stl	
22	Juliana Robertson	r	2-9	1-3	4-4	0	6	6	4	9	3	2	0	0	24
01	Ashton Duncan	g	4-12	4-12	0-0	1	3	4	2	12	1	1	0	2	30
05	Laynee Burr	g	4-10	2-3	0-0	1	2	3	4	10	6	3	0	4	31
14	Channing Cunyus	g	3-3	2-2	0-0	1	1	2	3	8	2	1	1	1	21
21	Allie Schulte	g	8-11	3-5	0-0	0	5	5	0	19	5	2	0	2	30
00	Grace Foster		3-6	1-2	0-0	2	7	9	2	7	1	2	2	0	18
02	Maci Maddox		0-1	0-0	0-0	0	0	0	0	0	0	0	0	1	10
03	Audrey Robertson		1-4	0-1	0-0	0	0	0	1	2	0	0	0	1	16
12	Savannah Sumrall		0-0	0-0	0-0	0	0	0	0	0	0	0	0	0	2
15	Shaylee Stovall		0-1	0-1	0-0	0	0	0	1	0	0	0	0	0	6
20	Carli Bostwick		0-0	0-0	0-0	0	1	1	0	0	0	0	0	0	1
23	Brylee Winfrey		0-0	0-0	0-0	0	0	0	0	0	0	1	1	0	2
30	Audrey Spurgin		0-0	0-0	2-2	0	0	0	0	2	0	1	0	0	3
34	Whitney Cox		0-2	0-0	0-0	0	1	1	1	0	1	0	1	0	6
Team						1	3	4							
Totals			25-59	13-29	6-6	6	29	35	18	69	19	13	5	11	200

1st - FG %: 8-18 44.4% 2nd: 6-14 42.9% 3rd: 7-16 43.8% 4th: 4-11 36.4% Game: 25-59 42.4% Deadball
3FG %: 5-10 50.0% 3-7 42.9% 2-4 50.0% 3-8 37.5% 13-29 44.8% Rebounds
FT %: 0-0 0.0% 0-0 0.0% 4-4 100.0% 0-2 0.0% 6-6 100.0%

Officials: Brian Williams, Steven Landro, Aaron Haugen
Technical fouls: Montevallo-None. Lubbock Christian-None.
Attendance: 155

2021-22 Women's Basketball. Round: 0. Lubbock Christian vs Montevallo. Played

Score by periods	1st	2nd	3rd	4th	Total
Montevallo	11	15	12	17	55
Lubbock Christian	21	15	20	13	69

Lubbock Christian vs Mont. St. Billings 11/06/21 7:00 pm at Billings, MT

Lubbock Christian 67 • 2-0,0-0 Lone Sta

#	Player	Total		3-Ptr		Rebounds			PF	TP	A TO Blk Stl				Min
		FG-FGA	FG-FGA	FT-FTA	FT-FTA	Off	Def	Tot			A	TO	Blk	Stl	
22	Juliana Robertson	r	3-4	0-0	1-2	1	4	5	5	7	0	4	1	0	25
01	Ashton Duncan	g	7-11	3-6	5-6	1	4	5	2	22	2	0	0	2	37
05	Laynee Burr	g	1-6	0-2	3-6	1	1	2	1	5	3	0	0	2	36
14	Channing Cunyus	g	5-11	2-5	0-0	0	1	1	0	12	2	1	0	3	35
21	Allie Schulte	g	4-10	2-5	6-6	1	6	7	3	16	3	5	0	2	34
00	Grace Foster		0-0	0-0	0-0	0	1	1	0	0	0	2	0	0	7
03	Audrey Robertson		2-4	0-1	1-1	0	0	0	0	5	0	0	0	0	21
34	Whitney Cox		0-0	0-0	0-0	0	0	0	1	0	0	1	0	0	5
Team						1	3	4							
Totals			22-46	7-19	16-21	5	20	25	12	67	10	13	1	9	200

1st - FG %: 3-14 21.4% 2nd: 9-13 69.2% 3rd: 5-11 45.5% 4th: 5-8 62.5% Game: 22-46 47.8% Deadball
3FG %: 2-8 25.0% 3-5 60.0% 1-4 25.0% 1-2 50.0% 7-19 36.8% Rebounds
FT %: 0-0 0.0% 7-7 100.0% 1-4 25.0% 6-10 60.0% 16-21 76.2%

Mont. St. Billings 61 • 1-1,0-0 Great No

#	Player	Total		3-Ptr		Rebounds			PF	TP	A TO Blk Stl				Min
		FG-FGA	FG-FGA	FT-FTA	FT-FTA	Off	Def	Tot			A	TO	Blk	Stl	
22	Cariann Kunkel	r	2-6	0-1	2-2	2	6	8	1	6	4	5	0	1	28
22	Taryn Shelley	r	7-13	0-1	0-0	3	8	11	2	14	2	4	0	0	30
12	Shayla Montague	g	3-10	2-8	0-0	0	2	2	2	8	1	0	0	2	31
21	Danielle Zahn	g	3-7	2-4	0-0	0	1	1	2	8	5	4	0	1	28
25	Addison Gardner	g	1-3	1-3	2-2	0	1	1	1	5	0	2	0	0	21
02	Skyler Patton		1-3	1-1	2-2	0	0	0	2	5	4	1	0	0	12
14	Kortney Nelson		5-5	0-0	0-0	2	2	4	3	10	1	0	0	0	25
30	Dyauni Boyce		1-4	1-1	2-2	1	1	2	5	5	1	0	0	0	21
33	Natalie Andreas		0-0	0-0	0-0	0	0	0	0	0	0	0	0	0	3
34	Shannon Reny		0-0	0-0	0-0	0	0	0	2	0	0	0	0	0	1
Team						0	0	0							
Totals			23-51	7-19	8-8	8	21	29	20	61	18	18	0	4	200

1st - FG %: 7-13 53.8% 2nd: 5-12 41.7% 3rd: 6-15 40.0% 4th: 5-11 45.5% Game: 23-51 45.1% Deadball
3FG %: 1-2 50.0% 2-4 50.0% 2-7 28.6% 2-6 33.3% 7-19 36.8% Rebounds
FT %: 2-2 100.0% 2-2 100.0% 2-2 100.0% 8-8 100.0% 0,1

Officials: Craig Thompson, Aaron Haugen, Gretchen Fowell
Technical fouls: Lubbock Christian-None. Mont. St. Billings-None.
Attendance: 397

2021-22 Women's Basketball. Round: 0. Lubbock Christian vs Mont. St. Billings.

Score by periods	1st	2nd	3rd	4th	Total
Lubbock Christian	8	28	14	17	67
Mont. St. Billings	17	14	16	14	61

Lubbock Christian vs Tampa 11/07/21 4:15 pm at Billings, MT

Lubbock Christian 56 • 3-0,0-0 Lone Sta

#	Player	Total		3-Ptr		Rebounds			PF	TP	A TO Blk Stl				Min
		FG-FGA	FG-FGA	FT-FTA	FT-FTA	Off	Def	Tot			A	TO	Blk	Stl	
22	Juliana Robertson	r	2-6	1-1	0-0	1	6	7	2	5	1	4	0	0	34
01	Ashton Duncan	g	4-9	2-7	0-0	0	2	2	0	10	2	1	0	0	31
05	Laynee Burr	g	6-10	2-4	4-4	0	3	3	3	18	2	1	0	1	33
14	Channing Cunyus	g	1-4	0-3	0-0	1	4	5	1	2	2	1	0	1	25
21	Allie Schulte	g	3-5	1-2	3-4	0	4	4	1	10	4	0	1	3	32
00	Grace Foster		4-7	2-5	0-1	1	1	2	2	10	0	3	1	1	19
02	Maci Maddox		0-0	0-0	0-0	0	0	0	0	0	1	0	0	0	5
03	Audrey Robertson		0-2	0-1	1-2	0	1	1	1	1	1	1	0	0	13
15	Shaylee Stovall		0-0	0-0	0-0	0	0	0	0	0	0	0	0	0	3
30	Audrey Spurgin		0-0	0-0	0-0	0	0	0	2	0	0	1	0	0	1
34	Whitney Cox		0-1	0-0	0-0	0	0	0	2	0	0	1	0	0	4
Team						0	2	2							
Totals			20-44	8-23	8-11	3	23	26	14	56	13	14	2	6	200

1st - FG %: 4-11 36.4% 2nd: 5-13 38.5% 3rd: 5-9 55.6% 4th: 6-11 54.5% Game: 20-44 45.5% Deadball
3FG %: 3-8 37.5% 1-4 25.0% 3-6 50.0% 1-5 20.0% 8-23 34.8% Rebounds
FT %: 1-2 50.0% 2-3 66.7% 4-4 100.0% 8-11 72.7%

Tampa 44 • 1-2,0-0 Sunshine

#	Player	FG-FGA	FG-FGA	FT-FTA	Off	Def	Tot	PF	TP	A	TO	Blk	Stl	Min	
13	Dori Nagy	f	5-7	0-0	1	2	3	4	10	2	3	0	0	31	
44	Erin Antosh	f	0-0	0-0	2-2	0	1	1	2	1	1	0	0	4	
00	Kayla Bonilla	g	2-4	2-3	0-0	0	0	0	2	6	2	2	0	23	
05	Audrey Ramsey	g	0-4	0-1	0-0	0	0	0	0	0	0	0	0	13	
24	Melajah Sullivan	g	5-12	0-0	2-2	1	6	7	2	12	1	3	1	0	27
01	Mya Giusto		2-4	1-2	0-0	0	2	2	5	1	2	0	0	22	
02	Aliyah Abney		0-4	0-1	1-2	0	3	3	1	0	0	0	1	18	
25	Terri Battle		1-3	0-0	0-0	1	1	2	3	2	1	2	0	1	26
30	Silvia Ferreiros		0-0	0-0	0-0	0	0	0	0	0	0	0	0	1	1
32	Danielle Delano		0-2	0-2	0-0	0	1	1	0	0	1	1	0	0	10
33	Eleanor Marciszewsk		2-3	2-2	0-0	0	3	3	0	6	3	2	0	1	24
35	Rory O'Hara		0-0	0-0	0-0	0	0	0	0	0	0	0	0	1	1
	Team				1	1	2				1				
Totals			17-43	5-11	5-6	4	20	24	15	44	12	17	1	3	200

LUBBOCK CHRISTIAN UNIVERSITY WOMEN'S BASKETBALL GAME NOTES

Lubbock Christian vs Colorado St.-Pueblo 11/13/21 11:00 am at Lakewood, CO

Lubbock Christian 56 • 4-1,0-0 Lone Sta

#	Player	Total		3-Ptr	Rebounds			PF	TP	A	TO	Blk	Stl	Min
		FG-FGA	FG-FGA		Off	Def	Tot							
22	Juliana Robertson	f	0-6	0-4	2-2	0	5	5	2	2	0	1	1	33
01	Ashton Duncan	g	8-14	4-8	0-0	0	4	4	0	20	0	2	0	36
05	Laynee Burr	g	0-3	0-1	2-2	0	2	2	4	2	0	1	1	31
14	Channing Cunyus	g	4-9	2-4	1-2	0	1	1	3	11	0	3	1	29
21	Allie Schulte	g	2-8	0-2	8-8	0	6	6	3	12	8	3	0	32
00	Grace Foster		2-4	0-0	0-0	0	5	5	0	4	0	1	0	19
02	Maci Maddox		0-0	0-0	0-0	0	0	0	0	0	0	0	0	3
03	Audrey Robertson		2-7	0-2	1-2	0	0	0	1	5	0	1	0	17
15	Shaylee Stovall		0-0	0-0	0-0	0	0	0	0	0	0	0	0	0+
Team					0	0	0			2				
Totals			18-51	6-21	14-16	0	23	23	13	56	8	14	3	200
1st - FG %:		4-16	25.0%	2nd: 5-13	38.5%	3rd: 6-10	60.0%	4th: 3-12	25.0%	Game: 18-51	35.3%	Deadball		
3FG %:		1-6	16.7%	3-5	60.0%	1-4	25.0%	1-6	16.7%	6-21	28.6%	Rebounds		
FT %:		2-2	100.0%	4-6	66.7%	4-4	100.0%	4-4	100.0%	14-16	87.5%	5,4		

Colorado St.-Pueblo 64 • 1-1,0-0 RMAC

#	Player	Total		3-Ptr	Rebounds			PF	TP	A	TO	Blk	Stl	Min
		FG-FGA	FG-FGA		Off	Def	Tot							
23	Alisha Davis	f	7-17	2-3	2-2	5	7	12	2	18	1	0	1	31
00	Ro Dominguez	g	2-9	1-6	0-0	0	7	7	2	5	1	3	0	28
02	Ja'Naiya Davis	g	3-6	1-3	6-7	1	2	3	1	13	3	1	1	28
13	Tomia Johnson	g	5-14	4-9	0-1	0	5	5	3	14	1	2	0	27
21	Kansas Watts	g	1-4	0-0	2-2	4	4	8	2	4	1	2	1	28
03	Sydni Williams		1-2	0-1	0-0	0	3	3	1	2	1	1	0	12
04	Torie Bass		0-2	0-0	0-0	0	0	0	0	0	1	1	0	9
10	Morgan Dial		1-2	0-1	0-0	0	0	0	1	2	1	1	0	8
22	Amaya Lewis		3-6	0-2	0-1	1	1	2	1	6	0	1	0	21
34	Aubriana Noti		0-0	0-0	0-0	0	1	1	0	0	0	0	0	8
Team					0	0	0			1				
Totals			23-62	8-25	10-13	11	30	41	14	64	10	13	3	200
1st - FG %:		9-14	64.3%	2nd: 4-14	28.6%	3rd: 4-18	22.2%	4th: 6-16	37.5%	Game: 23-62	37.1%	Deadball		
3FG %:		3-5	60.0%	1-7	14.3%	1-7	14.3%	3-6	50.0%	8-25	32.0%	Rebounds		
FT %:		1-1	100.0%	0-1	0.0%	2-3	66.7%	7-8	87.5%	10-13	76.9%	4		

Officials: Amirah Leonard,Alex Gebers,Kevin Kizewski
Technical fouls: Lubbock Christian-None. Colorado St.-Pueblo-None.
Attendance: 150
2021-22 Women's Basketball. Round: 0. Colorado St.-Pueblo vs Lubbock Christian

Score by periods	1st	2nd	3rd	4th	Total
Lubbock Christian	11	17	17	11	56
Colorado St.-Pueblo	22	9	11	22	64

Lander vs Lubbock Christian 11/19/21 7:00 pm at Lubbock, TX

Lander 72 • 2-1,0-0 Peach Be

#	Player	Total		3-Ptr	Rebounds			PF	TP	A	TO	Blk	Stl	Min
		FG-FGA	FG-FGA		Off	Def	Tot							
21	Makaila Cange	f	5-8	0-0	3-5	7	3	10	4	13	0	2	0	24
05	Miriam Recarte	c	5-14	1-3	0-0	4	1	5	2	11	2	1	2	30
01	Amiaya Melvins	g	1-6	0-0	0-2	3	3	6	4	2	1	3	0	29
04	Sarah Crews	g	1-4	1-3	0-0	3	2	5	5	3	2	1	0	30
11	Zamiya Passmore	g	10-19	2-8	5-6	0	1	1	4	27	7	5	0	37
02	Vashae Rideout		1-4	0-2	0-0	0	0	0	3	2	1	1	0	11
03	Aniaya Jester		3-9	2-4	6-8	3	5	8	2	14	0	2	0	34
10	Jakayah Parker		0-0	0-0	0-0	0	0	0	0	0	0	2	0	5
Team					2	3	5							
Totals			26-64	6-20	14-21	22	18	40	24	72	13	17	2	200
1st - FG %:		6-15	40.0%	2nd: 8-18	44.4%	3rd: 7-19	36.8%	4th: 5-12	41.7%	Game: 26-64	40.6%	Deadball		
3FG %:		1-4	25.0%	1-5	20.0%	2-6	33.3%	2-5	40.0%	6-20	30.0%	Rebounds		
FT %:		1-2	50.0%	6-9	66.7%	5-6	83.3%	2-4	50.0%	14-21	66.7%	2		

Lubbock Christian 76 • 5-1,0-0 Lone Sta

#	Player	Total		3-Ptr	Rebounds			PF	TP	A	TO	Blk	Stl	Min
		FG-FGA	FG-FGA		Off	Def	Tot							
22	Juliana Robertson	f	5-7	0-1	1-1	1	2	3	5	11	0	3	0	20
01	Ashton Duncan	g	2-6	1-4	2-2	0	1	1	2	7	1	1	0	35
05	Laynee Burr	g	3-5	0-1	4-4	1	3	4	4	10	5	1	0	29
14	Channing Cunyus	g	3-6	1-4	4-4	1	3	4	1	11	2	1	0	26
21	Allie Schulte	g	1-5	0-2	10-10	0	3	3	2	12	2	4	1	30
00	Grace Foster		2-5	1-1	2-2	2	6	8	1	7	0	4	2	19
02	Maci Maddox		1-1	0-0	2-2	0	0	0	1	4	0	1	0	12
03	Audrey Robertson		3-9	1-3	5-6	1	0	1	1	12	0	1	1	25
34	Whitney Cox		1-1	0-0	0-0	0	0	0	0	2	0	0	1	4
Team					1	3	4							
Totals			21-45	4-16	30-31	7	21	28	17	76	10	16	5	200
1st - FG %:		5-10	50.0%	2nd: 6-13	46.2%	3rd: 5-12	41.7%	4th: 5-10	50.0%	Game: 21-45	46.7%	Deadball		
3FG %:		1-4	25.0%	2-7	28.6%	1-2	50.0%	0-3	0.0%	4-16	25.0%	Rebounds		
FT %:		2-3	66.7%	6-6	100.0%	10-10	100.0%	12-12	100.0%	30-31	96.8%	0		

Officials: Laura Dominguez,Corey Malone,Chet Martin
Technical fouls: Lander-None. Lubbock Christian-None.
Attendance: 612
2021-22 Women's Basketball. Round: 0. Lander vs Lubbock Christian. Played at R

Score by periods	1st	2nd	3rd	4th	Total
Lander	14	23	21	14	72
Lubbock Christian	13	20	21	22	76

Daemen vs Lubbock Christian 11/20/21 8:00 pm at Lubbock, TX

Daemen 37 • 2-2,0-0 ECC

#	Player	Total		3-Ptr	Rebounds			PF	TP	A	TO	Blk	Stl	Min
		FG-FGA	FG-FGA		Off	Def	Tot							
15	Mickayla Ivy	f	3-9	0-2	2-4	1	1	2	4	8	1	1	0	21
25	Katie Titus	f	3-9	0-0	0-0	1	6	7	2	6	1	2	1	29
01	Tiara Filbert	g	1-8	0-4	2-2	0	4	4	2	4	1	3	0	32
03	Alahna Paige	g	3-7	0-0	1-2	0	5	5	2	7	3	1	0	29
13	Kaytlyn Matz	g	1-3	0-2	0-0	0	2	2	2	2	1	2	0	13
02	Maddy Stearns		0-0	0-0	0-2	0	0	0	0	0	0	0	0	1
04	Sydney Hvizdzak		1-5	1-5	2-2	0	4	4	2	5	0	1	1	27
10	Autumn Buchsenschutz		0-0	0-0	0-0	0	0	0	0	0	1	0	0	4
14	Sarah Cloutier		0-3	0-0	0-0	0	0	0	1	0	0	0	0	10
20	Alina Estrella		0-0	0-0	0-0	1	1	2	0	0	0	1	0	5
24	Natalie Angeletti		1-3	0-0	0-0	4	5	9	1	2	2	4	0	23
32	Gina Fumerelle		0-0	0-0	0-0	0	0	0	0	0	0	0	0	1
55	Marina Maerkl		1-2	0-0	1-4	0	1	1	3	3	0	0	0	7
Team					2	0	2							
Totals			14-49	1-13	8-16	9	29	38	19	37	10	17	2	202
1st - FG %:		2-11	18.2%	2nd: 3-15	20.0%	3rd: 5-12	41.7%	4th: 4-11	36.4%	Game: 14-49	28.6%	Deadball		
3FG %:		1-3	33.3%	0-3	0.0%	0-3	0.0%	0-4	0.0%	1-13	7.7%	Rebounds		
FT %:		2-2	100.0%	1-2	50.0%	2-6	33.3%	3-6	50.0%	8-16	50.0%	5		

Lubbock Christian 62 • 6-1,0-0 Lone Sta

#	Player	Total		3-Ptr	Rebounds			PF	TP	A	TO	Blk	Stl	Min	
		FG-FGA	FG-FGA		FT-FTA	Off	Def								Tot
22	Juliana Robertson	f	0-3	0-0	2-2	4	3	7	3	2	1	1	1	0	20
01	Ashton Duncan	g	4-14	2-8	0-0	0	3	3	2	10	1	1	0	1	23
05	Laynee Burr	g	2-6	1-3	2-2	0	2	2	0	7	1	0	0	1	27
14	Channing Cunyus	g	2-4	0-1	1-1	0	5	5	2	5	2	0	0	1	24
21	Allie Schulte	g	5-8	1-2	6-6	1	1	2	2	17	2	1	0	0	22
00	Grace Foster		3-5	0-1	2-2	1	4	5	1	8	2	0	0	1	16
02	Maci Maddox		0-1	0-0	2-2	0	0	0	1	2	0	1	0	1	12
03	Adavann Robertson		0-2	0-0	0-0	2	2	1	1	0	1	0	0	0	12
12	Savannah Sumrall		0-1	0-0	0-0	0	0	0	0	0	0	0	1	1	6
15	Shaylee Stovall		1-1	0-0	0-0	0	1	0	0	1	0	0	0	0	8
20	Carl Bostwick		1-1	0-0	0-0	0	0	0	1	2	0	1	0	1	4
23	Brylee Winfrey		1-6	1-3	2-3	0	0	0	2	5	0	0	0	0	6
30	Adavann Spurgin		0-0	0-0	0-0	0	1	1	0	0	1	0	0	0	4
34	Whitney Cox		1-2	0-0	2-4	0	2	2	4	4	0	1	0	1	12
40	Reese Schumann		0-0	0-0	0-0	0	0	0	1	0	0	0	0	0	4
Team						1	5	6							
Totals			19-54	5-18	19-22	7	29	36	21	62	12	8	5	8	200
1st FG %: 41.1 36.4 2nd: 4-15 26.7% 3rd: 6-14 42.9% 4th: 5-14 35.7% Game: 19-54 35.2% Deadball															
3FG %: 0-4 0.0% 2-2 100.0% 3-3 100.0% 3-5 60.0% 5-7 71.4% 5-20 25.0% Rebounds															
FT %: 8-8 100.0% 6-7 85.7% 3-5 60.0% 19-22 86.4%															

OPPONENT BREAKDOWN

Minnesota Crookston (0-4, 0-0)



Location: Crookston, Minn.

Enrollment: 1,754

Head Coach: Mike Roysland

Assistant Coaches: Nate Mahlen, Bryant Friskop

ALL-TIME MEETINGS

Date Winner Score
No Prior Meetings

ROSTER

No.	Name	Pos.	Ht.	Cl.	Hometown	Prior School
3	Jes Mertens	Guard	5-9	So.	Devils Lake, N.D.	Devils Lake H.S.
4	Emma Carpenter	Guard	5-10	Jr.	Eagan, Minn.	Eastview H.S.
5	Kylie Post	Guard	5-7	Sr.	Corcoran, Minn.	Maranatha Christian Academy H.S.
11	Kylea Praska	Guard	5-8	Sr.	Thief River Falls, Minn.	Thief River Falls Lincoln H.S.
12	Haylee Wheeler	FW/C	6-2	So.	Lakeville, Minn.	Lakeville South H.S.
14	Mary Burke	Forward	5-11	Sr.	Virginia, Minn.	Mountain Iron-Buhl H.S.
15	Mattea Vetsch	Guard	5-8	R-So.	Devils Lake, N.D.	Devils Lake H.S.
20	Abi Fraaza		6-0	Fr.	Biramwood, Wis.	Wittenberg-Biramwood H.S.
21	Abigail Leach		6-0	Jr.	Wyoming, Minn.	NIACC (Iowa)
22	Alex Page		6-0	Fr.	Grand Forks, N.D.	Red River H.S.
23	Bren Fox	Center	6-3	R-Jr.	Norwood Young America, Minn.	Norwood Young America H.S.
24	Lily Orazem		5-9	Fr.	Onamia, Minn.	Central Lakes College
25	Veronica Schwartz	Forward	5-10	Jr.	Parkers Prairie, Minn.	Parkers Prairie H.S.
32	Eden Golliher	G/FW	6-0	So.	Iron River, Mich.	West Iron County H.S.

TEAM STATISTICS

Game Records

Record	Overall	Home	Away	Neutral
ALL GAMES	0-4	0-0	0-3	0-1
CONFERENCE	0-0	0-0	0-0	0-0
NON-CONFERENCE	0-4	0-0	0-3	0-1

Score by Periods

Team	1st	2nd	3rd	4th	OT	TOT
Minn.-Crookston	57	44	61	49	0	211
Opponents	52	78	48	64	0	242

Team Box Score

No.	Player	GP-GS	MIN	AVG	FG-FGA	FG%	3FG-3FGA	3FG%	FT-FTA	FT%	OFF	DEF	TOT	AVG	PF	DQ	A	TO	BLK	STL	PTS	AVG
14	BURKE, Mary	4-4	111:56	28.0	14-39	.359	10-25	.400	0-0	.000	0	20	20	5.0	7	0	2	9	1	4	38	9.5
23	FOX, Bren	4-4	86:51	21.7	13-39	.333	0-4	.000	8-9	.889	5	18	23	5.8	9	0	6	7	4	2	34	8.5
5	POST, Kylie	4-4	103:08	25.8	11-23	.478	1-6	.167	8-15	.533	3	12	15	3.8	9	0	5	7	0	3	31	7.8
21	LEACH, Abigail	2-0	42:13	21.1	6-11	.545	3-7	.429	0-0	.000	0	2	2	1.0	2	0	0	2	1	1	15	7.5
20	FRAAZA, Abi	4-0	82:17	20.6	10-25	.400	1-3	.333	7-10	.700	7	14	21	5.3	6	0	3	6	4	3	28	7.0
22	PAGE, Alex	4-0	78:05	19.5	7-15	.467	3-4	.750	2-5	.400	2	10	12	3.0	3	0	3	5	0	2	19	4.8
3	MERTENS, Jes	4-2	88:38	22.2	5-23	.217	1-8	.125	7-11	.636	3	12	15	3.8	6	0	6	6	0	4	18	4.5
4	CARPENTER, Emma	4-4	98:29	24.6	5-26	.192	3-10	.300	3-4	.750	3	8	11	2.8	8	0	9	4	0	0	16	4.0
11	PRASKA, Kylea	4-2	82:10	20.5	2-13	.154	2-7	.286	4-4	1.000	1	5	6	1.5	6	0	5	9	1	1	10	2.5
32	GOLLIHER, Eden	3-0	11:47	3.9	0-0	.000	0-0	.000	2-4	.500	0	1	1	0.3	1	0	0	2	0	0	2	0.7
24	ORAZEM, Lily	2-0	06:41	3.3	0-2	.000	0-0	.000	0-0	.000	0	1	1	0.5	2	0	0	0	0	0	0	0.0
25	SCHWARTZ, Veronica	2-0	06:28	3.2	0-0	.000	0-0	.000	0-0	.000	0	0	0	0.0	0	0	0	0	0	0	0	0.0
Team											5	1	6					3				
Total		4	799		73-216	.338	24-74	.324	41-62	.661	29	104	133	33.3	59	0	39	60	11	20	211	52.8
Opponents		4	800		91-230	.396	30-107	.280	30-44	.682	34	117	151	37.8	61	0	52	57	13	28	242	60.5

2021-2022 RESULTS

Date	Opponent	Score
11/12/2021	vs Neb.-Kearney	L 58-74
11/13/2021	at Northwest Mo. St.	L 48-53
11/18/2021	at Northern Mich.	L 48-50
11/19/2021	at Michigan Tech	L 57-65

OPPONENT BREAKDOWN

Hawai'i Pacific (2-1, 0-0)

Location: Honolulu, HI

Enrollment: 4,170

Head Coach: Reid Takatsuka

Assistant: McKenzie Mangino, Breanna

Mackenzie

ALL-TIME MEETINGS

Date	Winner	Score
11/29/13	LCU (A)	92-80

A - road team won
H - home team won

LCU SERIES HIGHS

Points:	92	at HPU 11/29/13	
Individual Points:	29	Nicole Hampton	11/29/13
Field Goal %:	.525	at HPU 11/29/13	
Indiv. FG made:	11	Nicole Hampton	11/29/13
Three-pointers:	9	at HPU 11/29/13	
Individual "3's":	3	Emily Pool	11/29/13
Rebounds:	45	at HPU 11/29/13	
Individual Reb:	9	Kaycie Boyles	11/29/13
Assists:	19	at HPU 11/29/13	
Individual Assists:	7	Nicole Hampton	11/29/13
Blocks:	2	at HPU 11/29/13	
Individual Blocks:	2	Kaycie Boyles	11/29/13

ROSTER

No.	Name	Cl.	Pos.	Ht.	Hometown / High School	Prior College
0	Adrienne Harnum	Fr.	Guard	5-7	Denver, Colo. / Columbine	
1	Abby Wrede	Fr.	Guard	5-8	Denver, Colo. / Cherry Creek	
2	Haley Masaki	So.	Guard	5-4	Honolulu, Hawai'i / Kamehameha-Kapalama	Northern Colo.
3	Amy Baum	Sr.	Guard	5-7	Melbourne, Australia / Rowville Secondary	
4	Makaela Zeldenryk	Fr.	Guard	5-9	Warragul, Australia / St. Paul's	
11	Allison Ross	Fr.	Guard	5-7	Boise, Idaho / Boise	
12	Kayli Klemp	Fr.	Guard	5-6	Murrieta, Calif. / Murrieta Mesa	
13	Kalina Obrey	So.	FW/G	5-10	Honolulu, Hawai'i / Kamehameha-Kapalama	San Jose St.
14	Jordyn Jensen	Fr.	FW/G	5-11	Truckee, Calif. / Bishop Manogue	
15	Maleah Turner	So.	Guard	5-6	Las Vegas, Nev. / Bishop Gorman	
21	Avery Cargill	Jr.	Guard	5-6	Santa Rosa, Calif. / Cardinal Newman	
23	Ella Berge	Jr.	Forward	5-11	Stockholm, Sweden / Solna Gymnasium	Hillsborough CC
24	Anau Tu'i'ivai	R-Fr.	Forward	6-1	Pukalani, Maui, Hawai'i / Seabury Hall	
25	Julia Razo	Gr.	FW/G	6-0	Woodland, Calif. / St. Francis	Dominican (Calif.)
30	Tavia Rowell	Jr.	Guard	5-10	Langley, B.C., Canada / Walnut Grove	Grand Canyon
32	Devvyn O'Brien	Fr.	Forward	6-2	Chandler, Ariz. / Basha	

TEAM STATISTICS

Game Records					Score by Periods						
Record	Overall	Home	Away	Neutral	Team	1st	2nd	3rd	4th	OT	TOT
ALL GAMES	2-1	0-0	1-1	1-0							
CONFERENCE	0-0	0-0	0-0	0-0	Hawaii Pacific	52	51	49	55	0	207
NON-CONFERENCE	2-1	0-0	1-1	1-0	Opponents	46	50	44	43	0	183

Team Box Score																								
No.	Player	Total					3-Point			F-Throw			Rebounds											
		GP-GS	MIN	AVG	FG-FGA	FTG-FTA	3FG-3FGA	3FG%	FT-FTA	FT%	OFF	DEF	TOT	AVG	PF	DQ	A	TO	BLK	STL	PTS	AVG		
30	ROWELL, Tavia	3-3	10:57	36.3	22-55	.400	7-22	.318	7-8	.875	1	20	21	7.0	11	0	3	2	2	5	58	19.3		
3	BAUM, Amy	3-3	10:25	35.8	18-35	.514	1-5	.200	7-16	.438	8	15	23	7.7	7	0	16	7	1	5	44	14.7		
21	CARGILL, Avery	3-3	11:26	37.1	10-30	.333	7-19	.368	4-4	1.000	2	10	12	4.0	4	0	4	1	0	2	31	10.3		
25	RAZO, Julia	3-3	9:38	31.2	8-33	.242	4-16	.250	10-10	1.000	4	11	15	5.0	6	0	2	4	0	3	30	10.0		
4	ZELDENRYK, Makaela	3-3	9:05	31.4	10-22	.455	5-11	.455	3-4	.750	2	6	8	2.7	13	1	4	6	0	3	28	9.3		
14	JENSEN, Jordyn	3-0	31:26	10.5	2-5	.400	0-1	.000	7-8	.875	5	4	9	3.0	8	0	1	1	0	1	11	3.7		
1	ROSS, Allison	3-0	38:54	13.0	1-7	.143	0-3	.000	3-4	.750	1	2	3	1.0	5	0	5	4	0	2	5	1.7		
32	O'BRIEN, Devyn	1-0	01:51	1.9	0-1	.000	0-0	.000	0-0	.000	0	0	0	0.0	2	0	0	0	0	0	0	0.0		
2	MASAKI, Haley	3-0	10:33	3.5	0-1	.000	0-0	.000	0-0	.000	0	0	0	0.0	5	0	1	0	0	0	0	0.0		
23	BERGE, Ella	1-0	01:43	1.7	0-0	.000	0-0	.000	0-0	.000	0	0	0	0.0	2	0	0	0	0	0	0	0.0		
Team											3	4	7				4							
Total		3	600		71-189	.376	24-77	.312	41-54	.759	26	72	98	32.7	63	6	136	29	3	21	207	69.0		
Opponents		3	600		65-168	.387	12-51	.235	41-62	.661	33	84	117	39.0	56	1	39	49	8	11	183	61.0		

2021-2022 RESULTS

Date	Opponent		Score
11/12/2021	vs Western Ore.	W	85-61
11/13/2021	at Saint Martin's	L	53-62
11/15/2021	at Seattle Pacific	W	69-60

SINGLE-SEASON RECORDS

Points Scored:

657	Beth Capps	1996-97
574	Beth Capps	1995-96
562	Kelsey Canavan	2011-12
560	Jordan Hampton	2006-07
543	Olivia Robertson	2018-19

Points Per Game Average:

22.7	Beth Capps	1996-97
20.0	Kechia Mason	1997-98
19.9	Burgundy Bass	1989-90
18.7	Nettie Gilbreath	1986-87

Field Goals Attempted:

516	Tonya Ivie	1981-82
492	Beth Capps	1995-96
435	Darla Lynch	1980-81
429	Kelsey Canavan	2011-12
425	Beth Capps	1996-97

Field Goals Made:

237	Beth Capps	1996-97
236	Kelsey Canavan	2011-12
217	Tonya Ivie	1981-82
210	Beth Capps	1995-96
202	Mamy N'Kolomoni	2000-01

Field Goal Percentage (Min. 300 Att.):

.580	Nicole Hampton	2015-16
.561	Roberta Ross	1986-87
.558	Beth Capps	1996-97
.556	Tess Bruffey	2015-16
.554	Carol Hise	1990-91

Assists:

221	Krista Lent	1990-91
211	Nicole Hampton	2015-16
197	Sierra Lovorn	2007-08
192	Nicole Hampton	2012-13
189	Krista Lent	1989-90

Three Pointers Attempted:

216	Kelsey Hoppel	2015-16
203	Angie Taylor	1997-98
188	Sierra Lovorn	2007-08
182	Ashton Duncan	2019-20
180	Lauren Abbott	2004-05

Three Pointers Made:

90	Kelsey Hoppel	2015-16
79	Ashton Duncan	2019-20
74	Kelsey Hoppel	2012-13
74	Jordan Hampton	2007-08
74	Angie Taylor	1997-98

Three Point Percentage (Min. 100 Att.):

.517	Allie Schulte	2018-19
.497	Jordan Hampton	2007-08
.469	Kelsey Hoppel	2013-14
.466	Jordan Hampton	2006-07
.463	Bailey Haist	2014-15

Steals:

115	Krista Lent	1990-91
107	Nicole Hampton	2015-16
105	Sherry Blackwell	1990-91
102	Tina Phillips	1991-92
99	Selestine Hurst	1996-97

Free Throws Attempted:

228	Mamy N'Kolomoni	2001-02
212	Beth Capps	1996-97
211	Carolyn Manning	2007-08
201	Emily Pool (Atkins)	2010-11
197	Emily Pool (Atkins)	2011-12

Free Throws Made:

177	Carolyn Manning	2007-08
166	Beth Capps	1996-97
157	Emily Pool (Atkins)	2011-12
156	Jordan Hampton	2006-07
153	Mamy N'Kolomoni	2001-02

Free Throw Percentage (Min. 50 Att.):

.938	Kelsey Hoppel	2013-14
.924	Nicole Hampton	2011-12
.922	Caitlyn Cunyus	2017-18
.921	Nicole Hampton	2012-13
.913	Brittany Roberts (Hampton)	2011-12

Blocked Shots:

129	Tess Bruffey	2017-18
113	Kellyn Schneider	2014-15
108	Tess Bruffey	2016-17
91	Kellyn Schneider	2015-16
86	Tess Bruffey	2014-15

Rebounds:

310	Nicole Hampton	2012-13
288	Kellyn Schneider	2014-15
282	Carolyn Manning	2007-08
281	Tess Bruffey	2017-18
278	Darla Lynch	1981-82

Rebounds Per Game:

10.5	Laura Geurin	1983-84
10.3	Kellyn Schneider	2014-15
10.1	Nettie Gilbreath	1986-87
9.9	Darla Lynch	1981-82
9.2	Mamy N'Kolomoni	2000-01

CAREER RECORDS

Points Scored:

1,796	Nicole Hampton	2011-16
1,773	Beth Capps	1995-97
1,767	Jordan Hampton	2005-09
1,728	Tess Bruffey	2014-18
1,725	Emily Pool (Atkins)	2010-14

Points Per Game Average:

17.1	Nettie Gilbreath	1985-87
16.1	Beth Capps	1993-97
15.8	Burgundy Bass	1987-90
15.4	Darla Lynch	1979-83

Field Goals Attempted:

1,387	Darla Lynch	1979-83
1,352	Tess Bruffey	2014-18
1,316	Beth Capps	1993-97
1,278	Mamy N'Kolomoni	1998-02
1,213	Emily Pool (Atkins)	2010-14

Field Goals Made:

640	Beth Capps	1993-97
631	Tess Bruffey	2014-18
628	Mamy N'Kolomoni	1998-02
590	Nicole Hampton	2011-16
588	Darla Lynch	1979-83

Field Goal Percentage (Min. 700 Att.):

.585	Haley Fowler	416-711
.547	Kelsey Canavan	416-760
.540	Nicole Hampton	590-1093
.511	Roberta Ross	362-709
.510	Maddi Chitsey	503-987

Assists:

659	Nicole Hampton	2011-16
633	Sierra Lovorn (Wilcox)	2005-09
439	Haley Burton	2010-15
397	Brittany Roberts (Hampton)	2008-12
363	Jessica Dahlstrom	1992-96

Three Pointers Attempted:

672	Sierra Lovorn (Wilcox)	2005-09
646	Kelsey Hoppel	2011-16
560	Jordan Hampton	2005-09
559	Haley Burton	2010-15
534	Angie Taylor	1996-00

Three Pointers Made:

272	Kelsey Hoppel	2011-16
248	Jordan Hampton	2005-09
234	Sierra Lovorn (Wilcox)	2005-09
205	Ashton Duncan	2017-->
204	Haley Burton	2010-15

Three Point Percentage (Min. 200 Att.):

.443	Jordan Hampton	192-407
.421	Kelsey Hoppel	272-646
.407	Brittany Roberts (Hampton)	154-378
.407	Bailey Haist	148-364
.391	Lindsay Reeves	83-212

Steals:

330	Nicole Hampton	2011-16
271	Sherry Brown	1979-83
243	Allie Schulte	2016-->
235	Sherry Blackwell	1988-91
226	Tabitha Qubty-Sellers	2000-04

Free Throws Attempted:

725	Emily Pool (Atkins)	2010-14
706	Mamy N'Kolomoni	1998-02
586	Beth Capps	1993-97
560	Nicole Hampton	2011-16
519	Jordan Hampton	2005-09

Free Throws Made:

565	Emily Pool (Atkins)	2010-14
510	Nicole Hampton	2011-16
459	Brittany Roberts (Hampton)	2008-12
456	Mamy N'Kolomoni	1998-02
449	Jordan Hampton	2005-09

Free Throw Percentage (Min. 100 Att.):

.911	Nicole Hampton	510-560
.874	Brittany Roberts (Hampton)	458-525
.873	Olivia Robertson	282-323
.865	Jordan Hampton	449-519
.848	Severyn Smith	224-264

Blocked Shots:

396	Tess Bruffey	2014-18
204	Kellyn Schneider	2014-16
174	Suzanne Copeland	1988-92
149	Maddi Chitsey	2016-20
122	Candace Clenney	2002-06

Rebounds:

1,053	Nicole Hampton	2011-16
911	Mamy N'Kolomoni	1998-02
845	Tess Bruffey	2014-18
838	Darla Lynch	1979-83
732	Carol Hise	1990-94

Rebounds Per Game:

9.39	Nettie Gilbreath	1985-87
8.38	Darla Lynch	1979-83
8.10	Nicole Hampton	2011-16
8.09	Kellyn Schneider	2014-16
7.92	Sharon Marion	1984-86

SINGLE GAME TEAM RECORDS

Points Scored:	
Lady Chaps:	125 vs Whittier College (12/28/94)
Opponents:	110 Panhandle State (2/11/93)
Individual:	38 Beth Capps (1/22/96)
Field Goals Made:	
Lady Chaps:	52 vs Whittier College (1/28/94)
Opponents:	44 Midwestern State (1/9/87)
Individual:	16 Nettie Gilbreath (1/10/87), Beth Capps (11/22/96 & 2/1/96)
Field Goals Attempted:	
Lady Chaps:	94 vs McMurry (2/26/82)
Opponents:	95 Bishop College (1/7/82)
Individual:	29 Beth Capps (2/1/96)
Field Goal Percentage:	
Lady Chaps:	.692 (36-52) vs Eastern New Mexico (11/29/14)
Opponents:	.714 Panhandle State (1/15/90)
Three Pointers Made:	
Lady Chaps:	18 vs Oklahoma Panhandle State (2/18/17)
Opponents:	16 Cameron (12/19/19)
Individual:	8 - Ashton Duncan (12/11/20) , Bailey Haist (1/2/17)
Three Pointers Attempted:	
Lady Chaps:	44 vs Oklahoma City (12/10/15)
Opponents:	41 Whittier College (12/28/94)
Individual:	19 Burgundy Bass (1/18/90)
Three Pointer Percentage:	
Lady Chaps:	.667 (12-18) vs Western New Mexico (11/17/17)
Opponents:	.700 (14-20) Southern Nazarene (1/31/08)
Free Throws Made:	
Lady Chaps:	40 vs Panhandle State (1/26/84)
Opponents:	38 St. Gregory's (2/2/02)
Individual:	15 Nicole Hampton (1/14/16)
Free Throws Attempted:	
Lady Chaps:	51 vs Panhandle State (2/11/93)
Opponents:	46 - 2 times
Individual:	17 Becky Hinojos (2/11/93), Mamy N'Kolomoni (3/1/02) and Nicole Hampton (1/14/16)
Free Throw Percentage:	
Lady Chaps:	1.000 (22-22) vs. Newman (2/15/18)
Opponents:	1.000 (21-21) St. Edward's (2/25/17)
Individual:	1.000 (14-14) Nicole Hampton (1/16/14)
Rebounds:	
Lady Chaps:	73 - 2 times (last: vs. Dallas Christian 12/31/09)
Opponents:	73 McMurry (1/23/82)
Individual:	20 Mamy N'Kolomoni (2/24/01)
Assists:	
Lady Chaps:	39 vs McMurry (1/17/89)
Opponents:	29 McMurry (1/11/88)
Individual:	13 Sierra Lovorn (2/10/07)
Steals:	
Lady Chaps:	38 vs McMurry (11/12/91)
Opponents:	27 St. Edwards (11/13/87)
Individual:	12 Tina Phillips (11/12/91)
Blocks:	
Lady Chaps:	17 vs. Okla. Panhandle St. (1/19/15) vs. Hardin-Simmons (2/19/91)
Individual:	10 Tess Bruffey - 3 times (12/13/14, 11/26/16, 2/9/17)
Turnovers:	
Lady Chaps:	40 vs. McMurry (2/23/80)
Opoonents:	41 Howard Payne (11/12/90)

RIP GRIFFIN CENTER RECORDS

Lady Chap Team Records

Points:	113 vs Northern New Mexico (11/7/09)
Field Goals:	49 vs Dallas Christian (11/4/08)
Field Goals Att.:	91 vs Huston-Tillotson (11/17/00)
Field Goal Pct.:	.692 vs Eastern New Mexico (36-52) (11/29/14)
3-Pointers:	18 vs Oklahoma Panhandle State (2/18/17)
3-Pointers Att.:	44 vs Oklahoma City (12/10/15)
3-Pointers Pct.:	.667 vs USAO (2/28/08) .667 vs Texas - Permian Basin (2/21/15) .667 vs. Western New Mexico (11/17/17)
Free Throws:	35 vs Rogers State (1/19/12)
Free Throw Att.:	44 vs Oklahoma Baptist (2/1/03)
Free Throw Pct.:	1.000 vs Newman (22-22) (2/15/18)
Rebounds:	62 vs Huston-Tillotson (11/17/00)
Assists:	34 vs Dallas Christian (11/4/08)
Blocked Shots:	14 vs Mid-America Christian (11/24/14)
Steals:	26 vs National Christian (12/8/01)

Lady Chap Individual Records

Points:	36 - Emily Pool (Atkins) vs Northern New Mexico College (11/5/10)
Field Goals:	13 - Mamy N'Kolomoni vs Huston-Tillotson (11/17/00)
Field Goals Att.:	22 - Cari Bigham vs UTPB
Field Goal Pct. (10 attempts):	.917 - Brittany Blackmon (11-12) vs Univ. of the Southwest (11/10/08)
3-Pointers:	8 - Ashton Duncan vs St. Mary's (12/11/20)
3-Pointers Att.:	12 - Lindsay Reeves vs Mesa State (11/21/03) 12 - Kelsey Hoppel vs. Angelo State (3/11/16) 12 - Claire Bruffey vs. Texas A&M Int'l (2/2/17) 12 - Ashton Duncan vs. St. Mary's (12/11/20)
3-Point Pct. (5 attempts):	1.000 - Kelsey Hoppel (5-5) vs. Okla. Christian (2/8/14) 1.000 - Bailey Haist (5-5) vs. St. Edward's (2/19/15)
Free Throws:	12 - 4 Times
Free Throws Att.:	17 - Mamy N'Kolomoni vs Southern Nazarene (3/1/02)
Free Throw Pct. (10 attempts):	1.00 - Tabitha Qubty-Sellers (10-10) vs Okla. Christian (1/18/01) 1.00 - Emily Pool (10-10) vs. Newman (11/23/13) 1.00 - Allie Schulte (10-10) vs. Daemen (11/20/21)
Rebounds:	20 - Mamy N'Kolomoni vs St. Gregory's (2/24/01)
Assists:	13 - Sierra Lovorn vs Oklahoma Baptist (2/10/07)
Blocked Shots:	10 - Tess Bruffey vs. St. Mary's (2/9/17)

RADIO / TV HEADSHOT ROSTER



1 - ASHTYN DUNCAN
Sr. | 5-9 | G
Lubbock, Texas



1 - ASHTYN DUNCAN
Gr. | 5-9 | G
Lubbock, Texas



2 - MACI MADDOX
So. | 5-7
Lubbock, Texas



3 - AUDREY ROBERTSON
So. | 5-8 | G
Kerrville, Texas



4 - RACHEL HAASE
Fr. | 5-8 | G
Amarillo, Texas



5 - LAYNEE BURR
Sr. | 5-9 | G
Stratford, Texas



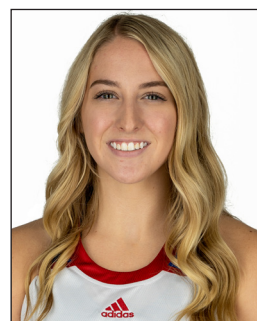
12 - SAVANNAH SUMRALL
Jr. | 5-9 | G
Wellington, Texas



14 - CHANNING CUNYUS
Sr. | 5-9 | G
Canyon, Texas



15 - SHAYLEE STOVALL
So. | 5-6 | G
Idalou, Texas



20 - CARLI BOSTWICK
Fr. | 5-9 | FW/G
Lubbock, Texas



21 - ALLIE SCHULTE
Gr. | 5-10 | G
Nazareth, Texas



22 - JULIANA ROBERTSON
Gr. | 5-10 | FW
Kerrville, Texas



23 - BRYLEE WINFREY
Jr. | 5-9 | G
Canyon, Texas



30 - AUDREY SPURGIN
Fr. | 6-1 | P
Fredericksburg, Texas



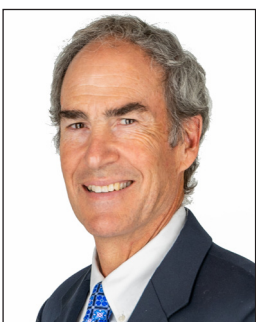
32 - WHITNEY COX
Jr. | 6-1 | FW
Flower Mound, Texas



40 - REESE SCHUMANN
Fr. | 6-2 | P
Houston, Texas



STEVE GOMEZ
Head Coach
19th Season



VIC SELF
Assistant Coach
10th Season



KAYCIE WILSON
Assistant Coach
7th Season



JULIO PACHECO
Volunteer Assistant Coach
2nd Season



SERENITY SEILER
Associate Athletic Trainer
4th Season